

**REFERENCE PLAN OF STATUTORY RIGHT OF WAY
WITHIN LOT 1, DL 2003, CARIBOO DISTRICT,
PLAN 8579, EXCEPT PLAN 22760.**

PLAN EPP31290

PURSUANT TO SECTION 113 OF THE LAND TITLE ACT.

BCGS 93G.087

THIS PLAN LIES WITHIN INTEGRATED SURVEY AREA
No. 39, PRINCE GEORGE, NAD83 (CSRS) 4.0.0.BC.1

THE INTENDED PLOT SIZE OF THIS PLAN IS 560mm IN WIDTH BY
432mm IN HEIGHT (C SIZE) WHEN PLOTTED AT A SCALE OF 1:500

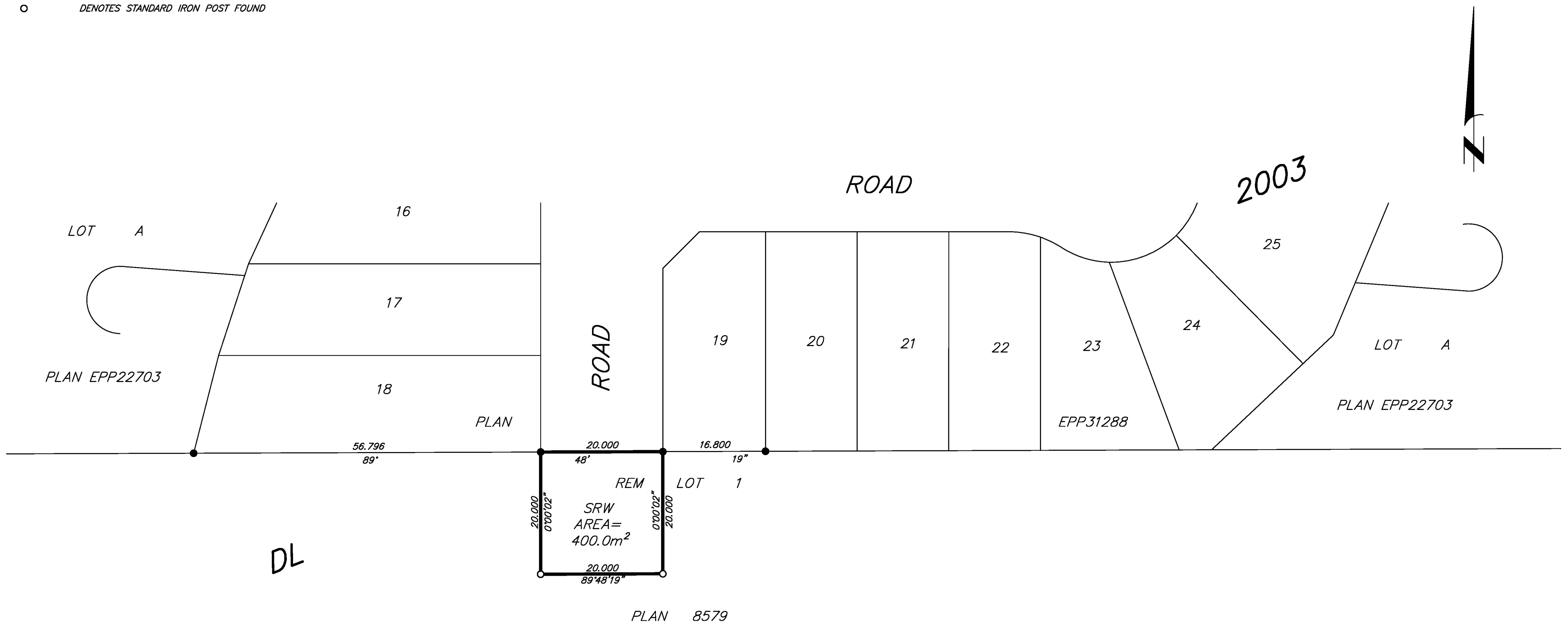


ALL DISTANCES ARE HORIZONTAL GROUND-LEVEL AND ARE SHOWN
IN METRES AND DECIMALS THEREOF, UNLESS OTHERWISE INDICATED.

LEGEND


GRID BEARINGS ARE DERIVED FROM PREVIOUSLY
INTEGRATED PLAN EPP31288.

- DENOTES STANDARD IRON POST FOUND
- DENOTES STANDARD IRON POST FOUND



THE FIELD SURVEY REPRESENTED BY THIS PLAN
WAS COMPLETED ON THE 1st DAY OF APRIL, 2014.
DALE KEOWN, BCLS 468

THIS PLAN LIES WITHIN THE REGIONAL DISTRICT OF FRASER – FORT GEORGE.

 McElhanney McElhanney Associates Land Surveying Ltd. Prince George, B.C. E-mail: pgmals@mcelhanney.com Ph: (250) 561-2229 Fax: (250) 563-1941	
DL- 2003	File No. - 6007-SRW2
CPG File: SD100376	