

REFERENCE PLAN OF STATUTORY RIGHT OF WAY WITHIN LOTS 8 AND 9, DISTRICT LOT 2003, CARIBOO DISTRICT, PLAN EPP31288.

PLAN EPP31289

PURSUANT TO SECTION 113 OF THE LAND TITLE ACT.

BCGS 93G.087

THIS PLAN LIES WITHIN INTEGRATED SURVEY AREA
No. 39, PRINCE GEORGE, NAD83 (CSRS) 4.0.0.BC.1

THE INTENDED PLOT SIZE OF THIS PLAN IS 560mm IN WIDTH BY
432mm IN HEIGHT (C SIZE) WHEN PLOTTED AT A SCALE OF 1:500



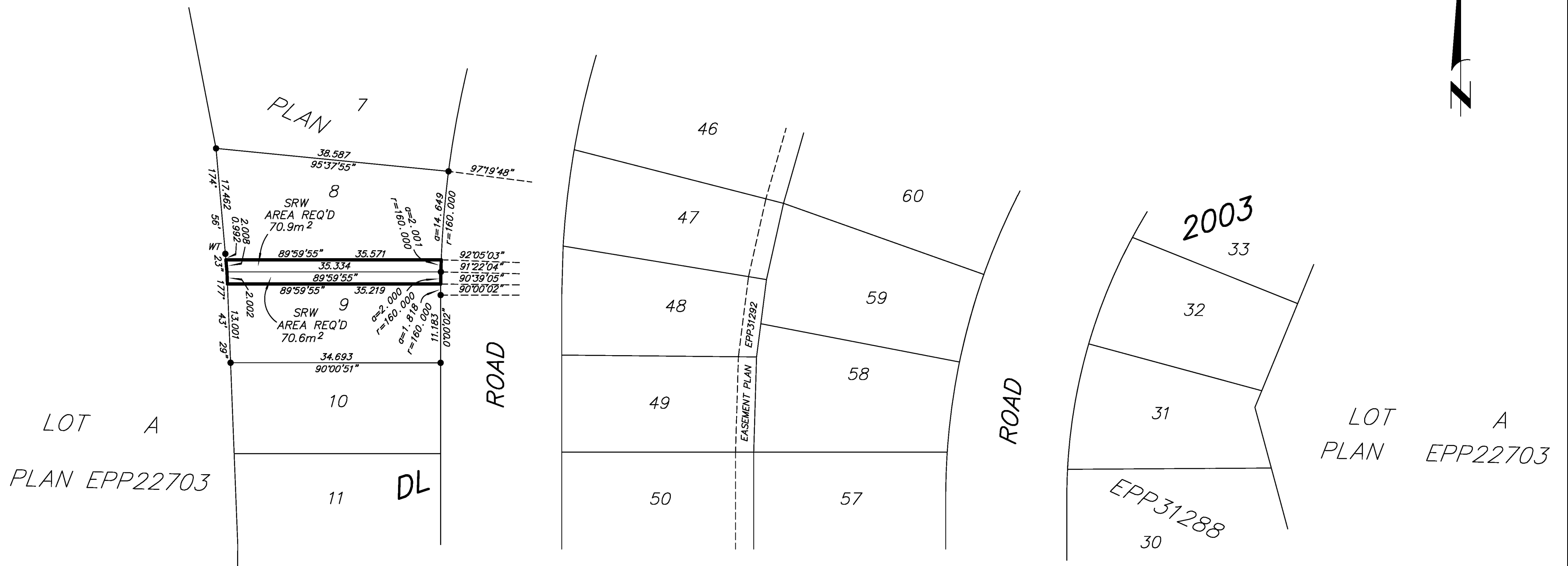
ALL DISTANCES ARE HORIZONTAL GROUND-LEVEL AND ARE SHOWN
IN METRES AND DECIMALS THEREOF, UNLESS OTHERWISE INDICATED.

LEGEND

GRID BEARINGS ARE DERIVED FROM PREVIOUSLY
INTEGRATED PLAN EPP31288.

- DENOTES STANDARD IRON POST FOUND

NOTE: THIS PLAN SHOWS ONE OR MORE WITNESS POSTS
WHICH ARE NOT SET ON THE TRUE CORNER(S).



| BOOK OF REFERENCE | |
|----------------------|--------------------|
| DESCRIPTION | AREA |
| LOT 8, PLAN EPP31288 | 70.9m ² |
| LOT 9, PLAN EPP31288 | 70.6m ² |

THE FIELD SURVEY REPRESENTED BY THIS PLAN
WAS COMPLETED ON THE 1st DAY OF APRIL, 2014.
DALE KEOWN, BCLS 468

THIS PLAN LIES WITHIN THE REGIONAL DISTRICT OF FRASER – FORT GEORGE.

McElhanney
McElhanney Associates
Land Surveying Ltd.
Prince George, B.C.

E-mail: pgmals@mcelhanney.com
Ph: (250) 561-2229 Fax: (250) 563-1941

DL- 2003 File No. - 6007-SRW
CPG File: SD100376