

**SUBDIVISION PLAN OF LOT 1, DISTRICT LOT 2003, CARIBOO DISTRICT, PLAN 9797, EXCEPT: PLANS PGP39628, PGP40175, BCP42930, AND EPP22703.**

**PLAN EPP31288**

BCGS 93G.087

THIS PLAN LIES WITHIN INTEGRATED SURVEY AREA No. 39, PRINCE GEORGE, NAD83 (CSRS) 4.0.0.BC.1

THE INTENDED PLOT SIZE OF THIS PLAN IS 864mm IN WIDTH BY 560mm IN HEIGHT (D SIZE) WHEN PLOTTED AT A SCALE OF 1:750

10m 0 10 20 30 50m

ALL DISTANCES ARE SHOWN IN METRES AND DECIMALS THEREOF, UNLESS OTHERWISE INDICATED.

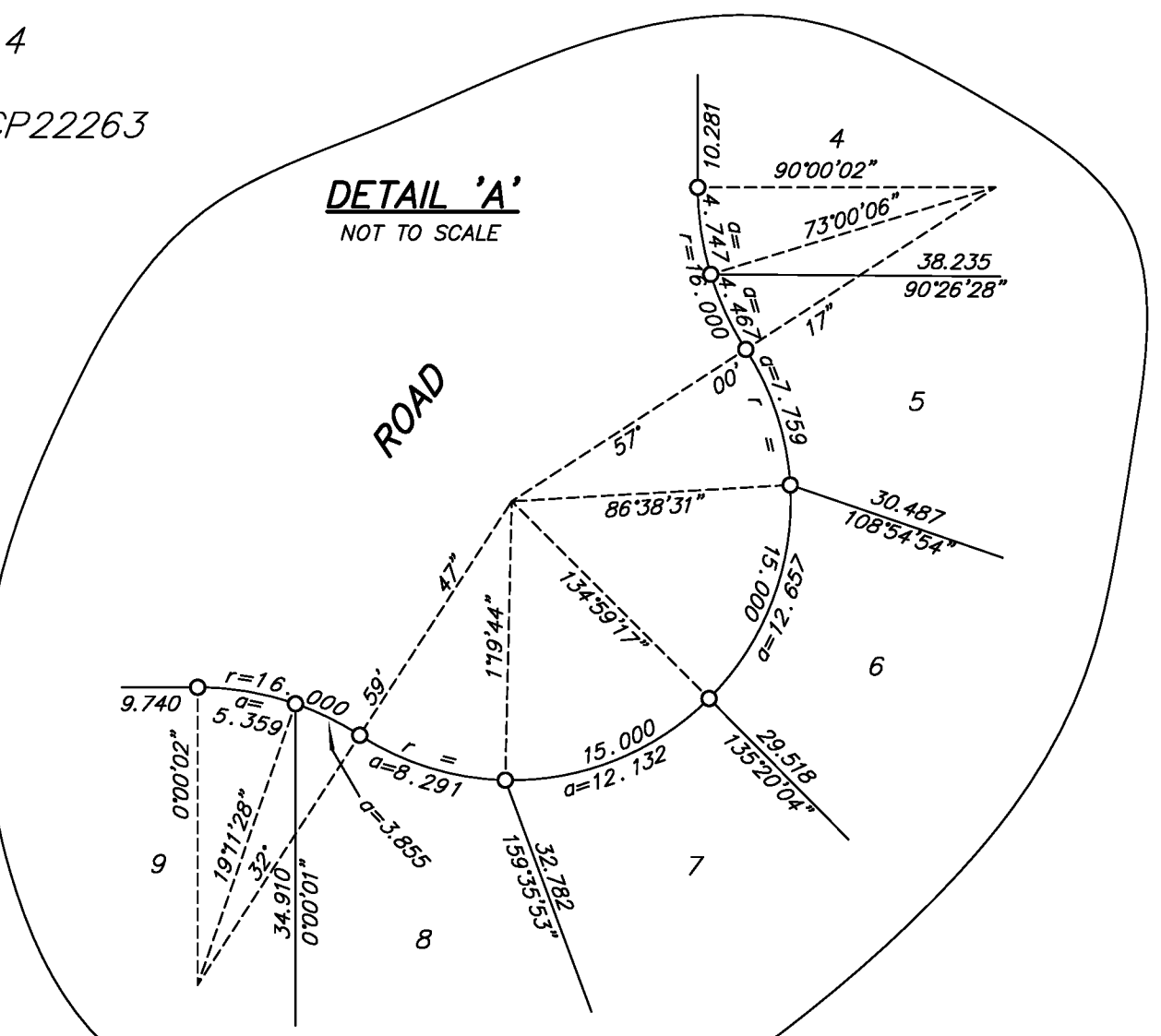
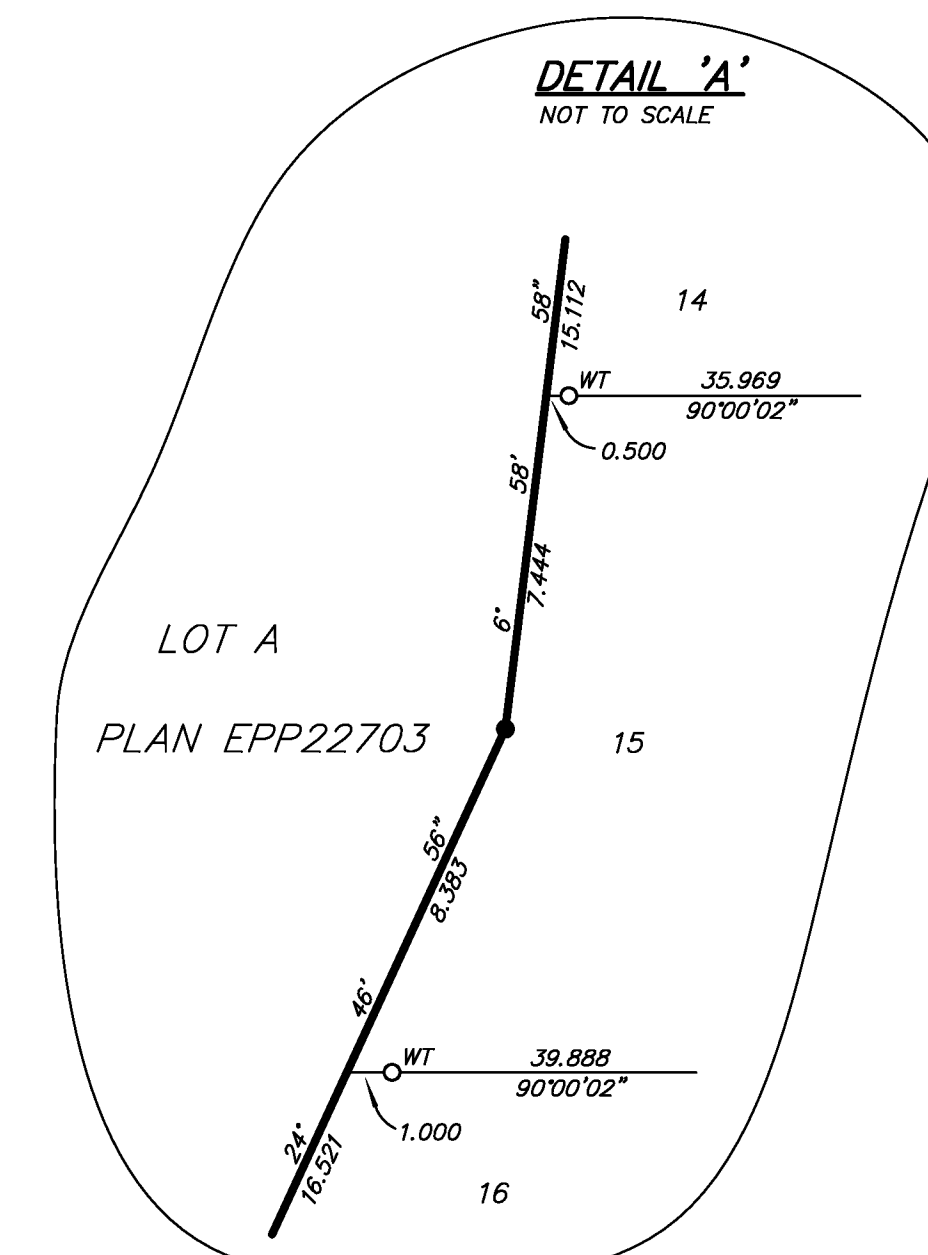
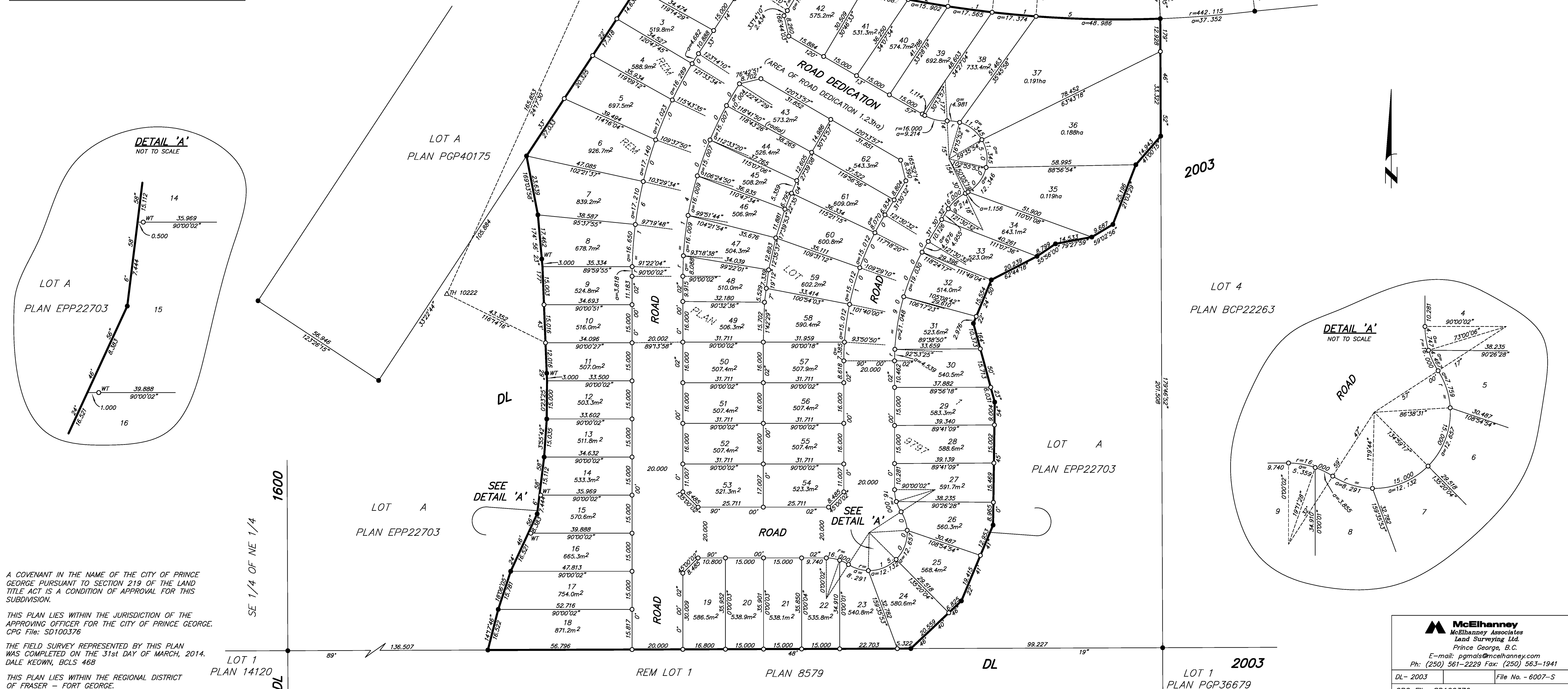
**LEGEND**

GRID BEARINGS ARE DERIVED FROM OBSERVATIONS BETWEEN CONTROL MONUMENTS 86H1673 AND 86H1829

- DENOTES CONTROL MONUMENT FOUND
- DENOTES STANDARD IRON POST FOUND
- DENOTES STANDARD IRON POST PLACED
- △ DENOTES TRAVERSE HUB

THIS PLAN SHOWS HORIZONTAL GROUND-LEVEL DISTANCES UNLESS OTHERWISE SPECIFIED. TO COMPUTE GRID DISTANCES, MULTIPLY GROUND-LEVEL DISTANCES BY THE AVERAGE COMBINED FACTOR OF 0.999489 WHICH HAS BEEN DERIVED FROM GNSS STATIC BASE AT TH 10222.

NOTE: THIS PLAN SHOWS ONE OR MORE WITNESS POSTS WHICH ARE NOT SET ON THE TRUE CORNER(S).



A COVENANT IN THE NAME OF THE CITY OF PRINCE GEORGE PURSUANT TO SECTION 219 OF THE LAND TITLE ACT IS A CONDITION OF APPROVAL FOR THIS SUBDIVISION.

THIS PLAN LIES WITHIN THE JURISDICTION OF THE APPROVING OFFICER FOR THE CITY OF PRINCE GEORGE. CPG File: SD100376

THE FIELD SURVEY REPRESENTED BY THIS PLAN WAS COMPLETED ON THE 31st DAY OF MARCH, 2014. DALE KEOWN, BCLS 468

THIS PLAN LIES WITHIN THE REGIONAL DISTRICT OF FRASER - FORT GEORGE.

**McElhanney**  
 McElhanney Associates  
 Lead Surveying Ltd.  
 Prince George, B.C.  
 E-mail: pgmats@mcnelhanney.com  
 Ph: (250) 561-2229 Fax: (250) 563-1941

DL-2003 File No. - 6007-S  
 CPG File: SD100376