

**PLAN OF SUBDIVISION OF PART OF LOT 1, DL 905,  
 CARIBOO DISTRICT, PLAN BCP22408, EXCEPT PLANS BCP46243 AND EPP17616  
 AND PART OF THE NORTH WEST 1/4 OF THE NORTH WEST 1/4 OF DL 2003,  
 CARIBOO DISTRICT, EXCEPT PLANS PGP39628, BCP42930, BCP46243,  
 EPP17616, EPP26188 AND EPP26189.**

**PLAN EPP30392**

BCGS 93G.087

PURSUANT TO SECTION 67 OF THE LAND TITLE ACT.

INTEGRATED SURVEY AREA No. 39, PRINCE GEORGE, NAD83 (CSRS)

THE INTENDED PLOT SIZE OF THIS PLAN IS 560mm IN WIDTH BY 432mm IN HEIGHT (C SIZE) WHEN PLOTTED AT A SCALE OF 1:1000

20m 0 20 40 60 80m

ALL DISTANCES ARE SHOWN IN METRES AND DECIMALS THEREOF, UNLESS OTHERWISE INDICATED.

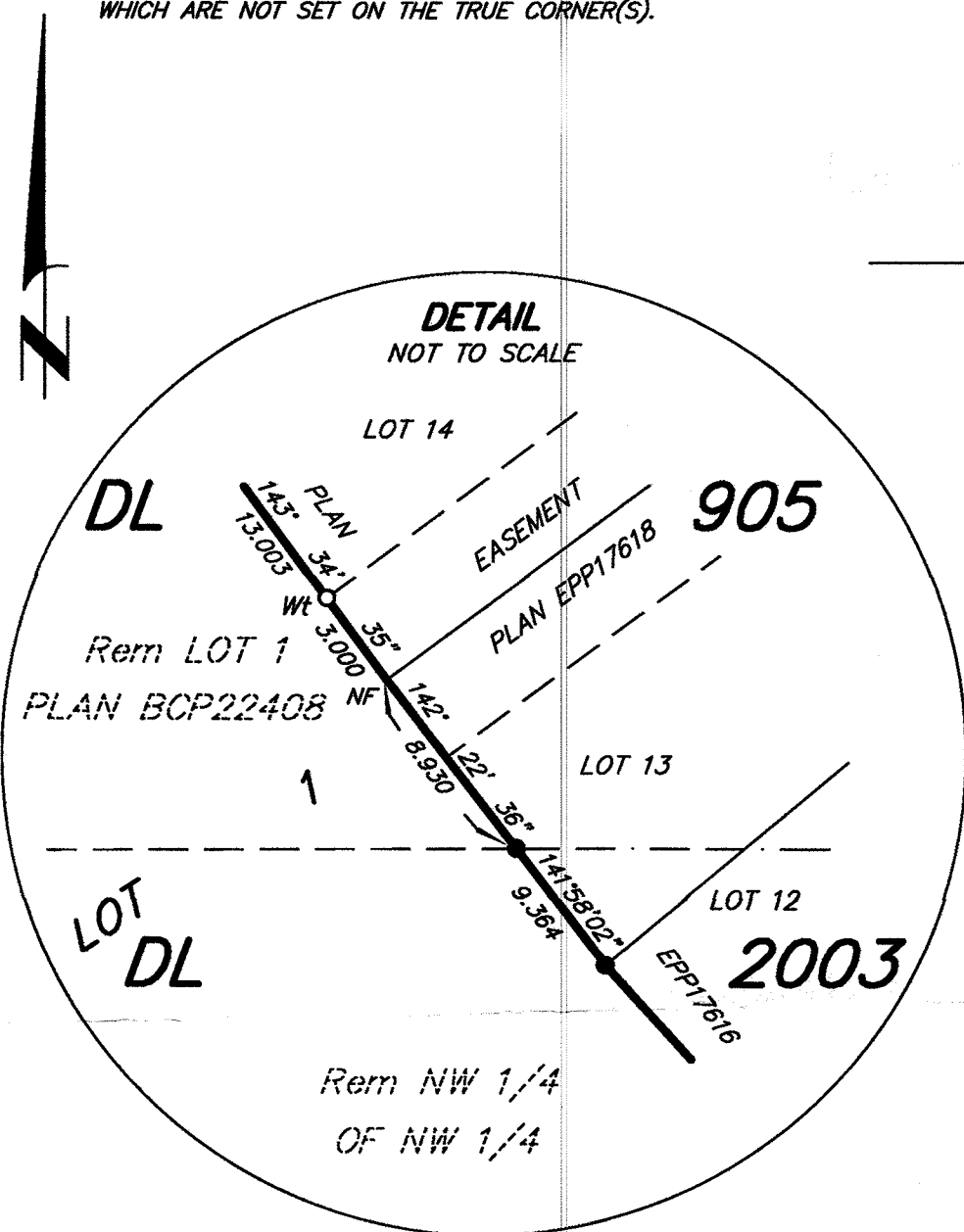
**LEGEND**

GRID BEARINGS ARE DERIVED FROM OBSERVATIONS BETWEEN GEODETIC CONTROL MONUMENTS 86H1817 AND 86H1541.

- DENOTES CONTROL MONUMENT FOUND
- DENOTES STANDARD IRON POST FOUND
- DENOTES STANDARD IRON POST PLACED
- △ DENOTES TRAVERSE HUB PLACED

THIS PLAN SHOWS HORIZONTAL GROUND-LEVEL DISTANCES UNLESS OTHERWISE SPECIFIED. TO COMPUTE GRID DISTANCES, MULTIPLY GROUND-LEVEL DISTANCES BY THE AVERAGE COMBINED FACTOR OF 0.9995022 WHICH HAS BEEN DERIVED FROM 86H1817.

NOTE: THIS PLAN SHOWS ONE OR MORE WITNESS POSTS WHICH ARE NOT SET ON THE TRUE CORNER(S).



THIS PLAN LIES WITHIN THE JURISDICTION OF THE APPROVING OFFICER FOR THE CITY OF PRINCE GEORGE. CPG File: SD100437

THE FIELD SURVEY REPRESENTED BY THIS PLAN WAS COMPLETED ON THE 15th DAY OF APRIL, 2013. DARREN KENT, BCLS

THIS PLAN LIES WITHIN THE REGIONAL DISTRICT OF FRASER - FORT GEORGE.

**McElhanney**  
 McElhanney Associates  
 Land Surveying Ltd.  
 Prince George, B.C.  
 E-mail: pgm@mcElhanney.com  
 Ph: (250) 561-2229 Fax: (250) 563-1941

DL- 905 & 2003 File No. - 6097-S

CPG File: SD100437