

# EXPLANATORY PLAN OF EASEMENT OVER PART OF LOT 1, DISTRICT LOT 1433, CARIBOO DISTRICT, PLAN EPP23883.

PLAN EPP30390

BCGS 93G.087  
PURSUANT TO SECTION 99(1)(e) OF THE LAND TITLE ACT.

THIS PLAN LIES WITHIN INTEGRATED SURVEY  
AREA No. 39, PRINCE GEORGE, NAD83 (CSRS).

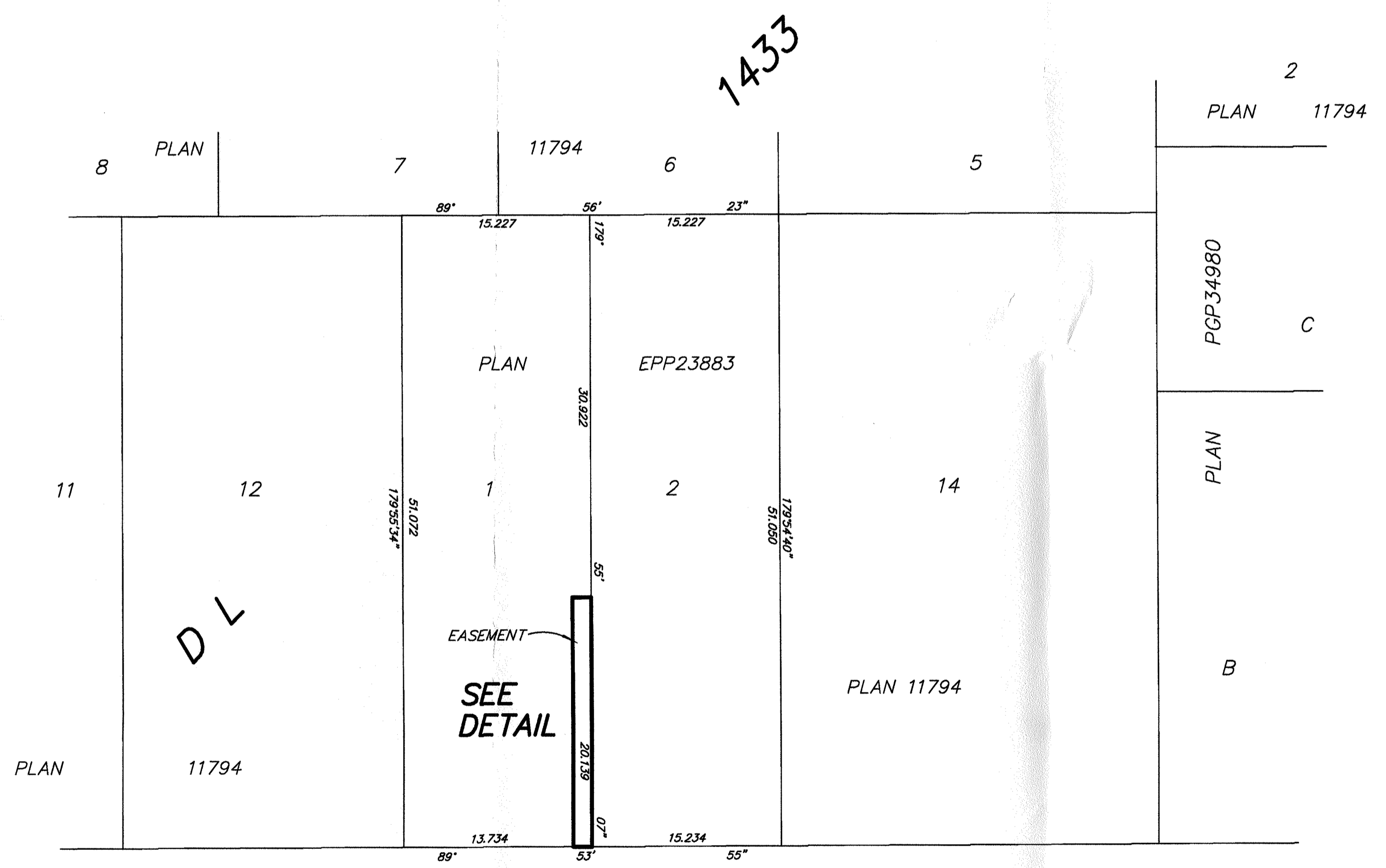
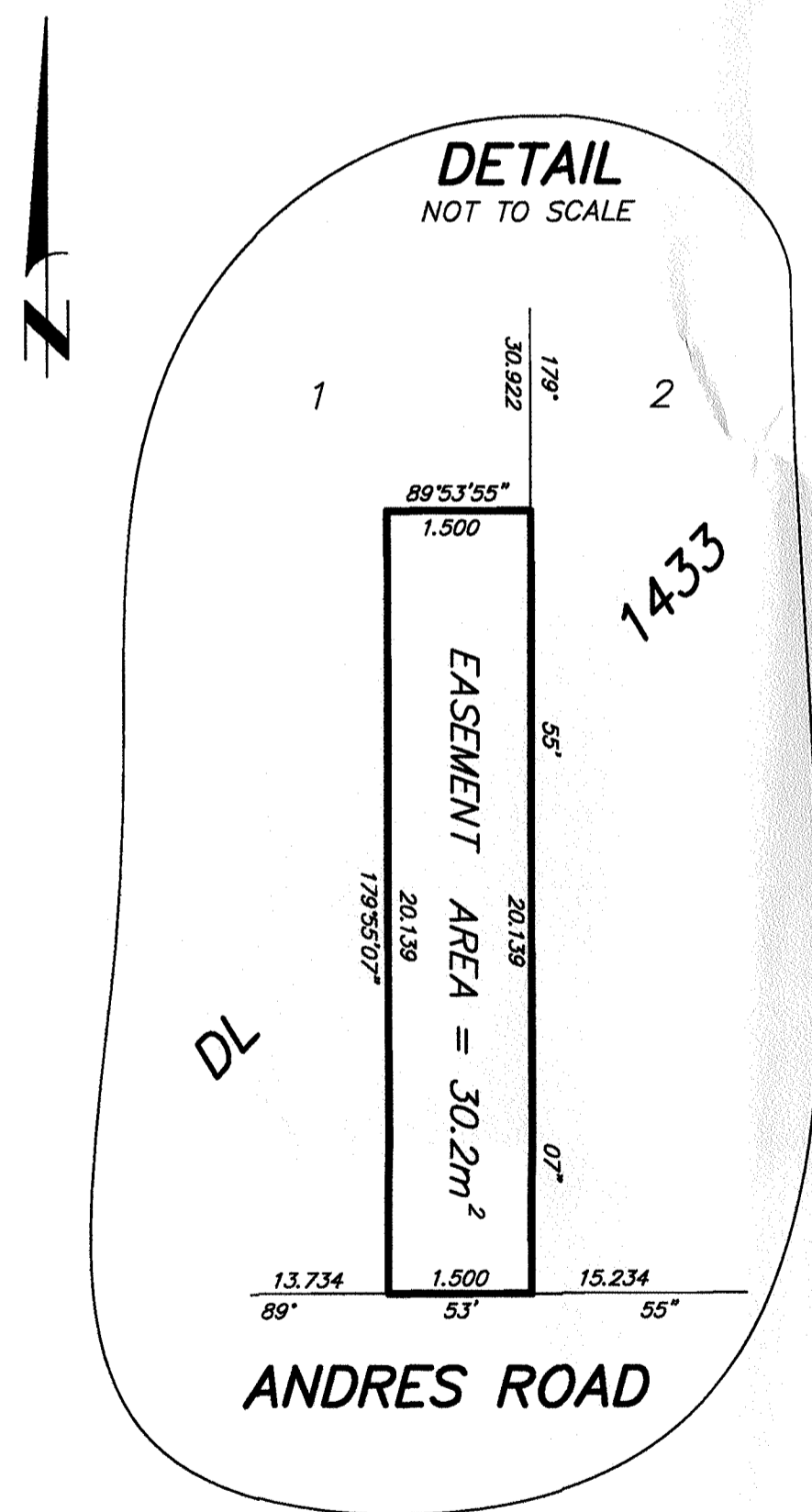
THE INTENDED PLOT SIZE OF THIS PLAN IS 560mm IN WIDTH BY  
432mm IN HEIGHT (C SIZE) WHEN PLOTTED AT A SCALE OF 1:300



ALL DISTANCES ARE HORIZONTAL GROUND-LEVEL AND ARE SHOWN  
IN METRES AND DECIMALS THEREOF, UNLESS OTHERWISE INDICATED.

## LEGEND

GRID BEARINGS ARE DERIVED FROM PREVIOUSLY  
INTEGRATED PLAN EPP23883.



# ANDRES ROAD

THIS PLAN IS BASED ON THE FOLLOWING LAND TITLE  
AND SURVEY AUTHORITY OF BC RECORDS: PLAN EPP23883  
DARREN KENT, BCLS  
10th DAY OF MAY, 2013

THIS PLAN LIES WITHIN THE REGIONAL DISTRICT OF FRASER - FORT GEORGE

**McElhanney**  
McElhanney Associates  
Land Surveying Ltd.  
Prince George, B.C.  
E-mail: pgmals@mcelhanney.com  
Ph: (250) 561-2229 Fax: (250) 563-1941

DL-1433 File No. - 6036-E