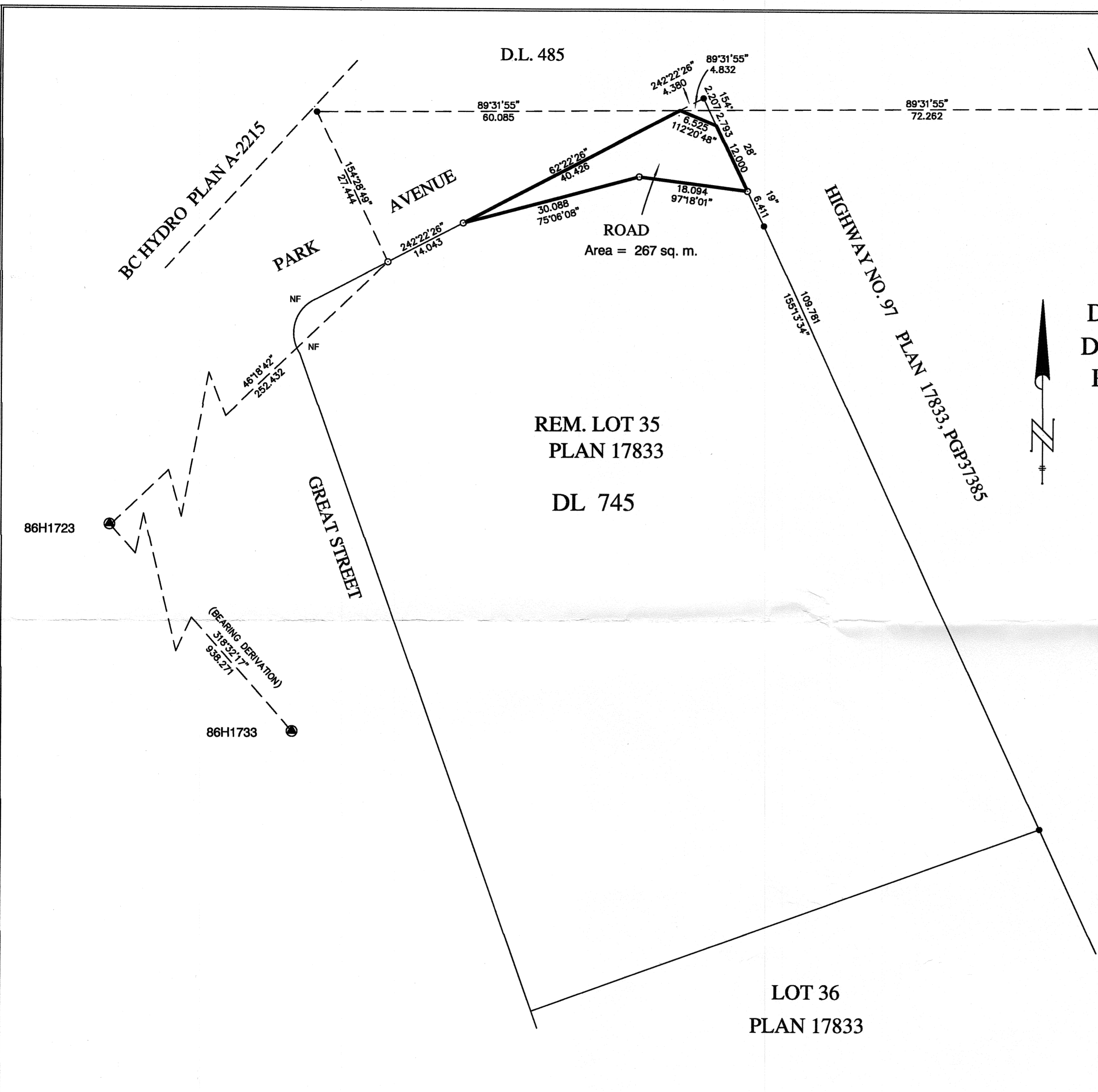


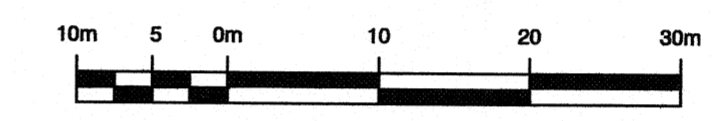
PLAN EPP2966



**REFERENCE PLAN OF ROAD
DEDICATION OVER PART OF LOT 35,
DLs 485 AND 745, CARIBOO DISTRICT,
PLAN 17833 EXCEPT PLAN PGP37385**

BCGS 93G.087

Pursuant to Section 107 of the Land Title Act



All distances are in metres
The intended plot size of this plan is 559 mm in width
by 432 mm in height when plotted at scale 1:500
(use C size sheet)

- LEGEND**
- Denotes Standard Iron Post Placed
 - Denotes Standard Iron Post Found
 - ⊙ Integrated Survey Area Control Monument

Grid bearings are derived from observations between control monuments 85H1723 and 85H1733 Integrated Survey Area Number 39, City of Prince George.

This plan shows ground level measured distances.
Prior to computation of U.T. M. coordinates
multiply by combined factor of 0.9995132

This plan lies within the Regional District of Fraser - Fort George

The field survey represented by this plan
was completed by Richard E. Gook, B.C.L.S.
on the 25th day of May, 2009

R.E. GOOK & ASSOCIATES
B.C. & CANADA LAND SURVEYORS
886 VANCOUVER STREET
PRINCE GEORGE, B.C. V2K 2P9
PHONE: 250-992-2424
FAX: 250-992-3434
FILE: 09-0546PG
regook@northernsurvey.com

This plan lies within the jurisdiction of the Approving Officer for the City of Prince George

This plan lies within the jurisdiction of the Approving Officer for the Ministry of Transportation and Infrastructure
File 36396-0001