

REFERENCE PLAN OF ROAD DEDICATION OVER PART OF LOT A, DISTRICT LOT 8180, CARIBOO DISTRICT, PLAN EPP18684.

PLAN EPP28638

PURSUANT TO SECTION 107 OF THE LAND TITLE ACT
BCGS 93G.087

THIS PLAN LIES WITHIN INTEGRATED SURVEY
AREA No. 39, PRINCE GEORGE, NAD83 (CSRS)

THE INTENDED PLOT SIZE OF THIS PLAN IS 432mm IN WIDTH BY
560mm IN HEIGHT (C SIZE) WHEN PLOTTED AT A SCALE OF 1:1000



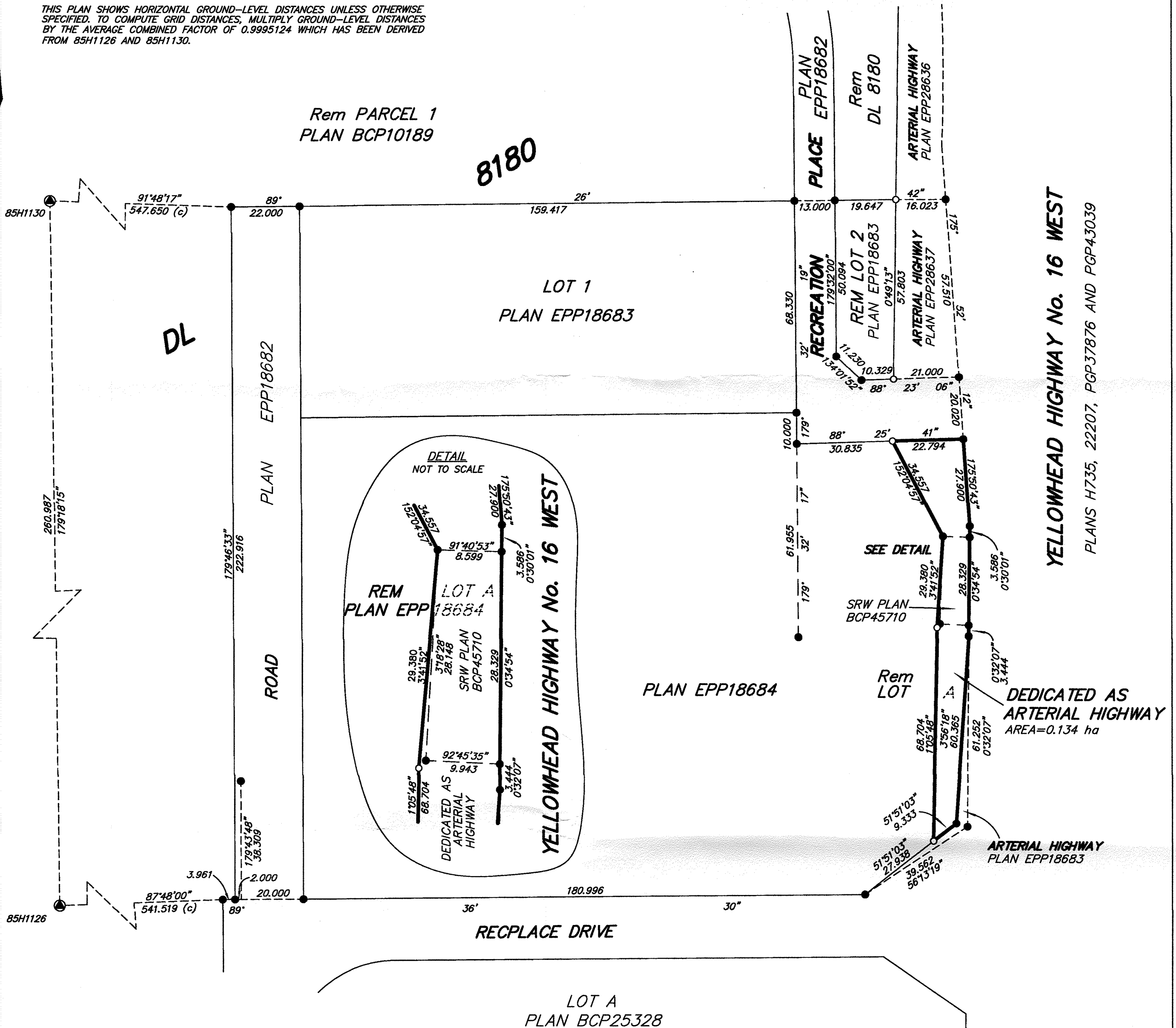
ALL DISTANCES ARE SHOWN IN METRES AND DECIMALS
THEREOF, UNLESS OTHERWISE INDICATED.

LEGEND

GRID BEARINGS ARE DERIVED FROM OBSERVATIONS BETWEEN
GEODETIC CONTROL MONUMENTS 85H1126 AND 85H1130.

- DENOTES CONTROL MONUMENT
- DENOTES STANDARD IRON POST FOUND
- DENOTES STANDARD IRON POST PLACED

THIS PLAN SHOWS HORIZONTAL GROUND-LEVEL DISTANCES UNLESS OTHERWISE
SPECIFIED. TO COMPUTE GRID DISTANCES, MULTIPLY GROUND-LEVEL DISTANCES
BY THE AVERAGE COMBINED FACTOR OF 0.9995124 WHICH HAS BEEN DERIVED
FROM 85H1126 AND 85H1130.



YELLOWHEAD HIGHWAY No. 16 WEST
PLANS H735, 22207, PGP37876 AND PGP43039

THIS PLAN DEDICATES ARTERIAL HIGHWAY AS AUTHORIZED
BY THE MINISTER OF TRANSPORTATION AND INFRASTRUCTURE.

THIS PLAN LIES WITHIN THE JURISDICTION OF THE
APPROVING OFFICER FOR THE CITY OF PRINCE GEORGE.

THE FIELD SURVEY REPRESENTED BY THIS PLAN
WAS COMPLETED ON THE 17th DAY OF JANUARY, 2013.
DALE KEOWN, BCLS

THIS PLAN LIES WITHIN THE REGIONAL DISTRICT OF FRASER - FORT GEORGE.

McElhanney
McElhanney Associates
Land Surveying Ltd.
Prince George, B.C.
E-mail: pgmals@mcElhanney.com
Ph: (250) 561-2229 Fax: (250) 563-1941

DL- 8180	File No. - 6081-R-3
Ref 2341-01764-0	MoTI FILE: PS725694

RECEIVED
City of Prince George

JUL 19 2013
Planning and
Development