

# REFERENCE PLAN OF ROAD DEDICATION OVER PART OF DISTRICT LOT 8180, CARIBOO DISTRICT, EXCEPT PLANS B3608, 6932, 7274, 22207, H735, H700, PGP43039, PART ON PLANS BCP10188 BCP28701, EPP18682, EPP18683 AND EPP18684.

## PLAN EPP28636

PURSUANT TO SECTION 107 OF THE LAND TITLE ACT

BCGS 93G.087

THIS PLAN LIES WITHIN INTEGRATED SURVEY  
AREA No. 39, PRINCE GEORGE, NAD83 (CSRS)

THE INTENDED PLOT SIZE OF THIS PLAN IS 432mm IN WIDTH BY  
560mm IN HEIGHT (C SIZE) WHEN PLOTTED AT A SCALE OF 1:1250

20m 0 20 40 60 80m

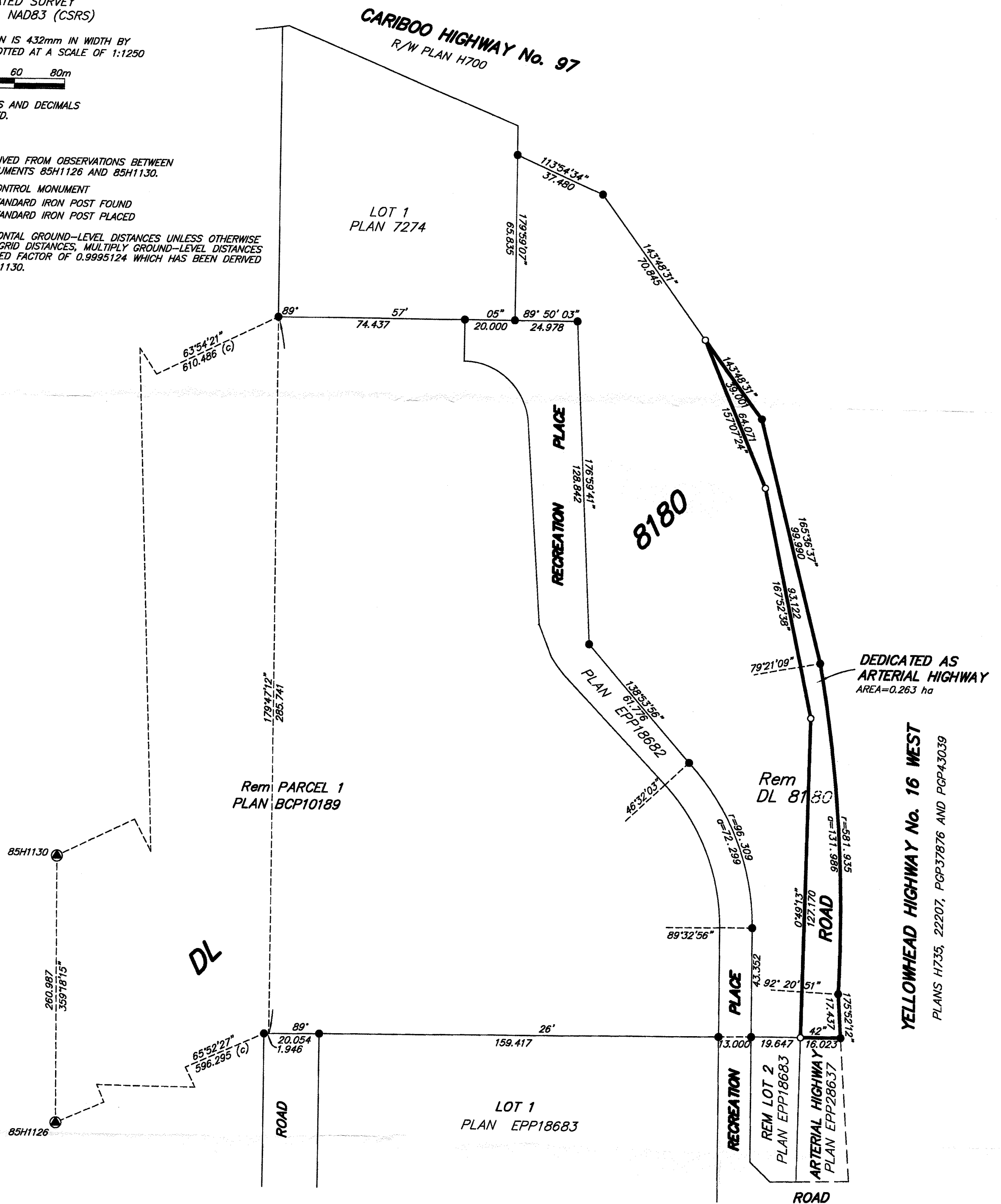
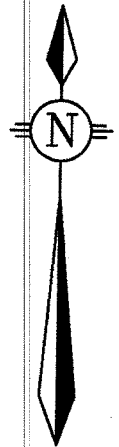
ALL DISTANCES ARE SHOWN IN METRES AND DECIMALS  
THEREOF, UNLESS OTHERWISE INDICATED.

### LEGEND

GRID BEARINGS ARE DERIVED FROM OBSERVATIONS BETWEEN  
GEODETIC CONTROL MONUMENTS 85H1126 AND 85H1130.

- DENOTES CONTROL MONUMENT
- DENOTES STANDARD IRON POST FOUND
- DENOTES STANDARD IRON POST PLACED

THIS PLAN SHOWS HORIZONTAL GROUND-LEVEL DISTANCES UNLESS OTHERWISE  
SPECIFIED. TO COMPUTE GRID DISTANCES, MULTIPLY GROUND-LEVEL DISTANCES  
BY THE AVERAGE COMBINED FACTOR OF 0.9995124 WHICH HAS BEEN DERIVED  
FROM 85H1126 AND 85H1130.



THIS PLAN DEDICATES ARTERIAL HIGHWAY AS AUTHORIZED  
BY THE MINISTER OF TRANSPORTATION AND INFRASTRUCTURE.

THIS PLAN LIES WITHIN THE JURISDICTION OF THE  
APPROVING OFFICER FOR THE CITY OF PRINCE GEORGE.

THE FIELD SURVEY REPRESENTED BY THIS PLAN  
WAS COMPLETED ON THE 17th DAY OF JANUARY, 2013.  
DALE KEOWN, BCLS

THIS PLAN LIES WITHIN THE REGIONAL DISTRICT OF FRASER - FORT GEORGE.



**McElhanney**  
McElhanney Associates  
Land Surveying Ltd.  
Prince George, B.C.

E-mail: pgm@mcclhanney.com  
Ph: (250) 561-2229 Fax: (250) 563-1941

DL- 8180	Rev 1	File No. - 6081-R-1
Ref 2341-01764-0	MoTI FILE: PS725694	