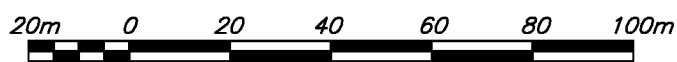


**REFERENCE PLAN OF CONSOLIDATION OF PARCEL 1,
DISTRICT LOTS 1574 AND 3050, PLAN PGP35585
EXCEPT PLAN PGP44869 AND DISTRICT LOT 1574
EXCEPT PLANS 5659, 6123, 8540, 12288, 27425 AND
PGP44719, BOTH OF CARIBOO DISTRICT.**

PLAN EPP28438

PURSUANT TO SECTION 100(1)(b) OF THE LAND TITLE ACT

BCGS 93G.097



THE INTENDED PLOT SIZE OF THIS PLAN IS 432mm IN WIDTH BY 560mm IN HEIGHT (C SIZE) WHEN PLOTTED AT A SCALE OF 1:1500

INTEGRATED SURVEY AREA No. 39, PRINCE GEORGE, NAD83 (CSRS)

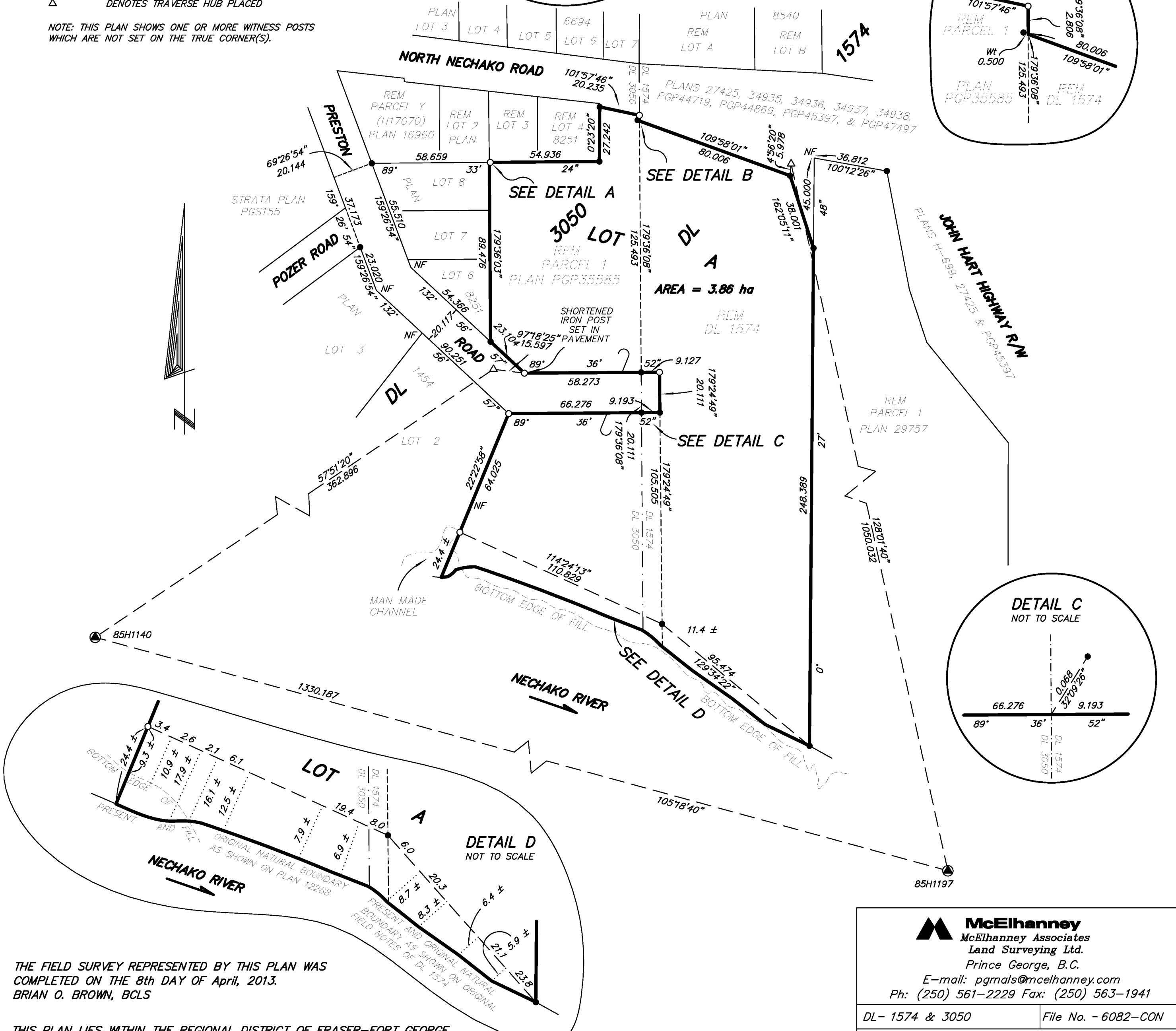
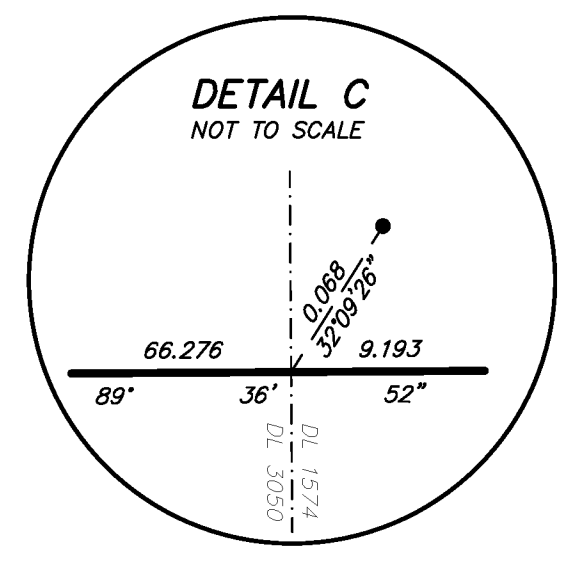
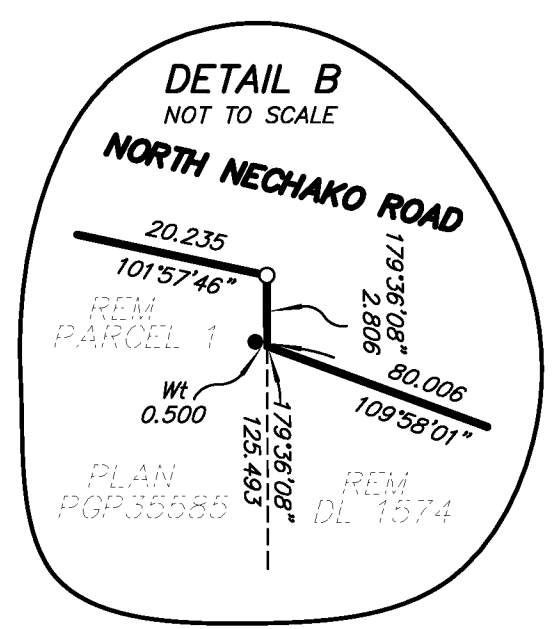
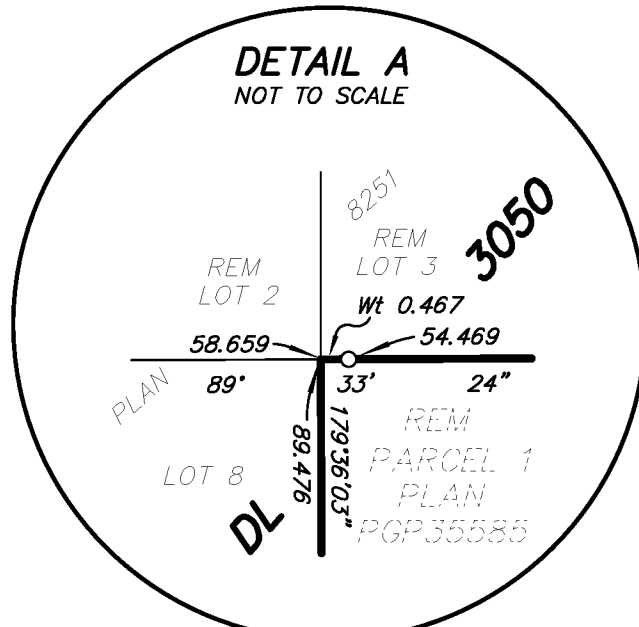
GRID BEARINGS ARE DERIVED FROM OBSERVATIONS BETWEEN CONTROL MONUMENTS 85H1140 AND 85H1197.

THIS PLAN SHOWS HORIZONTAL GROUND-LEVEL DISTANCES UNLESS OTHERWISE SPECIFIED. TO COMPUTE GRID DISTANCES, MULTIPLY GROUND-LEVEL DISTANCES BY THE COMBINED FACTOR OF 0.9995097 WHICH HAS BEEN DERIVED FROM CONTROL MONUMENT 85H1140.

LEGEND

- DENOTES CONTROL MONUMENT FOUND
- DENOTES STANDARD IRON POST FOUND
- DENOTES STANDARD IRON POST PLACED
- △ DENOTES TRAVERSE HUB PLACED

NOTE: THIS PLAN SHOWS ONE OR MORE WITNESS POSTS WHICH ARE NOT SET ON THE TRUE CORNER(S).



THE FIELD SURVEY REPRESENTED BY THIS PLAN WAS COMPLETED ON THE 8th DAY OF April, 2013. BRIAN O. BROWN, BCLS

THIS PLAN LIES WITHIN THE REGIONAL DISTRICT OF FRASER-FORT GEORGE.

McElhanney
McElhanney Associates
Land Surveying Ltd.
Prince George, B.C.
E-mail: pgmals@mcelhanney.com
Ph: (250) 561-2229 Fax: (250) 563-1941

DL- 1574 & 3050	File No. - 6082-CON
April 8, 2013	