

REFERENCE PLAN OF CONSOLIDATION OF LOTS 26 AND 27, DISTRICT LOT 936, CARIBOO DISTRICT, PLAN 10868.

PLAN EPP28433

BCGS 93G.097

PURSUANT TO SECTION 100(1)(b) OF THE LAND TITLE ACT.

INTEGRATED SURVEY AREA No. 39, PRINCE GEORGE, NAD83 (CSRS).

THE INTENDED PLOT SIZE OF THIS PLAN IS 432mm IN WIDTH BY 560mm IN HEIGHT (C SIZE) WHEN PLOTTED AT A SCALE OF 1:1250

20m 0 20 40 60 80m

ALL DISTANCES ARE SHOWN IN METRES AND DECIMALS THEREOF, UNLESS OTHERWISE INDICATED.

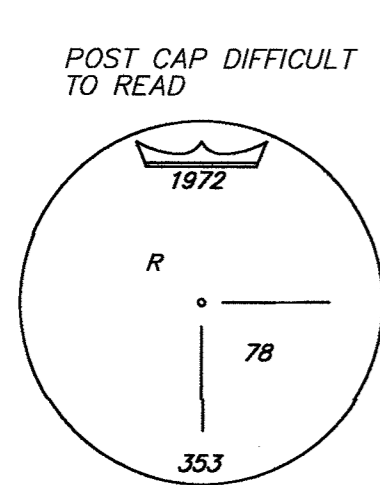
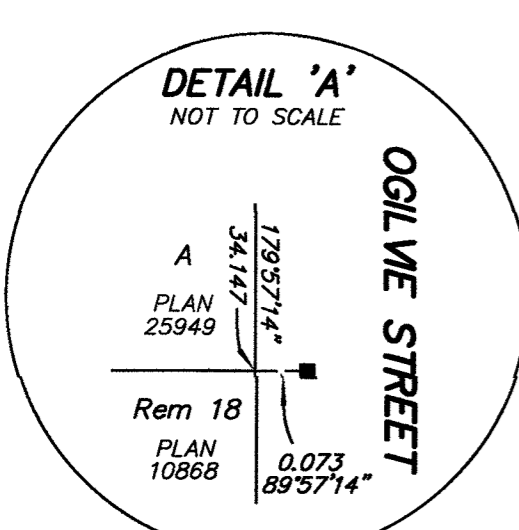
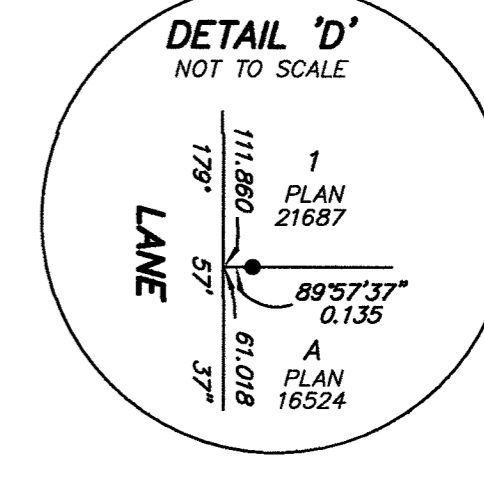
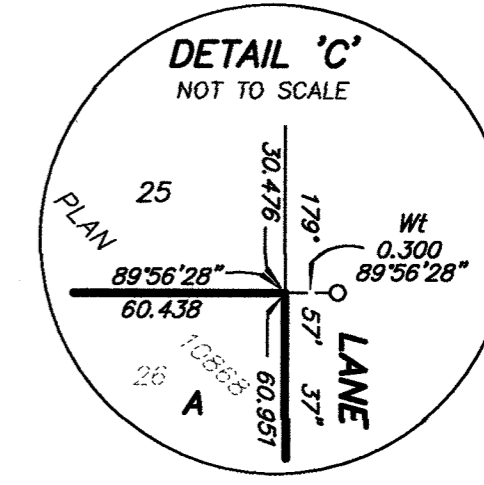
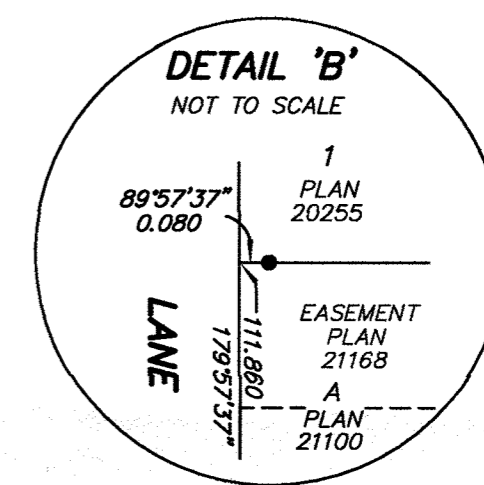
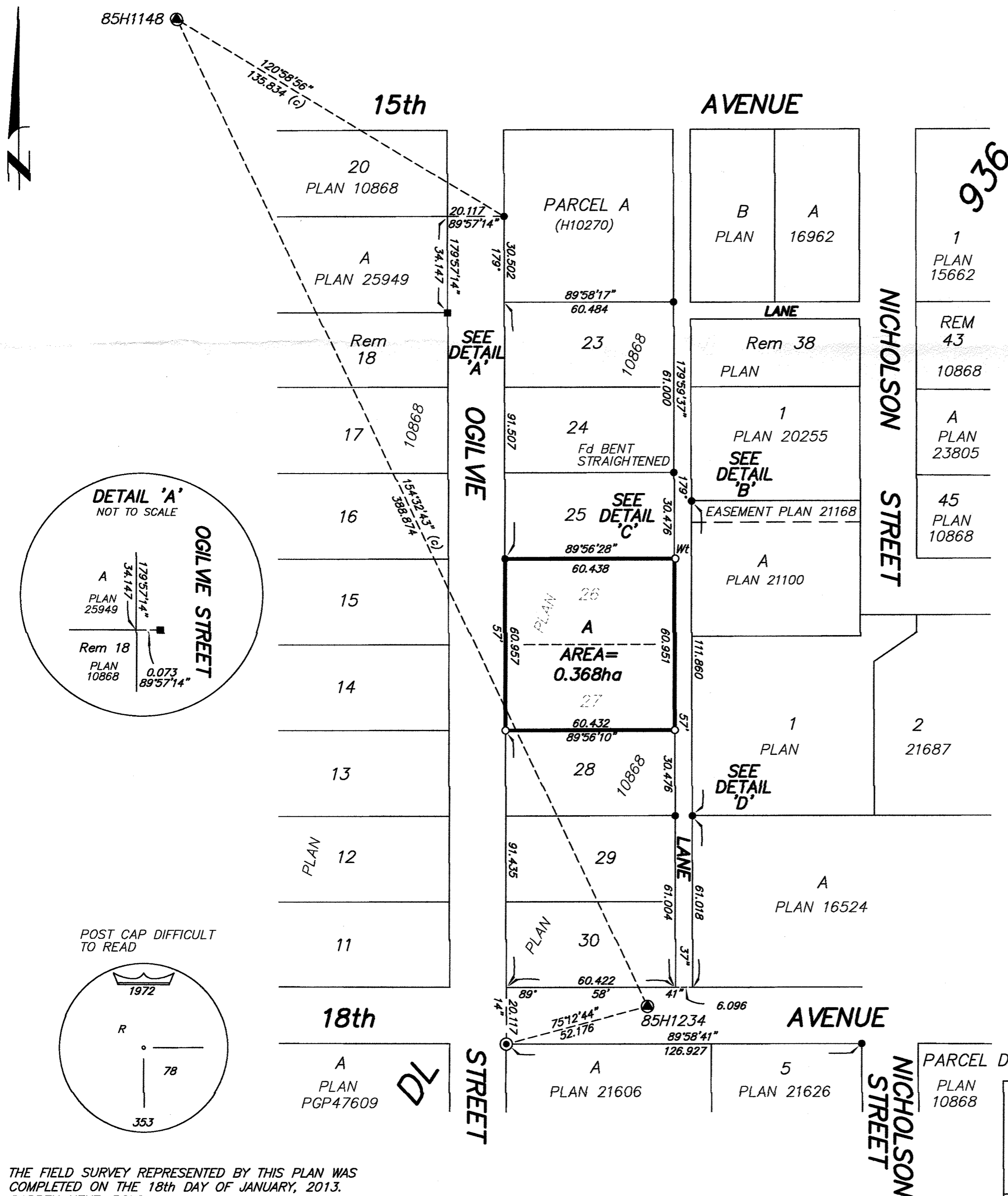
LEGEND

GRID BEARINGS ARE DERIVED FROM OBSERVATIONS BETWEEN GEODETIC CONTROL MONUMENTS 85H1234 AND 85H1148.

- DENOTES STANDARD CONCRETE POST FOUND
- DENOTES LEAD PLUG FOUND
- DENOTES STANDARD IRON POST FOUND
- DENOTES STANDARD IRON POST PLACED
- ⊙ DENOTES CONTROL MONUMENT FOUND

THIS PLAN SHOWS HORIZONTAL GROUND-LEVEL DISTANCES UNLESS OTHERWISE SPECIFIED. TO COMPUTE GRID DISTANCES, MULTIPLY GROUND-LEVEL DISTANCES BY THE AVERAGE COMBINED FACTOR OF 0.9995099 WHICH HAS BEEN DERIVED FROM 85H1234 AND 85H1148.

NOTE: THIS PLAN SHOWS ONE OR MORE WITNESS POSTS WHICH ARE NOT SET ON THE TRUE CORNER(S).



THE FIELD SURVEY REPRESENTED BY THIS PLAN WAS COMPLETED ON THE 18th DAY OF JANUARY, 2013. DARREN KENT, BCLS

THIS PLAN LIES WITHIN THE REGIONAL DISTRICT OF FRASER - FORT GEORGE.

McElhanney
 McElhanney Associates
 Land Surveying Ltd.
 Prince George, B.C.
 E-mail: pgmalls@mcelhanney.com
 Ph: (250) 561-2229 Fax: (250) 563-1941

DL- 936	File No. - 6083 - C
---------	---------------------