

PLAN OF SUBDIVISION OF LOT 17, DISTRICT LOT 2014, CARIBOO DISTRICT, PLAN EPP5390.

PLAN EPP28431

BCGS 93G.087

Pursuant to Section 67
of the Land Title Act.

THIS PLAN LIES WITHIN INTEGRATED SURVEY
AREA No. 39, PRINCE GEORGE, NAD83 (CSRS)

THE INTENDED PLOT SIZE OF THIS PLAN IS 560mm IN WIDTH BY
432mm IN HEIGHT (C SIZE) WHEN PLOTTED AT A SCALE OF 1:500

ALL DISTANCES ARE SHOWN IN METRES AND
DECIMALS THEREOF, UNLESS OTHERWISE INDICATED.

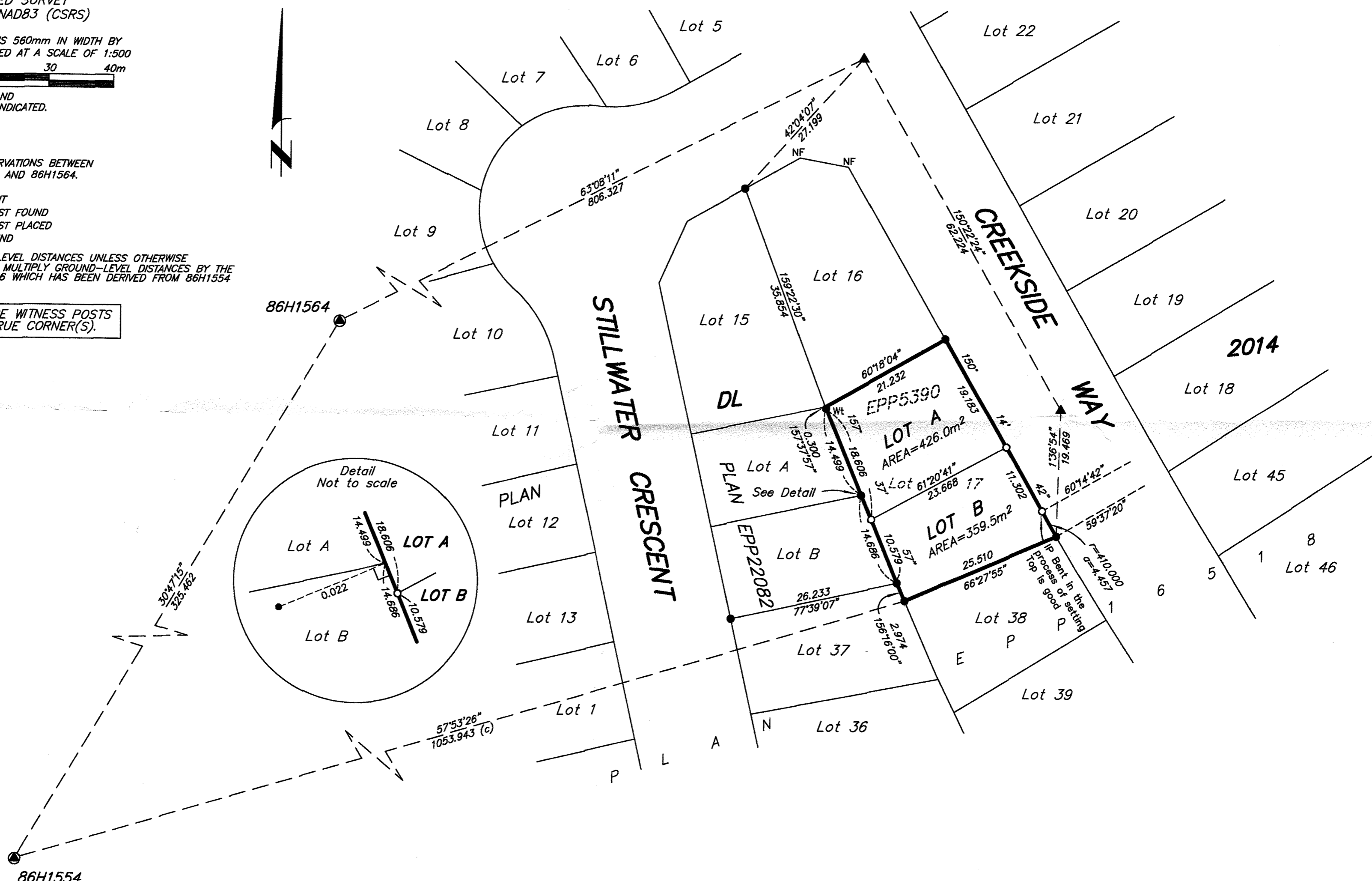
LEGEND

GRID BEARINGS ARE DERIVED FROM OBSERVATIONS BETWEEN
GEODETTIC CONTROL MONUMENTS 86H1554 AND 86H1564.

- DENOTES CONTROL MONUMENT
- DENOTES STANDARD IRON POST FOUND
- DENOTES STANDARD IRON POST PLACED
- ▲ DENOTES TRAVERSE HUB FOUND

THIS PLAN SHOWS HORIZONTAL GROUND-LEVEL DISTANCES UNLESS OTHERWISE
SPECIFIED. TO COMPUTE GRID DISTANCES, MULTIPLY GROUND-LEVEL DISTANCES BY THE
AVERAGE COMBINED FACTOR OF 0.9995086 WHICH HAS BEEN DERIVED FROM 86H1554
AND 86H1564.

THIS PLAN SHOWS ONE OR MORE WITNESS POSTS
WHICH ARE NOT SET ON THE TRUE CORNER(S).



THIS PLAN LIES WITHIN THE JURISDICTION OF THE
APPROVING OFFICER FOR THE CITY OF PRINCE GEORGE.
CPG File: SD100406

THE FIELD SURVEY REPRESENTED BY THIS PLAN
WAS COMPLETED ON THE 14th DAY OF FEBRUARY, 2013.
BRIAN BROWN, BCLS

THIS PLAN LIES WITHIN THE REGIONAL DISTRICT OF FRASER - FORT GEORGE.

McElhanney
McElhanney Associates
Land Surveying Ltd.
Prince George, B.C.

E-mail: pgm@mcElhanney.com
Ph: (250) 561-2229 Fax: (250) 563-1941

DL-2014 File No. - 5883-S-17

CPG File: SD100406