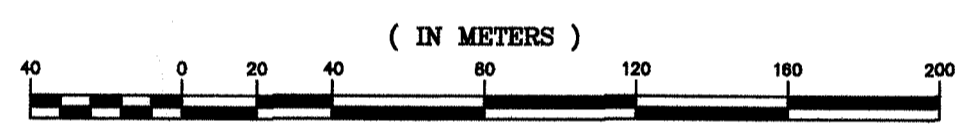


SUBDIVISION PLAN

OF DISTRICT LOT 4202 CARIBOO DISTRICT

BCGS 93G.096

GRAPHIC SCALE



1 : 2000

The intended plot size of this plan is 864 mm in width by 560 mm in height (D size) when plotted at a scale of 1:2000

Distances are horizontal ground level distances in metres and decimals thereof unless otherwise denoted.

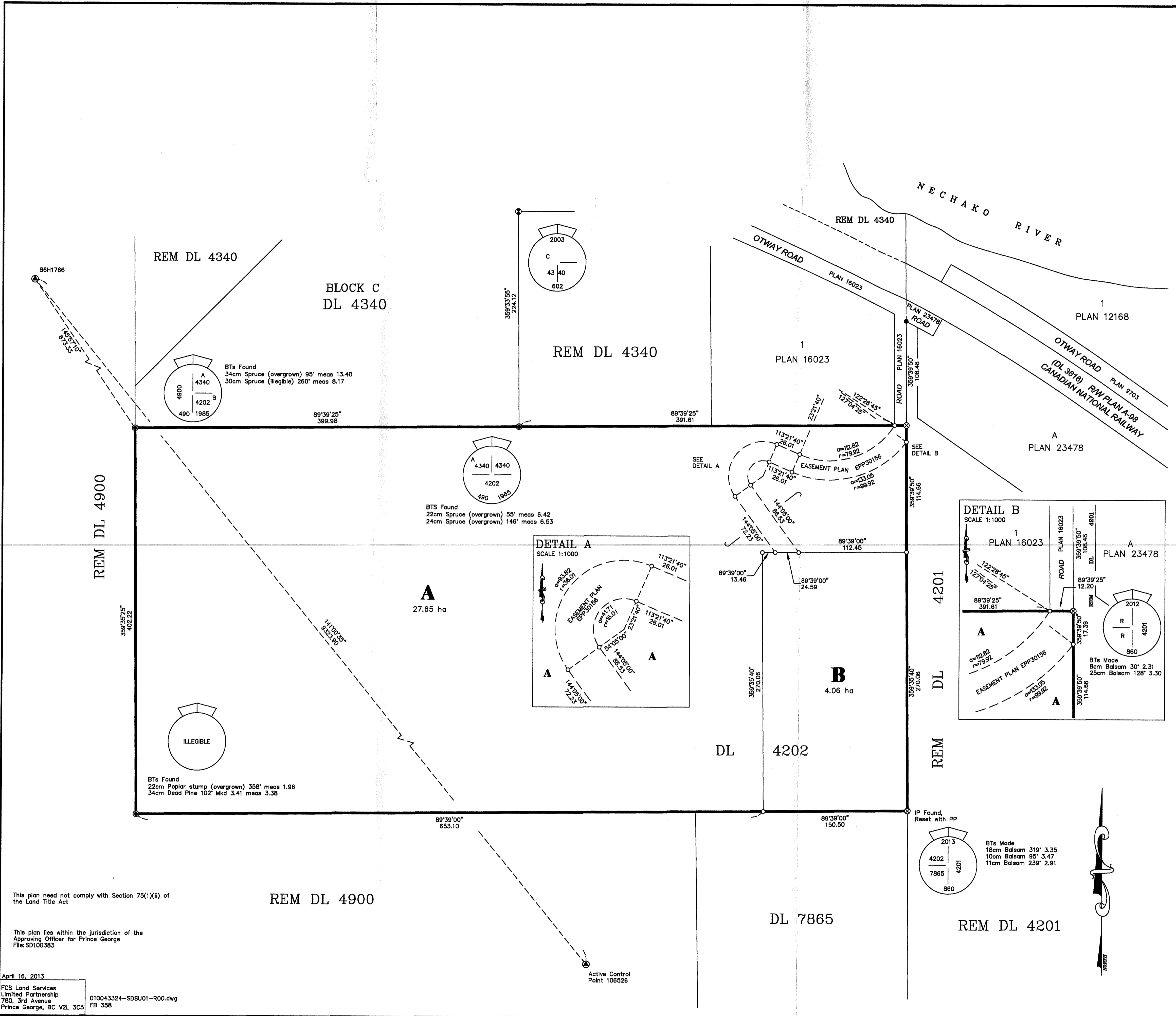
LEGEND: Grid bearings are derived from observations between Control Monument 86H1766 and the Prince George Active Control Point (106526), Integrated Survey Area Number 39, City of Prince George, NAD83(CSR5)

This plan shows ground level measured distances. To compute grid distances, multiply ground level distances by the average combined scale factor of 0.9995075 which has been derived from 86H1766.

- Control Monument Found
- ⊙ Non-Standard Capped Post Found
- ⊙ Standard Capped Post Found (Type 4)
- ⊙ Standard Iron Post Found (Type 5)
- ⊙ Standard Capped Post Placed (Type 4)
- ⊙ Standard Iron Post Placed (Type 5)
- Bearings to bearing trees are magnetic

The field survey represented by this plan was completed by Tyler Mikkelsen, BCLS on the 11th day of January, 2013

THIS PLAN LIES WITHIN THE REGIONAL DISTRICT OF FRASER-FORT GEORGE



This plan need not comply with Section 75(1)(i) of the Land Title Act

This plan lies within the jurisdiction of the Approving Officer for Prince George File:SD100383

April 15, 2013
 FCS Land Services
 Limited Partnership
 780, 3rd Avenue
 Prince George, BC V2L 3C5
 010043324--SDSU01--R00.dwg
 FB 358