

EXPLANATORY PLAN OF EASEMENT OVER PARTS OF LOTS A AND B, DL 2014, CARIBOO DISTRICT, PLAN EPP27228.

PLAN EPP27229

BCGS 93G.087

PURSUANT TO SECTION 99(1)(e) OF THE LAND TITLE ACT.

INTEGRATED SURVEY AREA No. 39, PRINCE GEORGE, NAD83 (CSRS)

THE INTENDED PLOT SIZE OF THIS PLAN IS 432mm IN WIDTH BY 280mm IN HEIGHT (B SIZE) WHEN PLOTTED AT A SCALE OF 1:500

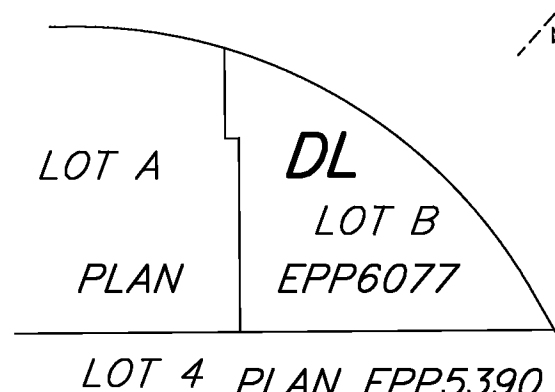


ALL DISTANCES ARE HORIZONTAL GROUND-LEVEL AND ARE SHOWN IN METRES AND DECIMALS THEREOF, UNLESS OTHERWISE INDICATED.

LEGEND

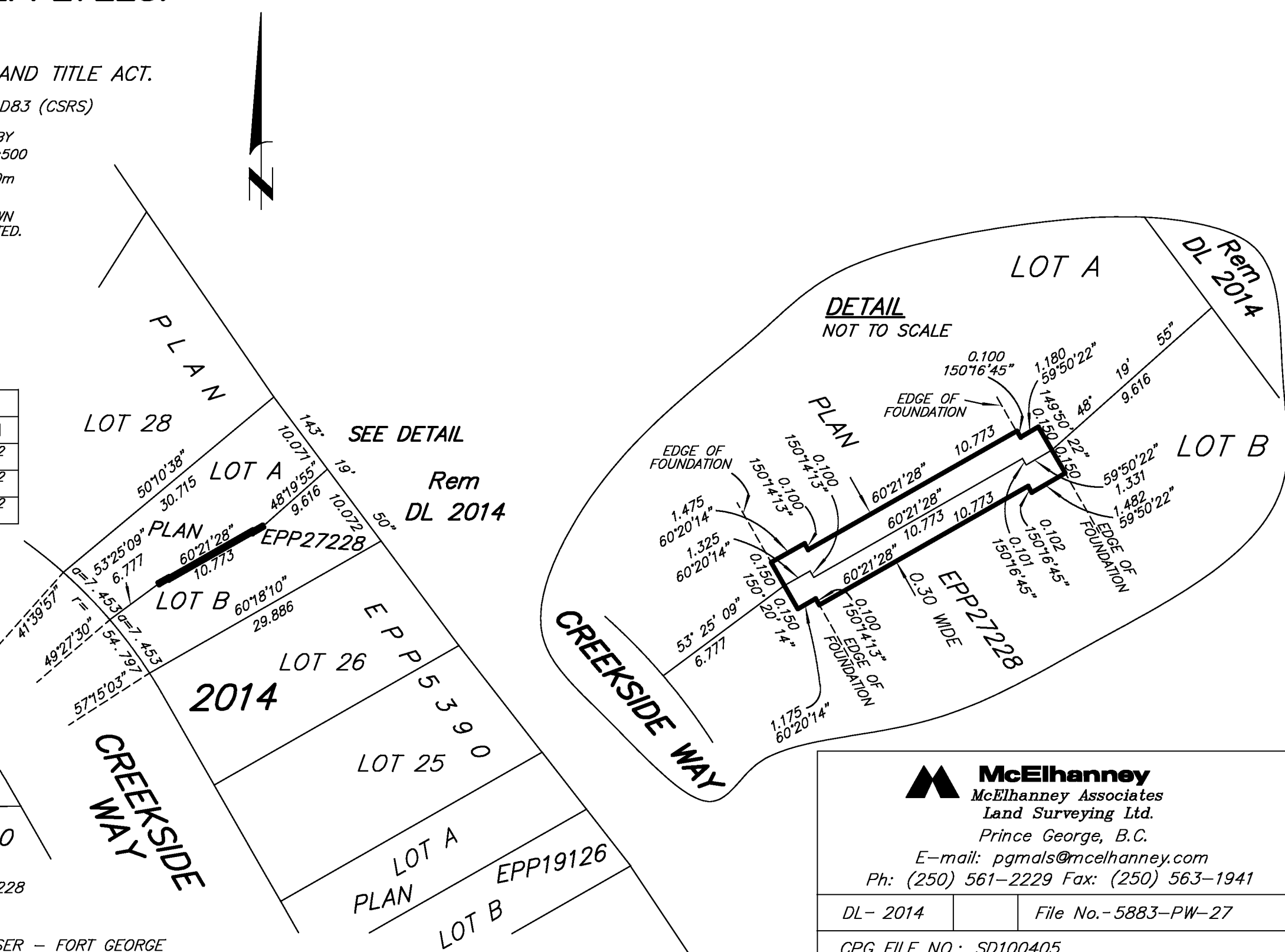
GRID BEARINGS ARE DERIVED FROM PREVIOUSLY INTEGRATED PLAN EPP27228

BOOK OF REFERENCE	
DESCRIPTION	AREA
LOT A, DL 2014, CARIBOO DISTRICT, PLAN EPP27228	2.0m ²
LOT B, DL 2014, CARIBOO DISTRICT, PLAN EPP27228	2.0m ²
TOTAL	4.0m ²



THIS PLAN IS BASED ON THE FOLLOWING LAND TITLE AND SURVEY AUTHORITY OF BC RECORDS: PLAN EPP27228 DARREN KENT, BCLS 31st DAY OF JANUARY, 2013.

THIS PLAN LIES WITHIN THE REGIONAL DISTRICT OF FRASER - FORT GEORGE



McElhanney
 McElhanney Associates
 Land Surveying Ltd.
 Prince George, B.C.
 E-mail: pgmals@mcelhanney.com
 Ph: (250) 561-2229 Fax: (250) 563-1941

DL- 2014	File No.- 5883-PW-27
CPG FILE NO.: SD100405	