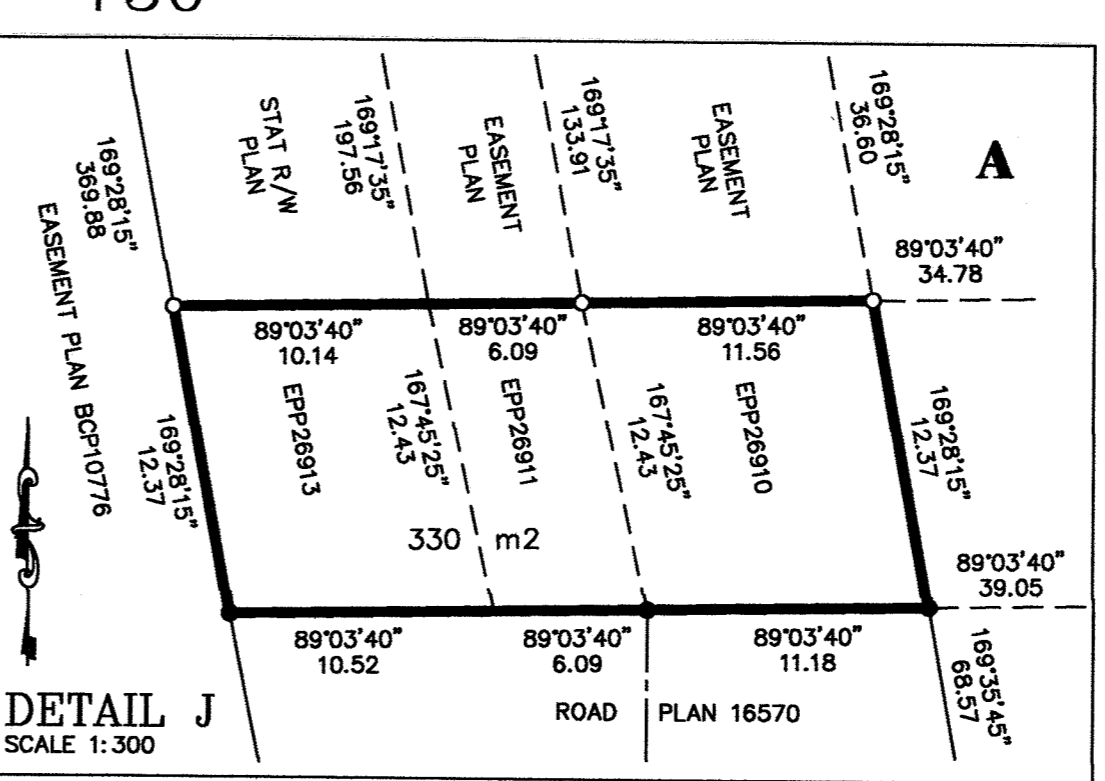
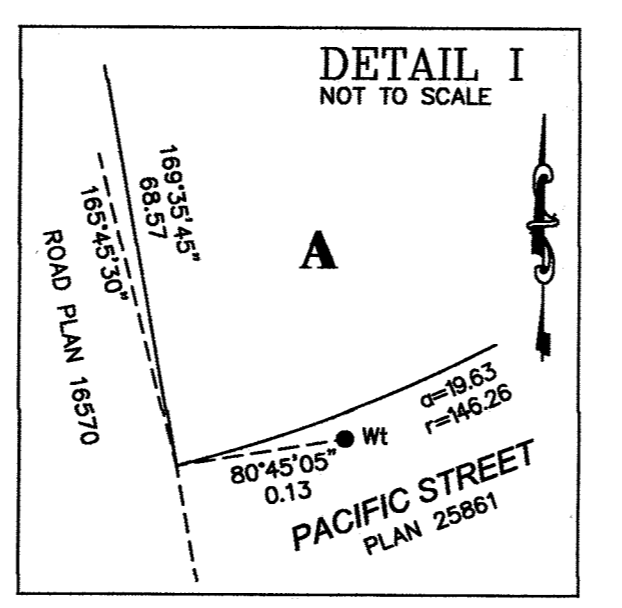
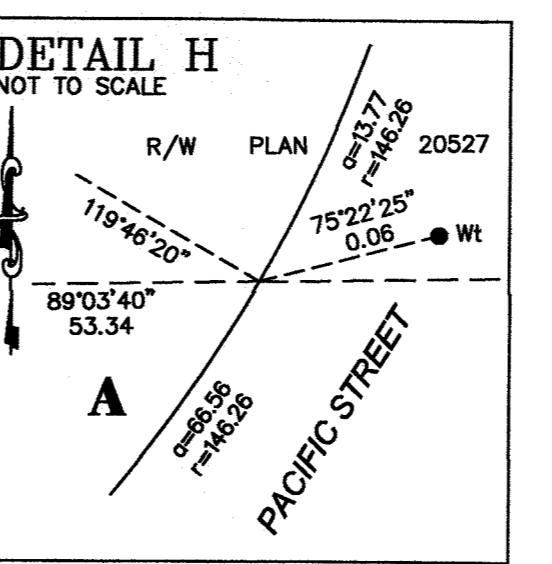
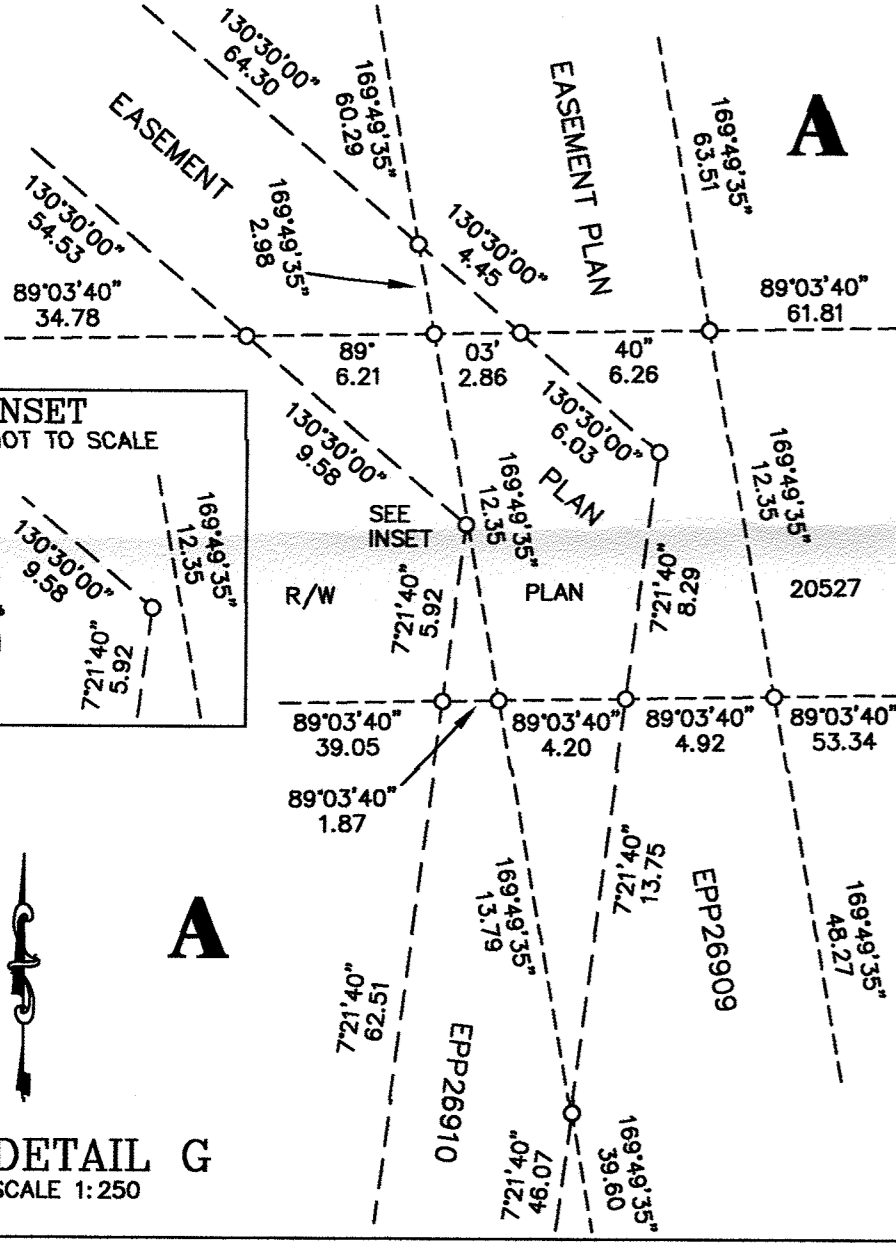
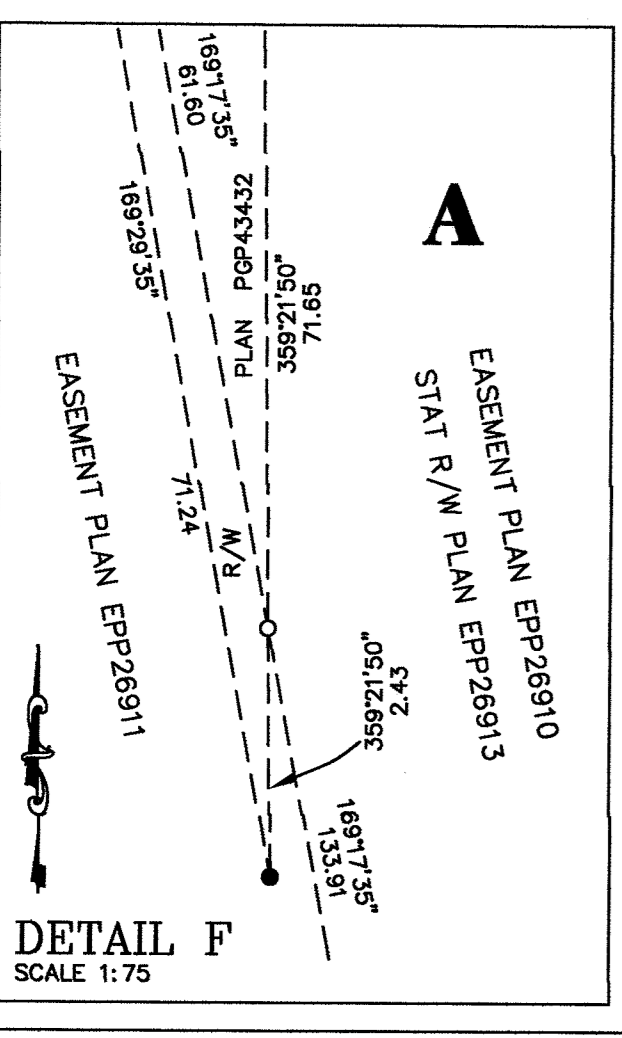
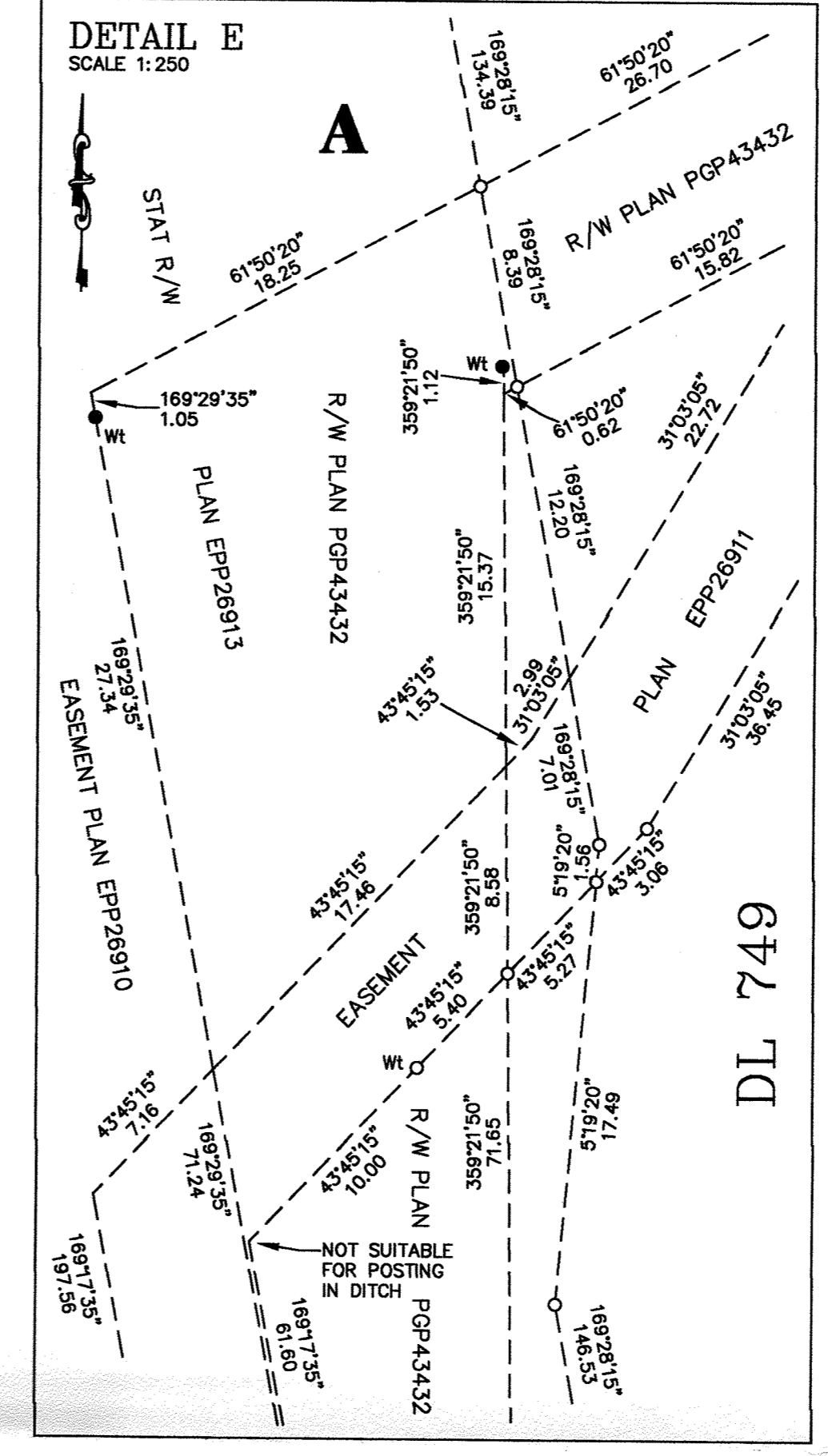
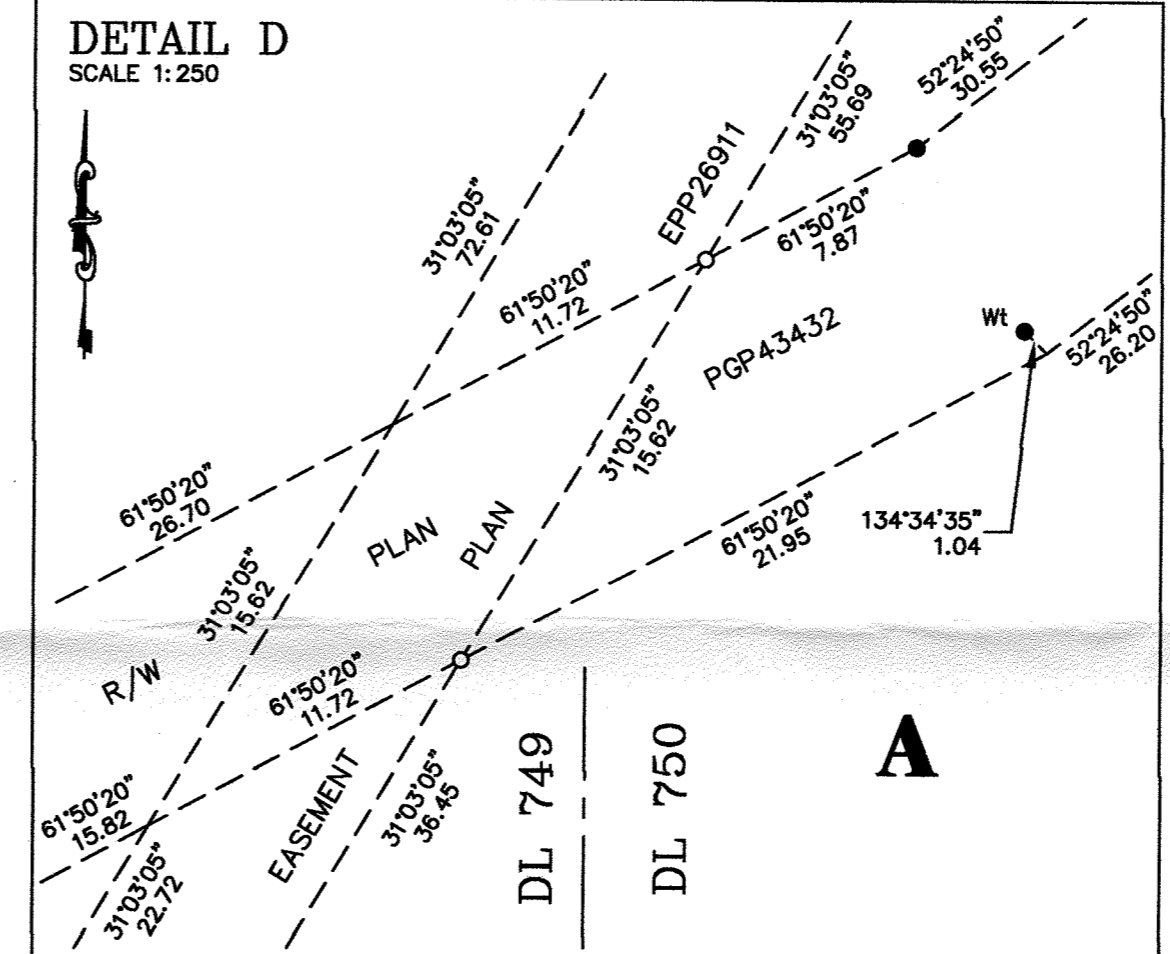
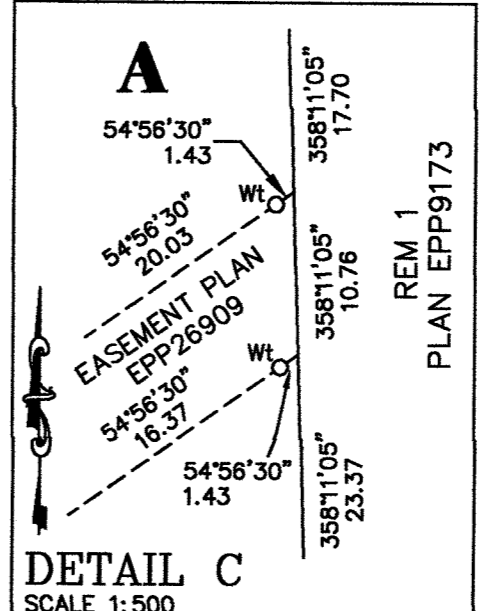
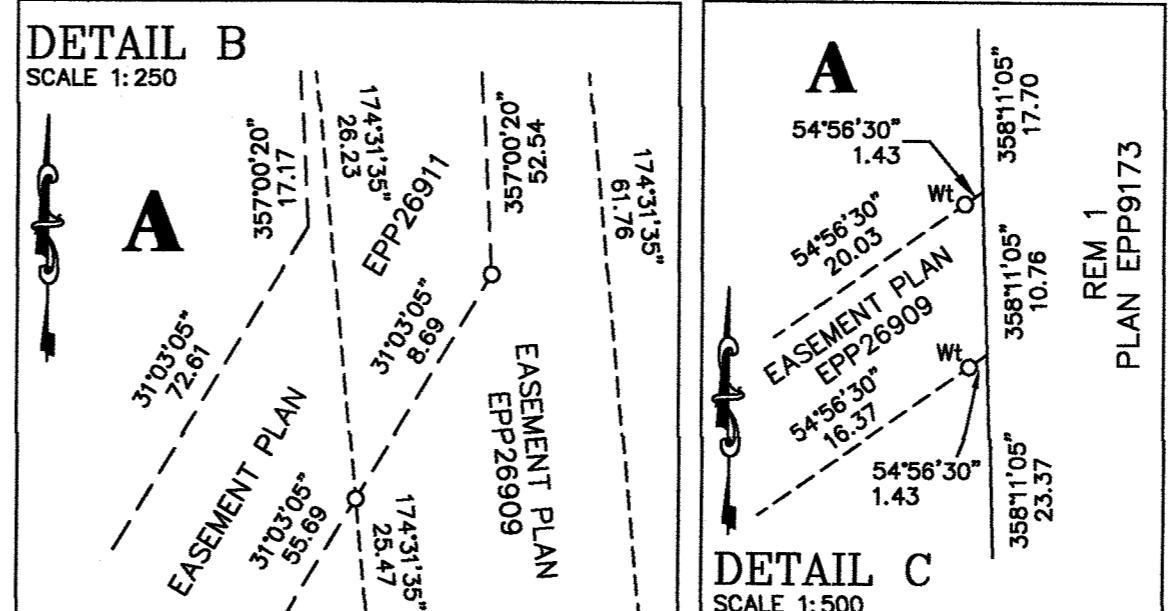
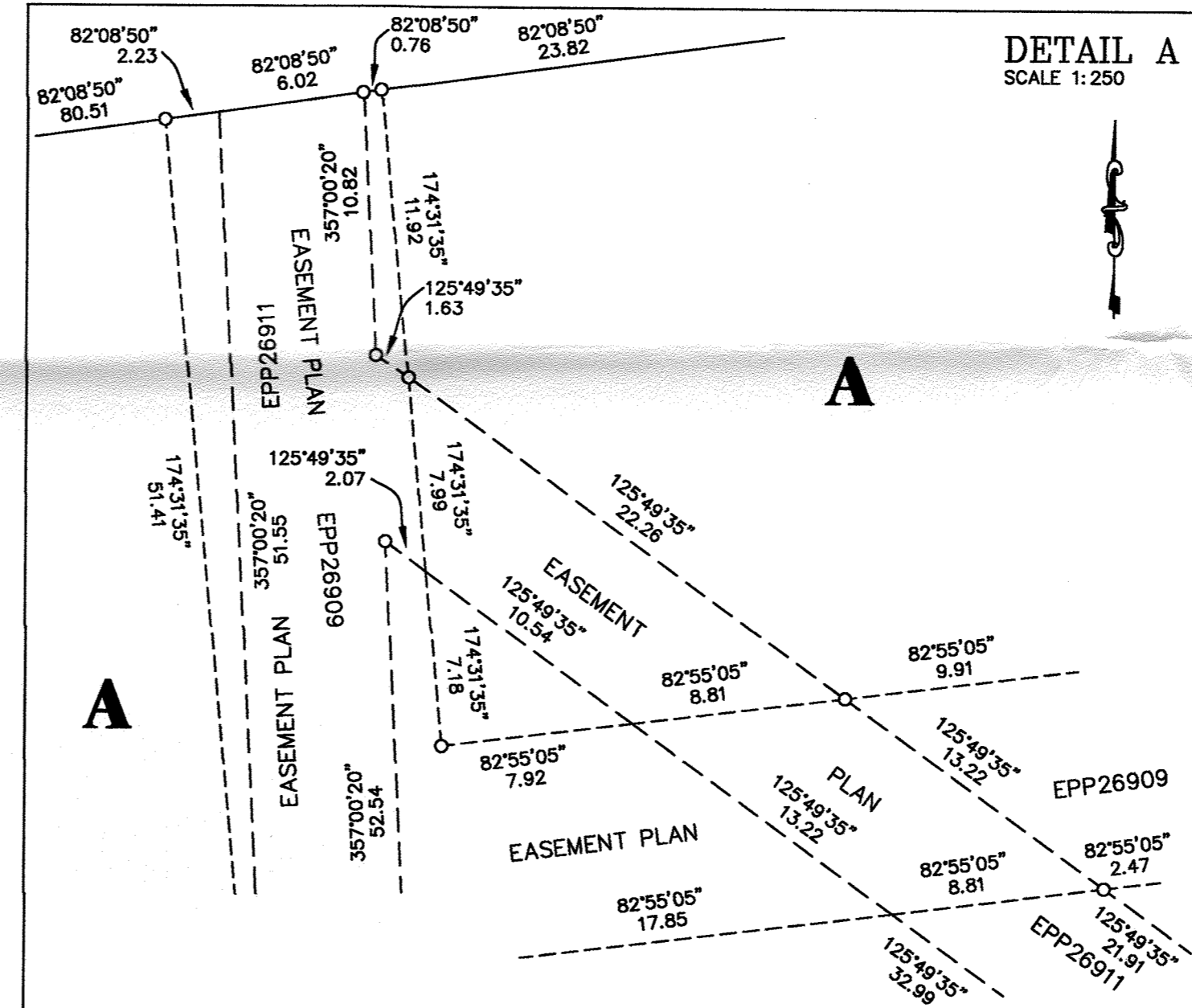
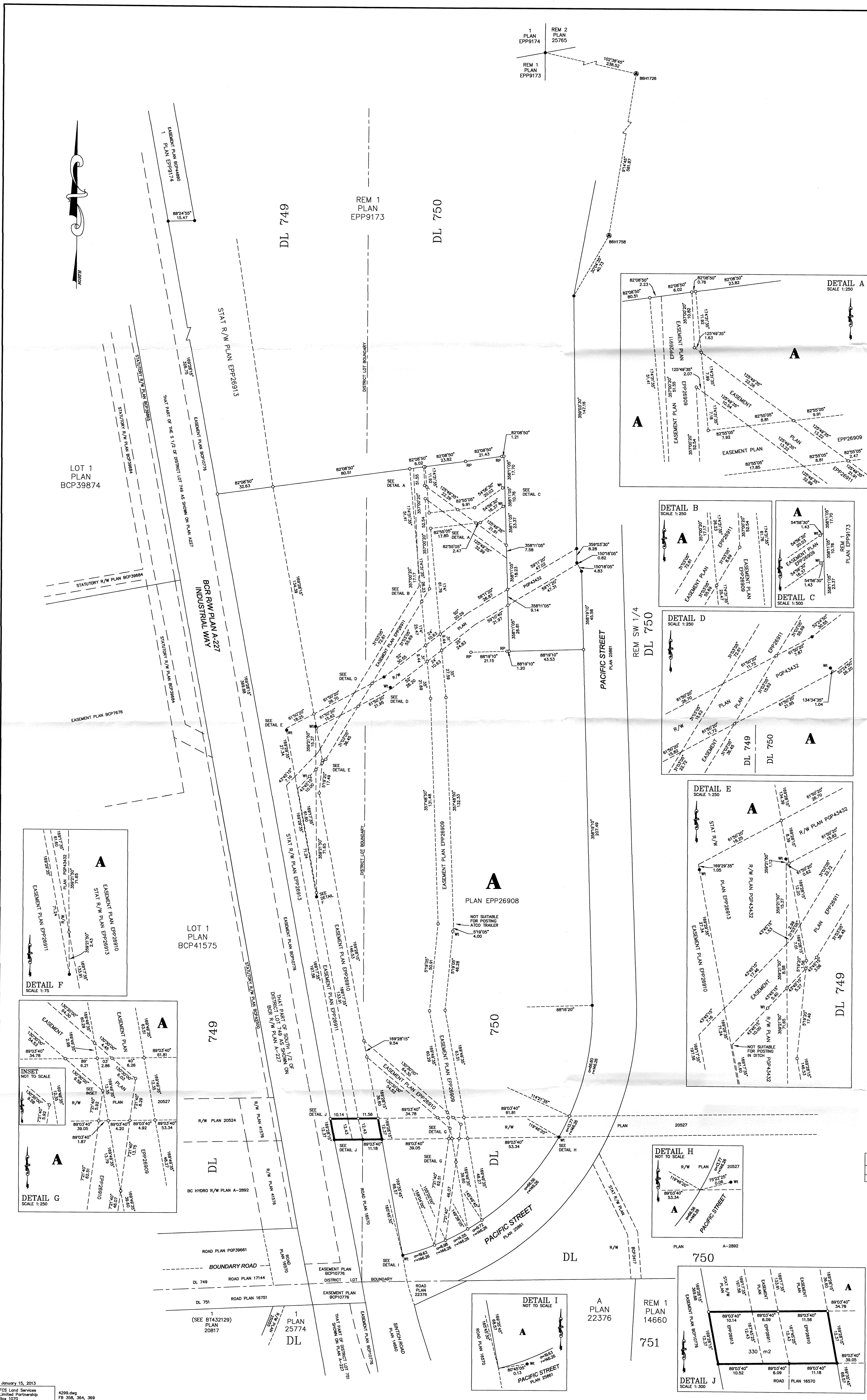
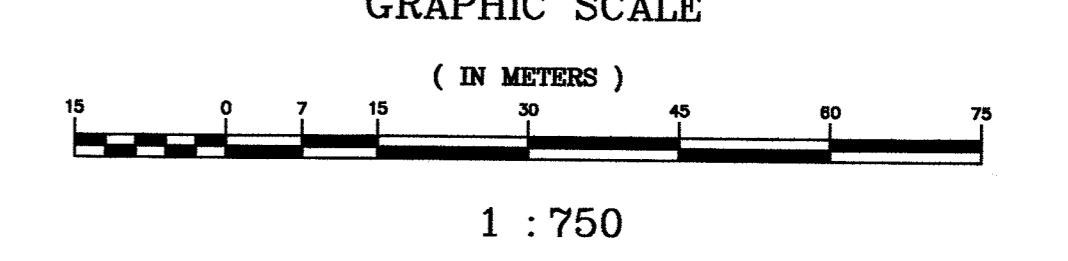


PLAN EPP26912



**STATUTORY RIGHT-OF-WAY PLAN**  
 FOR BC HYDRO OVER PART OF LOT A DISTRICT LOTS 749 AND 750 CARIBOO DISTRICT PLAN EPP26908

Pursuant to Section 113 of the Land Title Act BCGS 93G.087



1 : 750

The intended plot size of this plan is 864 mm in width by 1120 mm in height (E size) when plotted at a scale of 1:750

Distances are horizontal ground level distances in metres and decimals thereof unless otherwise denoted.

LEGEND: Old bearings are derived from observations between control monuments 86H1726 and 86H1758, Integrated Survey Area Number 30, City of Prince George, HADS(CSRS)

This plan shows ground level measured distances. Prior to computation of UTM co-ordinates, multiply by the scale factor of 0.9995120

Note: This plan shows one or more witness posts which are set along the production of the property boundary unless otherwise noted.

BOOK OF REFERENCE	
PARCEL	AREA
LOT A DISTRICT LOTS 749 AND 750 CARIBOO DISTRICT PLAN EPP26908	330 m <sup>2</sup>

The field survey represented by this plan was completed by W.D. McIntosh, BCLS on the 7th day of January, 2013

THIS PLAN LIES WITHIN THE REGIONAL DISTRICT OF FRASER-FORT GEORGE