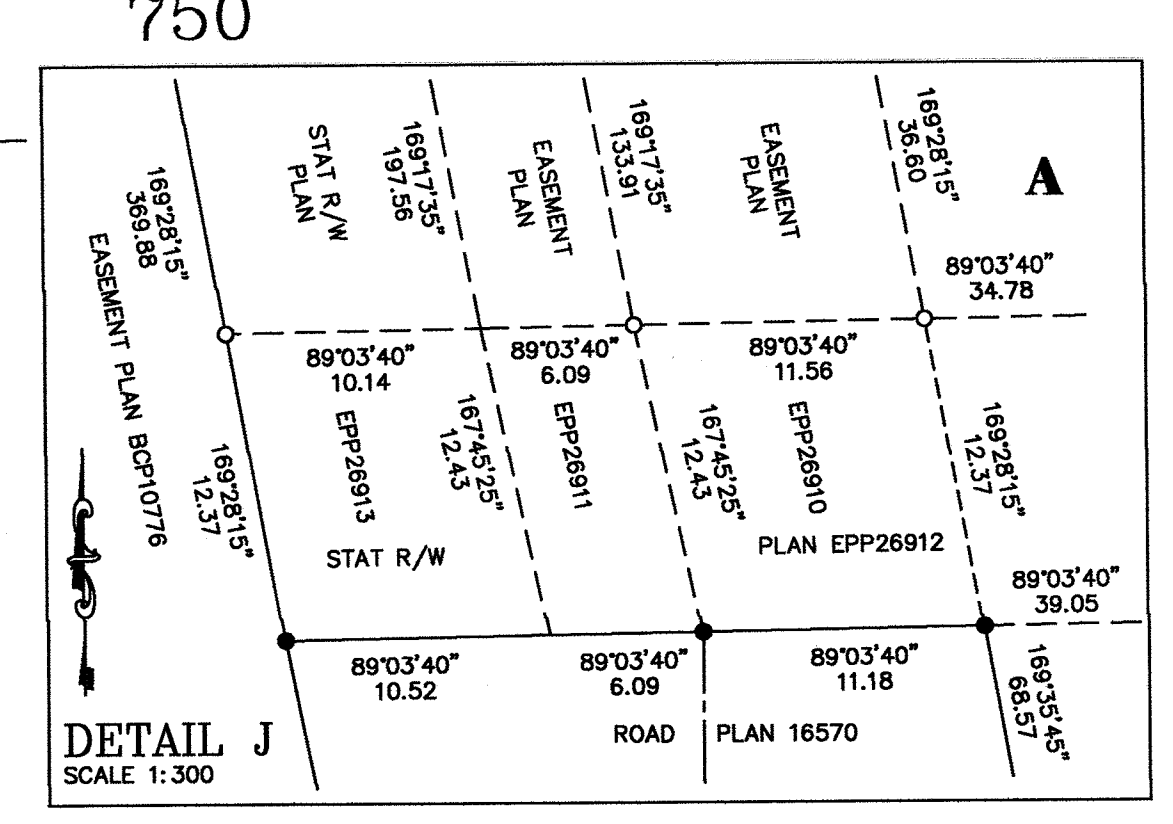
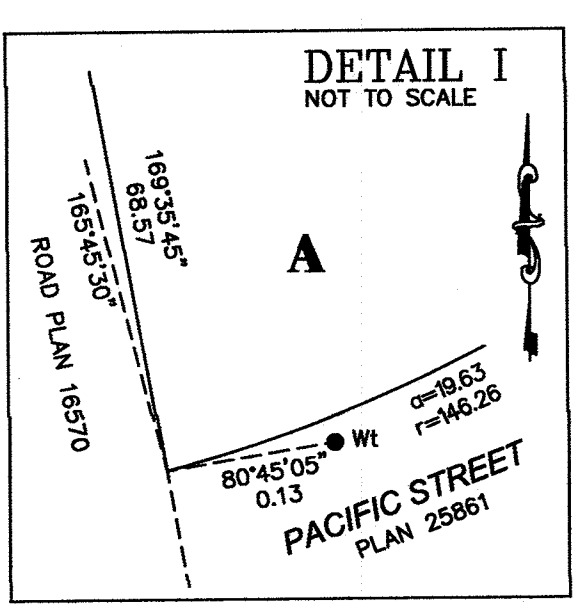
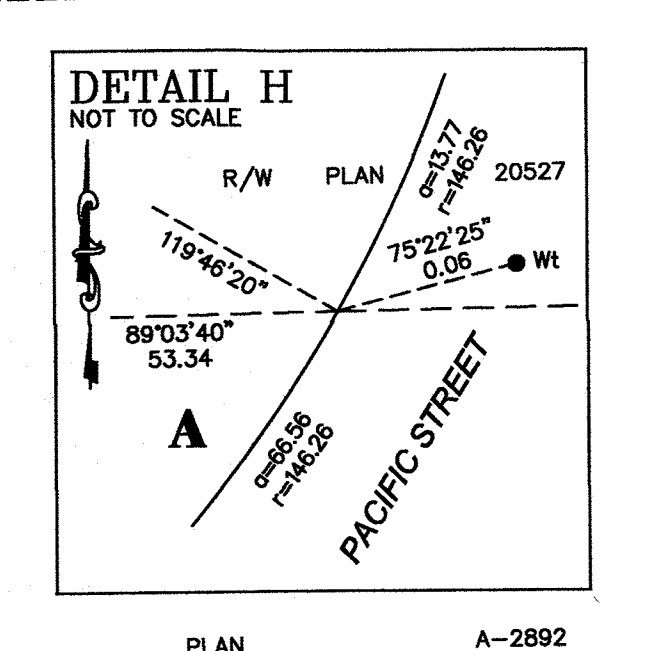
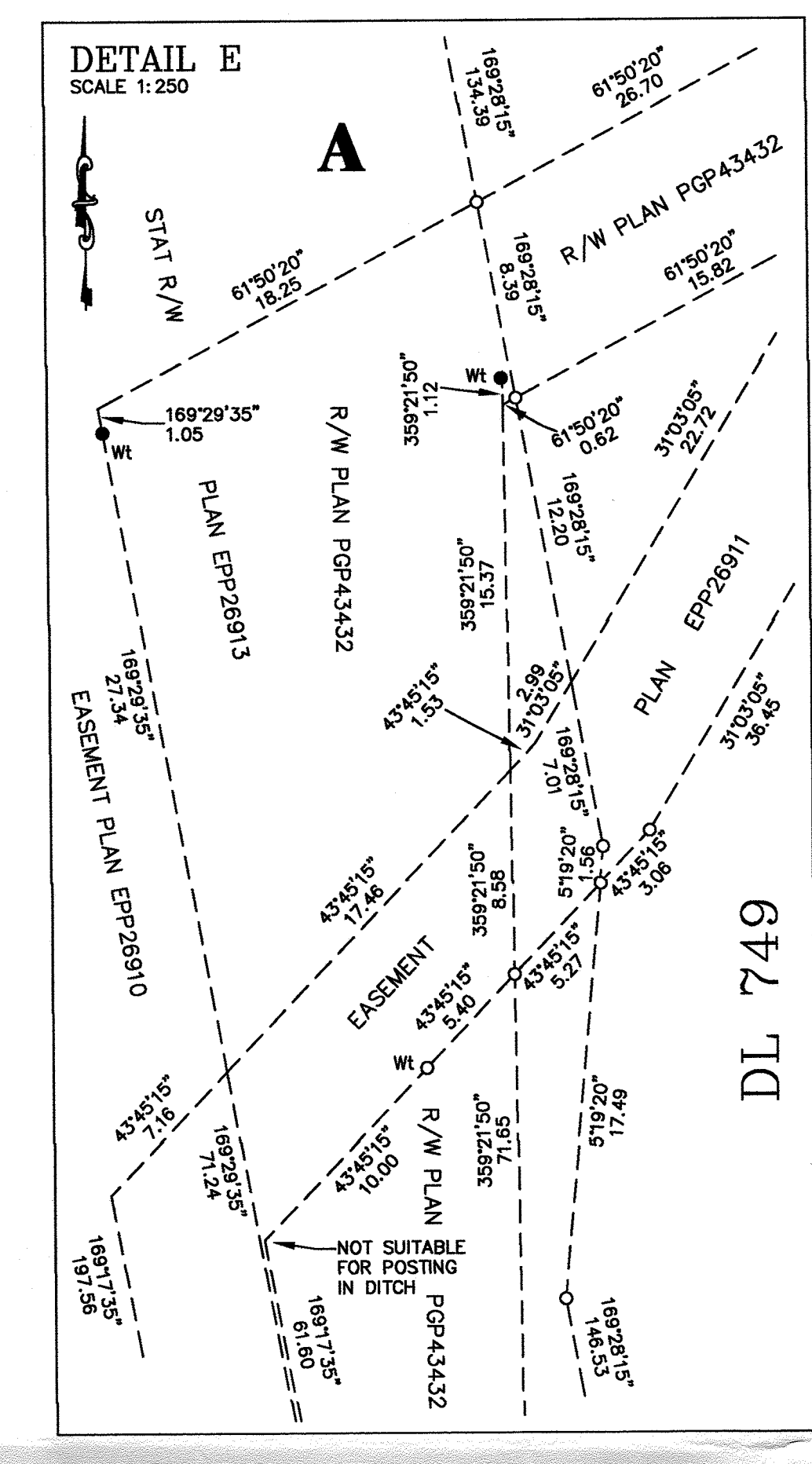
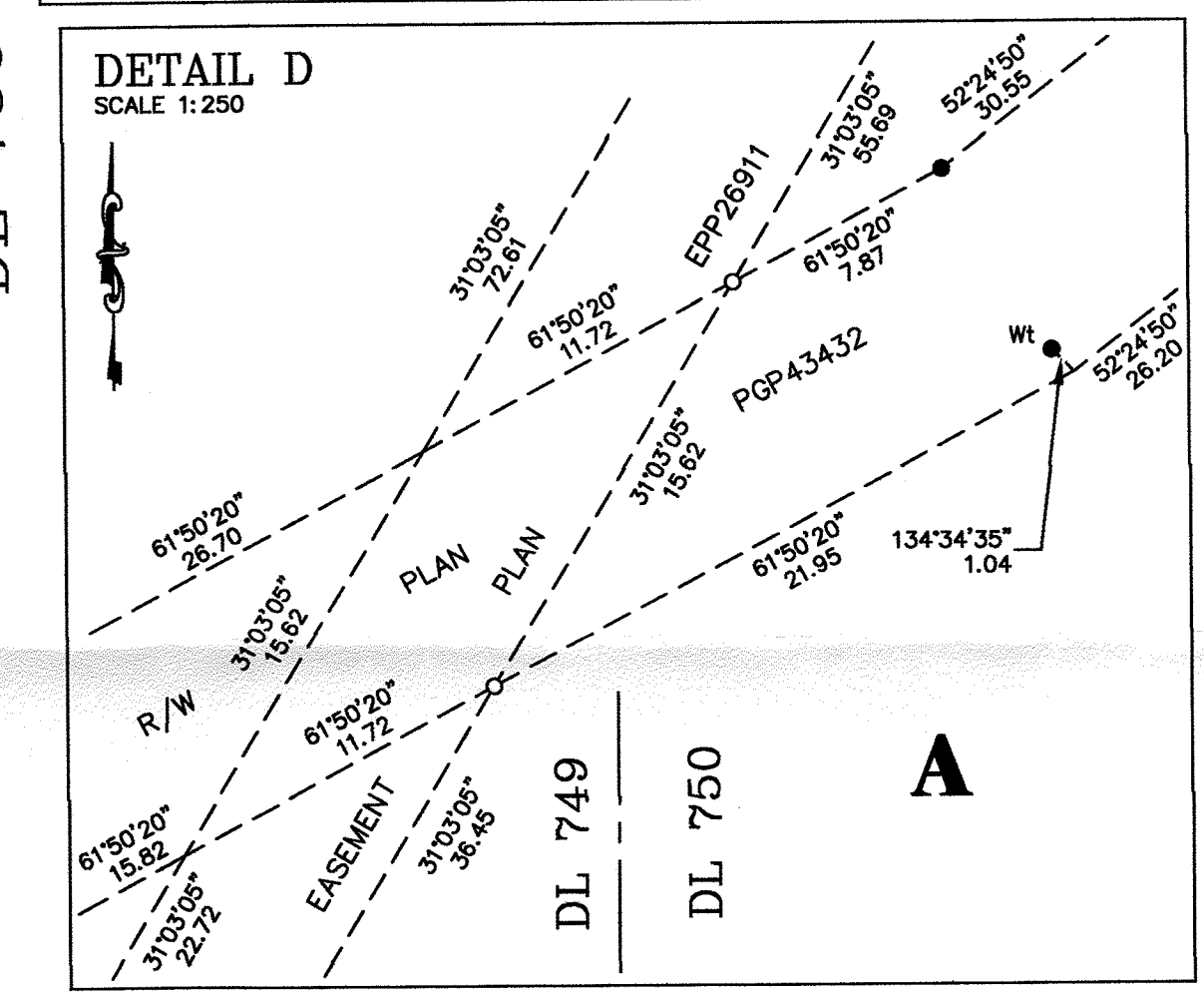
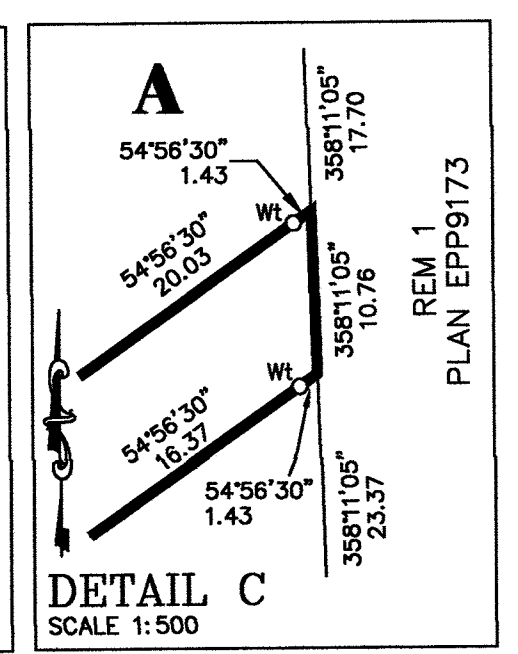
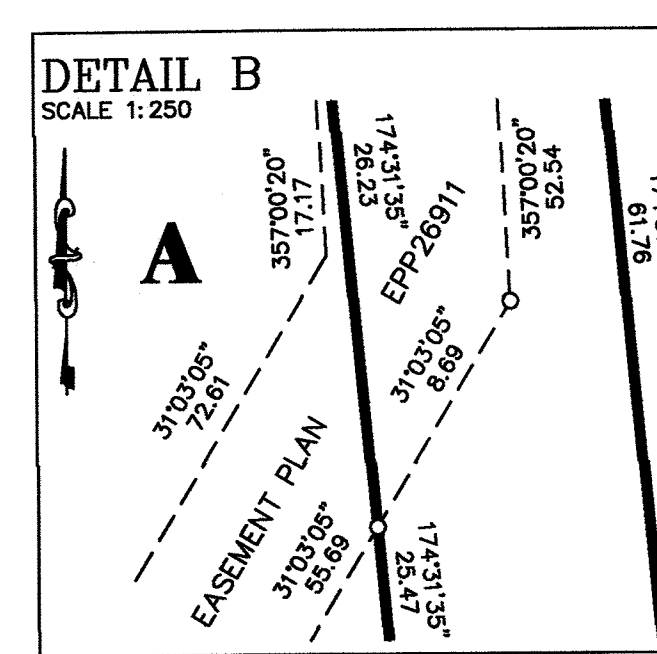
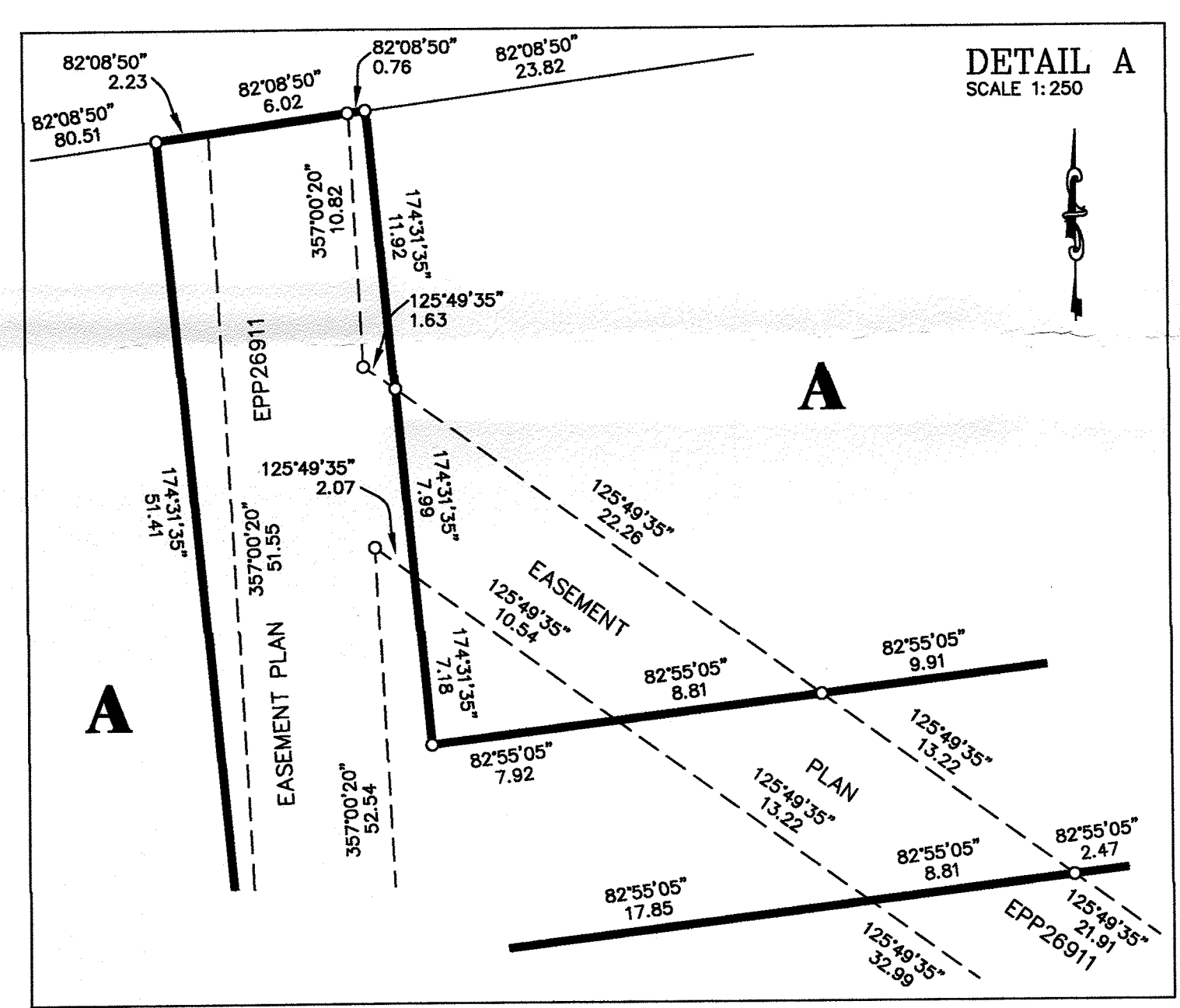
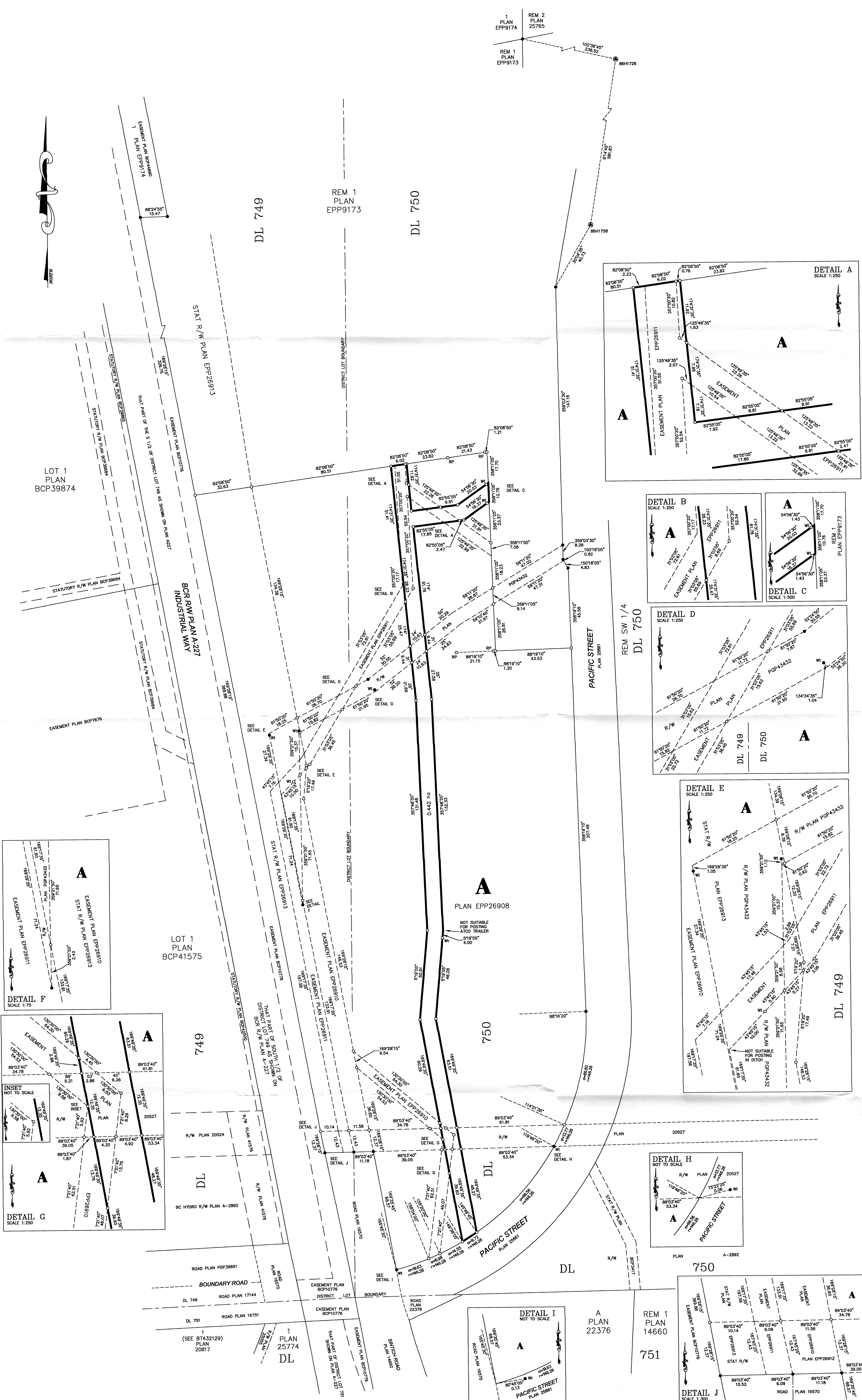
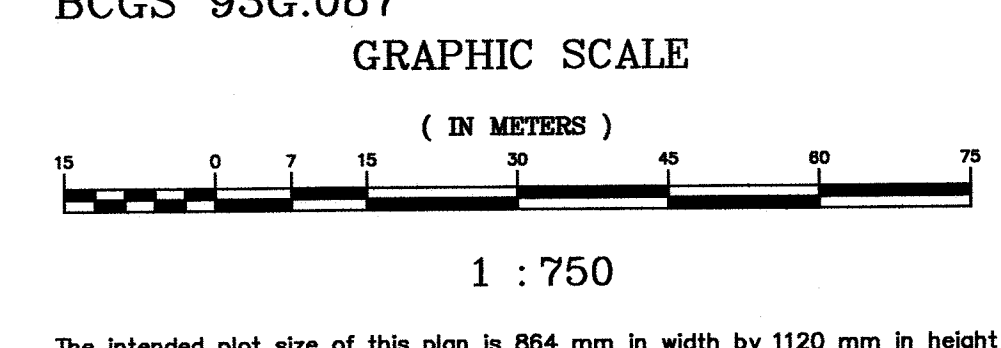


PLAN EPP26909



**REFERENCE PLAN**  
 TO ACCOMPANY EASEMENT OVER  
 PART OF LOT 1 DISTRICT LOTS  
 749 AND 750 CARIBOO DISTRICT  
 PLAN EPP26908  
 Pursuant to Section 99 of the Land Title Act  
 BCGS 93G.087



The intended plot size of this plan is 854 mm in width by 1120 mm in height (F size) when posted at a scale of 1:750. Distances are horizontal ground level distances in metres and decimals thereof unless otherwise denoted.

**LEGEND:** Grid bearings are derived from observations between control monuments 881728 and 881728, Integrated Survey Area Number 39, City of Prince George, NAD83(CRS).

This plan shows ground level measured distances. Prior to computation of UTM co-ordinates, multiply by the scale factor of 0.9995120.

- Standard Iron Post Found (Type 5)
- Control Monument Found
- Standard Iron Post Piled (Type 3)

Note: This plan shows one or more witness posts which are set along the production of the property boundary unless otherwise noted.

BOOK OF REFERENCE	
PARCEL	AREA
LOT 1 DISTRICT LOTS 749 AND 750 CARIBOO DISTRICT PLAN EPP26908	0.442 ha

The field survey represented by this plan was completed by M.D. McInnes, B.S.S on the 7th day of January, 2013.  
 THIS PLAN LIES WITHIN THE REGIONAL DISTRICT OF FRASER-FORT GEORGE