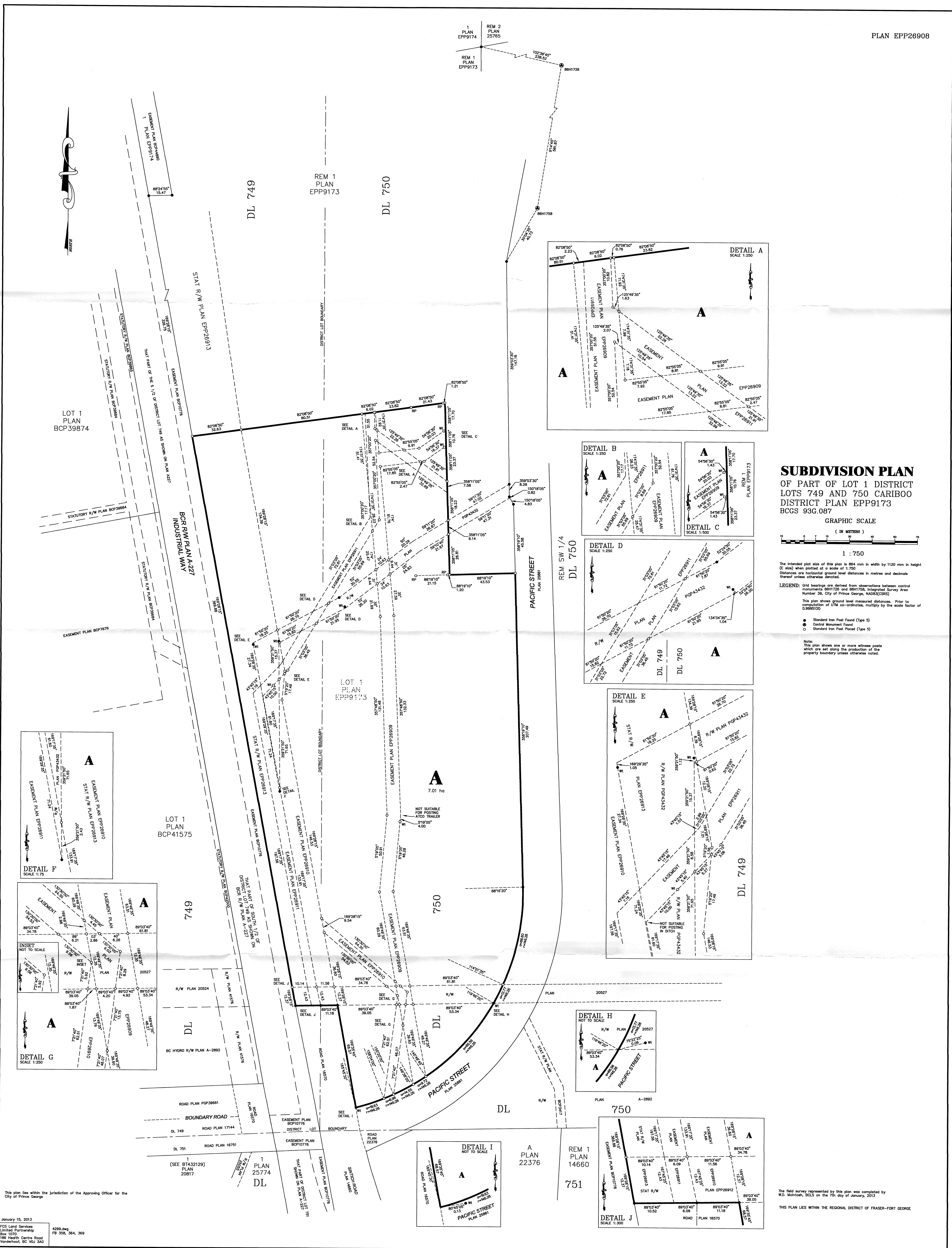


PLAN EPP26908



SUBDIVISION PLAN
 OF PART OF LOT 1 DISTRICT
 LOTS 749 AND 750 CARIBOO
 DISTRICT PLAN EPP9173
 BCGS 93G.087

GRAPHIC SCALE
 (IN METERS)

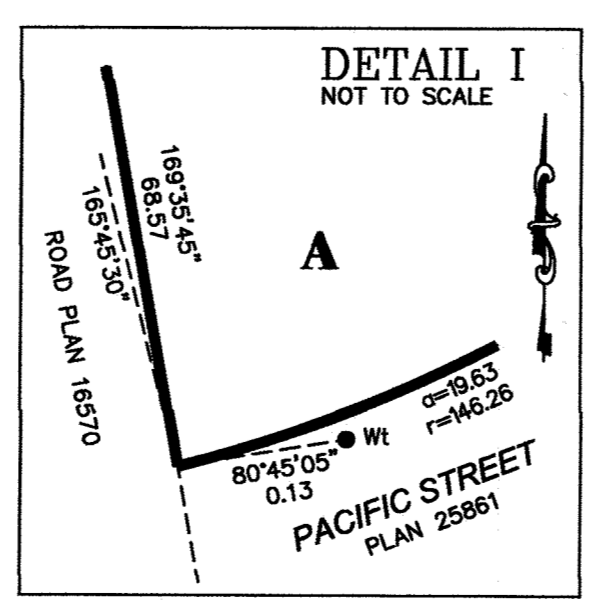
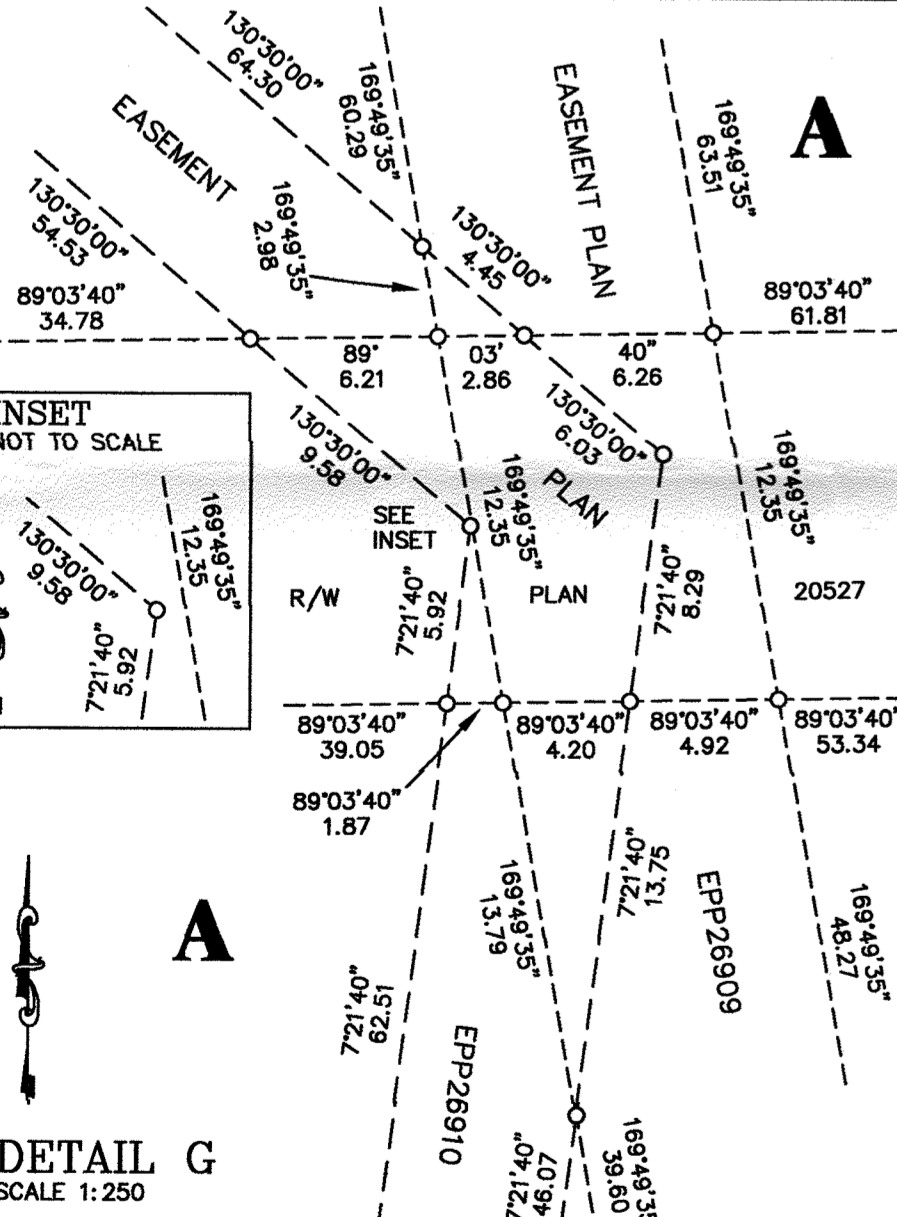
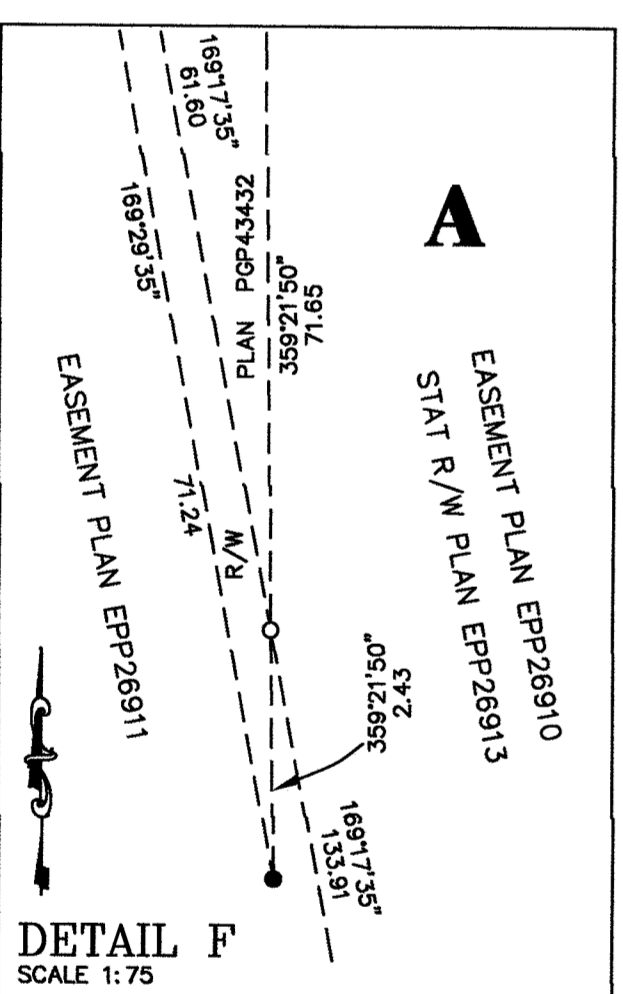
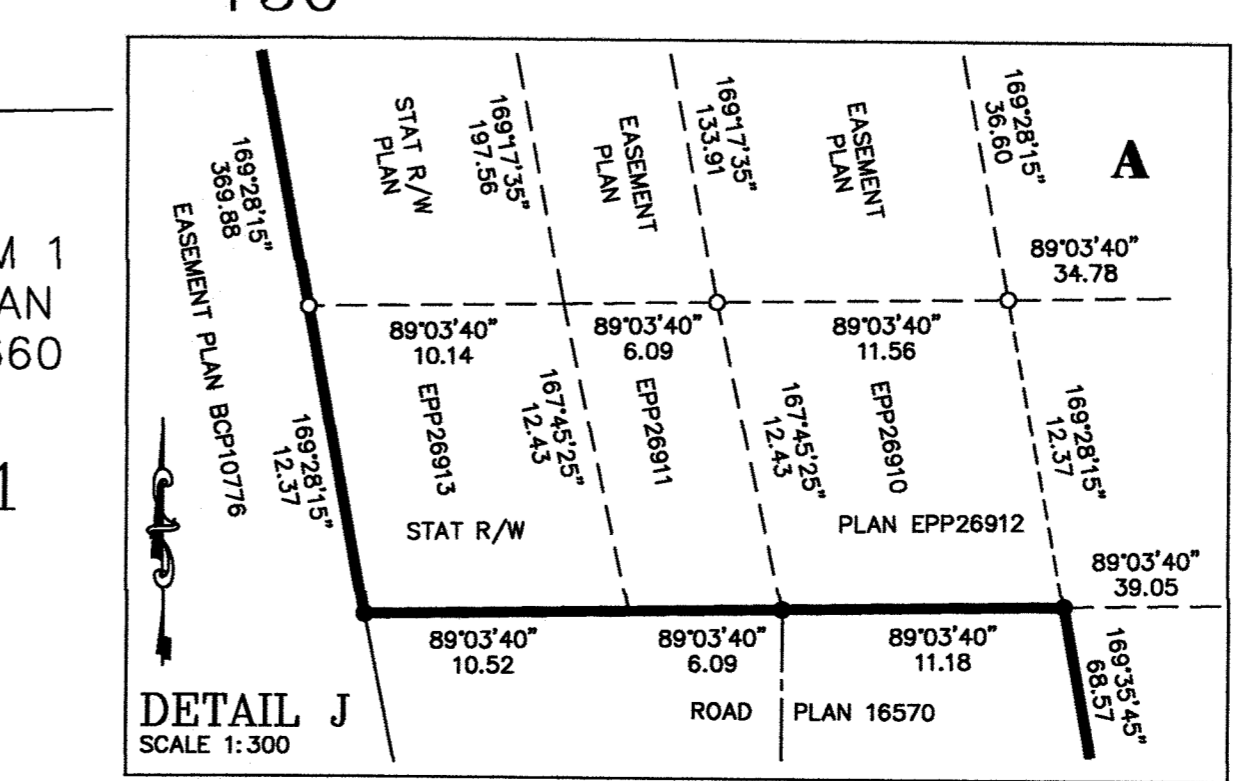
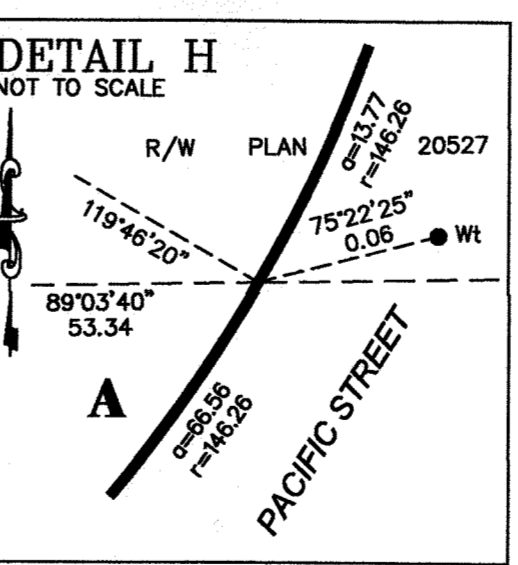
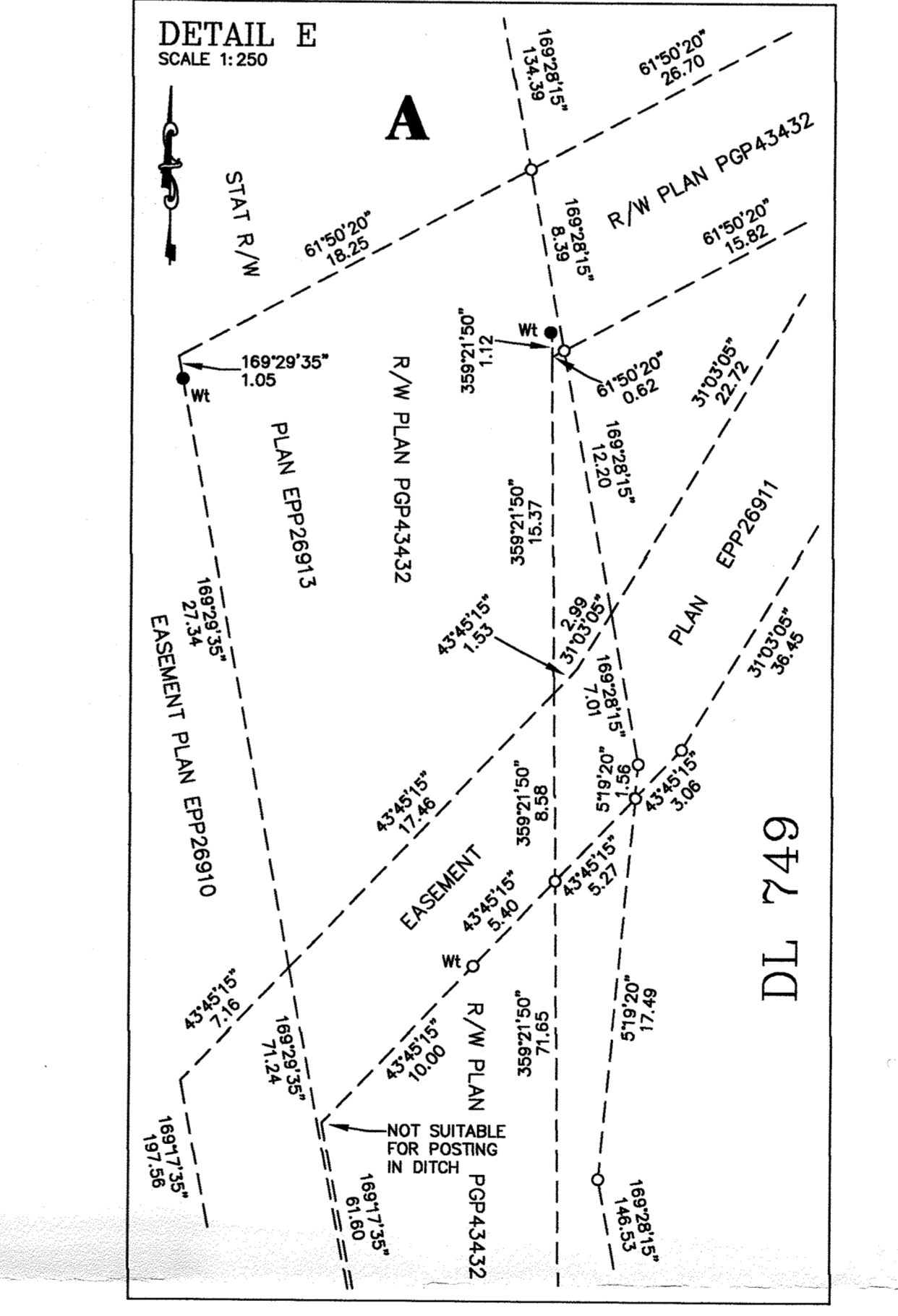
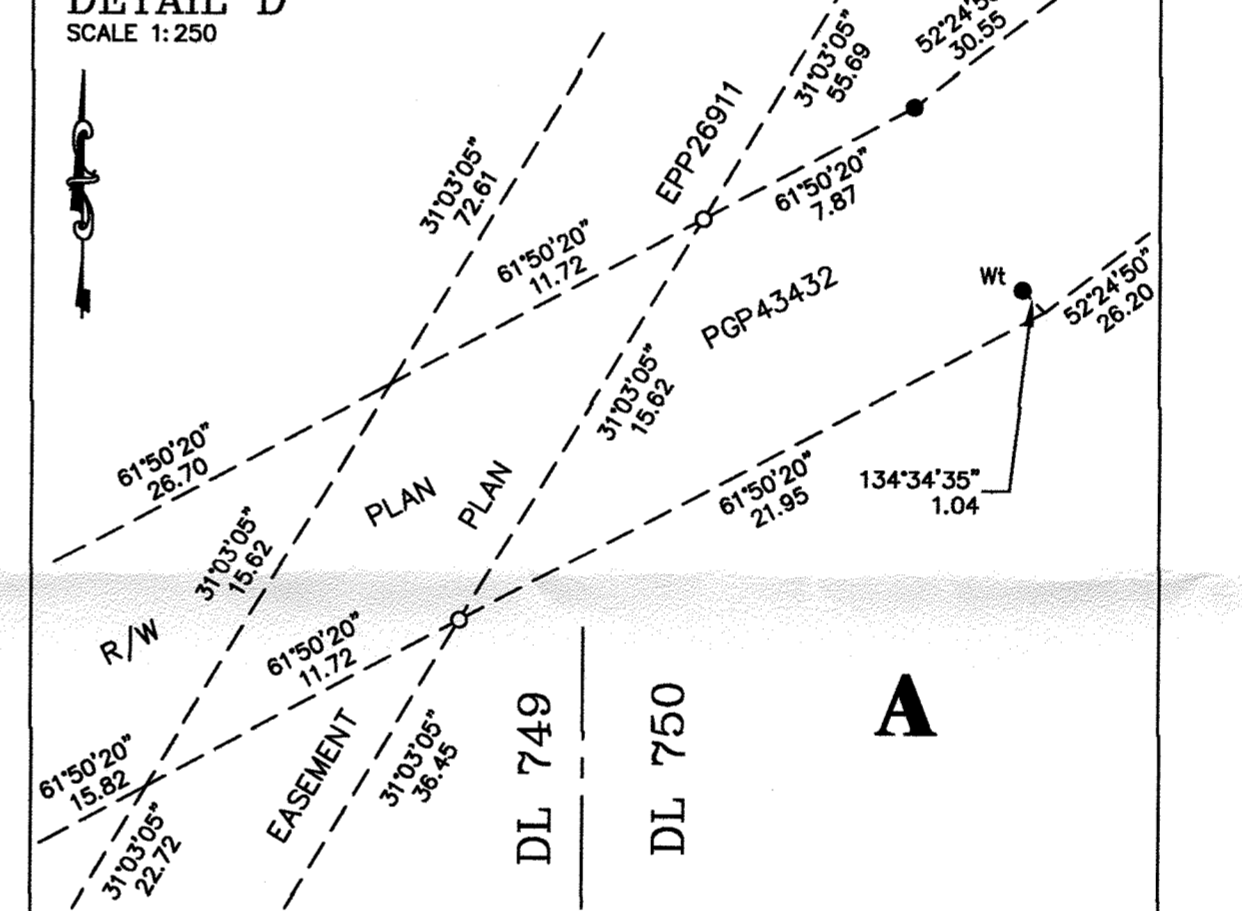
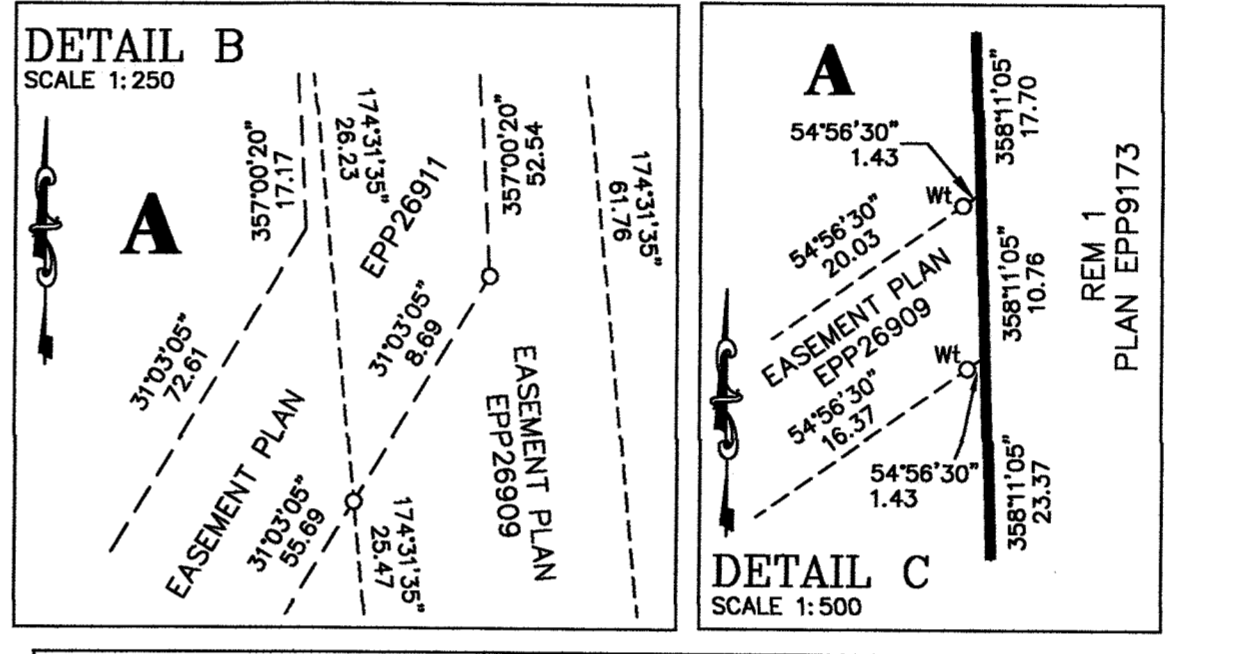
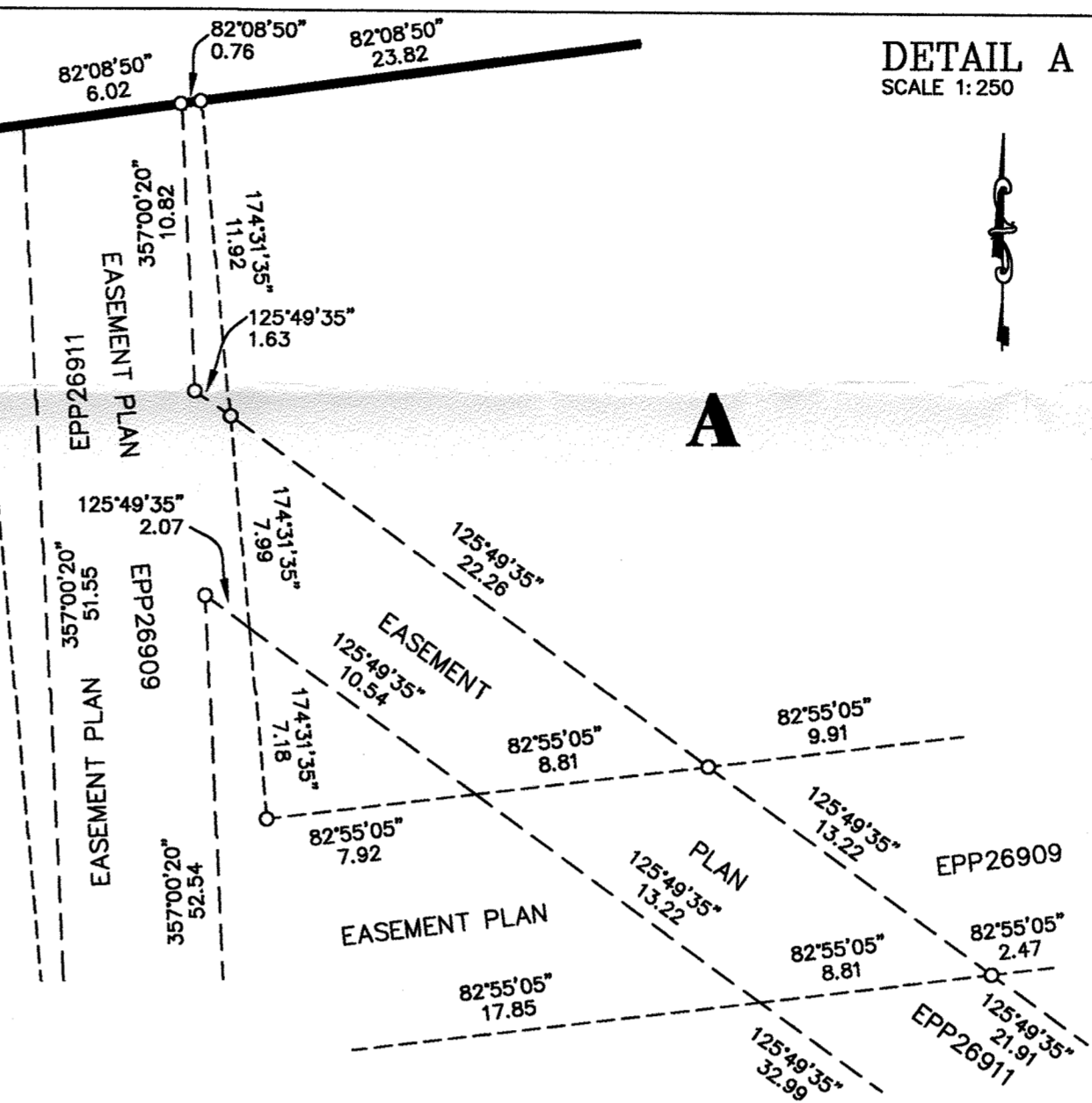
1 : 750

The intended plot size of this plan is 854 mm in width by 1120 mm in height (E size) when plotted at a scale of 1:750. Distances are horizontal ground level distances in metres and decimals thereof unless otherwise denoted.

LEGEND: Grid bearings are derived from observations between control monuments 88H1728 and 88H1758, Integrated Survey Area Number 38, City of Prince George, NAD83(CRS). This plan shows ground level measured distances. Prior to computation of UTM co-ordinates, multiply by the scale factor of 0.99995120.

- Standard Iron Post Found (Type 5)
- Control Monument Found
- Standard Iron Post Placed (Type 5)

Note: This plan shows one or more witness posts which are set along the production of the property boundary unless otherwise noted.



This plan lies within the jurisdiction of the Approving Officer for the City of Prince George.

The field survey represented by this plan was completed by W.D. McIntosh, BCLS on the 7th day of January, 2013.

THIS PLAN LIES WITHIN THE REGIONAL DISTRICT OF FRASER-FORT GEORGE.

January 15, 2013
 FCS Land Services
 Limited Partnership
 Box 1070
 186 Health Centre Road
 Vanderhoof, BC V0J 3A0
 4299.06g
 FB 358, 364, 369