

# EXPLANATORY PLAN OF STATUTORY RIGHT OF WAY OVER PART OF PARCEL Y, DISTRICT LOT 417, CARIBOO DISTRICT, PLAN 1409 EXCEPT PLAN 12977.

## PLAN EPP26813

Pursuant to Section 113 of the Land Title Act.

**BCGS 93G.097**

THIS PLAN LIES WITHIN INTEGRATED SURVEY  
AREA No. 39, PRINCE GEORGE, NAD83 (CSRS)

THE INTENDED PLOT SIZE OF THIS PLAN IS 432mm IN WIDTH BY  
280mm IN HEIGHT (B SIZE) WHEN PLOTTED AT A SCALE OF 1:500

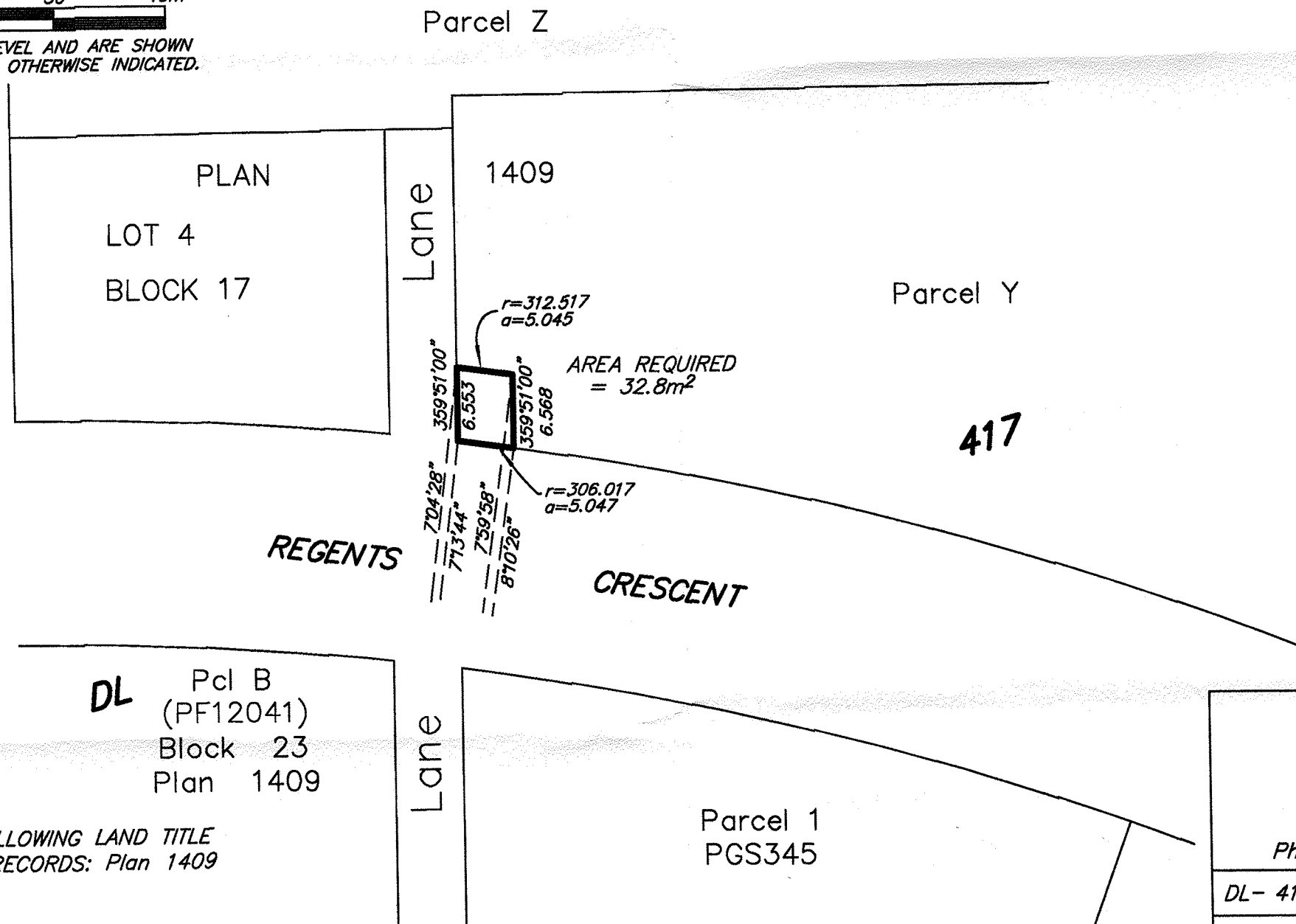


ALL DISTANCES ARE HORIZONTAL GROUND-LEVEL AND ARE SHOWN  
IN METRES AND DECIMALS THEREOF, UNLESS OTHERWISE INDICATED.

BEARINGS ARE ASTRONOMIC AND  
ARE DERIVED FROM PLAN 1409.



QUEENSWAY STREET



DL Pcl B  
(PF12041)  
Block 23  
Plan 1409

THIS PLAN IS BASED ON THE FOLLOWING LAND TITLE  
AND SURVEY AUTHORITY OF BC RECORDS: Plan 1409  
DALE KEOWN, BCLS  
6th DAY OF December, 2012

THIS PLAN LIES WITHIN THE REGIONAL DISTRICT OF FRASER - FORT GEORGE.

**McElhanney**  
McElhanney Associates  
Land Surveying Ltd.  
Prince George, B.C.  
E-mail: pgmals@mcelhanney.com  
Ph: (250) 561-2229 Fax: (250) 563-1941

DL- 417 File No. - 6012-258-RW

DECEMBER 5, 2012

10