

EXPLANATORY PLAN TO ACCOMPANY PARTIAL RELEASE OF PART OF STATUTORY RIGHT OF WAY PLAN BCP31247 WITHIN LOT 6, DISTRICT LOT 2003, CARIBOO DISTRICT, PLAN BCP31246.

PLAN EPP26316

Pursuant to Section 99(1)(e)
of the Land Title Act.

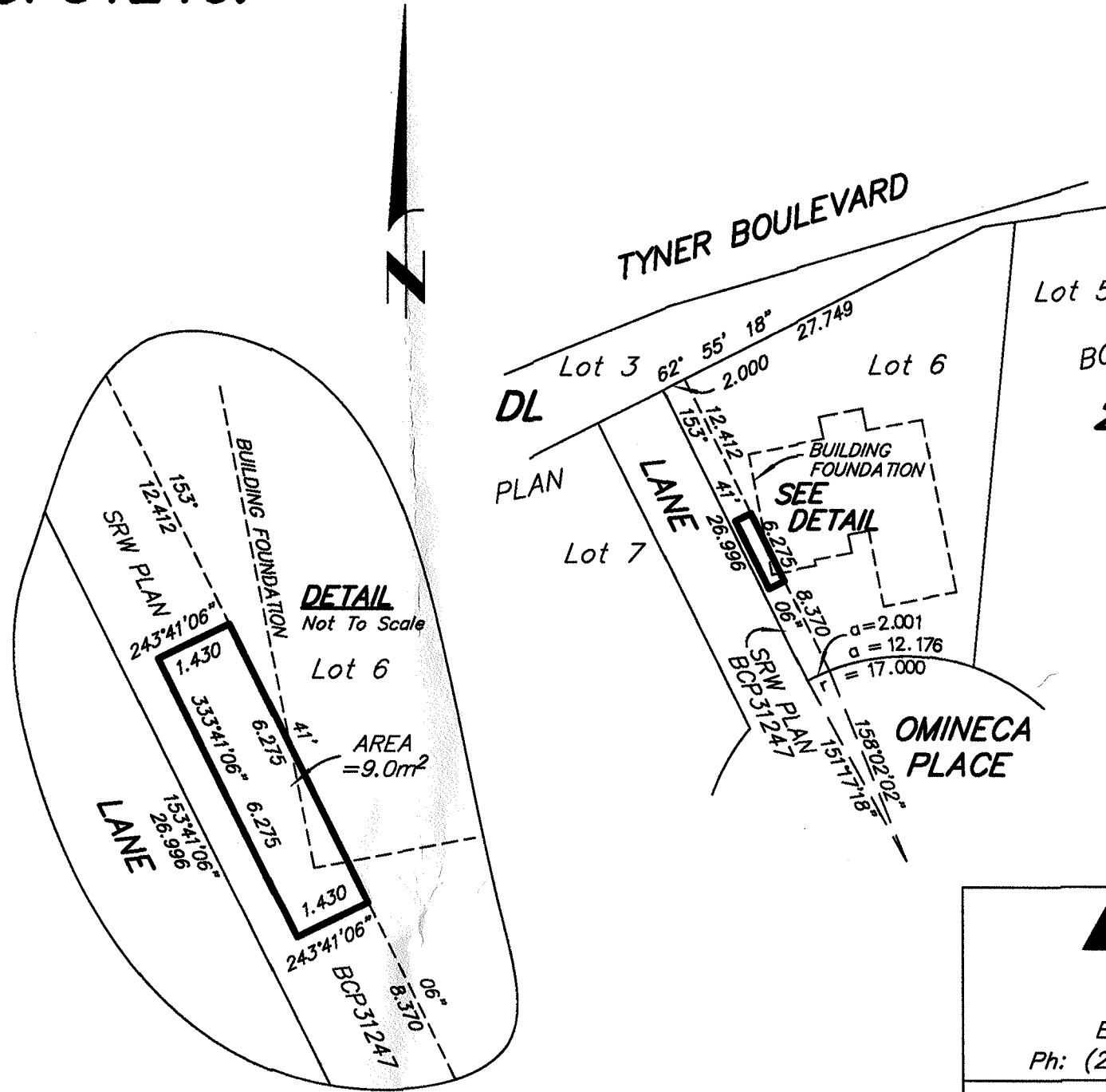
BCGS 93G.087

THE INTENDED PLOT SIZE OF THIS PLAN IS 432mm IN WIDTH BY
280mm IN HEIGHT (B SIZE) WHEN PLOTTED AT A SCALE OF 1:500



THIS PLAN LIES WITHIN INTEGRATED SURVEY
AREA No. 39, PRINCE GEORGE, NAD83 (CSRS)

GRID BEARINGS ARE DERIVED FROM PREVIOUSLY
INTEGRATED PLAN BCP31246



THIS PLAN IS BASED ON THE FOLLOWING LAND TITLE
AND SURVEY AUTHORITY OF BC RECORDS: BCP31246
DALE KEOWN, BCLS
19th DAY OF February, 2013
THIS PLAN LIES WITHIN THE REGIONAL DISTRICT OF FRASER - FORT GEORGE.

McElhanney
McElhanney Associates
Land Surveying Ltd.
Prince George, B.C.
E-mail: pgmals@mcelhanney.com
Ph: (250) 561-2229 Fax: (250) 563-1941

DL- 2003	File No. - 6012-219-RW2
Feb 21, 2013	