

PLAN EPP26188

REFERENCE PLAN OF PART OF REMAINDER
NE1/4 OF NE1/4 OF DISTRICT LOT 1600, CARIBOO DISTRICT
AND PART OF REMAINDER NW1/4 OF NW1/4 OF DISTRICT
LOT 2003, CARIBOO DISTRICT.

PURSUANT TO SECTION 99(1)h) OF THE LAND TITLE ACT.

BCCS 93G.086 & .087

THIS PLAN LIES WITHIN INTEGRATED SURVEY
AREA No. 39, PRINCE GEORGE, NAD83 (CSRS)

THE INTENDED PLOT SIZE OF THIS PLAN IS 864mm IN WIDTH BY
560mm IN HEIGHT (D SIZE) WHEN PLOTTED AT A SCALE OF 1:2500

50m 0 50 100 150m

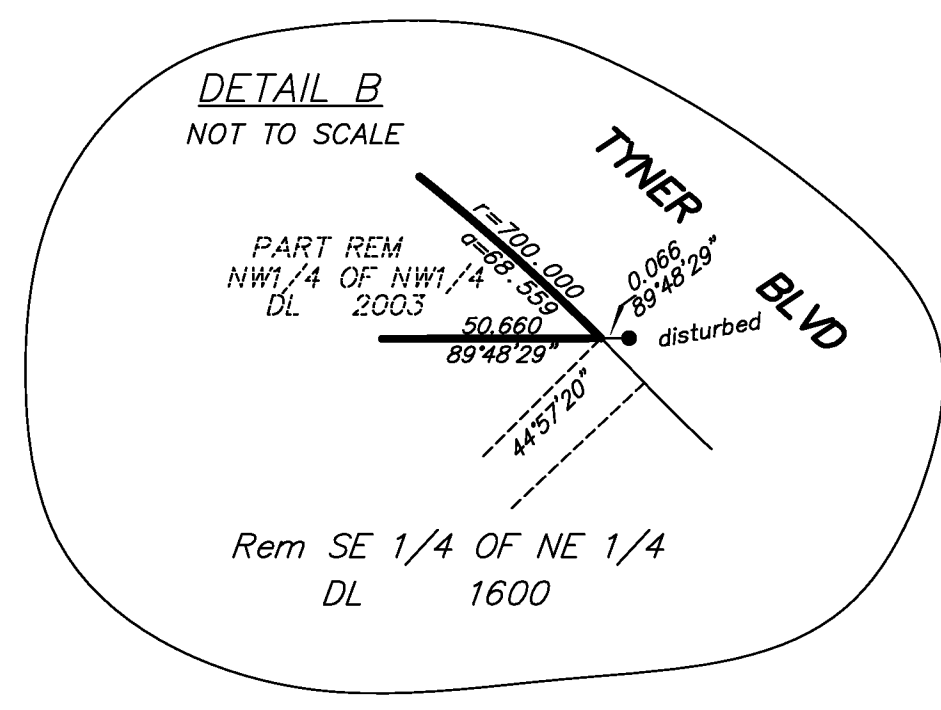
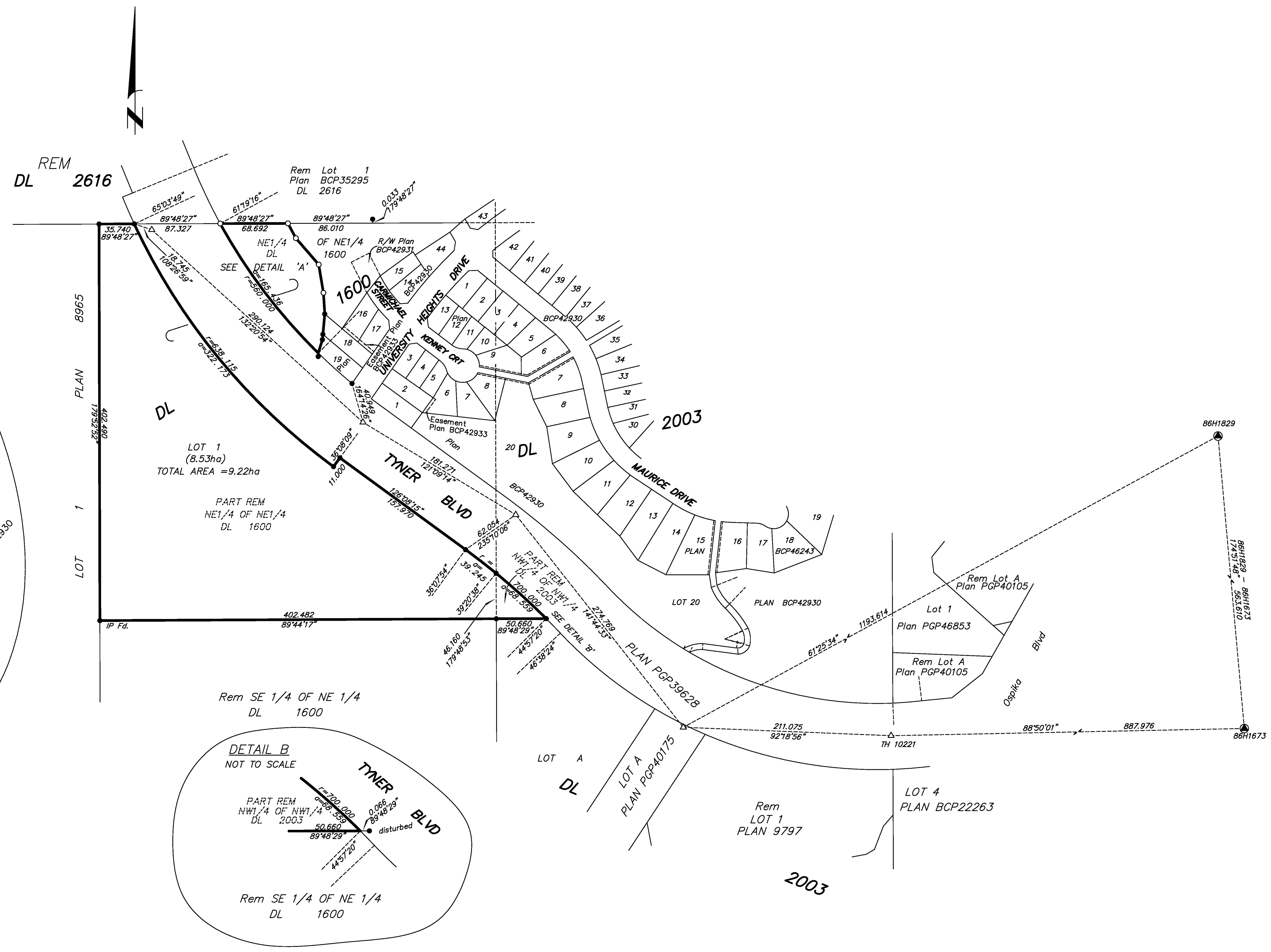
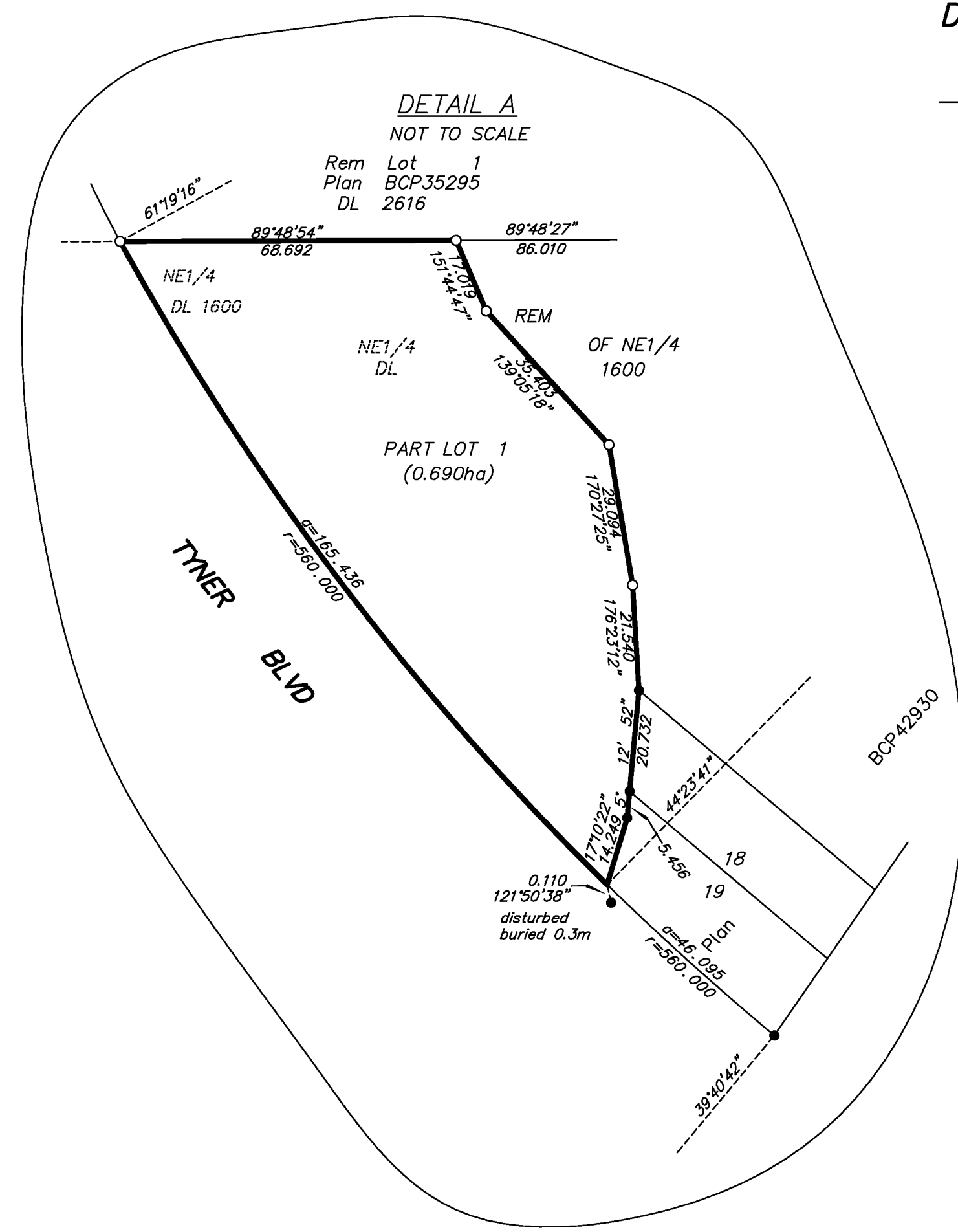
ALL DISTANCES ARE HORIZONTAL GROUND-LEVEL AND ARE SHOWN
IN METRES AND DECIMALS THEREOF, UNLESS OTHERWISE INDICATED.

LEGEND

GRID BEARINGS ARE DERIVED FROM OBSERVATIONS
BETWEEN CONTROL MONUMENTS 86H1673 AND 86H1829

- DENOTES CONTROL MONUMENT FOUND
- DENOTES STANDARD IRON POST FOUND
- DENOTES STANDARD IRON POST PLACED
- △ DENOTES TRAVERSE HUB

THIS PLAN SHOWS HORIZONTAL GROUND-LEVEL DISTANCES UNLESS OTHERWISE
SPECIFIED. TO COMPUTE GRID DISTANCES, MULTIPLY GROUND-LEVEL DISTANCES
BY THE AVERAGE COMBINED FACTOR OF 0.999489 WHICH HAS BEEN DERIVED
FROM GPS STATIC BASE AT TH10221.



THE FIELD SURVEY REPRESENTED BY THIS PLAN
WAS COMPLETED ON THE 16th DAY OF NOVEMBER, 2012.
DALE KEOWN, BCLS

THIS PLAN LIES WITHIN THE REGIONAL DISTRICT OF FRASER - FORT GEORGE.

McElhanney
McElhanney Associates
Land Surveying Ltd.
Prince George, B.C.
E-mail: pgmalls@mcclhanney.com
Ph: (250) 561-2229 Fax: (250) 563-1941

DL - 2003	File No. - 6068-S-3
November 2, 2012	