

REFERENCE PLAN OF CONSOLIDATION OF LOT 1, DISTRICT LOT 4047, CARIBOO DISTRICT, PLAN 26347 AND LOT B, DISTRICT LOT 4047, CARIBOO DISTRICT, PLAN 22563; REFERENCE PLAN OF ROAD DEDICATION OF PART OF PLAN 29887, DISTRICT LOT 4047, CARIBOO DISTRICT.

PURSUANT TO SECTION 100 (1)(b) AND SECTION 107 OF THE LAND TITLE ACT.
BCGS 93G.097

THIS PLAN LIES WITHIN INTEGRATED SURVEY AREA No. 39, PRINCE GEORGE, NAD83 (CSRS)

THE INTENDED PLOT SIZE OF THIS PLAN IS 560mm IN WIDTH BY 432mm IN HEIGHT (C SIZE) WHEN PLOTTED AT A SCALE OF 1:1000.

20m 0 20 40 60 80m

ALL DISTANCES ARE HORIZONTAL GROUND-LEVEL AND ARE SHOWN IN METRES AND DECIMALS THEREOF, UNLESS OTHERWISE INDICATED.

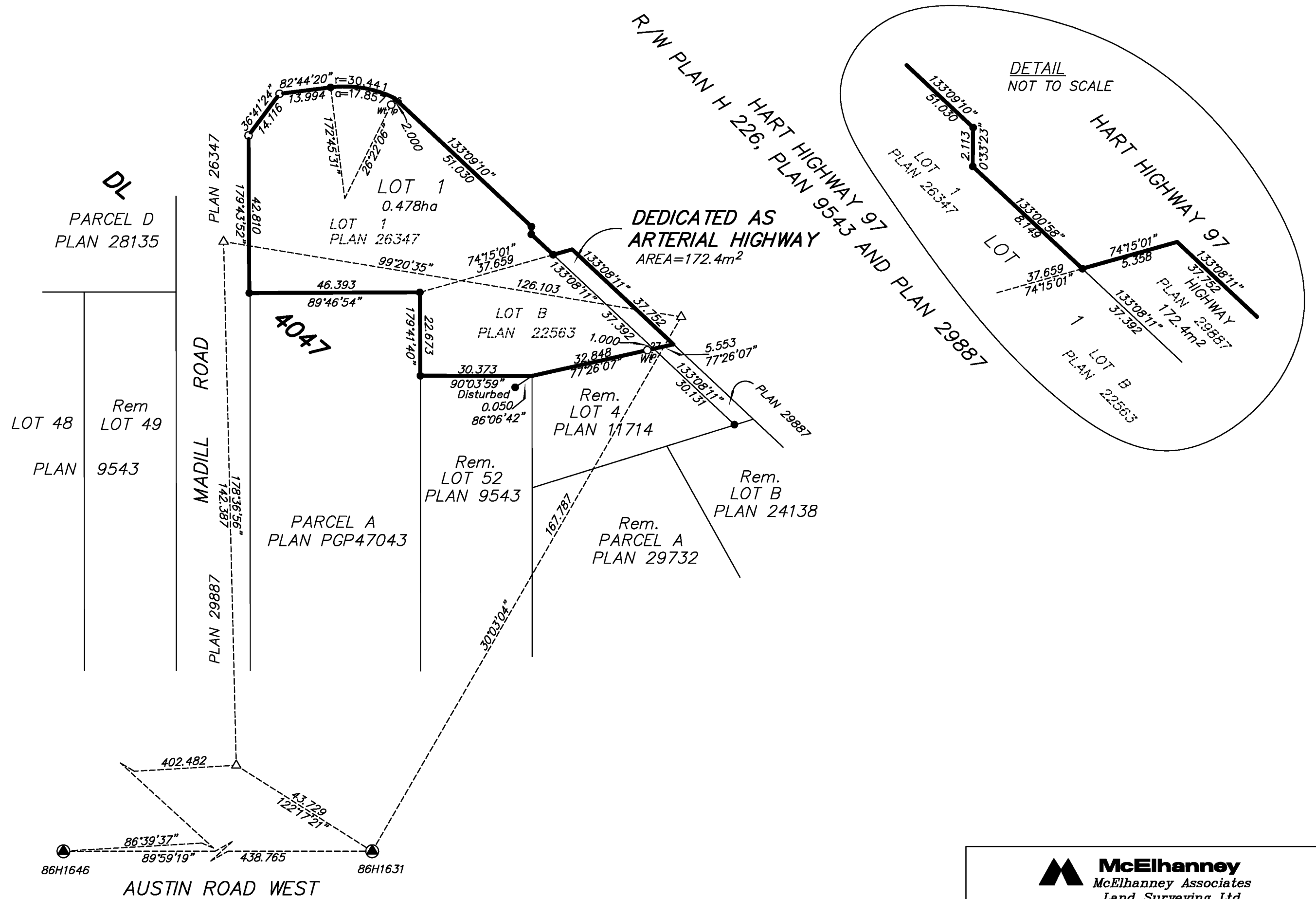
GRID BEARINGS ARE DERIVED FROM OBSERVATIONS BETWEEN CONTROL MONUMENTS 86H1631 AND 86H1646.

LEGEND

- Standard Iron Post Found
- Standard Iron Post Placed
- ⊙ Control Monument Found
- △ Traverse Hub Placed

THIS PLAN SHOWS HORIZONTAL GROUND-LEVEL DISTANCES UNLESS OTHERWISE SPECIFIED. TO COMPUTE GRID DISTANCES, MULTIPLY GROUND-LEVEL DISTANCES BY THE AVERAGE COMBINED FACTOR OF 0.9994874 WHICH HAS BEEN DERIVED FROM 86H1631 AND 86H1646

THIS PLAN SHOWS ONE OR MORE WITNESS POSTS WHICH ARE NOT SET ON THE TRUE CORNER(S).



I AM A BRITISH COLUMBIA LAND SURVEYOR AND CERTIFY THAT I AM AUTHORIZED BY THE MINISTER OF TRANSPORTATION AND INFRASTRUCTURE UNDER SECTION 44.1 OF THE TRANSPORTATION ACT TO SHOW CERTAIN LANDS IDENTIFIED ON THIS PLAN DEDICATED AS ARTERIAL HIGHWAY.

THIS PLAN LIES WITHIN THE JURISDICTION OF THE APPROVING OFFICER FOR THE MINISTRY OF TRANSPORTATION AND INFRASTRUCTURE.

THIS PLAN LIES WITHIN THE JURISDICTION OF THE APPROVING OFFICER FOR THE CITY OF PRINCE GEORGE.

THE FIELD SURVEY REPRESENTED BY THIS PLAN WAS COMPLETED ON THE 5th DAY OF NOVEMBER, 2012.
DALE KEOWN, BCLS

THIS PLAN LIES WITHIN THE REGIONAL DISTRICT OF FRASER - FORT GEORGE.

McElhanney
McElhanney Associates
Land Surveying Ltd.
Prince George, B.C.
E-mail: pgmals@mcelhanney.com
Ph: (250) 561-2229 Fax: (250) 563-1941

DL- 4047	File No. - 6061-CON
April 22, 2013	