

# REFERENCE PLAN OF STATUTORY RIGHT OF WAY OVER PART OF LOT A, PLAN EPP24635 AND PART OF LOT 2, PLAN BCP41328 EXCEPT PLAN EPP24635; ALL IN DISTRICT LOT 747, CARIBOO DISTRICT.

PLAN EPP25907

PURSUANT TO SECTION 113 OF THE LAND TITLE ACT.

BCGS 93G.087

THIS PLAN LIES WITHIN INTEGRATED SURVEY  
AREA No. 39, PRINCE GEORGE, NAD83 (CSRS)

THE INTENDED PLOT SIZE OF THIS PLAN IS 432mm IN WIDTH BY  
560mm IN HEIGHT (C SIZE) WHEN PLOTTED AT A SCALE OF 1:1500

20m 0 20 40 60 100m

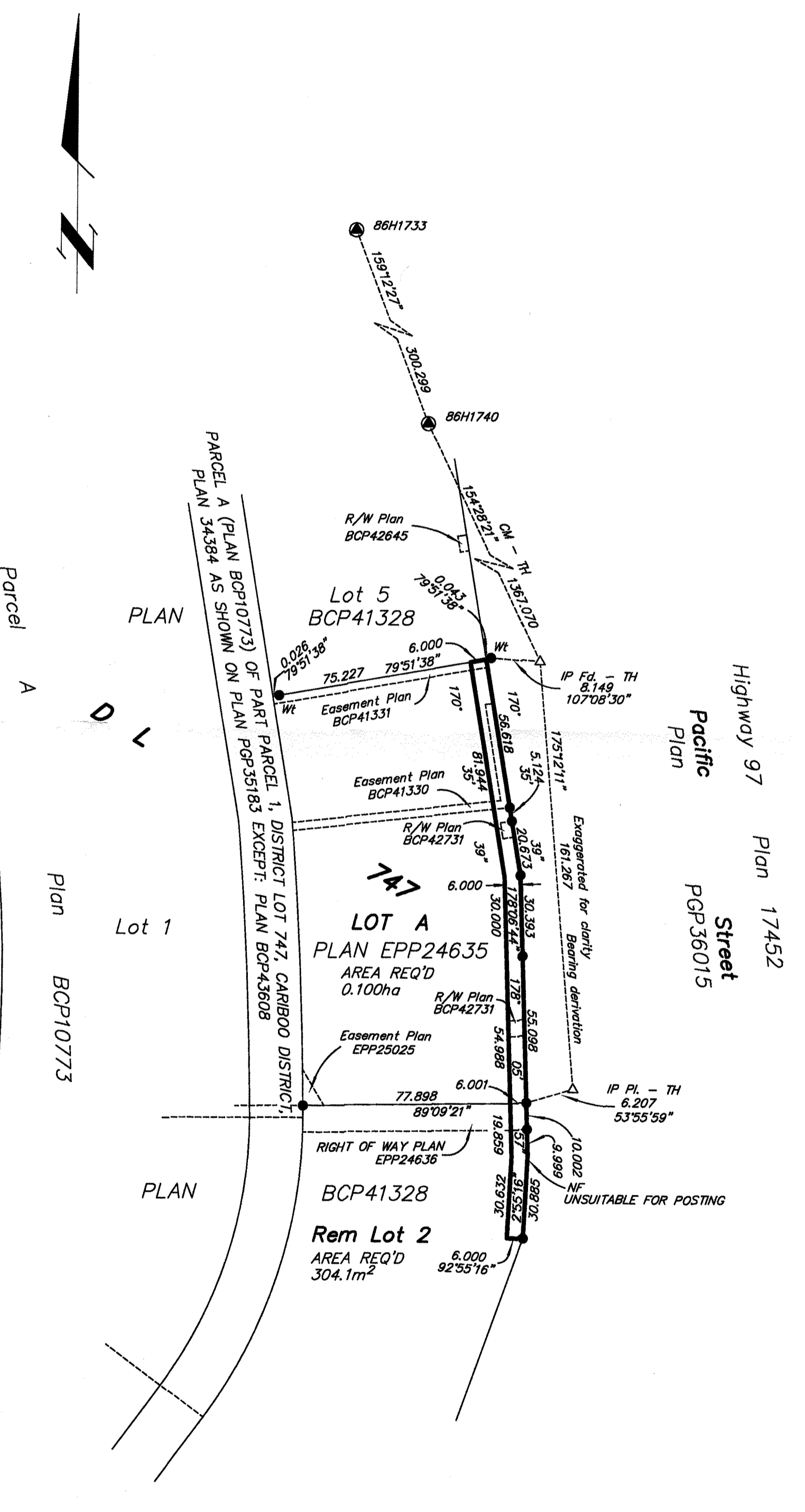
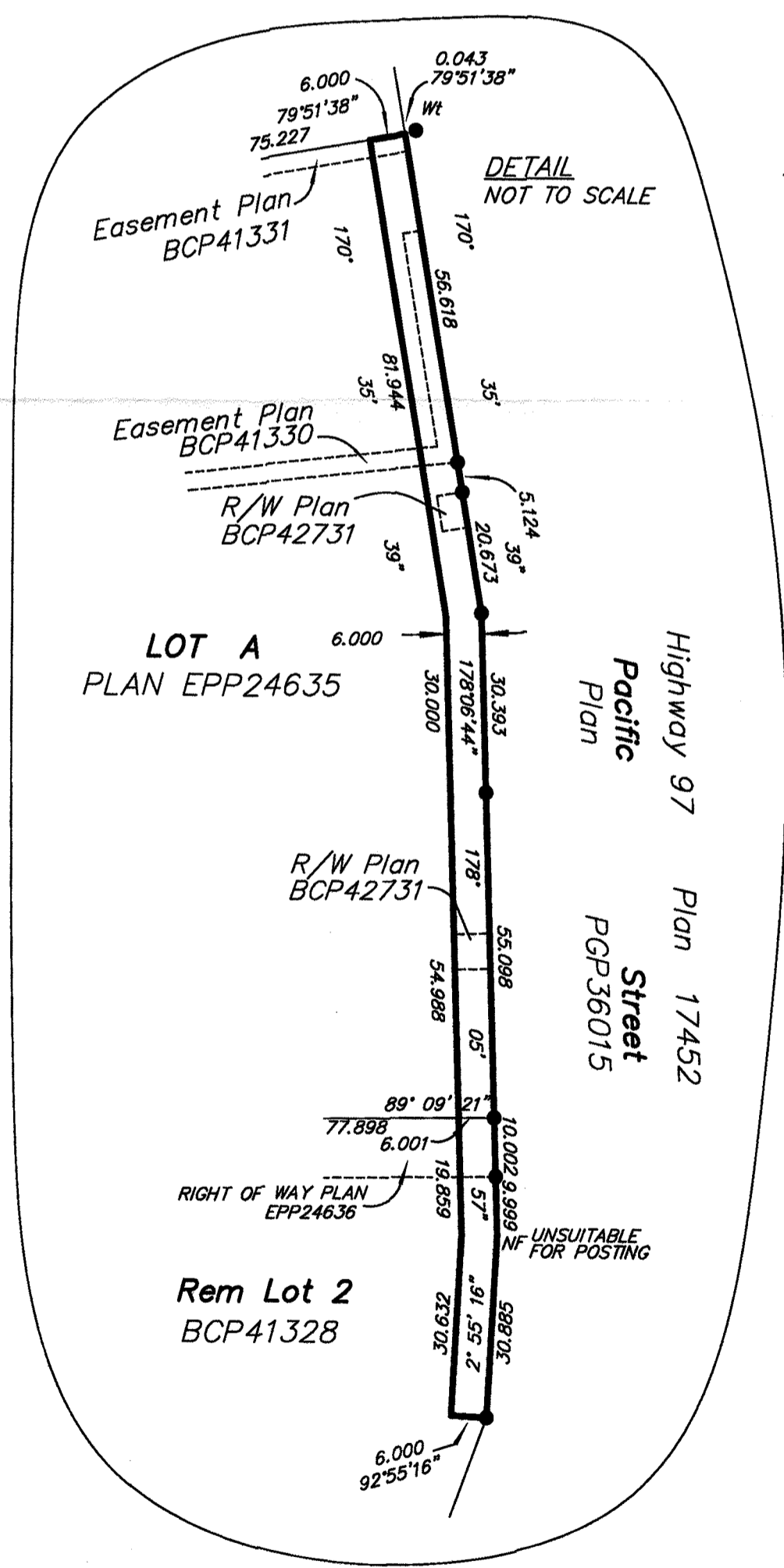
ALL DISTANCES ARE HORIZONTAL GROUND-LEVEL AND ARE SHOWN  
IN METRES AND DECIMALS THEREOF, UNLESS OTHERWISE INDICATED.

**LEGEND**

- Standard Iron Post Found
- ⊙ Control Monument Found
- △ Traverse Hub Placed

THIS PLAN SHOWS ONE OR MORE WITNESS POSTS  
WHICH ARE NOT SET ON THE TRUE CORNER(S).

THIS PLAN SHOWS HORIZONTAL GROUND-LEVEL DISTANCES UNLESS OTHERWISE  
SPECIFIED. TO COMPUTE GRID DISTANCES, MULTIPLY GROUND-LEVEL DISTANCES  
BY THE AVERAGE COMBINED FACTOR OF 0.9995130 WHICH HAS BEEN DERIVED  
FROM 86H1740 AND 86H1733.



BOOK OF REFERENCE	
DESCRIPTION	AREA
LOT A, PLAN EPP24635	0.100ha
LOT 2, PLAN BCP41328	304.1m <sup>2</sup>

**McElhanney**  
McElhanney Associates  
Land Surveying Ltd.  
Prince George, B.C.  
E-mail: pgmats@mcelhanney.com  
Ph: (250) 561-2229 Fax: (250) 563-1941

DL- 747	File No. - 6078-RW
November 9, 2012	

THE FIELD SURVEY REPRESENTED BY THIS PLAN  
WAS COMPLETED ON THE 9th DAY OF NOVEMBER, 2012.  
DALE KEOWN, BCLS

THIS PLAN LIES WITHIN THE REGIONAL DISTRICT OF FRASER - FORT GEORGE.