

**PLAN OF STATUTORY RIGHT OF WAY WITHIN
LOT 1, DISTRICT LOT 750, PLAN 20076;
PARCEL A(109644M), OF THE SOUTH EAST 1/4
OF DISTRICT LOT 748, AND LOT 2, DISTRICT
LOT 748, PLAN 17653, ALL IN CARIBOO DISTRICT.**

PLAN EPP25648

PURSUANT TO SECTION 11.3 OF THE LAND TITLE ACT.

BCGS 93G.087

THIS PLAN LIES WITHIN INTEGRATED SURVEY
AREA No. 39, PRINCE GEORGE, 1A063 (CSRS)

THE INTENDED PLOT SIZE OF THIS PLAN IS 118mm IN WIDTH BY
85mm IN HEIGHT (E SIZE) WHEN PLOTTED AT A SCALE OF 1:2000

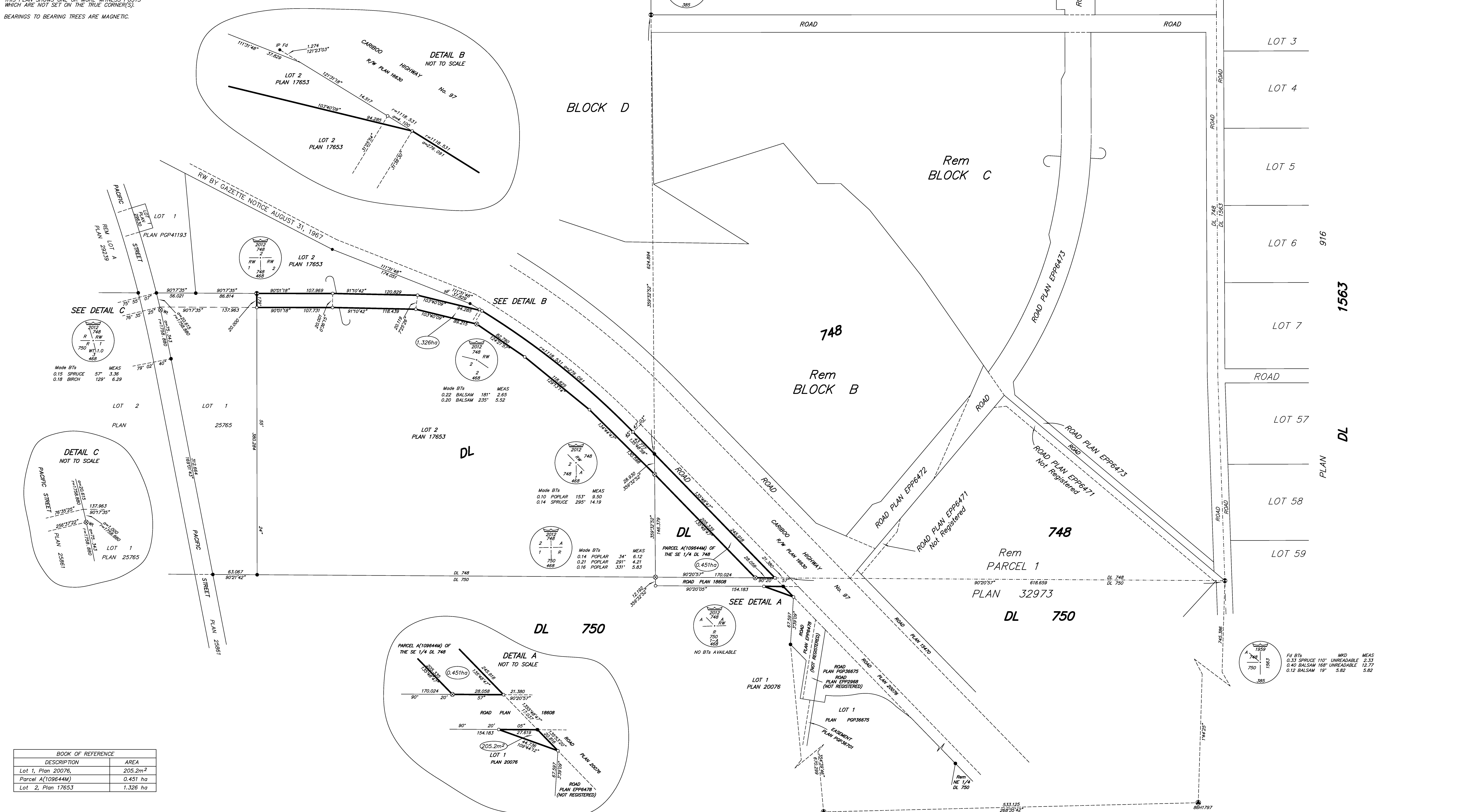
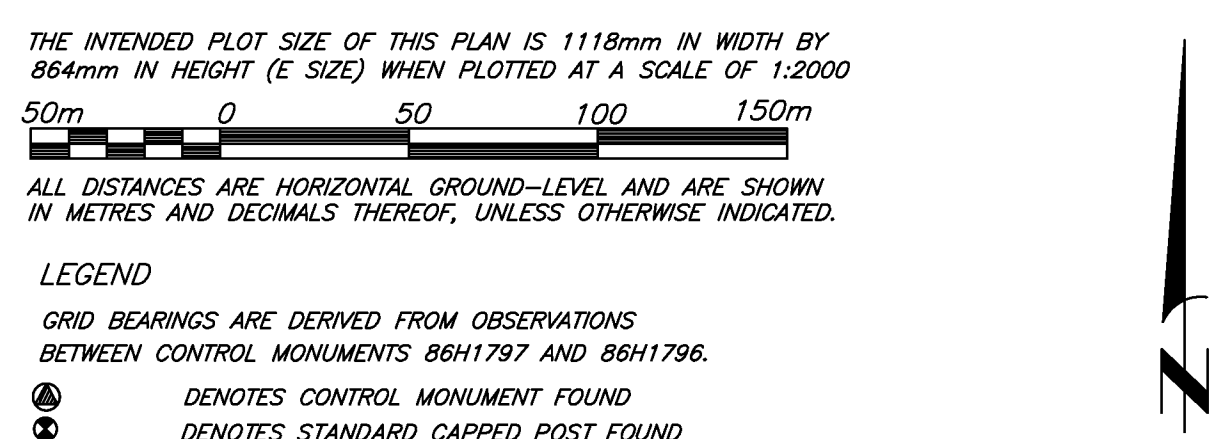
ALL DISTANCES ARE HORIZONTAL GROUND-LEVEL AND ARE SHOWN
IN METRES AND DECIMALS THEREOF, UNLESS OTHERWISE INDICATED.

- LEGEND**
- GRID BEARINGS ARE DERIVED FROM OBSERVATIONS
BETWEEN CONTROL MONUMENTS 86H1792 AND 86H1796.
 - ⊙ DENOTES CONTROL MONUMENT FOUND
 - ⊕ DENOTES STANDARD CAPPED POST FOUND
 - ⊗ DENOTES STANDARD CAPPED POST PLACED
 - ⊙ DENOTES STANDARD IRON POST FOUND
 - DENOTES STANDARD IRON POST PLACED

THIS PLAN SHOWS HORIZONTAL GROUND-LEVEL DISTANCES UNLESS OTHERWISE
SPECIFIED, TO COMPUTE GRID DISTANCES, MULTIPLY GROUND-LEVEL DISTANCES
BY THE AVERAGE COMBINED FACTOR OF 0.9995026 WHICH HAS BEEN DERIVED
FROM 86H1796 AND 86H1792.

THIS PLAN SHOWS ONE OR MORE WITNESS POSTS
WHICH ARE NOT SET ON THE TRUE CORNER(S).

BEARINGS TO BEARING TREES ARE MAGNETIC.



BOOK OF REFERENCE	
DESCRIPTION	AREA
Lot 1, Plan 20076	205.2m ²
Parcel A(109644M)	0.451 ha
Lot 2, Plan 17653	1.326 ha

THE FIELD SURVEY REPRESENTED BY THIS PLAN
WAS COMPLETED ON THE 25th DAY OF OCTOBER, 2012.
DALE KEOWN, BCLS

THIS PLAN LIES WITHIN THE REGIONAL DISTRICT OF FRASER - FORT GEORGE.

McElhenny
McElhenny Associates
Land Surveying Ltd.
Prince George, B.C.
E-mail: pgmats@mcelhenny.com
Ph: (250) 561-2229 Fax: (250) 563-1841

DL - 748 File No. - 605BRW

REV 1