

**PLAN OF STATUTORY RIGHT OF WAY WITHIN  
LOT 4, DISTRICT LOT 1605, CARIBOO DISTRICT,  
PLAN 30863 EXCEPT PLANS PGP35796,  
PGP37167, PGP38357 AND PGP46571.**

**PLAN EPP25573**

PURSUANT TO SECTION 113 OF THE LAND TITLE ACT.

BCGS 93G.087

THIS PLAN LIES WITHIN INTEGRATED SURVEY  
AREA No. 39, PRINCE GEORGE, NAD83 (CSRS)

THE INTENDED PLOT SIZE OF THIS PLAN IS 432mm IN WIDTH BY  
560mm IN HEIGHT (C SIZE) WHEN PLOTTED AT A SCALE OF 1:2000



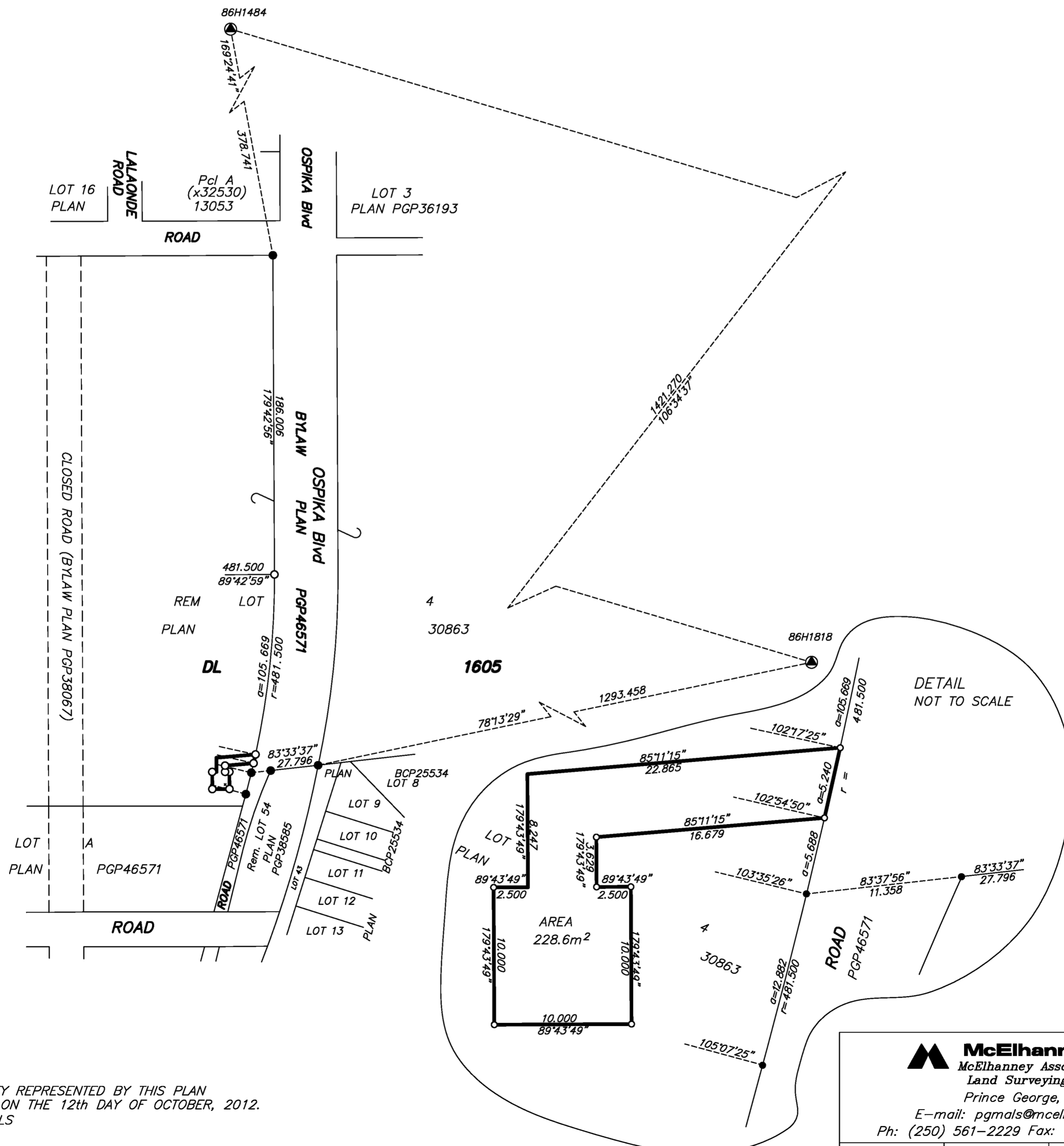
ALL DISTANCES ARE HORIZONTAL GROUND-LEVEL AND ARE SHOWN  
IN METRES AND DECIMALS THEREOF, UNLESS OTHERWISE INDICATED.

GRID BEARINGS ARE DERIVED FROM OBSERVATIONS  
BETWEEN CONTROL MONUMENTS 86H1818 AND 86H1484.

**LEGEND**

- Standard Iron Post Found
- Standard Iron Post Placed
- ⊙ Control Monument Found

THIS PLAN SHOWS HORIZONTAL GROUND-LEVEL DISTANCES UNLESS OTHERWISE  
SPECIFIED. TO COMPUTE GRID DISTANCES, MULTIPLY GROUND-LEVEL DISTANCES  
BY THE AVERAGE COMBINED FACTOR OF 0.999504 WHICH HAS BEEN DERIVED  
FROM 86H1818 AND 86H1484.



THE FIELD SURVEY REPRESENTED BY THIS PLAN  
WAS COMPLETED ON THE 12th DAY OF OCTOBER, 2012.  
DALE KEOWN, BCLS

**McElhanney**  
McElhanney Associates  
Land Surveying Ltd.  
Prince George, B.C.  
E-mail: pgmals@mcelhanney.com  
Ph: (250) 561-2229 Fax: (250) 563-1941

DL - 1605	File No. - 6062-RW
-----------	--------------------

THIS PLAN LIES WITHIN THE REGIONAL DISTRICT OF FRASER - FORT GEORGE.