

**REFERENCE PLAN OF CONSOLIDATION OF LOT A,
DISTRICT LOT 2508, CARIBOO DISTRICT, PLAN EPP25203,
PARCEL A (77727M) OF LOT 3, BLOCK 10, DISTRICT LOT 2508
AND EAST 1/2 OF LOT 2, BLOCK 10, DISTRICT LOT 2508,
CARIBOO DISTRICT, PLAN 837.**

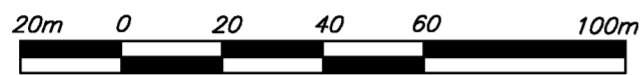
PLAN EPP25204

PURSUANT TO SECTION 100(1)(b) OF THE LAND TITLE ACT.

BCGS 93G.096

THIS PLAN LIES WITHIN INTEGRATED SURVEY
AREA No. 39, PRINCE GEORGE, NAD83 (CSRS)

THE INTENDED PLOT SIZE OF THIS PLAN IS 432mm IN WIDTH BY
560mm IN HEIGHT (C SIZE) WHEN PLOTTED AT A SCALE OF 1:1500

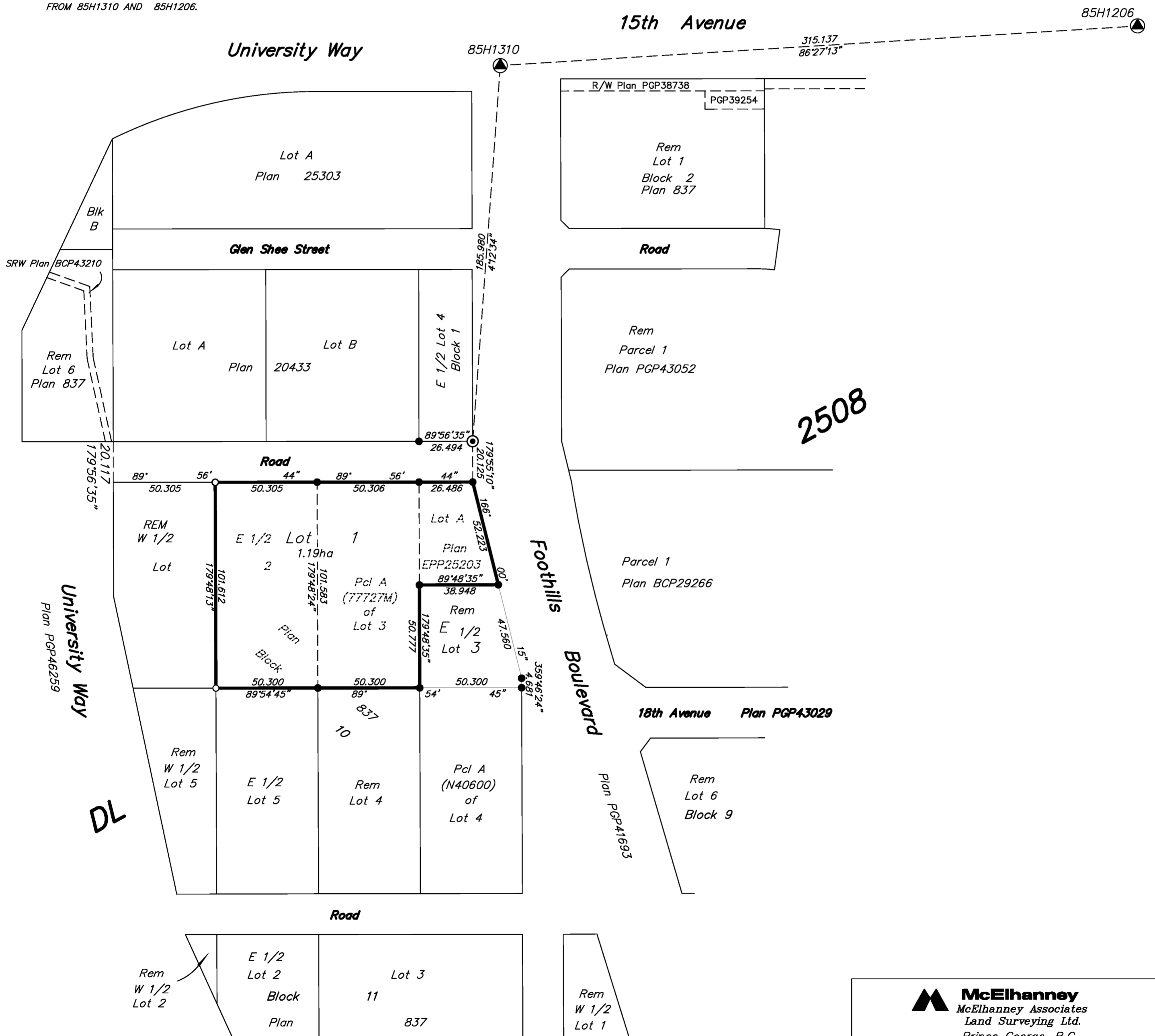


LEGEND

GRID BEARINGS ARE DERIVED FROM OBSERVATIONS
BETWEEN CONTROL MONUMENTS 85H1310 AND 85H1206.

- DENOTES CONTROL MONUMENT FOUND
- DENOTES STANDARD IRON POST FOUND
- DENOTES CONCRETE POST FOUND

THIS PLAN SHOWS HORIZONTAL GROUND-LEVEL DISTANCES UNLESS OTHERWISE
SPECIFIED. TO COMPUTE GRID DISTANCES, MULTIPLY GROUND-LEVEL DISTANCES
BY THE AVERAGE COMBINED FACTOR OF 0.99950925 WHICH HAS BEEN DERIVED
FROM 85H1310 AND 85H1206.



Rem W 1/2 Lot 2	E 1/2 Lot 2	Lot 3
	Block	11
	Plan	837

Rem
W 1/2
Lot 1

THE FIELD SURVEY REPRESENTED BY THIS PLAN
WAS COMPLETED ON THE 16th DAY OF OCTOBER, 2012.
DALE KEOWN, BCLS

THIS PLAN LIES WITHIN THE REGIONAL DISTRICT OF FRASER - FORT GEORGE.

McElhanney
McElhanney Associates
Land Surveying Ltd.
Prince George, B.C.
E-mail: pgmals@mcelhanney.com
Ph: (250) 561-2229 Fax: (250) 563-1941

DL- 2508	File No. - 6043-CON
----------	---------------------