

**PLAN OF SUBDIVISION OF PART OF THE EAST 1/2 OF LOT 3,  
BLOCK 10, DISTRICT LOT 2508, CARIBOO DISTRICT,  
PLAN 837, EXCEPT PART IN PLAN PGP41693.**

PURSUANT TO SECTION 67 OF THE LAND TITLE ACT.  
BCGS 93G.096

THIS PLAN LIES WITHIN INTEGRATED SURVEY  
AREA No. 39, PRINCE GEORGE, NAD83 (CSRS)

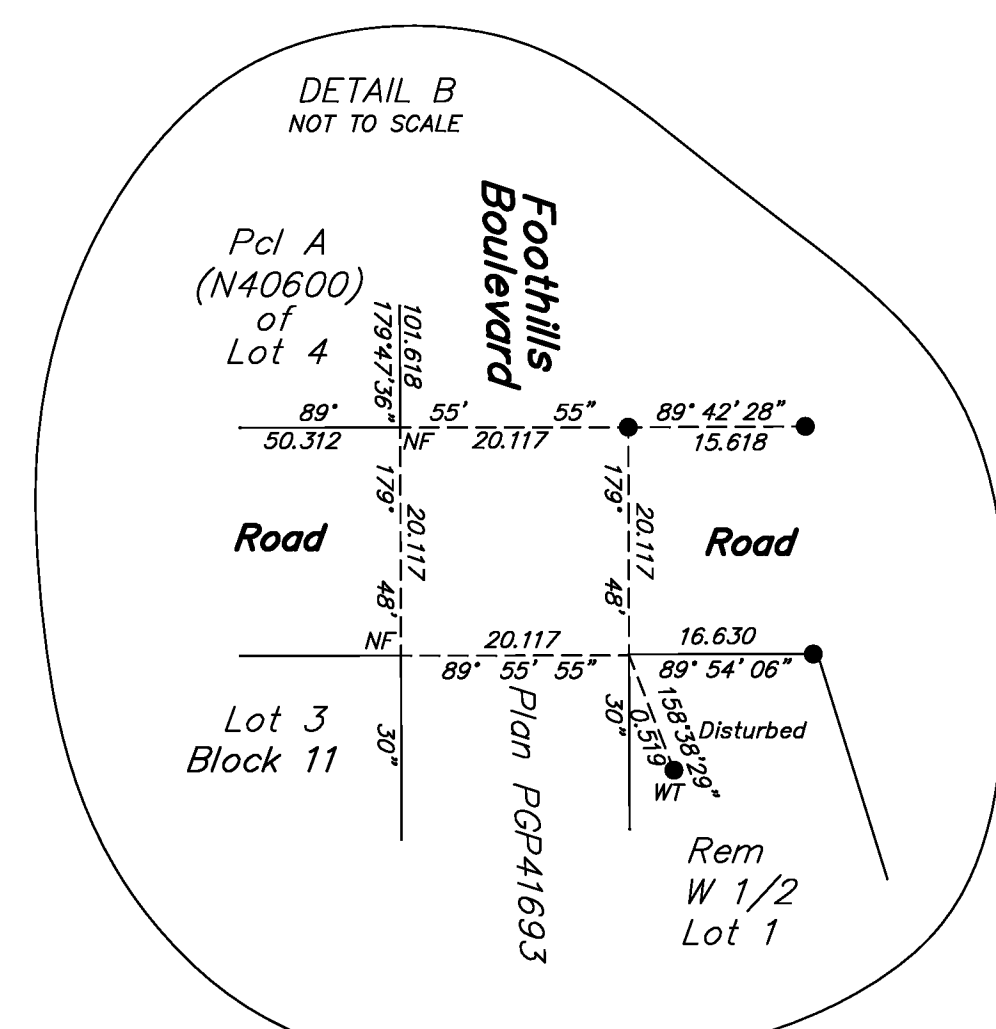
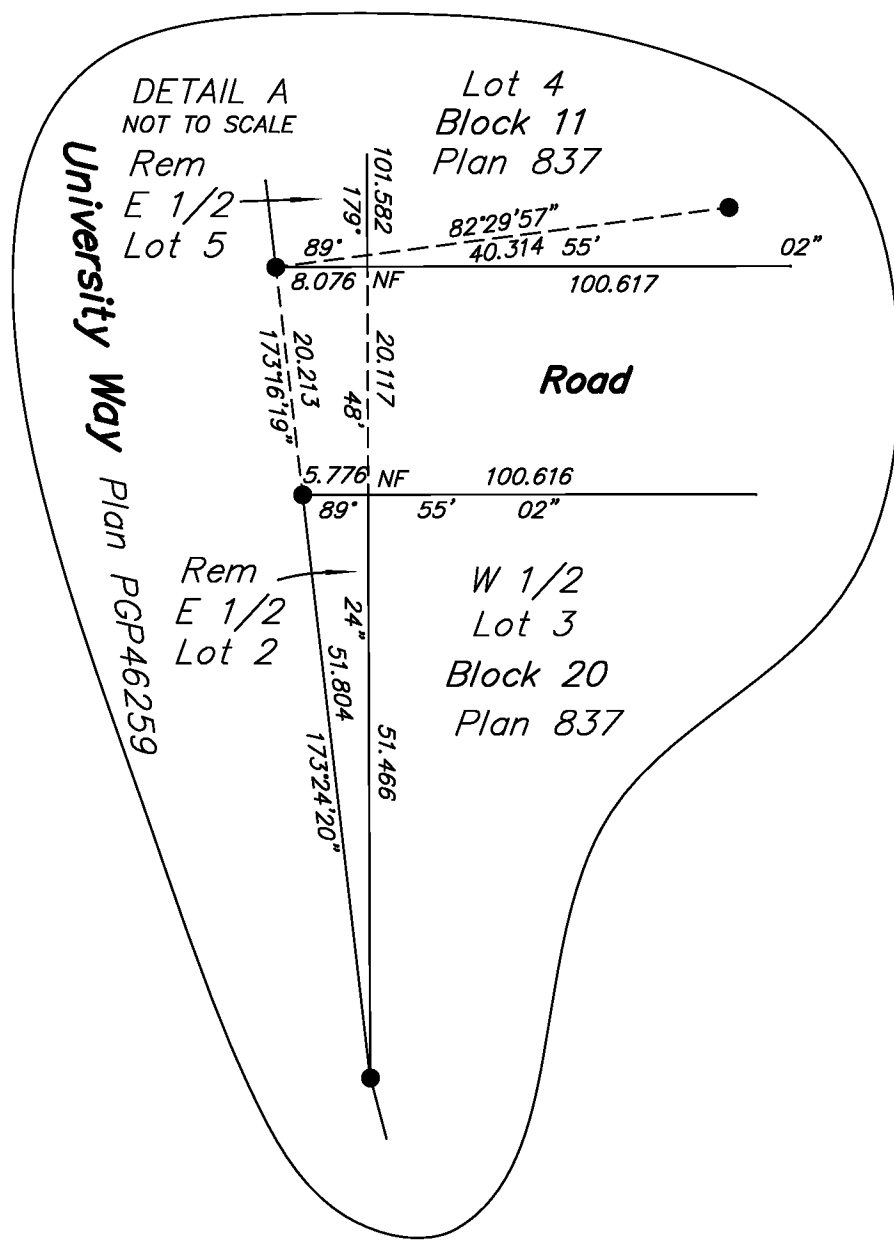
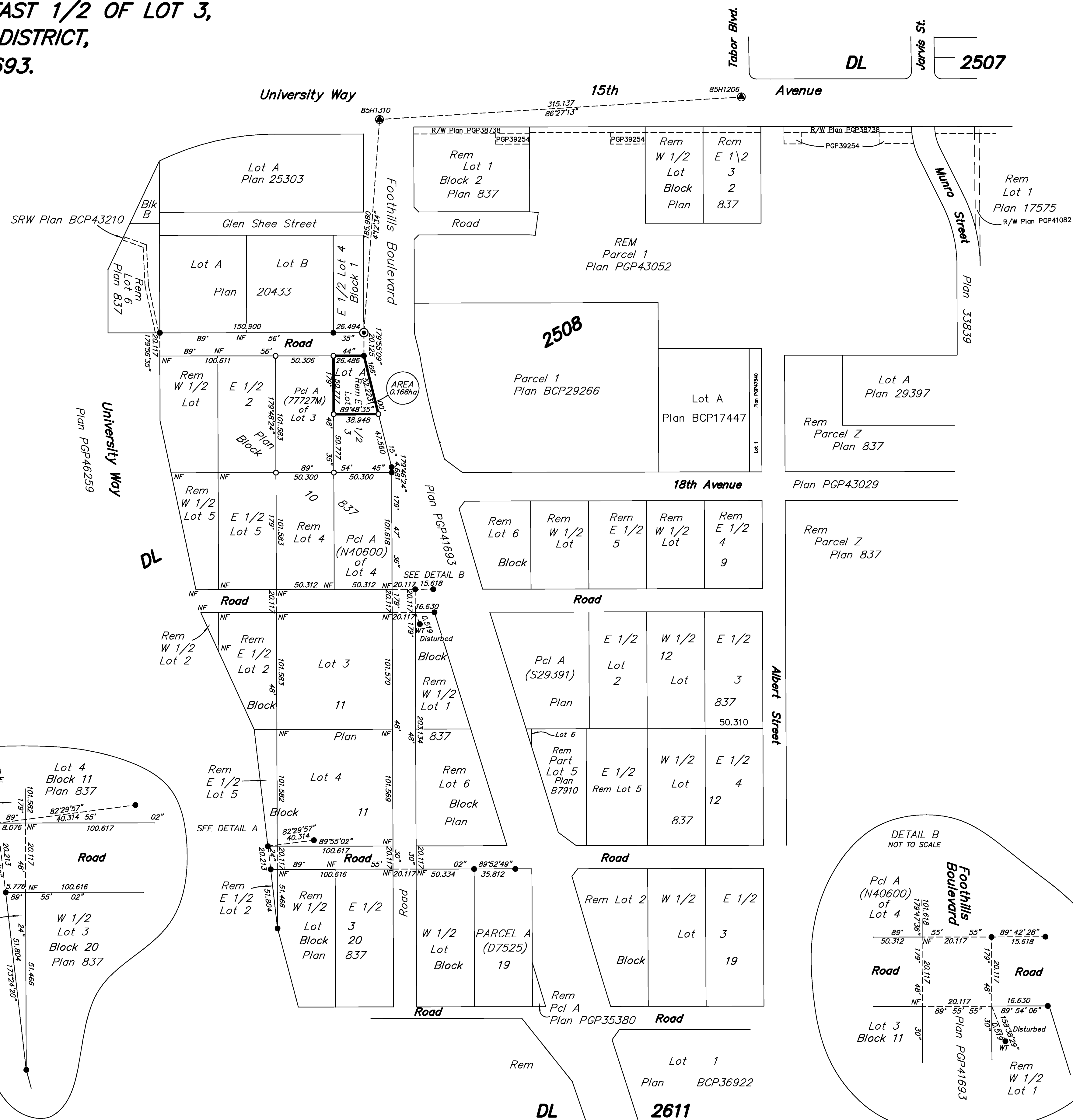
THE INTENDED PLOT SIZE OF THIS PLAN IS 864mm IN WIDTH BY  
560mm IN HEIGHT (D SIZE) WHEN PLOTTED AT A SCALE OF 1:2000

50m 0 50 100 150m

LEGEND

- DENOTES CONTROL MONUMENT FOUND
- DENOTES STANDARD IRON POST FOUND
- DENOTES STANDARD IRON POST PLACED
- DENOTES CONCRETE POST FOUND

THIS PLAN SHOWS HORIZONTAL GROUND-LEVEL DISTANCES UNLESS OTHERWISE  
SPECIFIED. TO COMPUTE GRID DISTANCES, MULTIPLY GROUND-LEVEL DISTANCES  
BY THE AVERAGE COMBINED FACTOR OF 0.99950925 WHICH HAS BEEN DERIVED  
FROM 85H1310 AND 85H1206.



THIS PLAN IS PREPARED AS THE OFFICIAL PLAN OF THE LANDS  
SHOWN HEREON FOR THE SURVEYOR GENERAL

A COVENANT IN THE NAME OF THE CITY OF PRINCE GEORGE  
PURSUANT TO SECTION 219 IS A CONDITION OF APPROVAL  
FOR SUBDIVISION.

THIS PLAN LIES WITHIN THE JURISDICTION OF THE  
APPROVING OFFICER FOR THE CITY OF PRINCE GEORGE.  
CPG File: SD100362

THE FIELD SURVEY REPRESENTED BY THIS PLAN  
WAS COMPLETED ON THE 16th DAY OF OCTOBER, 2012.  
DALE KEOWN, BCLS

THIS PLAN LIES WITHIN THE REGIONAL DISTRICT OF FRASER - FORT GEORGE.

**McElhanney**  
McElhanney Associates  
Land Surveying Ltd.  
Prince George, B.C.

E-mail: pgmalls@mcElhanney.com  
Ph: (250) 561-2229 Fax: (250) 563-1941

DL - 2508 File No. - 6043-S