

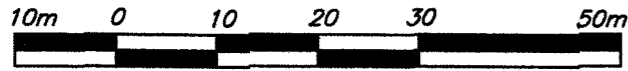
**REFERENCE PLAN OF EASEMENT OVER PART OF  
LOT A, DISTRICT LOT 747,  
CARIBOO DISTRICT, PLAN EPP24635.**

**PLAN EPP25025**

PURSUANT TO SECTION 99(1)(e) OF THE LAND TITLE ACT.  
BCGS 93G.087

THIS PLAN LIES WITHIN INTEGRATED SURVEY  
AREA No. 39, PRINCE GEORGE, NAD83 (CSRS)

THE INTENDED PLOT SIZE OF THIS PLAN IS 432mm IN WIDTH BY  
560mm IN HEIGHT (C SIZE) WHEN PLOTTED AT A SCALE OF 1:750

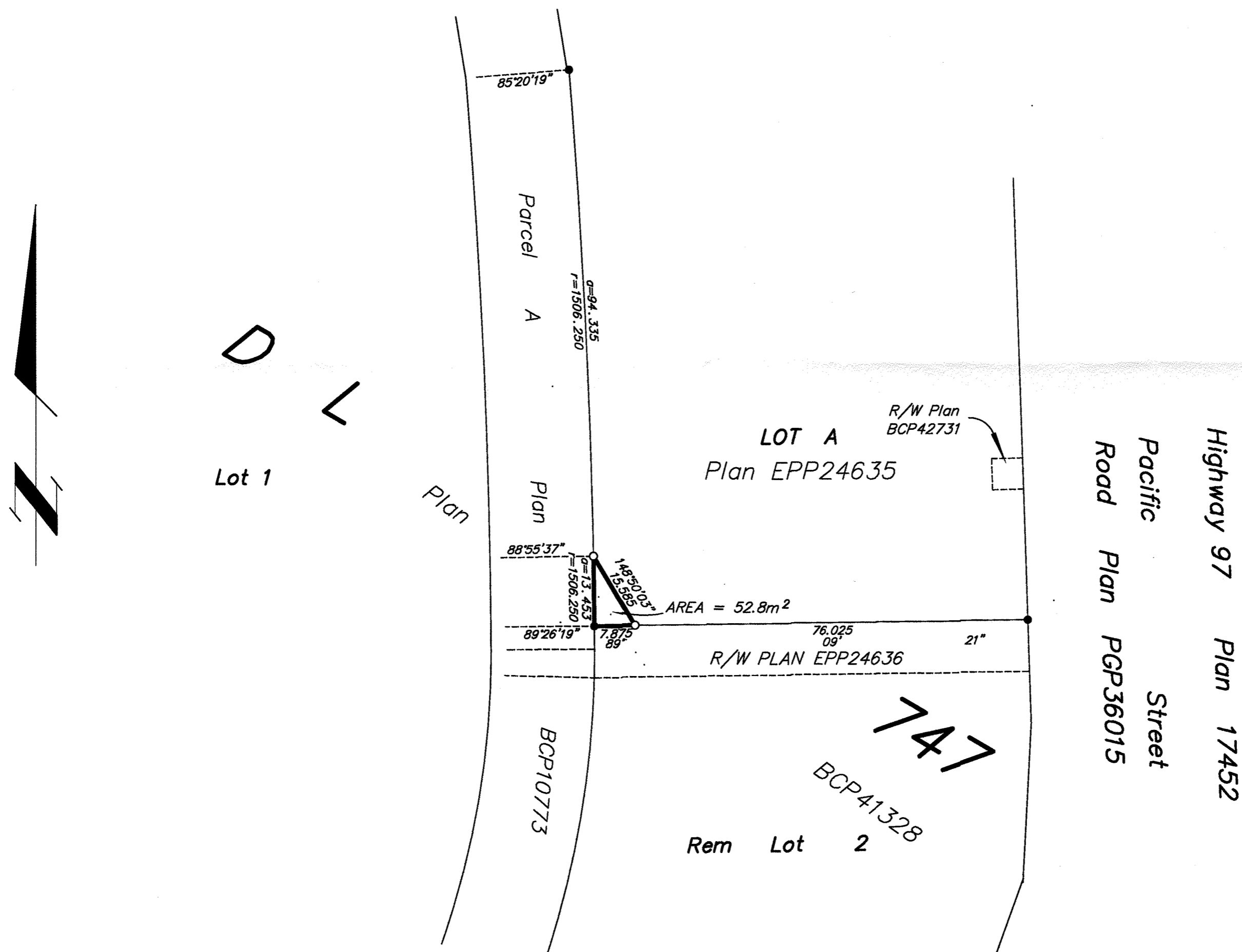


ALL DISTANCES ARE HORIZONTAL GROUND-LEVEL AND ARE SHOWN  
IN METRES AND DECIMALS THEREOF, UNLESS OTHERWISE INDICATED.

GRID BEARINGS ARE DERIVED FROM PREVIOUSLY  
INTEGRATED PLAN EPP24635

**LEGEND**

- Standard Iron Post Found
- Standard Iron Post Placed



THE FIELD SURVEY REPRESENTED BY THIS PLAN  
WAS COMPLETED ON THE 4th DAY OF OCTOBER, 2012.  
DALE KEOWN, BCLS

**McElhanney**  
McElhanney Associates  
Land Surveying Ltd.  
Prince George, B.C.  
E-mail: pgmats@mcelhanney.com  
Ph: (250) 561-2229 Fax: (250) 563-1941

DL-747 File No. - 6055-E

THIS PLAN LIES WITHIN THE REGIONAL DISTRICT OF FRASER - FORT GEORGE.