

PLAN OF STATUTORY RIGHT OF WAY WITHIN PART OF LOT 2, DISTRICT LOT 747, CARIBOO DISTRICT, PLAN 41328 EXCEPT PLAN EPP24635.

PLAN EPP24636

PURSUANT TO SECTION 113 OF THE LAND TITLE ACT.
BCGS 93G.087

THIS PLAN LIES WITHIN INTEGRATED SURVEY
AREA No. 39, PRINCE GEORGE, NAD83 (CSRS)

THE INTENDED PLOT SIZE OF THIS PLAN IS 432mm IN WIDTH BY
560mm IN HEIGHT (C SIZE) WHEN PLOTTED AT A SCALE OF 1:750

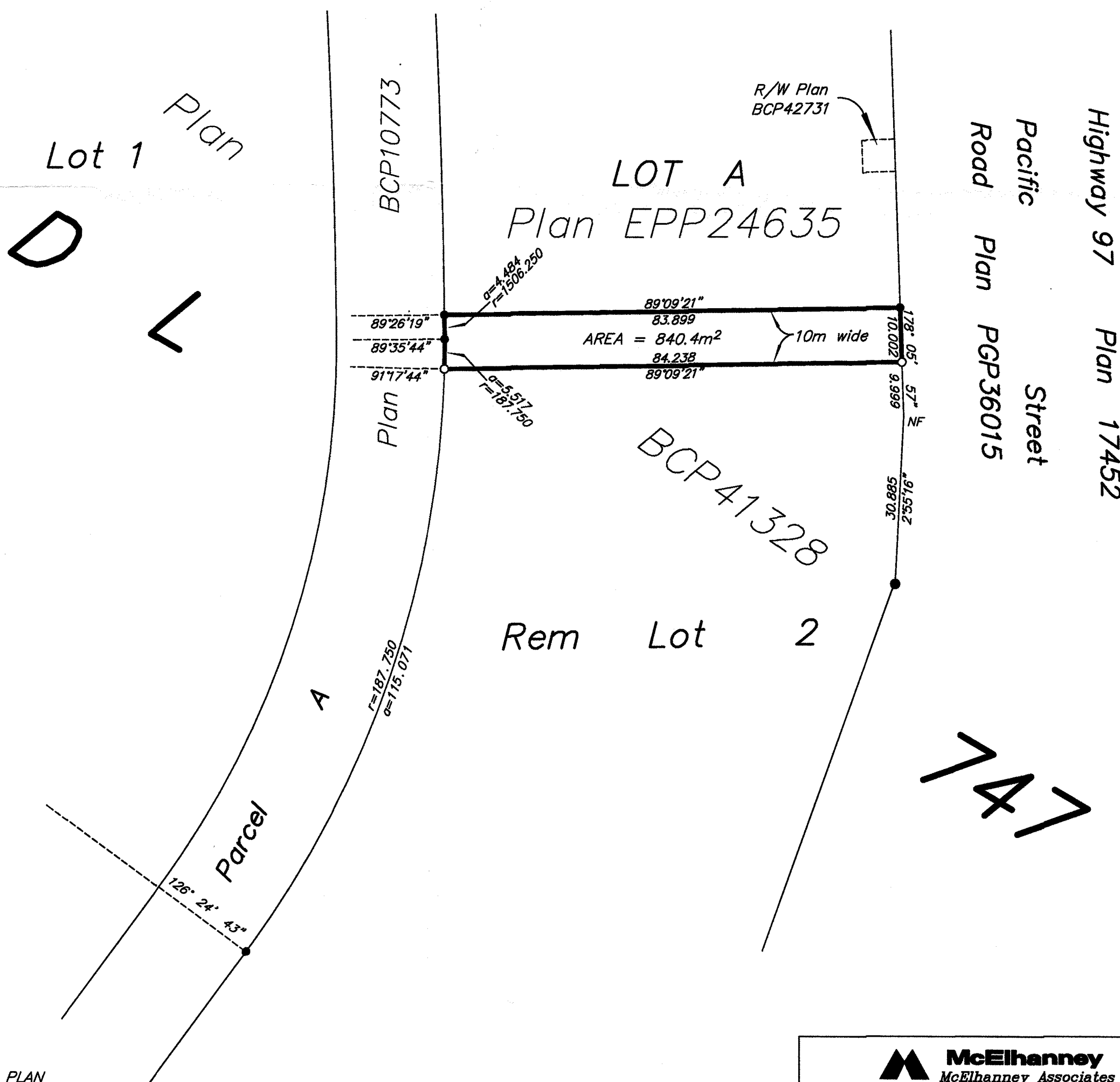
10m 0 10 20 30 50m

ALL DISTANCES ARE HORIZONTAL GROUND-LEVEL AND ARE SHOWN
IN METRES AND DECIMALS THEREOF, UNLESS OTHERWISE INDICATED.

GRID BEARINGS ARE DERIVED FROM PREVIOUSLY
INTEGRATED PLAN BCP

LEGEND

- Standard Iron Post Found
- Standard Iron Post Placed



THE FIELD SURVEY REPRESENTED BY THIS PLAN
WAS COMPLETED ON THE 1st DAY OF OCTOBER, 2012.
DALE KEOWN, BCLS

McElhanney
 McElhanney Associates
 Land Surveying Ltd.
 Prince George, B.C.
 E-mail: pgmalls@mcelhanney.com
 Ph: (250) 561-2229 Fax: (250) 563-1941

DL- 747	File No. - 6055-RW
---------	--------------------

THIS PLAN LIES WITHIN THE REGIONAL DISTRICT OF FRASER - FORT GEORGE.