

# PLAN OF SUBDIVISION OF LOTS 3, 4 AND PART OF LOT 2, DISTRICT LOT 747, CARIBOO DISTRICT, PLAN BCP41328.

## PLAN EPP24635

PURSUANT TO SECTION 67 OF THE LAND TITLE ACT.

BCGS 93G.087

THIS PLAN LIES WITHIN INTEGRATED SURVEY AREA No. 39, PRINCE GEORGE, NAD83 (CSRS)

THE INTENDED PLOT SIZE OF THIS PLAN IS 432mm IN WIDTH BY 560mm IN HEIGHT (C SIZE) WHEN PLOTTED AT A SCALE OF 1:1500

20m 0 20 40 60 100m



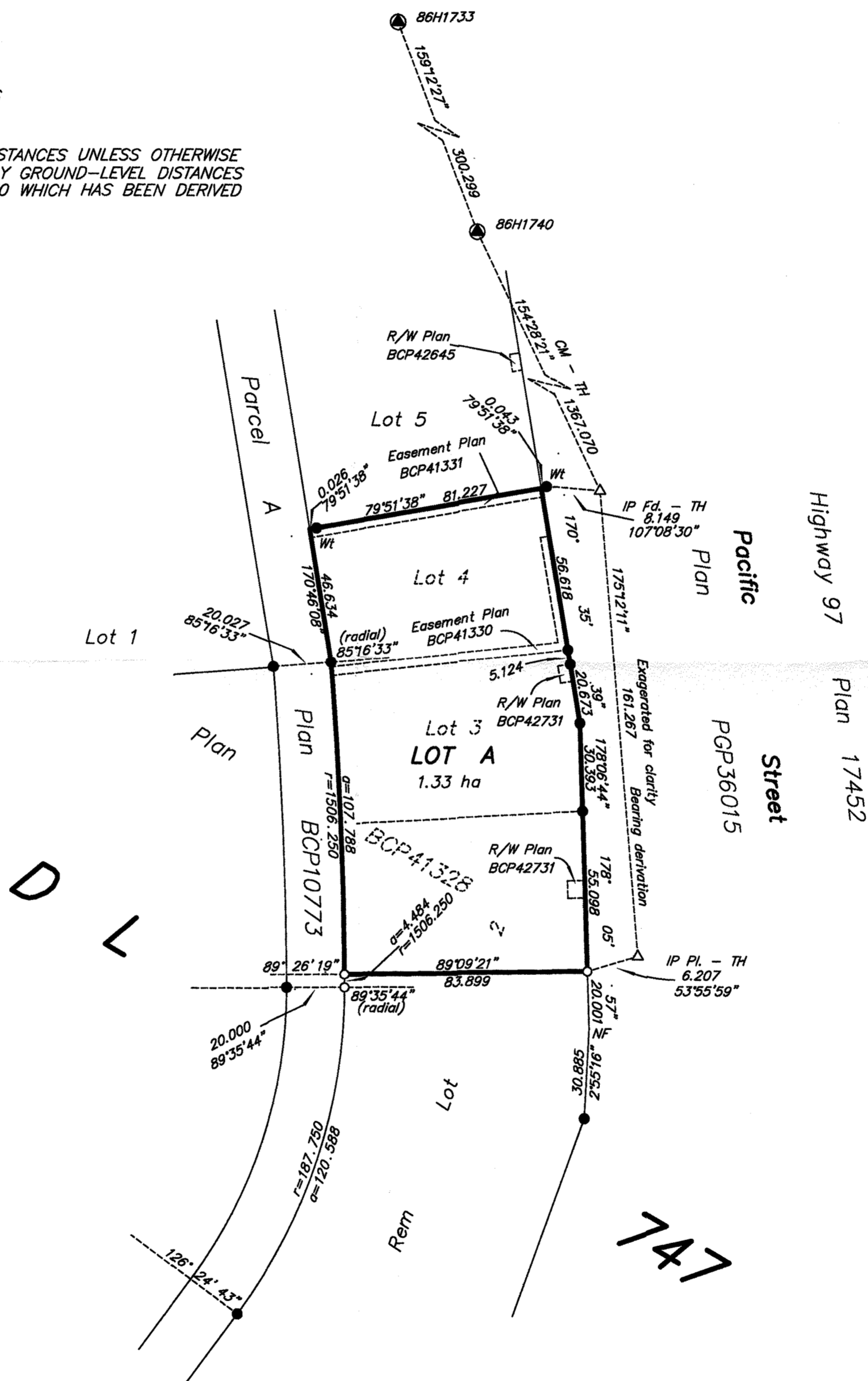
ALL DISTANCES ARE HORIZONTAL GROUND-LEVEL AND ARE SHOWN IN METRES AND DECIMALS THEREOF, UNLESS OTHERWISE INDICATED.

### LEGEND

- Standard Iron Post Found
- Standard Iron Post Placed
- ⊙ Control Monument Found
- △ Traverse Hub Placed

THIS PLAN SHOWS ONE OR MORE WITNESS POSTS WHICH ARE NOT SET ON THE TRUE CORNER(S).

THIS PLAN SHOWS HORIZONTAL GROUND-LEVEL DISTANCES UNLESS OTHERWISE SPECIFIED. TO COMPUTE GRID DISTANCES, MULTIPLY GROUND-LEVEL DISTANCES BY THE AVERAGE COMBINED FACTOR OF 0.9995130 WHICH HAS BEEN DERIVED FROM 86H1740 AND 86H1733.



THIS PLAN LIES WITHIN THE JURISDICTION OF THE APPROVING OFFICER FOR THE MINISTRY OF TRANSPORTATION AND INFRASTRUCTURE. MOTI File:

THIS PLAN LIES WITHIN THE JURISDICTION OF THE APPROVING OFFICER FOR THE CITY OF PRINCE GEORGE. CPG File: SD100387

THE FIELD SURVEY REPRESENTED BY THIS PLAN WAS COMPLETED ON THE 1st DAY OF OCTOBER, 2012. DALE KEOWN, BCLS

THIS PLAN LIES WITHIN THE REGIONAL DISTRICT OF FRASER - FORT GEORGE.

**McElhanney**  
 McElhanney Associates  
 Land Surveying Ltd.  
 Prince George, B.C.

E-mail: [pgmals@mcelhanney.com](mailto:pgmals@mcelhanney.com)  
 Ph: (250) 561-2229 Fax: (250) 563-1941

DL- 747	File No. - 6055
---------	-----------------