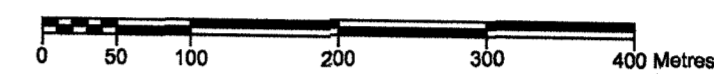


PLAN EPP 24510

SUBDIVISION PLAN OF PART OF DISTRICT LOT 9263, CARIBOO DISTRICT, EXCEPT PLANS 12846, 16592 AND PGP35513

BCGS 93G . 086



THE INTENDED PLOT SIZE OF THIS PLAN IS 560mm IN WIDTH BY 432mm IN HEIGHT ('C' SIZE) WHEN PLOTTED AT A SCALE OF 1:5000

LEGEND:

ALL DIMENSIONS ARE IN METRES AND DECIMALS THEREOF.

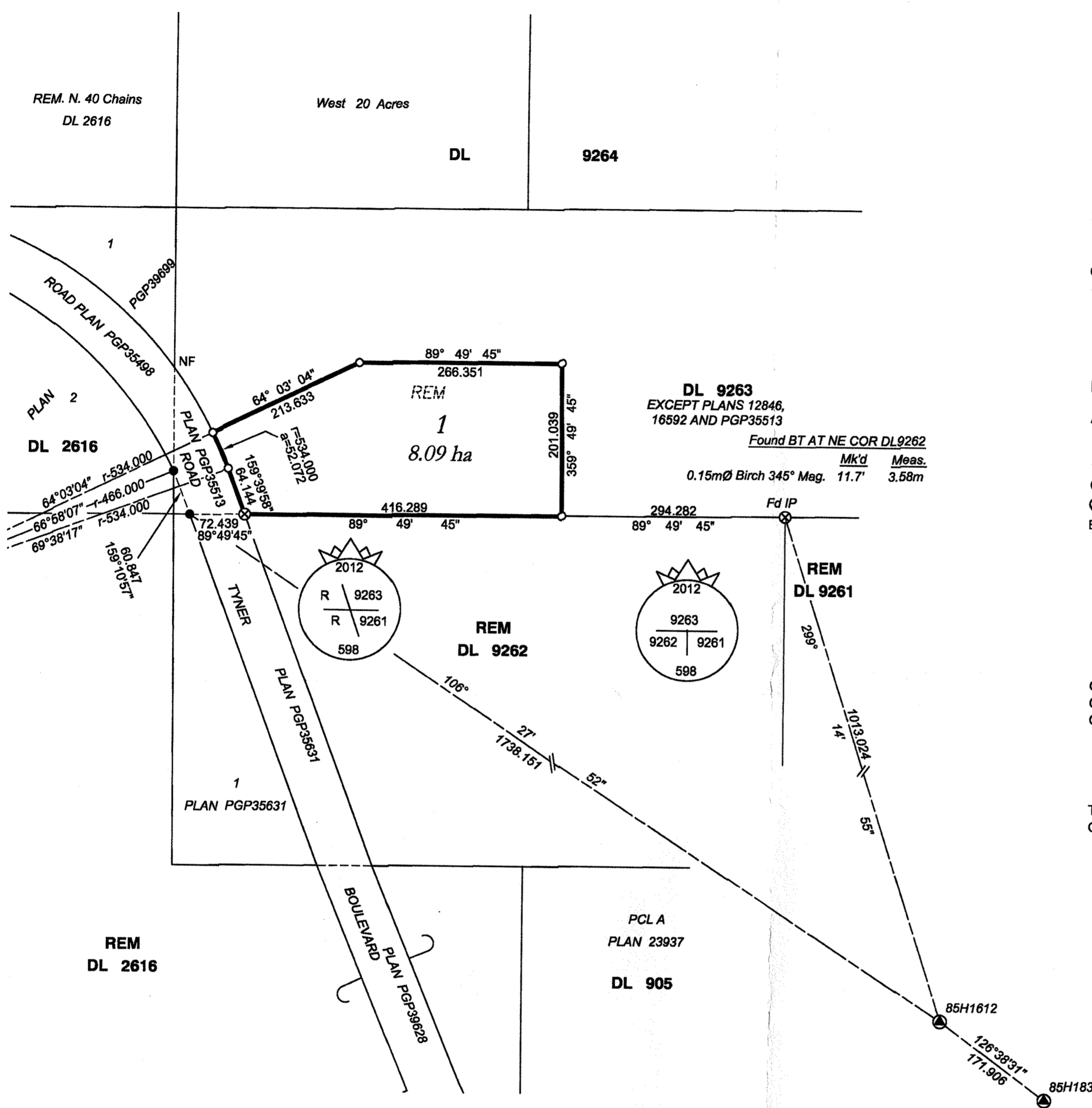
- STANDARD IRON POST FOUND
- STANDARD IRON POST PLACED
- ⊗ STANDARD CAPPED POST PLACED
- ⊙ INTEGRATED SURVEY AREA CONTROL MONUMENT FOUND
- BT BEARINGS ARE MAGNETIC

GRID BEARINGS ARE DERIVED FROM OBSERVATIONS BETWEEN CONTROL MONUMENTS 85H1817 AND 85H1832, INTEGRATED SURVEY AREA No. 39, CITY OF PRINCE GEORGE, NAD83 CSRS.

THIS PLAN SHOWS GROUND LEVEL MEASURED DISTANCES, PRIOR TO COMPUTATION OF UTM COORDINATES MULTIPLY BY COMBINED FACTOR OF 0.999483.

THIS PLAN LIES WITHIN THE REGIONAL DISTRICT OF FRASER-FORT GEORGE

THE FIELD SURVEY REPRESENTED BY THIS PLAN WAS COMPLETED ON THE 10th DAY OF OCTOBER, 2012. RICHARD E. GOOK, BCLS.



CHECKLIST # 142020 CHECKLIST DATE: October 23, 2012.

VECTOR GEOMATICS
LAND SURVEYING LTD

Head Office - Fort St. John
10628 Peck Lane, PO Box 9428
Fort St. John, B.C. V1J 4H8
Ph: (250) 785-7474 Fax: (250) 785-7454

Fort Nelson Office
104-4701 55th Street, PO Box 1138
Fort Nelson, B.C. V0C 1R0
Ph: (250) 774-7457 Fax: (250) 774-7458

WWW.VECTARGEOMATICS.COM

DRAWING No.: 1206299SUB
DATE : October 22, 2012.