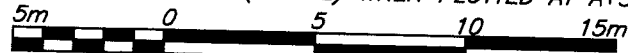


EXPLANATORY PLAN OF EASEMENT OVER PARTS OF  
 LOTS A AND B, DISTRICT LOT 754, CARIBOO DISTRICT,  
 PLAN EPP4651, EPP24303

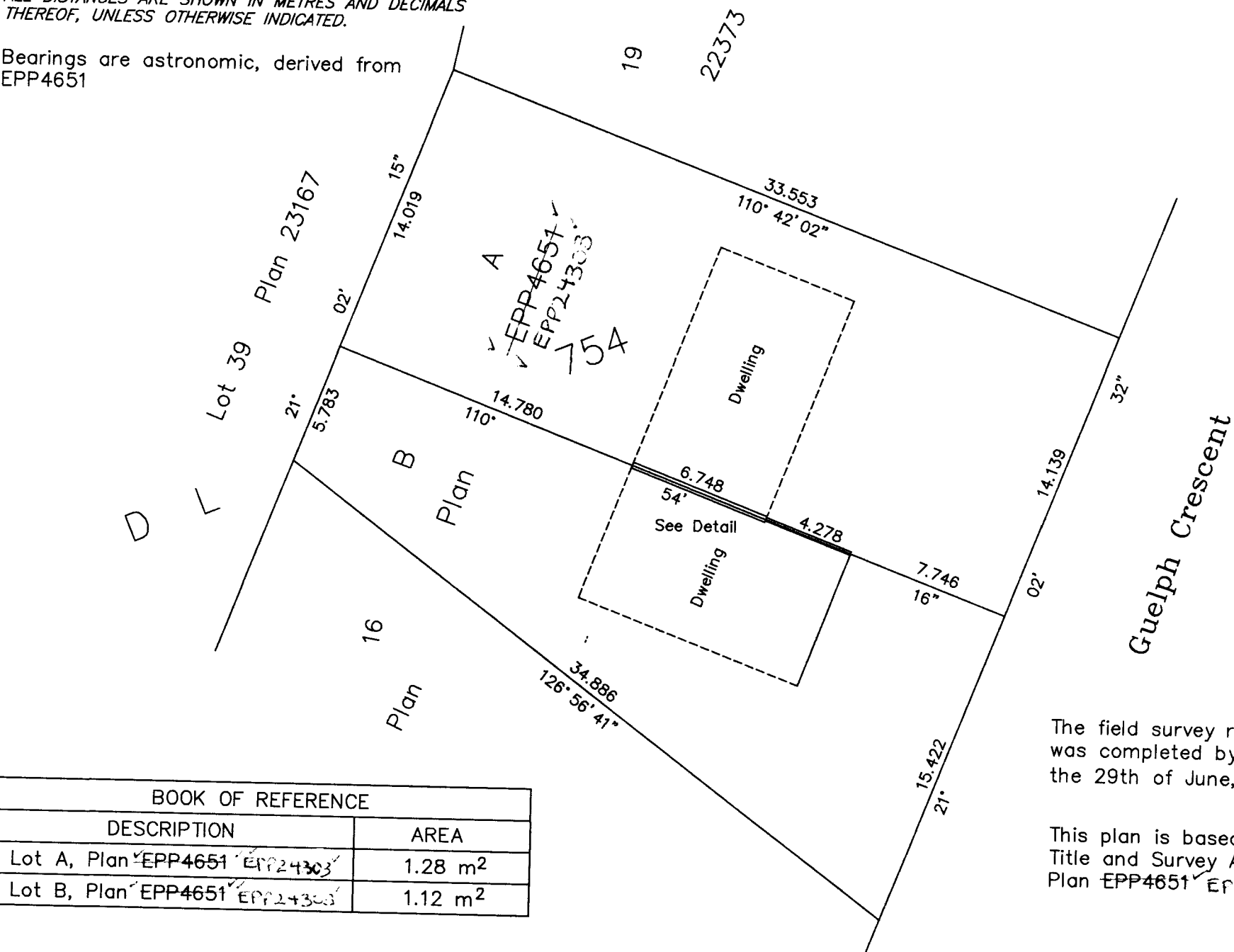
BCGS 936.087  
 Pursuant to Section 99(1)(e)  
 of the Land Title Act.

THE INTENDED PLOT SIZE OF THIS PLAN IS 432mm IN WIDTH BY  
 1280mm IN HEIGHT (B SIZE) WHEN PLOTTED AT A SCALE OF 1:250



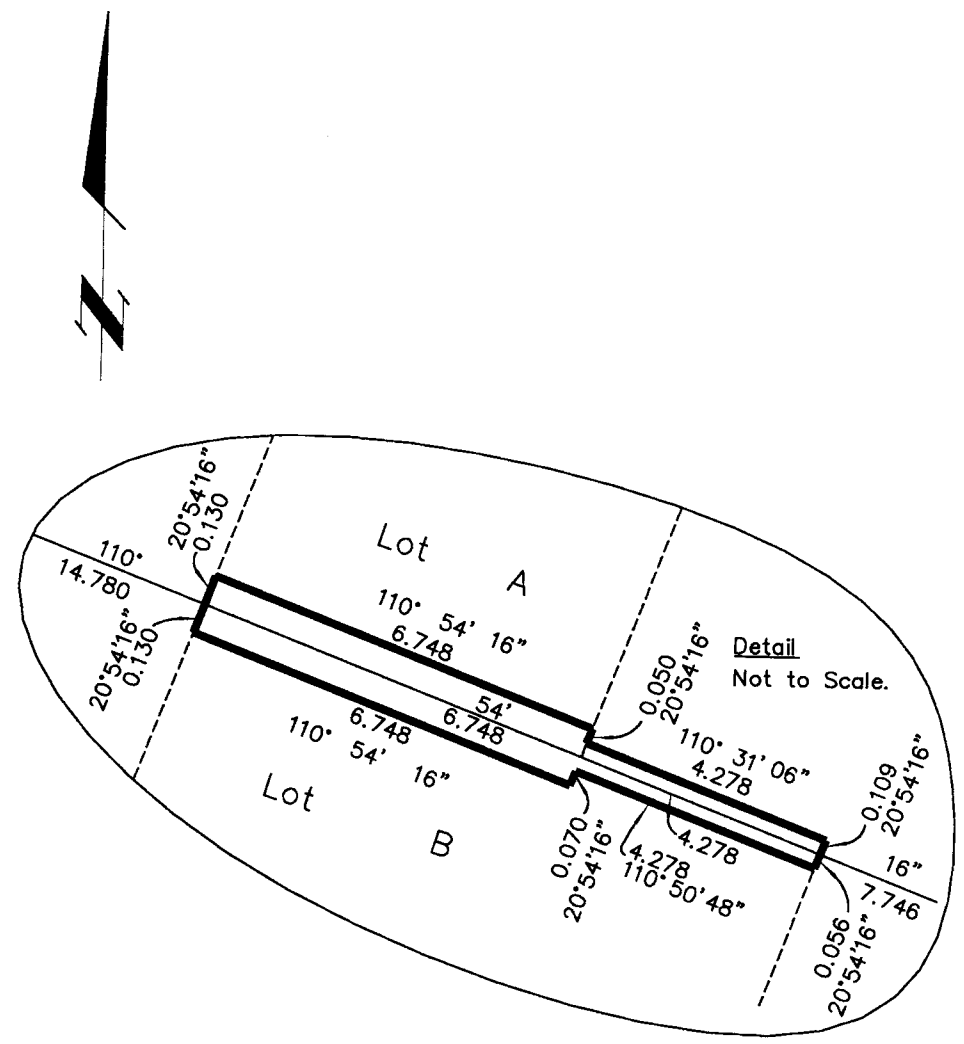
ALL DISTANCES ARE SHOWN IN METRES AND DECIMALS  
 THEREOF, UNLESS OTHERWISE INDICATED.

Bearings are astronomic, derived from  
 EPP4651



PLAN EPP24304

Corrected Dec 31, 2013  
 BY CA3+66365 Nov 21, 2013  
 L. Blaischuk per BB



BOOK OF REFERENCE	
DESCRIPTION	AREA
Lot A, Plan EPP4651 EPP24303	1.28 m <sup>2</sup>
Lot B, Plan EPP4651 EPP24303	1.12 m <sup>2</sup>

The field survey represented by this plan  
 was completed by Dale Keown, BCLS on  
 the 29th of June, 2009.

This plan is based on the following Land  
 Title and Survey Authority of BC Records  
 Plan EPP4651 EPP24303

This plan lies within the Fraser-Fort  
 George Regional District.

**McElhanney**  
 McElhanney Associates  
 Land Surveying Ltd.  
 Prince George, B.C.  
 Ph: (250) 562-1196 Fax: 563-1941

F.B.- XX76	D.L.- 754	File No. - 5386-1
------------	-----------	-------------------