

# EXPLANATORY PLAN OF EASEMENT OVER PART OF LOT 2, DISTRICT LOT 931, CARIBOO DISTRICT, PLAN 20939.

## PLAN EPP24296

BCGS 93G.097

Pursuant to Section 99(1)(e) of the Land Title Act.

THE INTENDED PLOT SIZE OF THIS PLAN IS 432mm IN WIDTH BY 560mm IN HEIGHT (C SIZE) WHEN PLOTTED AT A SCALE OF 1:500



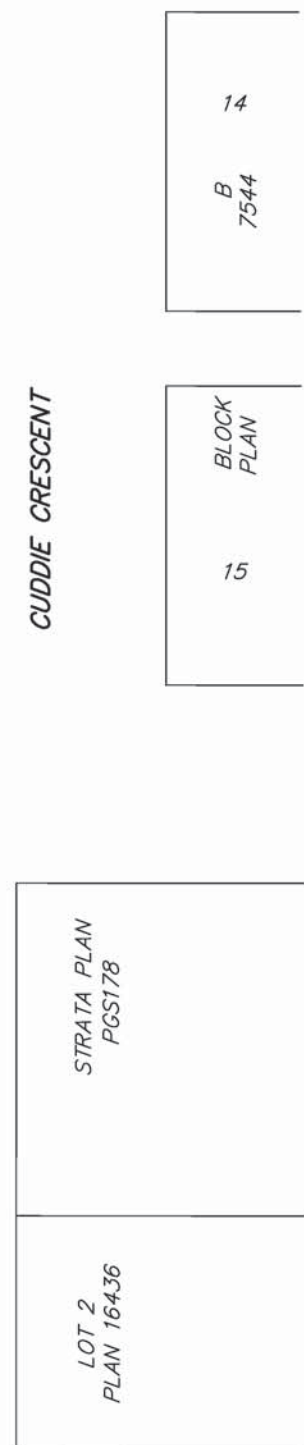
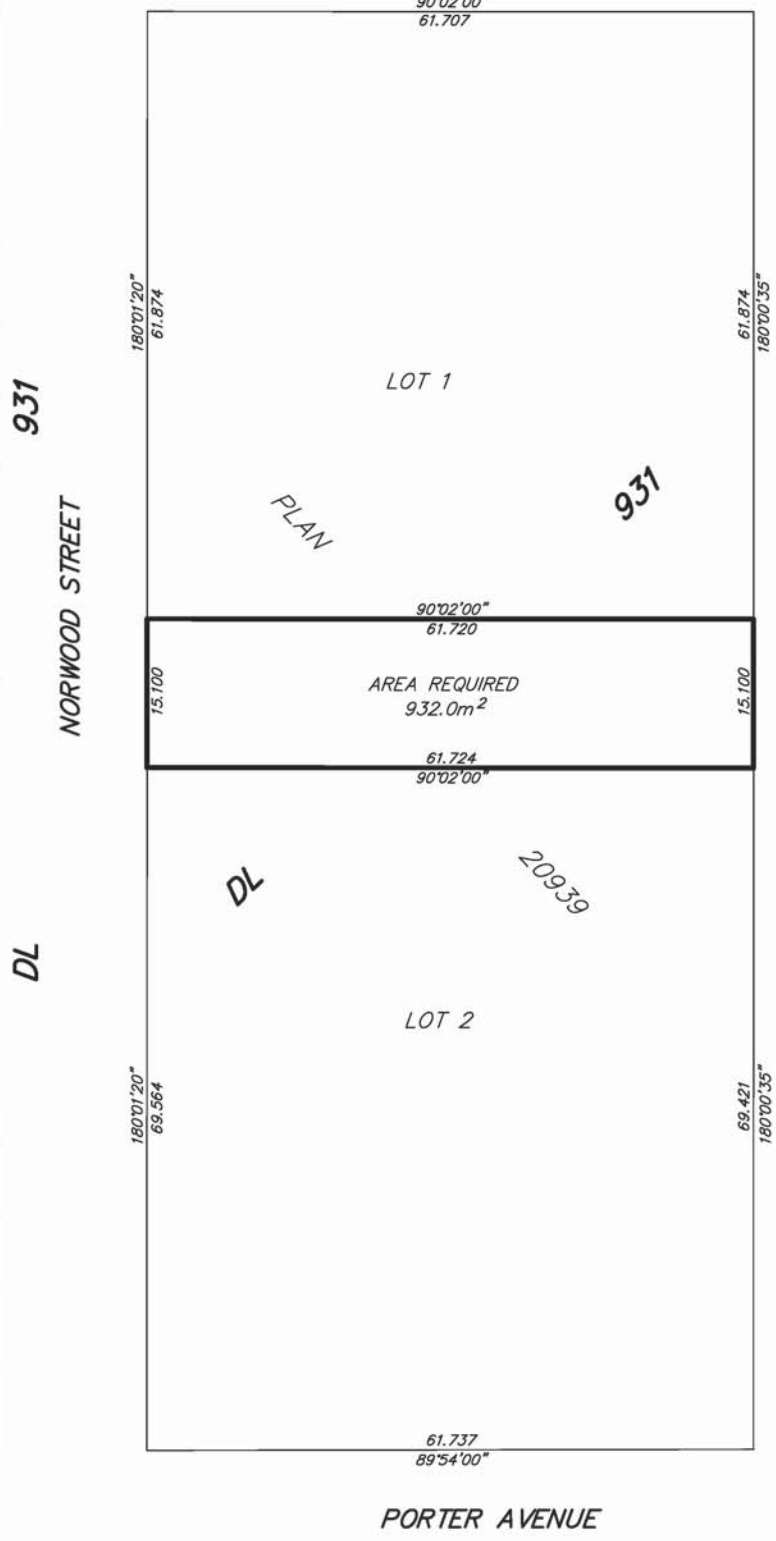
ALL DISTANCES ARE HORIZONTAL GROUND-LEVEL AND ARE SHOWN IN METRES AND DECIMALS THEREOF, UNLESS OTHERWISE INDICATED.

### LEGEND

BEARINGS ARE ASTRONOMIC AND ARE DERIVED FROM PLAN 20939.



PCL A PLAN BCP17164
22
BLOCK 4 PLAN 796
23
24
25
A
PLAN
20662
B
DL
PCL A (R2294)
35
BLOCK 4 PLAN 796
36
37
38



THIS PLAN IS BASED ON THE FOLLOWING LAND TITLE AND SURVEY AUTHORITY OF BC RECORDS: PLAN 20939 DALE KEOWN, BCLS 20th DAY OF SEPTEMBER, 2012

THIS PLAN LIES WITHIN THE REGIONAL DISTRICT OF FRASER - FORT GEORGE.

**McElhanney**  
 McElhanney Associates  
 Land Surveying Ltd.  
 Prince George, B.C.  
 E-mail: pgmats@mcelhanney.com  
 Ph: (250) 561-2229 Fax: (250) 563-1941

DL- 931	File No. - 6012-196-E
September 19, 2012	