

PLAN OF SUBDIVISION OF PART OF PARCEL D (B1176), EXCEPT PART IN PLAN BCP17684, DISTRICT LOT 3683, CARIBOO DISTRICT, PLAN 1153; PART OF PARCEL A (B1176), EXCEPT PART IN PLAN BCP17684, DISTRICT LOT 3683, CARIBOO DISTRICT, PLAN 1153 AND CLOSED ROAD, DISTRICT LOT 3683, CARIBOO DISTRICT, PLAN EPP24025.

PLAN EPP24026

BCGS 93G.096

PURSUANT TO SECTION 67 OF THE LAND TITLE ACT.

DL 3687
LOT 1
PLAN PGP37638
HILDEBRANDT ROAD

SW 1/4 OF
DL 3684

THE INTENDED PLOT SIZE OF THIS PLAN IS 432mm IN WIDTH BY 560mm IN HEIGHT (C SIZE) WHEN PLOTTED AT A SCALE OF 1:4000

ALL DISTANCES ARE SHOWN IN METRES AND DECIMALS THEREOF, UNLESS OTHERWISE INDICATED.

LEGEND

- DENOTES STANDARD CAPPED POST FOUND
- DENOTES STANDARD IRON POST FOUND
- DENOTES STANDARD IRON POST PLACED
- ▲ DENOTES TRAVERSE HUB FOUND
- U DENOTES UNREGISTERED

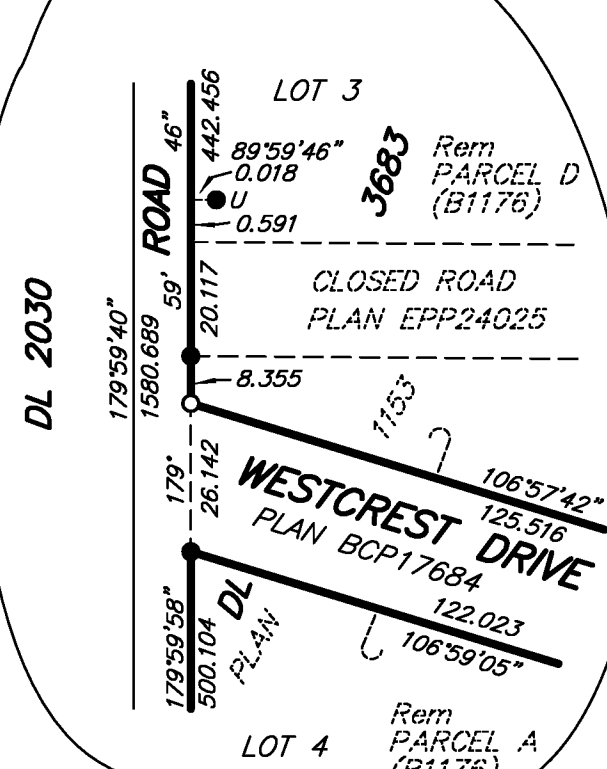
THIS PLAN SHOWS HORIZONTAL GROUND-LEVEL DISTANCES, UNLESS OTHERWISE SPECIFIED. TO COMPUTE GRID DISTANCES, MULTIPLY GROUND-LEVEL DISTANCES BY THE AVERAGE COMBINED FACTOR OF 0.9994834. THE AVERAGE COMBINED FACTOR HAS BEEN DETERMINED BASED ON AN ELLIPSOIDAL ELEVATION OF 747.7 METRES.

GRID BEARINGS ARE DERIVED FROM DIFFERENTIAL CARRIER PHASE GNSS OBSERVATIONS AND ARE REFERRED TO THE CENTRAL MERIDIAN OF UTM ZONE 10. TO OBTAIN LOCAL ASTRONOMIC BEARINGS REFERRED TO THE MERIDIAN THROUGH TRAVERSE HUB #10170, ADD 0°05'29".

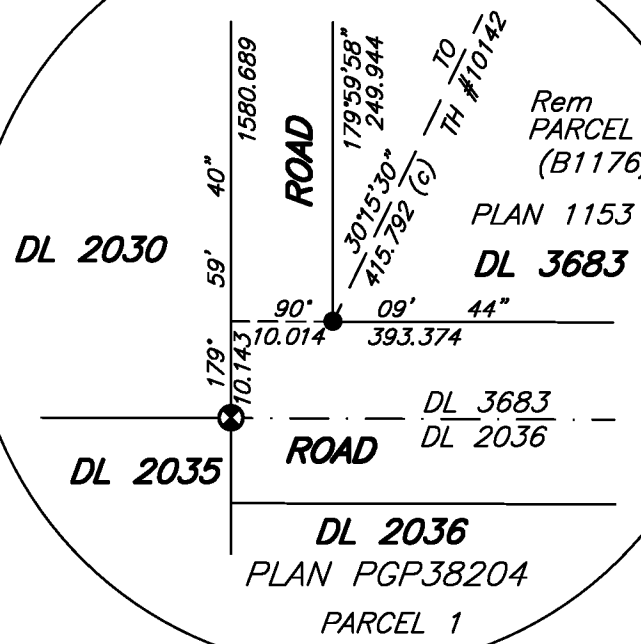
THE UTM COORDINATES AND ESTIMATED HORIZONTAL POSITIONAL ACCURACY ACHIEVED ARE DERIVED FROM DUAL FREQUENCY OBSERVATIONS PROCESSED USING NATURAL RESOURCES CANADA'S PRECISE POINT POSITIONING SERVICE.

TH #10170
DATUM: NAD83(CSRS) 4.0.0.BC.1
UTM ZONE 10 NORTH
UTM NORTHING.....5974725.45
UTM EASTING.....507430.99
POINT COMBINED SCALE FACTOR: 0.9994834
ESTIMATED HORIZONTAL ACCURACY IS 0.10 METRES.

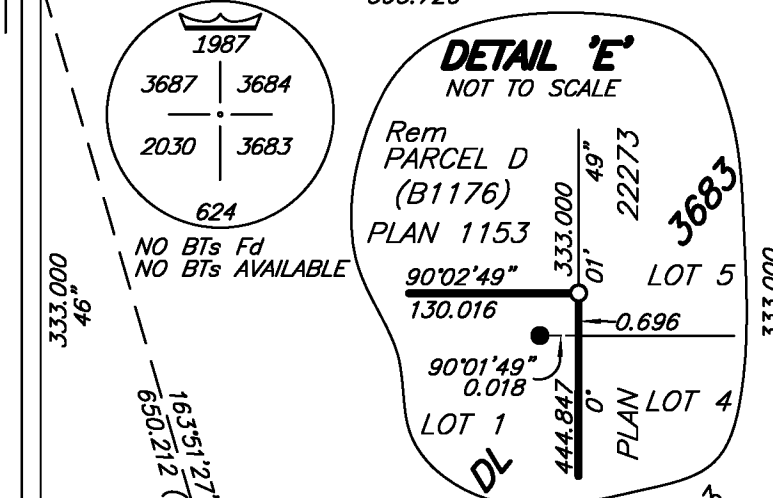
DETAIL 'A'
NOT TO SCALE



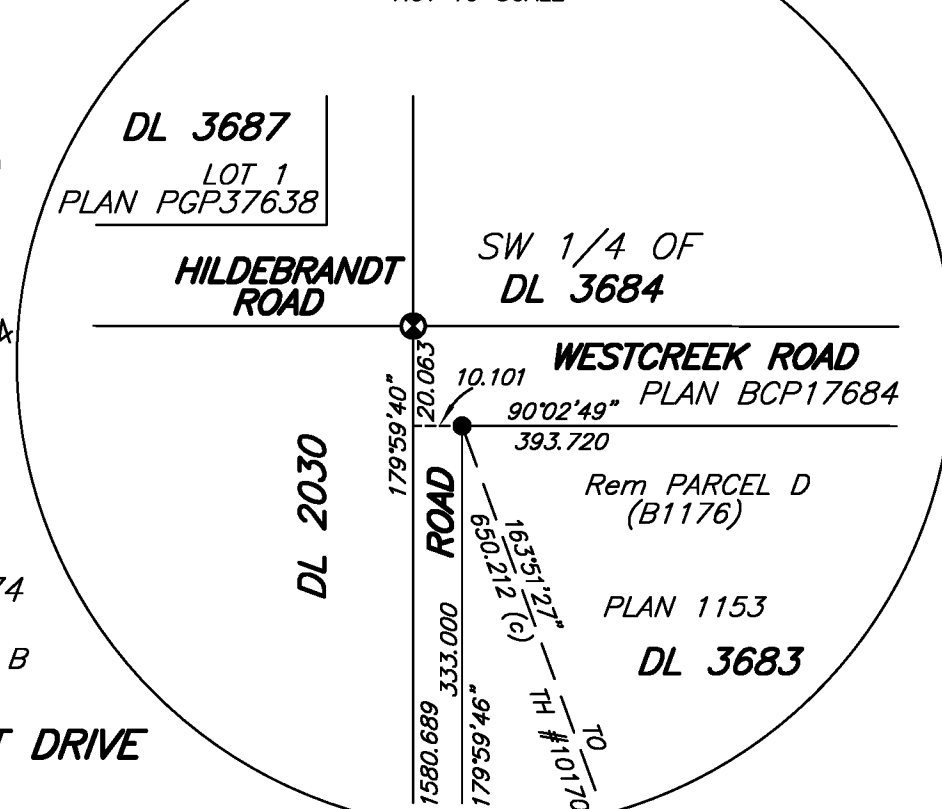
DETAIL 'D'
NOT TO SCALE



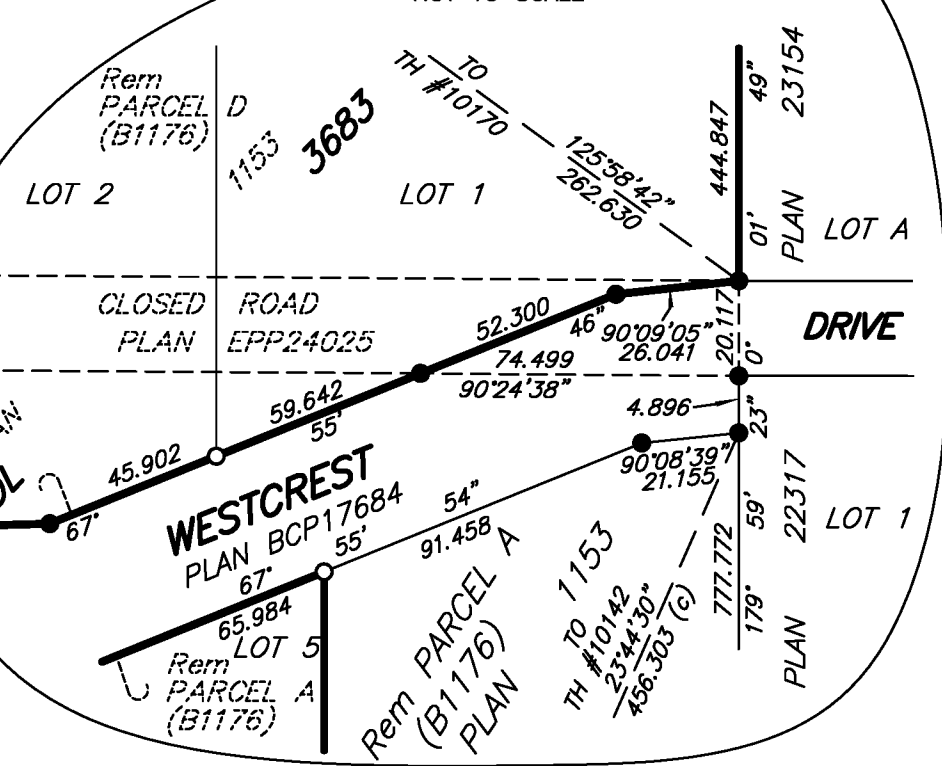
TH #10142
DATUM: NAD83(CSRS) 4.0.0.BC.1
UTM ZONE 10 NORTH
UTM NORTHING.....5974128.78
UTM EASTING.....507459.79
COMBINED SCALE FACTOR 0.9994810
ESTIMATED HORIZONTAL ACCURACY IS 0.10 METRES.



DETAIL 'C'
NOT TO SCALE



DETAIL 'B'
NOT TO SCALE



THE FIELD SURVEY REPRESENTED BY THIS PLAN WAS COMPLETED ON THE 15th DAY OF APRIL, 2015. DARREN KENT, BCLS 904

THIS PLAN LIES WITHIN THE JURISDICTION OF THE APPROVING OFFICER FOR THE CITY OF PRINCE GEORGE. CPG FILE: SD100347

McElhanney
McElhanney Associates
Land Surveying Ltd.
Prince George, B.C.
E-mail: pgmats@mcelhanney.com
Ph: (250) 561-2229

DL - 3683	File No. - 6054-S
CPG FILE: SD100347	

THIS PLAN LIES WITHIN THE REGIONAL DISTRICT OF FRASER - FORT GEORGE.

DL 2035 **DL 2036**
PARCEL 1 C PLAN PGP38204

INSPECTED UNDER THE LAND TITLE ACT ON THE 30th DAY OF JUNE, 2016.