

# REFERENCE PLAN FOR EASEMENT WITHIN LOT B, DISTRICT LOT 9261, CARIBOO DISTRICT, PLAN EPP11216.

PLAN EPP23918

Pursuant to Section 99(1)(i) of the Land Title Act.

BCGS 93G.087

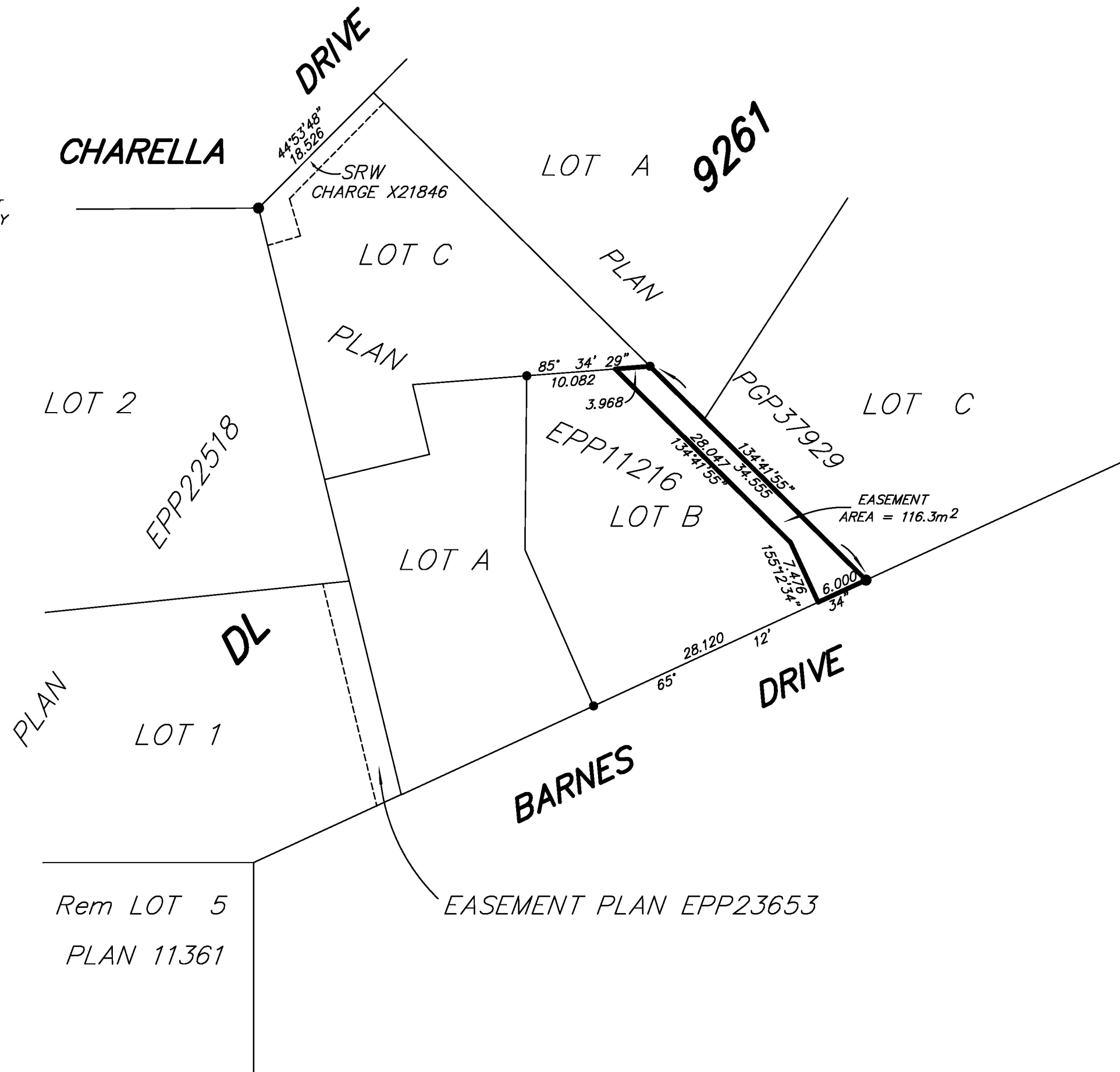
THIS PLAN LIES WITHIN INTEGRATED SURVEY AREA No. 39, PRINCE GEORGE, NAD83 (CSRS).

THE INTENDED PLOT SIZE OF THIS PLAN IS 560mm IN WIDTH BY 432mm IN HEIGHT (C SIZE) WHEN PLOTTED AT A SCALE OF 1:500.



ALL DISTANCES ARE SHOWN IN METRES AND DECIMALS THEREOF, UNLESS OTHERWISE INDICATED.

**LEGEND**  
 GRID BEARINGS ARE DERIVED FROM PREVIOUSLY INTEGRATED PLAN EPP11216.  
 • DENOTES STANDARD IRON POST FOUND  
 THIS PLAN SHOWS HORIZONTAL GROUND-LEVEL DISTANCES EXCEPT WHERE OTHERWISE NOTED. TO COMPUTE GRID DISTANCES, MULTIPLY GROUND-LEVEL DISTANCES BY COMBINED FACTOR 0.99950220.



THE FIELD SURVEY REPRESENTED BY THIS PLAN WAS COMPLETED ON THE 3rd DAY OF SEPTEMBER, 2012.  
 DALE KEOWN, BCLS

THIS PLAN LIES WITHIN THE REGIONAL DISTRICT OF FRASER-FORT GEORGE.

<p><b>McElhanney</b>                  McElhanney Associates                  Land Surveying Ltd.                  Prince George, B.C.</p>	
Ph: (250) 561-2229 Fax: (250) 563-1941	
DL 9261	DWG - 5842 E