

PLAN OF SUBDIVISION OF LOT 3, DISTRICT LOT 754, CARIBOO DISTRICT, PLAN PGP38418 AND PART OF LOT 1, DISTRICT LOT 754, CARIBOO DISTRICT, PLAN PGP38594.

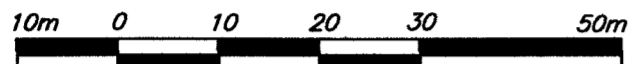
PLAN EPP23493

PURSUANT TO SECTION 67 OF THE LAND TITLE ACT

BCGS 93G.087

THIS PLAN LIES WITHIN INTEGRATED SURVEY AREA NO. 39, PRINCE GEORGE, NAD83 (CSRS)

THE INTENDED PLOT SIZE OF THIS PLAN IS 432mm IN WIDTH BY 560mm IN HEIGHT (C SIZE) WHEN PLOTTED AT A SCALE OF 1:750



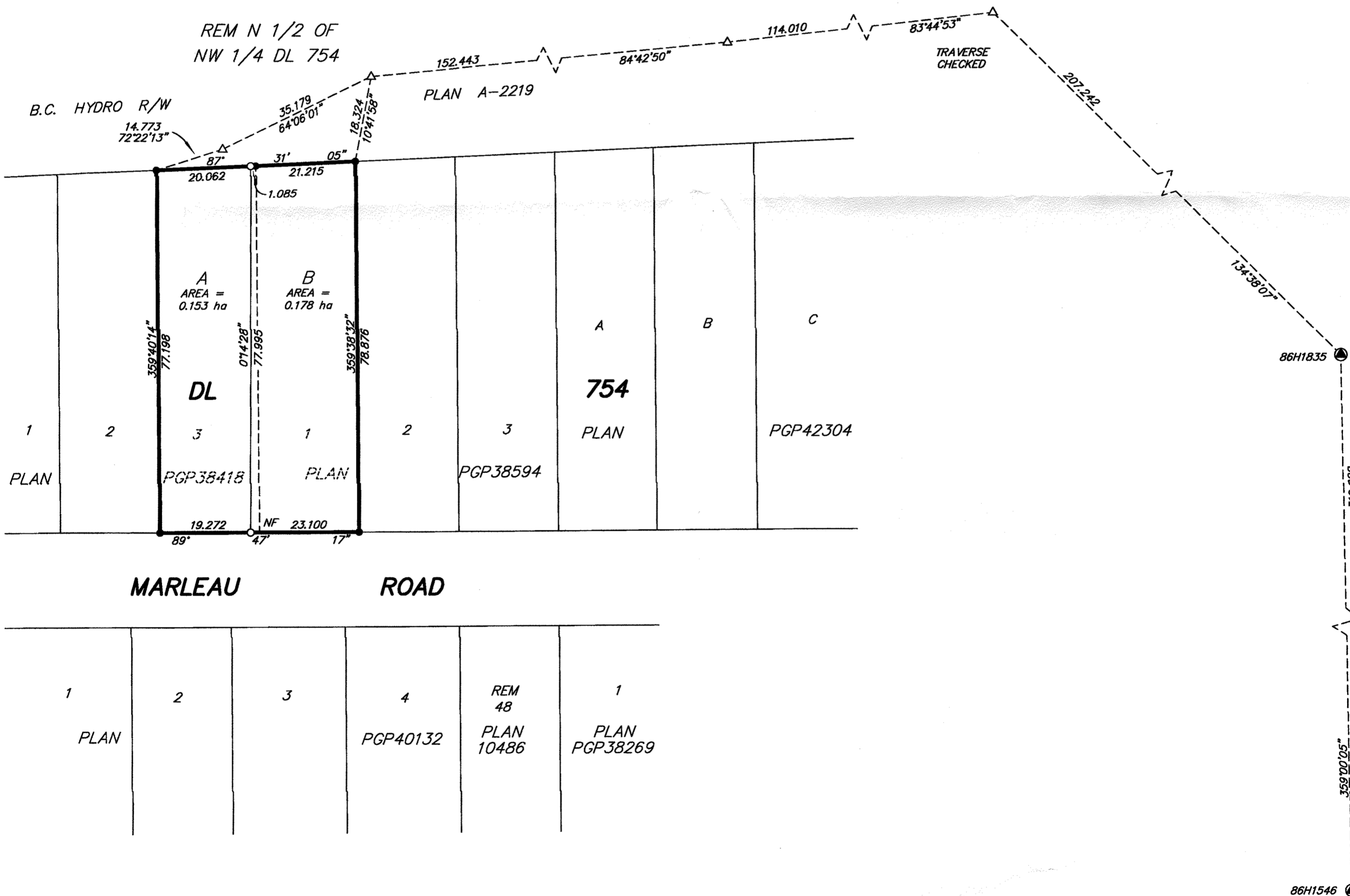
ALL DISTANCES ARE HORIZONTAL GROUND-LEVEL AND ARE SHOWN IN METRES AND DECIMALS THEREOF, UNLESS OTHERWISE INDICATED.

LEGEND

GRID BEARINGS ARE DERIVED FROM OBSERVATIONS BETWEEN CONTROL MONUMENTS 86H1835 AND 86H1546.

- DENOTES STANDARD IRON POST FOUND
- DENOTES STANDARD IRON POST PLACED
- △ DENOTES TRAVERSE HUB PLACED
- ⊙ DENOTES CONTROL MONUMENT FOUND

THIS PLAN SHOWS HORIZONTAL GROUND-LEVEL DISTANCES UNLESS OTHERWISE SPECIFIED. TO COMPUTE GRID DISTANCES, MULTIPLY GROUND-LEVEL DISTANCES BY THE AVERAGE COMBINED FACTOR OF 0.9995090 WHICH HAS BEEN DERIVED FROM 86H1835 AND 86H1546.



THE FIELD SURVEY REPRESENTED BY THIS PLAN WAS COMPLETED ON THE 20th DAY OF AUGUST, 2012. DALE KEOWN, BCLS.

THIS PLAN LIES WITHIN THE JURISDICTION OF THE APPROVING OFFICER FOR THE CITY OF PRINCE GEORGE. CPG File: SD100392

THIS PLAN LIES WITHIN THE REGIONAL DISTRICT OF FRASER - FORT GEORGE.

McElhanney
 McElhanney Associates
 Land Surveying Ltd.
 Prince George, B.C.
 E-mail: pgm@mcElhanney.com
 Ph: (250) 561-2229 Fax: (250) 563-1941

DL- 754	File No. - 6041
---------	-----------------