

PLAN OF SUBDIVISION OF LOT 39, DISTRICT LOT 9261, CARIBOO DISTRICT, PLAN 11361, EXCEPT PARCEL A (67551M) AND LOT B, DISTRICT LOT 9261, CARIBOO DISTRICT, PLAN BCP38587.

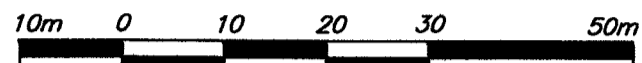
PLAN EPP23369

PURSUANT TO SECTION 67 OF THE LAND TITLE ACT

BCGS 93G.087

THIS PLAN LIES WITHIN INTEGRATED SURVEY AREA NO. 39, PRINCE GEORGE, NAD83 (CSRS)

THE INTENDED PLOT SIZE OF THIS PLAN IS 560mm IN WIDTH BY 432mm IN HEIGHT (C SIZE) WHEN PLOTTED AT A SCALE OF 1:750



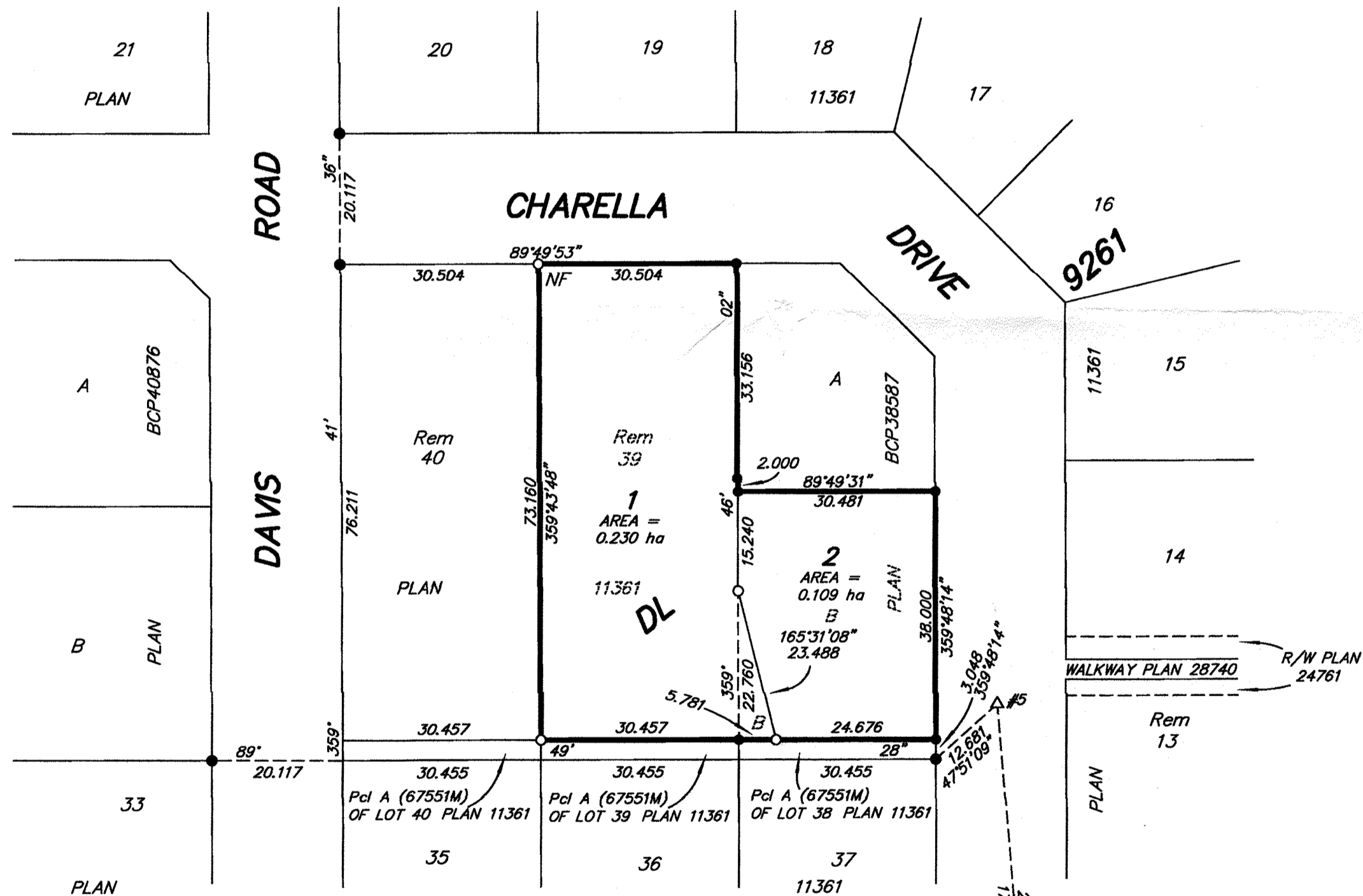
ALL DISTANCES ARE HORIZONTAL GROUND-LEVEL AND ARE SHOWN IN METRES AND DECIMALS THEREOF, UNLESS OTHERWISE INDICATED.

LEGEND

GRID BEARINGS ARE DERIVED FROM OBSERVATIONS BETWEEN CONTROL MONUMENTS 86H1817 AND 86H1832.

- DENOTES STANDARD IRON POST FOUND
- DENOTES STANDARD IRON POST PLACED
- △ DENOTES TRAVERSE HUB PLACED

THIS PLAN SHOWS HORIZONTAL GROUND-LEVEL DISTANCES UNLESS OTHERWISE SPECIFIED. TO COMPUTE GRID DISTANCES, MULTIPLY GROUND-LEVEL DISTANCES BY THE AVERAGE COMBINED FACTOR OF 0.9995025 WHICH HAS BEEN DERIVED FROM 86H1817 AND 86H1832.



TRAVERSE TABLE			
FROM STA.	BEARING	DISTANCE	TO STA.
5	174° 52' 21"	252.479	4
4	102° 33' 26"	84.431	3
3	135° 15' 19"	87.773	86H1817
86H1817	126° 38' 30"	171.939	86H1832

THE FIELD SURVEY REPRESENTED BY THIS PLAN WAS COMPLETED ON THE 17th DAY OF AUGUST, 2012. DALE KEOWN, BCLS.

THIS PLAN LIES WITHIN THE JURISDICTION OF THE APPROVING OFFICER FOR THE CITY OF PRINCE GEORGE. CPG File: SD100397

THIS PLAN LIES WITHIN THE REGIONAL DISTRICT OF FRASER - FORT GEORGE.



McElhanney
McElhanney Associates
Land Surveying Ltd.
Prince George, B.C.

E-mail: pgm@mcElhanney.com
Ph: (250) 561-2229 Fax: (250) 563-1941

DL- 9261

File No. - 6040