

REFERENCE PLAN FOR COVENANT OVER PART OF LOTS 1 AND 2, DISTRICT LOT 4047, CARIBOO DISTRICT, PLAN EPP13663.

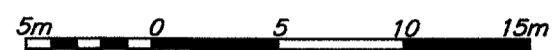
PLAN EPP23344

PURSUANT TO SECTION 99(1)(e) OF THE LAND TITLE ACT.

BCGS 93G.097

THIS PLAN LIES WITHIN INTEGRATED SURVEY
AREA No. 39, PRINCE GEORGE, NAD83 (CSRS)

THE INTENDED PLOT SIZE OF THIS PLAN IS 432mm IN WIDTH BY
560mm IN HEIGHT (C SIZE) WHEN PLOTTED AT A SCALE OF 1:300



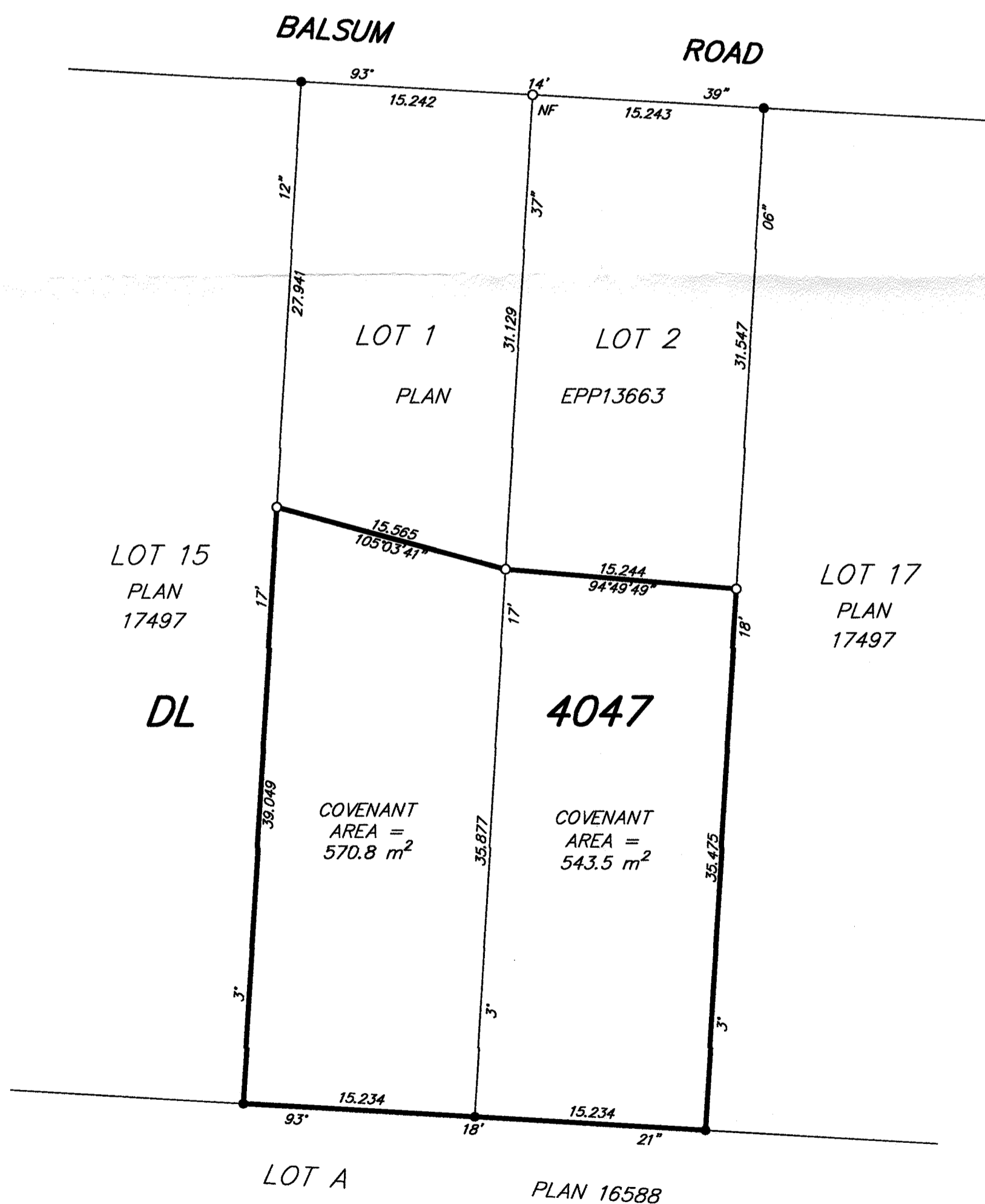
ALL DISTANCES ARE HORIZONTAL GROUND-LEVEL AND ARE SHOWN
IN METRES AND DECIMALS THEREOF, UNLESS OTHERWISE INDICATED.



LEGEND

GRID BEARINGS ARE DERIVED FROM PREVIOUSLY
INTEGRATED PLAN EPP13663.

- DENOTES STANDARD IRON POST FOUND
- DENOTES STANDARD IRON POST PLACED



THE FIELD SURVEY REPRESENTED BY THIS PLAN
WAS COMPLETED BY DALE KEOWN, BCLS
ON THE 15th DAY OF AUGUST, 2012.

THIS PLAN LIES WITHIN THE REGIONAL DISTRICT OF FRASER - FORT GEORGE.

McElhanney
 McElhanney Associates
 Land Surveying Ltd.
 Prince George, B.C.
 E-mail: pgmals@mcelhanney.com
 Ph: (250) 561-2229 Fax: (250) 563-1941

DL- 4047

File No. - 6012-171 COV