

**REFERENCE PLAN FOR EASEMENT WITHIN LOT 84
DISTRICT LOT 2003, CARIBOO DISTRICT, PLAN PGP41802,
EXCEPT STRATA PLAN EPS1818 AND PHASE 1
OF STRATA PLAN EPS1818.**

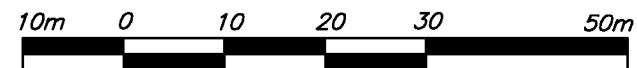
PLAN EPP23234

BCGS 93G.087

THIS PLAN LIES WITHIN INTEGRATED SURVEY
AREA No. 39, PRINCE GEORGE, NAD83 (CSRS)

PURSUANT TO SECTION 99(1)(e) OF THE LAND TITLE ACT.

THE INTENDED PLOT SIZE OF THIS PLAN IS 560mm IN WIDTH BY
432mm IN HEIGHT (C SIZE) WHEN PLOTTED AT A SCALE OF 1:750



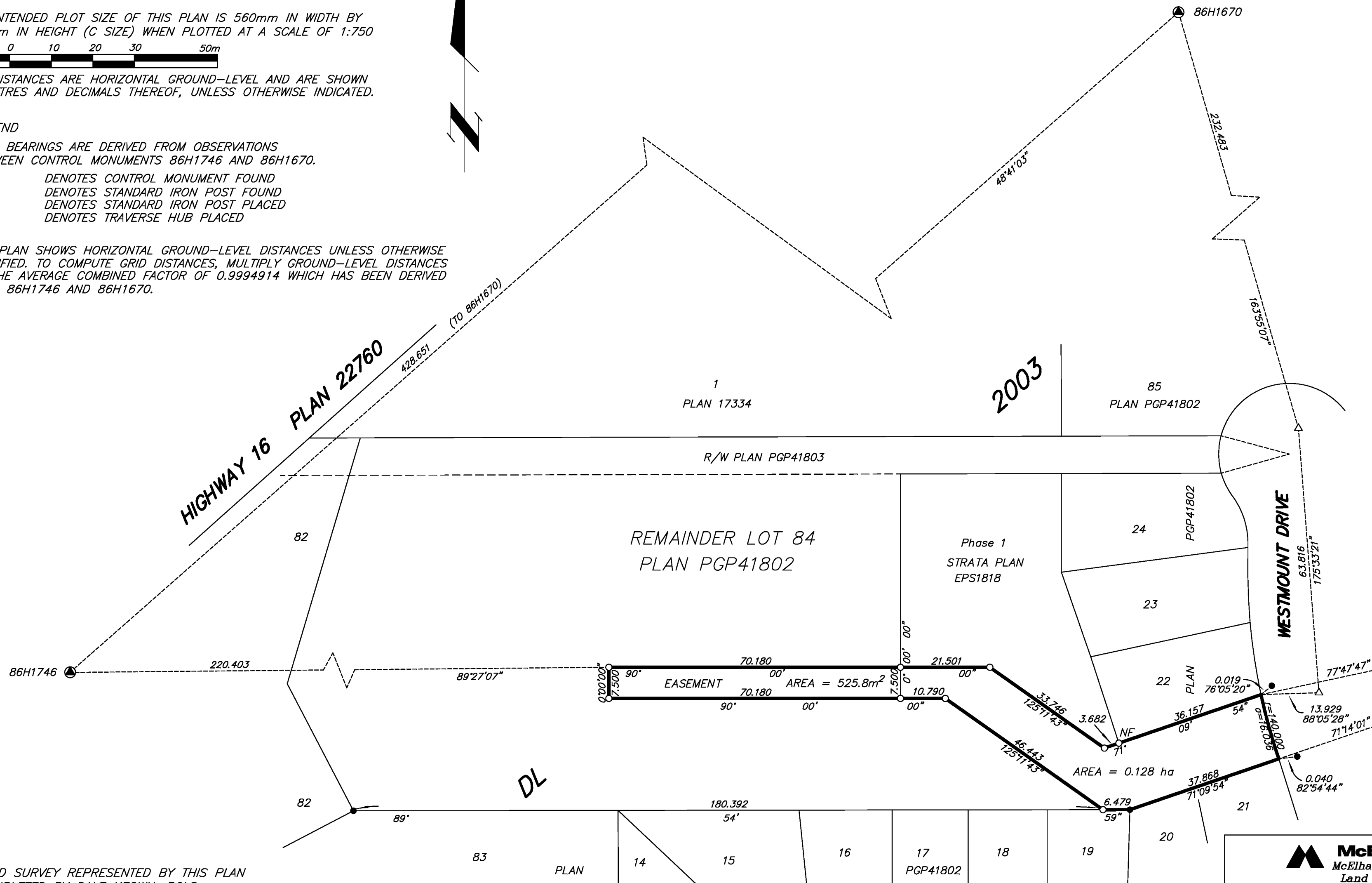
ALL DISTANCES ARE HORIZONTAL GROUND-LEVEL AND ARE SHOWN
IN METRES AND DECIMALS THEREOF, UNLESS OTHERWISE INDICATED.

LEGEND

GRID BEARINGS ARE DERIVED FROM OBSERVATIONS
BETWEEN CONTROL MONUMENTS 86H1746 AND 86H1670.


- DENOTES CONTROL MONUMENT FOUND
- DENOTES STANDARD IRON POST FOUND
- DENOTES STANDARD IRON POST PLACED
- △ DENOTES TRAVERSE HUB PLACED

THIS PLAN SHOWS HORIZONTAL GROUND-LEVEL DISTANCES UNLESS OTHERWISE
SPECIFIED. TO COMPUTE GRID DISTANCES, MULTIPLY GROUND-LEVEL DISTANCES
BY THE AVERAGE COMBINED FACTOR OF 0.9994914 WHICH HAS BEEN DERIVED
FROM 86H1746 AND 86H1670.



THE FIELD SURVEY REPRESENTED BY THIS PLAN
WAS COMPLETED BY DALE KEOWN, BCLS
ON THE 8th DAY OF AUGUST, 2012.

THIS PLAN LIES WITHIN THE REGIONAL DISTRICT OF FRASER - FORT GEORGE.

 McElhanney McElhanney Associates Land Surveying Ltd. Prince George, B.C. E-mail: pgmals@mcelhanney.com Ph: (250) 561-2229 Fax: (250) 563-1941		
DL- 2003	REV 1	File No. - 5830-E