

PLAN EPP22703

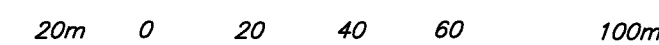
REFERENCE PLAN OF PART OF LOT 1, DISTRICT LOT 2003, CARIBOO DISTRICT, PLAN 9797 EXCEPT: FIRSTLY; PART DEDICATED ROAD ON PLAN PGP39628 SECONDLY; PART SUBDIVIDED BY PLAN PGP40175 THIRDLY; PART SUBDIVIDED BY PLAN BCP42930.

PURSUANT TO SECTION 99(1)(h) OF THE LAND TITLE ACT

BCGS 93G.087

THIS PLAN LIES WITHIN INTEGRATED SURVEY AREA No. 39, PRINCE GEORGE, NAD83 (CSRS)

THE INTENDED PLOT SIZE OF THIS PLAN IS 864mm IN WIDTH BY 560mm IN HEIGHT (D SIZE) WHEN PLOTTED AT A SCALE OF 1:1500



ALL DISTANCES ARE HORIZONTAL GROUND-LEVEL, AND ARE SHOWN IN METRES AND DECIMALS THEREOF, UNLESS OTHERWISE INDICATED.

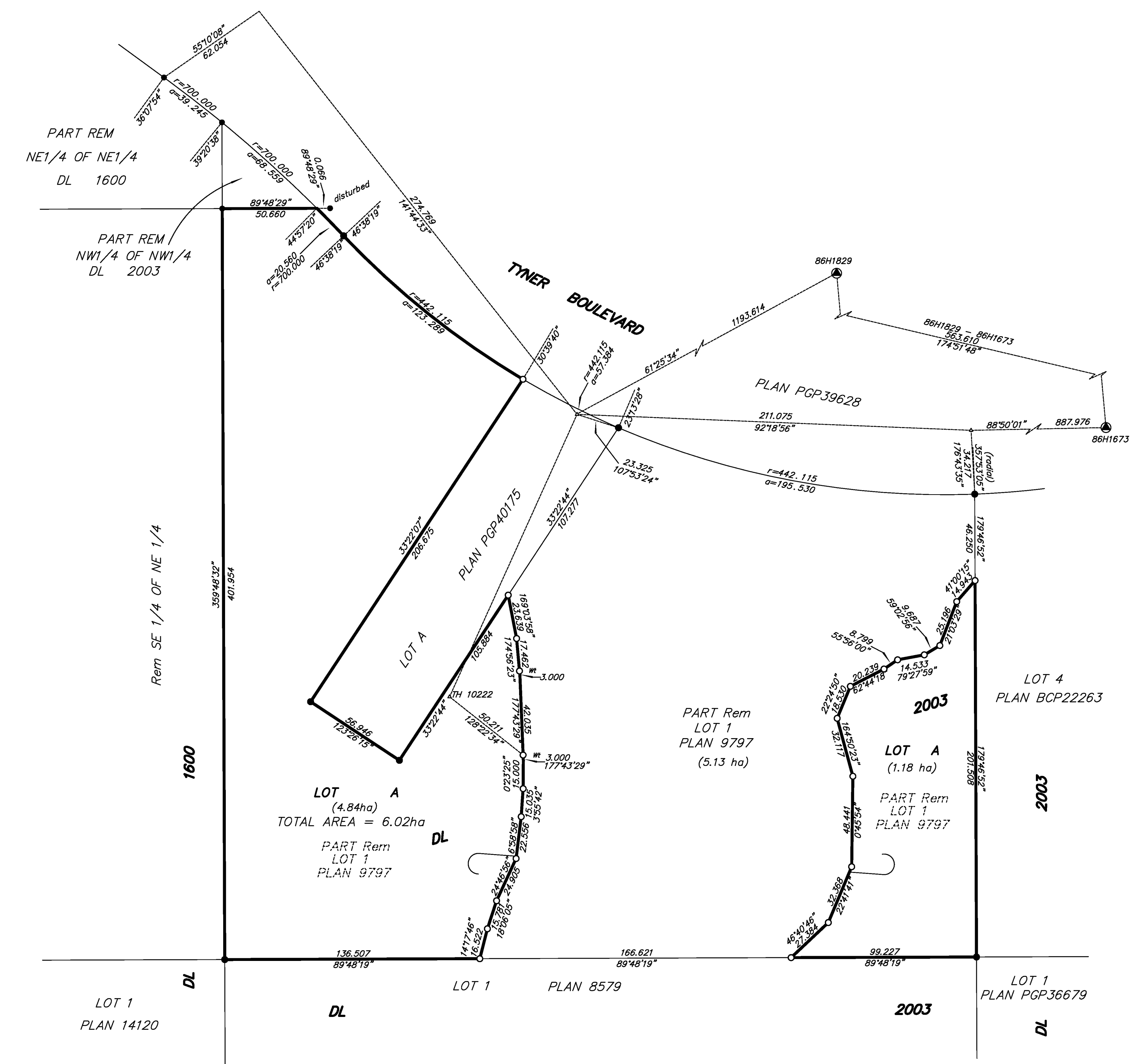
LEGEND

GRID BEARINGS ARE DERIVED FROM OBSERVATIONS BETWEEN CONTROL MONUMENTS 86H1673 AND 86H1829

- DENOTES CONTROL MONUMENT FOUND
● DENOTES STANDARD IRON POST FOUND
○ DENOTES STANDARD IRON POST PLACED
△ DENOTES TRAVERSE HUB

THIS PLAN SHOWS HORIZONTAL GROUND-LEVEL DISTANCES UNLESS OTHERWISE SPECIFIED. TO COMPUTE GRID DISTANCES, MULTIPLY GROUND-LEVEL DISTANCES BY THE AVERAGE COMBINED FACTOR OF 0.999489 WHICH HAS BEEN DERIVED FROM GPS STATIC BASE AT TH10222.

THIS PLAN SHOWS ONE OR MORE WITNESS POSTS WHICH ARE NOT SET ON THE TRUE CORNER(S).



THE FIELD SURVEY REPRESENTED BY THIS PLAN WAS COMPLETED ON THE 31st DAY OF OCTOBER, 2012. DALE KEOWN, BCLS

THIS PLAN LIES WITHIN THE REGIONAL DISTRICT OF FRASER - FORT GEORGE.

McElhanney Associates Land Surveying Ltd. Prince George, B.C. E-mail: pgm@mcclhanney.com Ph: (250) 561-2229 Fax: (250) 563-1941 DL- 2003 File No. - 6068-S-1