

REFERENCE PLAN FOR COVENANT OVER PART OF LOT 1, DISTRICT LOT 634, CARIBOO DISTRICT, PLAN EPP22433.

PLAN EPP22434

PURSUANT TO SECTION 99(1)(e) OF THE LAND TITLE ACT.

BCGS 93G.087

THIS PLAN LIES WITHIN INTEGRATED SURVEY AREA No. 39, PRINCE GEORGE, NAD83 (CSRS)

THE INTENDED PLOT SIZE OF THIS PLAN IS 560mm IN WIDTH BY 432mm IN HEIGHT (C SIZE) WHEN PLOTTED AT A SCALE OF 1:1000

20m 0 20 40 60 80m

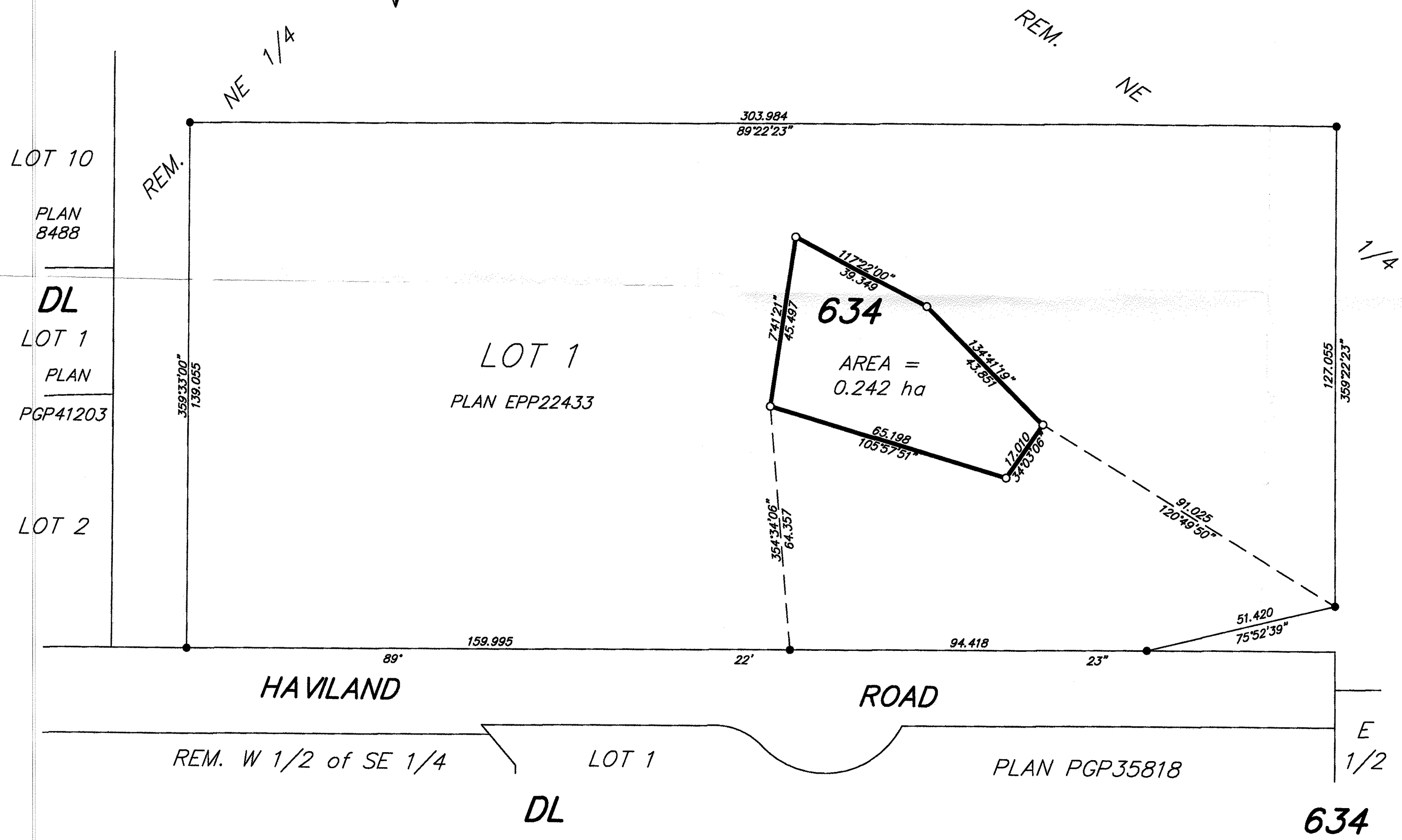
ALL DISTANCES ARE HORIZONTAL GROUND-LEVEL AND ARE SHOWN IN METRES AND DECIMALS THEREOF, UNLESS OTHERWISE INDICATED.



LEGEND

GRID BEARINGS ARE DERIVED FROM PREVIOUSLY INTEGRATED PLAN EPP22433.

- DENOTES STANDARD IRON POST FOUND
- DENOTES STANDARD IRON POST PLACED



THE FIELD SURVEY REPRESENTED BY THIS PLAN WAS COMPLETED BY DALE KEOWN, BCLS ON THE 12th DAY OF JULY, 2012.

THIS PLAN LIES WITHIN THE REGIONAL DISTRICT OF FRASER - FORT GEORGE.

McElhanney
 McElhanney Associates
 Land Surveying Ltd.
 Prince George, B.C.
 E-mail: pgmats@mcelhanney.com
 Ph: (250) 561-2229 Fax: (250) 563-1941

DL- 634	File No. - 5998-COV
---------	---------------------