

**PLAN OF SUBDIVISION OF PART OF THE NORTH EAST 1/4 OF DISTRICT LOT 634, CARIBOO DISTRICT, EXCEPT PARCEL A (D2212) AND PLANS 8488, 8956, 12915, 13121, 16233, 26295, PGP35818 AND BCP26911.**

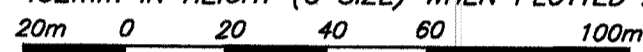
**PLAN EPP22433**

PURSUANT TO SECTION 67 OF THE LAND TITLE ACT.

BCGS 93G.087

THIS PLAN LIES WITHIN INTEGRATED SURVEY AREA No. 39, PRINCE GEORGE, NAD83 (CSRS)

THE INTENDED PLOT SIZE OF THIS PLAN IS 560mm IN WIDTH BY 432mm IN HEIGHT (C SIZE) WHEN PLOTTED AT A SCALE OF 1:1500



ALL DISTANCES ARE HORIZONTAL GROUND-LEVEL AND ARE SHOWN IN METRES AND DECIMALS THEREOF, UNLESS OTHERWISE INDICATED.



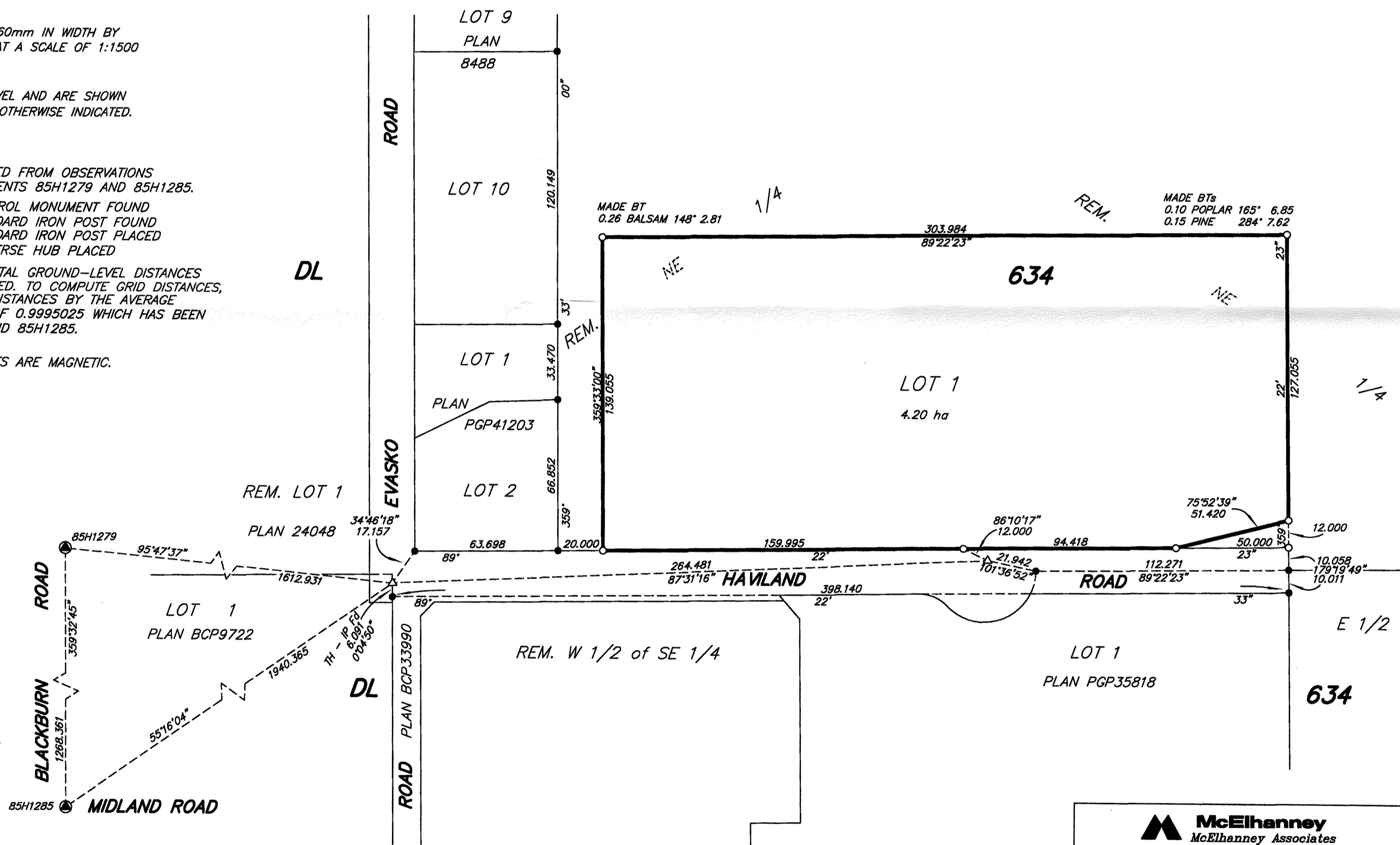
LEGEND

GRID BEARINGS ARE DERIVED FROM OBSERVATIONS BETWEEN CONTROL MONUMENTS 85H1279 AND 85H1285.

- DENOTES CONTROL MONUMENT FOUND
- DENOTES STANDARD IRON POST FOUND
- DENOTES STANDARD IRON POST PLACED
- △ DENOTES TRAVERSE HUB PLACED

THIS PLAN SHOWS HORIZONTAL GROUND-LEVEL DISTANCES UNLESS OTHERWISE SPECIFIED. TO COMPUTE GRID DISTANCES, MULTIPLY GROUND-LEVEL DISTANCES BY THE AVERAGE COMBINED SCALE FACTOR OF 0.9995025 WHICH HAS BEEN DERIVED FROM 85H1279 AND 85H1285.

BEARINGS TO BEARING TREES ARE MAGNETIC.



THIS PLAN LIES WITHIN THE JURISDICTION OF THE APPROVING OFFICER FOR THE CITY OF PRINCE GEORGE. CPG File: SD100378

THE FIELD SURVEY REPRESENTED BY THIS PLAN WAS COMPLETED BY DALE KEOWN, BCLS ON THE 21st DAY OF JUNE, 2012.

A COVENANT IN THE NAME OF THE CITY OF PRINCE GEORGE PURSUANT TO SECTION 219 IS A CONDITION OF APPROVAL FOR SUBDIVISION.

THIS PLAN LIES WITHIN THE REGIONAL DISTRICT OF FRASER - FORT GEORGE.

**McElhanney**  
 McElhanney Associates  
 Land Surveying Ltd.  
 Prince George, B.C.

E-mail: [pgmals@mcElhanney.com](mailto:pgmals@mcElhanney.com)  
Ph: (250) 561-2229 Fax: (250) 563-1941

DL- 634 File No. - 5998-S

CPG File: SD100378