

SUBDIVISION PLAN OF LOT 21, BLOCK K, DISTRICT LOT 777, CARIBOO DISTRICT, PLAN 5566.

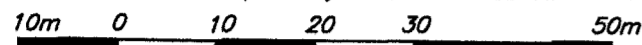
PLAN EPP22325

BCGS 93G.097

PURSUANT TO SECTION 67 OF THE LAND TITLE ACT.

THIS PLAN LIES WITHIN INTEGRATED SURVEY AREA No. 39, PRINCE GEORGE, NAD83 (CSRS).

THE INTENDED PLOT SIZE OF THIS PLAN IS 4.32mm IN WIDTH BY 560mm IN HEIGHT (C SIZE) WHEN PLOTTED AT A SCALE OF 1:750



ALL DISTANCES ARE SHOWN IN METRES AND DECIMALS THEREOF, UNLESS OTHERWISE INDICATED.

LEGEND

GRID BEARINGS ARE DERIVED FROM OBSERVATIONS BETWEEN GEODETIC CONTROL MONUMENTS 85H1330 AND 85H1139.

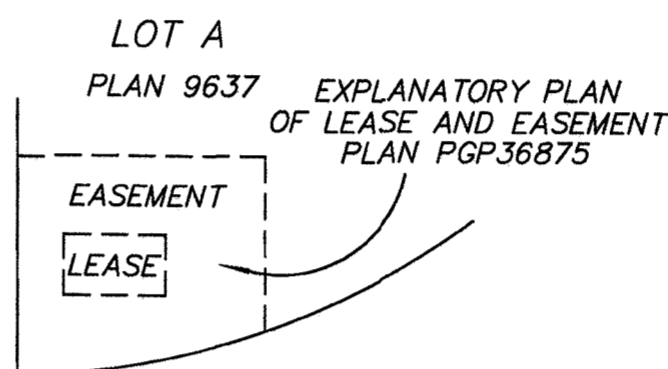
- DENOTES CONTROL MONUMENT FOUND
- DENOTES STANDARD IRON POST FOUND
- DENOTES STANDARD IRON POST PLACED
- DENOTES STANDARD LEAD PLUG PLACED
- DENOTES NON-STANDARD POST FOUND (ALUMINUM BOLT)
- PCL DENOTES PARCEL

THIS PLAN SHOWS HORIZONTAL GROUND-LEVEL DISTANCES UNLESS OTHERWISE SPECIFIED. TO COMPUTE GRID DISTANCES, MULTIPLY GROUND-LEVEL DISTANCES BY THE AVERAGE COMBINED FACTOR OF 0.9995155 WHICH HAS BEEN DERIVED FROM 85H1330 AND 85H1139.

NOTE: THIS PLAN SHOWS ONE OR MORE WITNESS POSTS WHICH ARE NOT SET ON THE TRUE CORNER(S).

DL
BLOCK 333
PLAN 1268

STREET



STREET

343
LOT A
PLAN BCP33260

20th

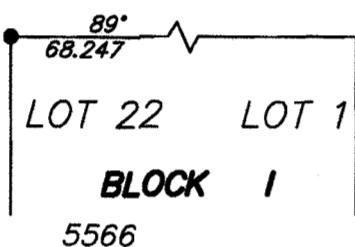
DL 343
DL 777

DL 343
DL 932

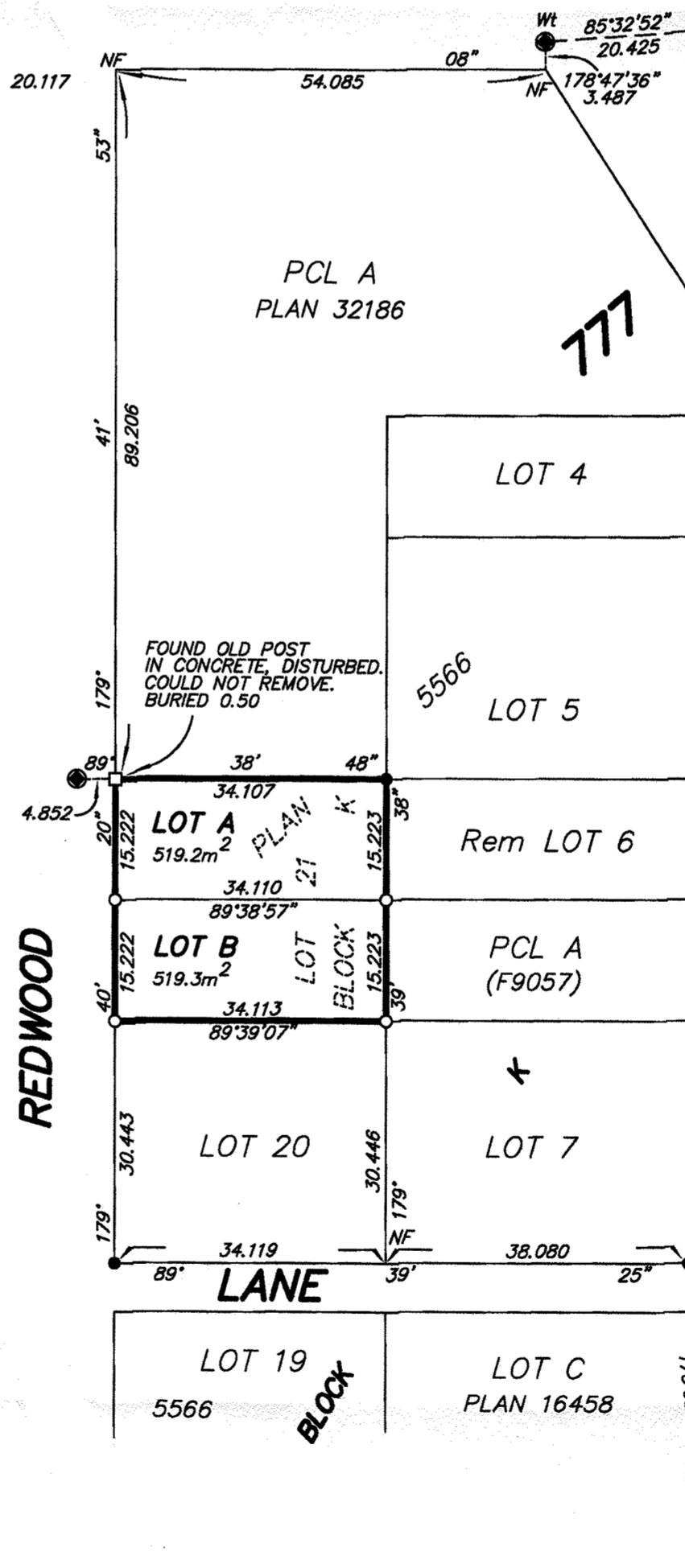
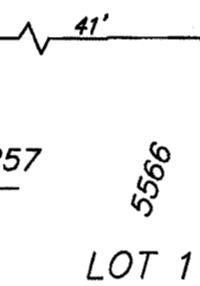
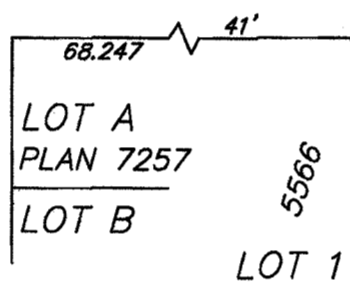
AVENUE

PCL A
(H24600)
BLOCK H
PLAN

TAMARACK STREET



SPRUCE STREET



VICTORIA

932

LOT A
PLAN 20192

DL

PORTER AVENUE

LOT A
PLAN 22263

THIS PLAN LIES WITHIN THE JURISDICTION OF THE APPROVING OFFICER FOR THE CITY OF PRINCE GEORGE. CPG FILE NO.: SD100393

THE FIELD SURVEY REPRESENTED BY THIS PLAN WAS COMPLETED ON THE 27th DAY OF JUNE, 2012. DARREN KENT, BCLS

THIS PLAN LIES WITHIN THE REGIONAL DISTRICT OF FRASER - FORT GEORGE.

McElhanney
McElhanney Associates
Land Surveying Ltd.
Prince George, B.C.

E-mail: pgm@mcElhanney.com
Ph: (250) 561-2229 Fax: (250) 563-1941

DL- 777

File No. - 6004-S

CPG FILE NO.: SD100393