

EXPLANATORY PLAN OF EASEMENT FOR PARTY WALL AGREEMENT OVER A PORTION OF LOTS A AND B, DISTRICT LOT 2014, CARIBOO DISTRICT, PLAN EPP22082.

PLAN EPP22083

BCGS 93G.087

Pursuant to Section 99(1)(e)
of the Land Title Act.

THIS PLAN LIES WITHIN INTEGRATED SURVEY
AREA No. 39, PRINCE GEORGE, NAD83 (CSRS)

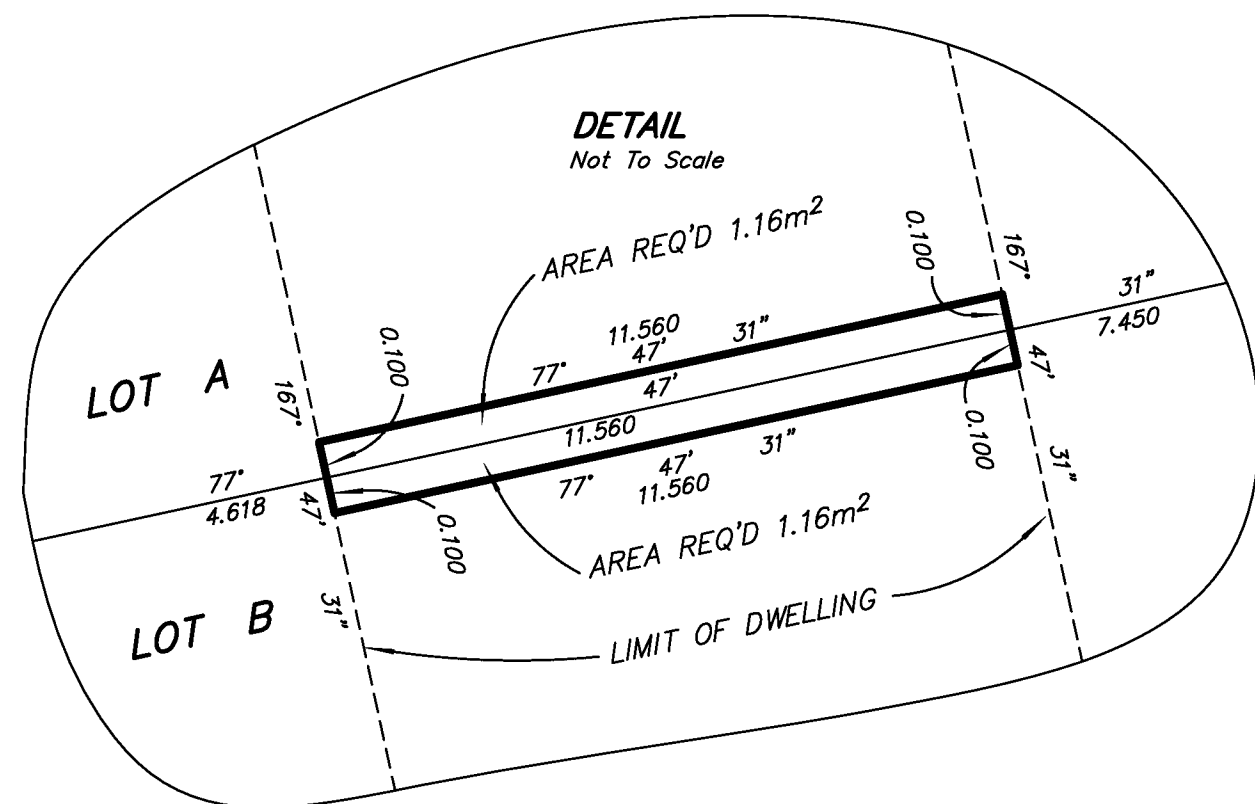
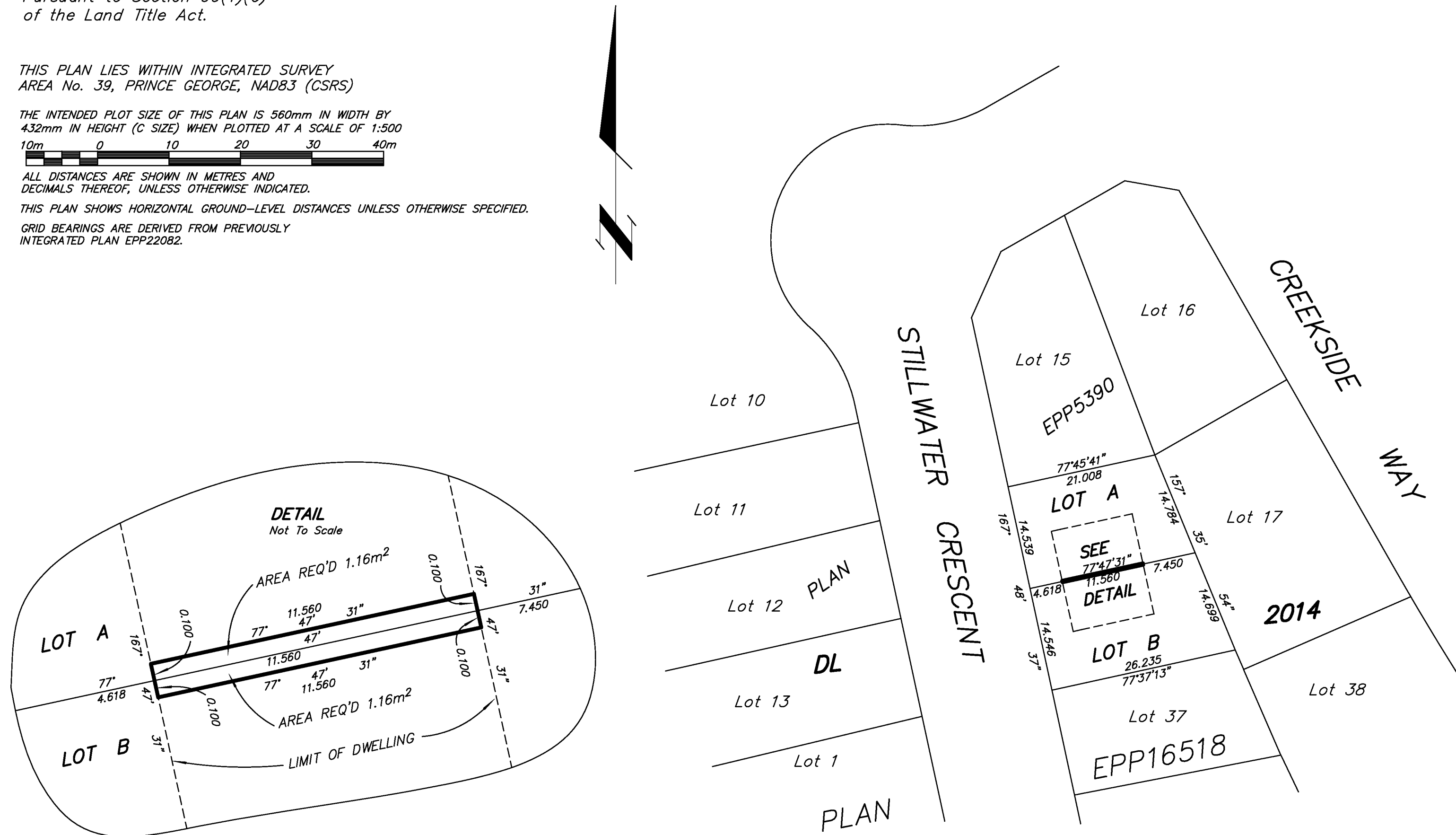
THE INTENDED PLOT SIZE OF THIS PLAN IS 560mm IN WIDTH BY
432mm IN HEIGHT (C SIZE) WHEN PLOTTED AT A SCALE OF 1:500



ALL DISTANCES ARE SHOWN IN METRES AND
DECIMALS THEREOF, UNLESS OTHERWISE INDICATED.

THIS PLAN SHOWS HORIZONTAL GROUND-LEVEL DISTANCES UNLESS OTHERWISE SPECIFIED.

GRID BEARINGS ARE DERIVED FROM PREVIOUSLY
INTEGRATED PLAN EPP22082.



BOOK OF REFERENCE	
DESCRIPTION	AREA
LOT A, PLAN EPP22082	1.16m ²
LOT B, PLAN EPP22082	1.16m ²

THIS PLAN LIES WITHIN THE JURISDICTION OF THE
APPROVING OFFICER FOR THE CITY OF PRINCE GEORGE.
CPG File: SD100389

THIS PLAN IS BASED ON THE FOLLOWING LAND TITLE
AND SURVEY AUTHORITY OF BC RECORDS: EPP22082.
DALE KEOWN, BCLS
29th DAY OF JUNE, 2012

THIS PLAN LIES WITHIN THE REGIONAL DISTRICT OF FRASER - FORT GEORGE.

McElhanney
McElhanney Associates
Land Surveying Ltd.
Prince George, B.C.

E-mail: pgmalls@mcelhanney.com
Ph: (250) 561-2229 Fax: (250) 563-1941

DL- 2014 File No. - 5883-14-PW

JULY 5, 2012