

PLAN EPP22082

PLAN OF SUBDIVISION OF LOT 14,  
DISTRICT LOT 2014, CARIBOO DISTRICT,  
PLAN EPP5390.

BCGS 93G.087

Pursuant to Section 67  
of the Land Title Act.

THIS PLAN LIES WITHIN INTEGRATED SURVEY  
AREA No. 39, PRINCE GEORGE, NAD83 (CSRS)

THE INTENDED PLOT SIZE OF THIS PLAN IS 560mm IN WIDTH BY  
432mm IN HEIGHT (C SIZE) WHEN PLOTTED AT A SCALE OF 1:500



ALL DISTANCES ARE SHOWN IN METRES AND  
DECIMALS THEREOF, UNLESS OTHERWISE INDICATED.

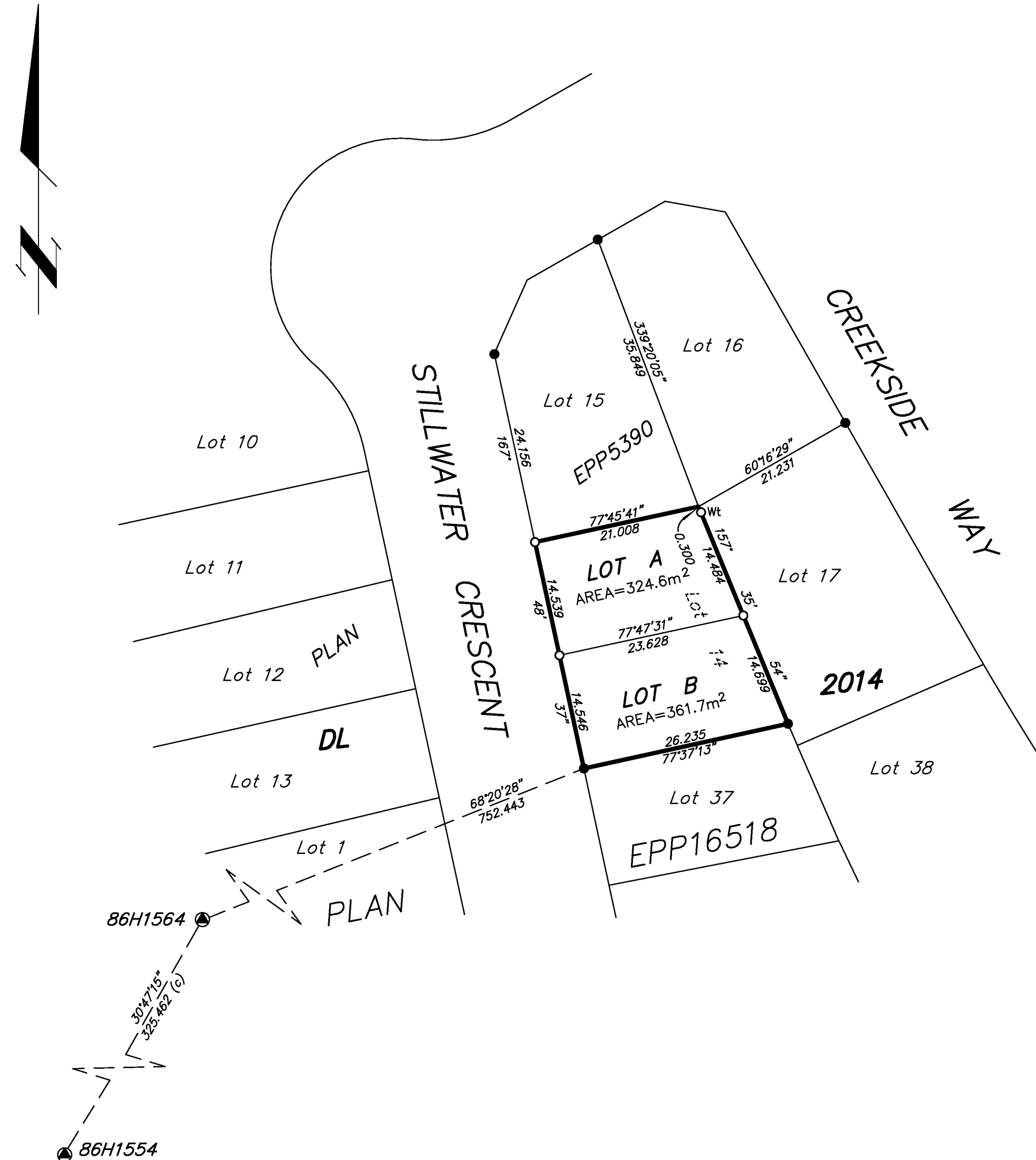
LEGEND

GRID BEARINGS ARE DERIVED FROM OBSERVATIONS BETWEEN  
GEODETIC CONTROL MONUMENTS 86H1554 AND 86H1564.

- DENOTES CONTROL MONUMENT
- DENOTES STANDARD IRON POST FOUND
- DENOTES STANDARD IRON POST PLACED

THIS PLAN SHOWS HORIZONTAL GROUND-LEVEL DISTANCES UNLESS OTHERWISE  
SPECIFIED. TO COMPUTE GRID DISTANCES, MULTIPLY GROUND-LEVEL DISTANCES BY THE  
AVERAGE COMBINED FACTOR OF 0.9995086 WHICH HAS BEEN DERIVED FROM 86H1554  
AND 86H1564.

THIS PLAN SHOWS ONE OR MORE WITNESS POSTS  
WHICH ARE NOT SET ON THE TRUE CORNER(S).



THIS PLAN LIES WITHIN THE JURISDICTION OF THE  
APPROVING OFFICER FOR THE CITY OF PRINCE GEORGE.  
CPG File: SD100389

THE FIELD SURVEY REPRESENTED BY THIS PLAN  
WAS COMPLETED ON THE 12th DAY OF JUNE, 2012.  
DALE KEOWN, BCLS

THIS PLAN LIES WITHIN THE REGIONAL DISTRICT OF FRASER - FORT GEORGE.

**McElhanney**  
McElhanney Associates  
Land Surveying Ltd.  
Prince George, B.C.

E-mail: pgmals@mcelhanney.com  
Ph: (250) 561-2229 Fax: (250) 563-1941

DL- 2014	File No. - 5883-14-S
----------	----------------------

JULY 5, 2012