

REFERENCE PLAN OF EASEMENT WITHIN LOT 3, DISTRICT LOT 936, CARIBOO DISTRICT, PLAN EPP21547.

PLAN EPP21548

BCGS 93G.097

PURSUANT TO SECTION 99(1)(e) OF THE LAND TITLE ACT.

THIS PLAN LIES WITHIN INTEGRATED SURVEY
AREA No. 39, PRINCE GEORGE, NAD83 (CSRS)

THE INTENDED PLOT SIZE OF THIS PLAN IS 560mm IN WIDTH BY
432mm IN HEIGHT (C SIZE) WHEN PLOTTED AT A SCALE OF 1:1000



ALL DISTANCES ARE SHOWN IN METRES AND
DECIMALS THEREOF, UNLESS OTHERWISE INDICATED.

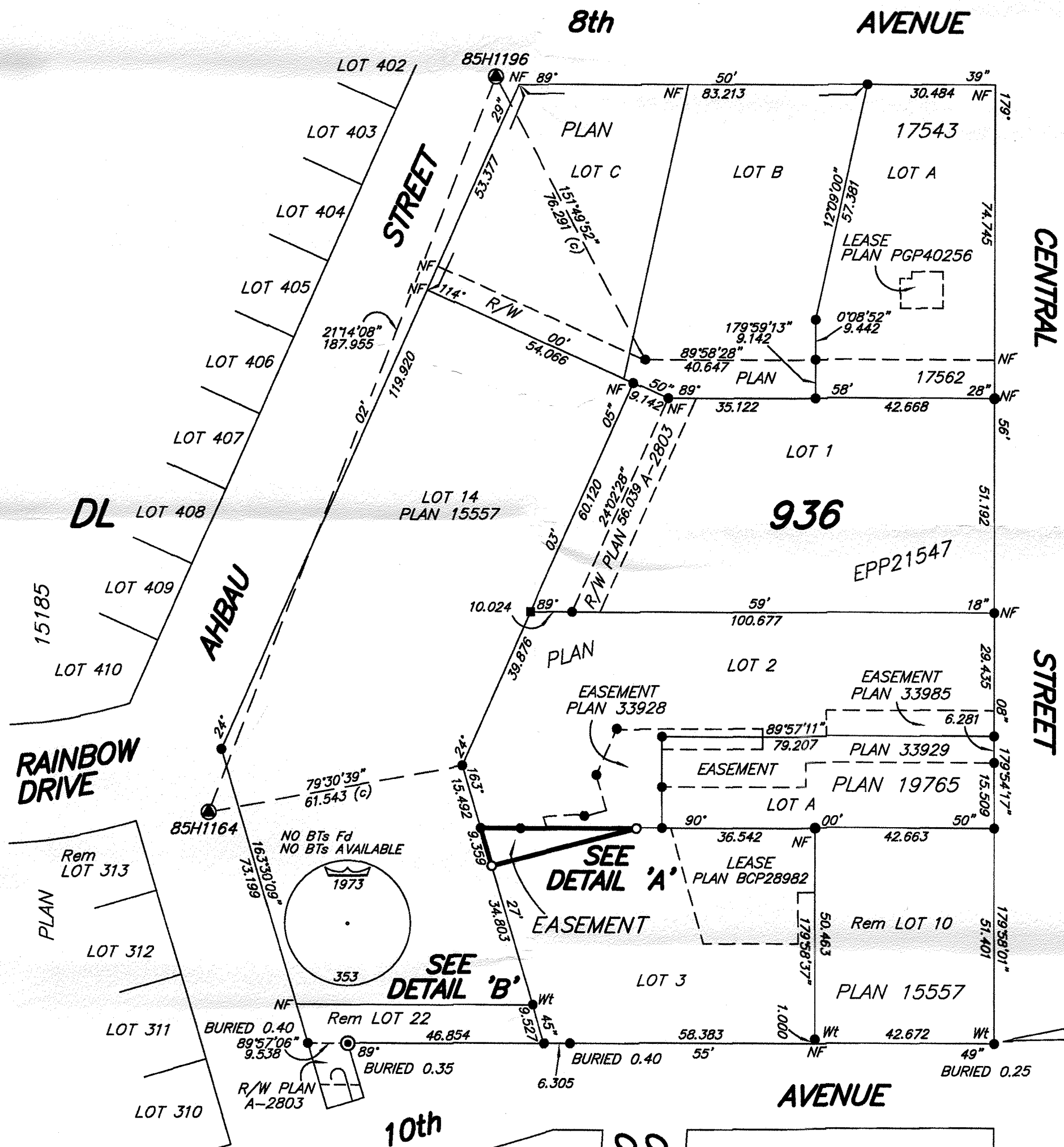
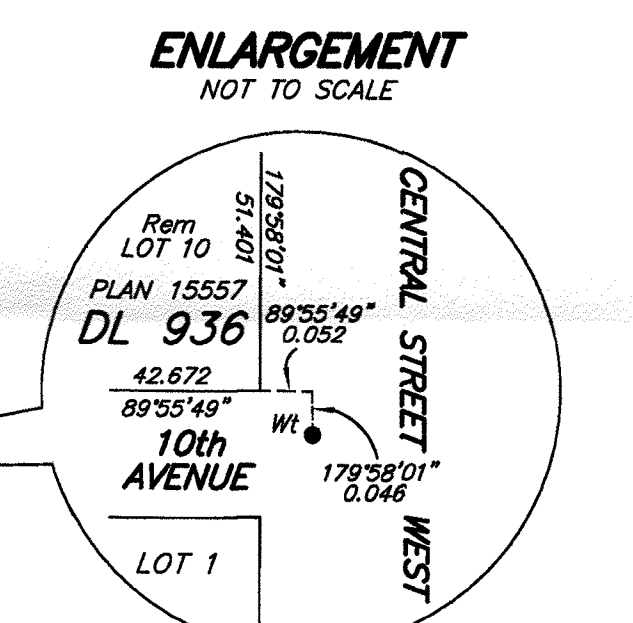
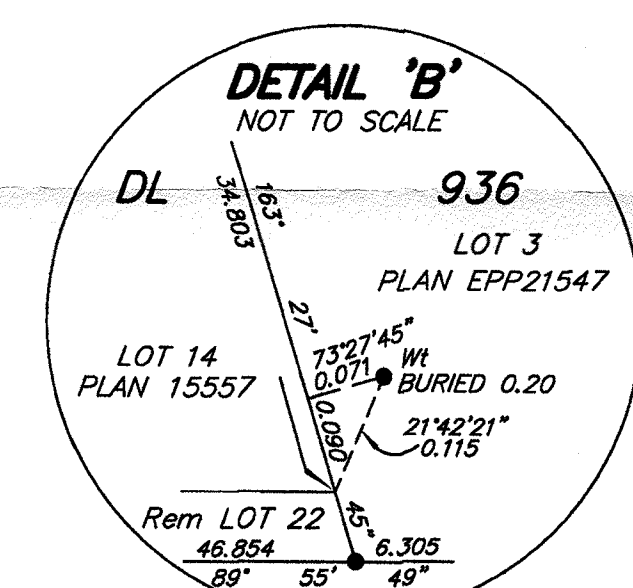
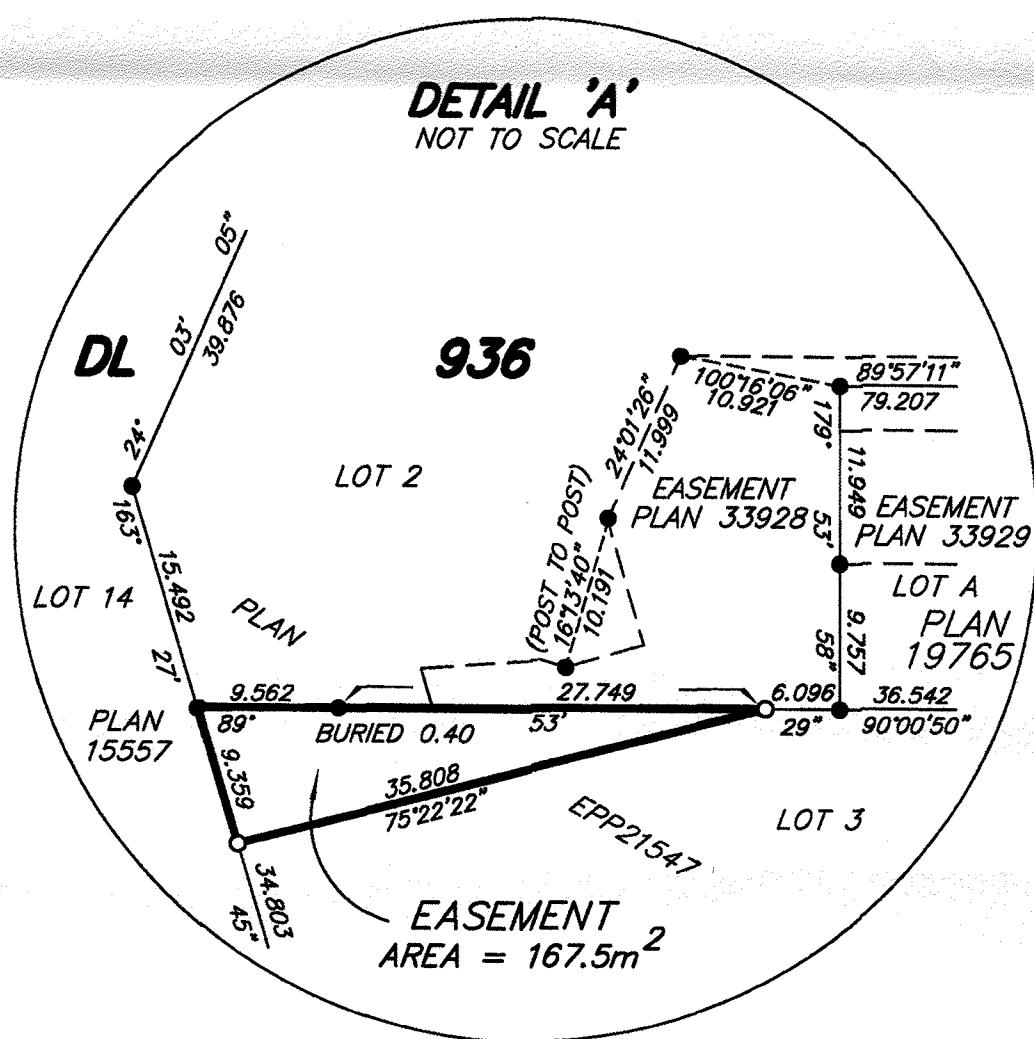
LEGEND

GRID BEARINGS ARE DERIVED FROM OBSERVATIONS BETWEEN
GEODETIC CONTROL MONUMENTS 85H1164 AND 85H1196.

- ⊙ DENOTES STANDARD CONCRETE POST FOUND
- ⊙ DENOTES CONTROL MONUMENT FOUND
- DENOTES LEAD PLUG FOUND
- DENOTES STANDARD IRON POST FOUND
- DENOTES STANDARD IRON POST PLACED
- PCL DENOTES PARCEL

THIS PLAN SHOWS HORIZONTAL GROUND-LEVEL DISTANCES UNLESS
OTHERWISE SPECIFIED. TO COMPUTE GRID DISTANCES, MULTIPLY
GROUND-LEVEL DISTANCES BY THE AVERAGE COMBINED FACTOR OF
0.9995105 WHICH HAS BEEN DERIVED FROM 85H1164 AND 85H1196.

NOTE: THIS PLAN SHOWS ONE OR MORE WITNESS POSTS WHICH ARE
NOT SET ON THE TRUE CORNER(S).



THE FIELD SURVEY REPRESENTED BY THIS PLAN
WAS COMPLETED ON THE 28th DAY OF JUNE, 2012.
DARREN KENT, BCLS

THIS PLAN LIES WITHIN THE REGIONAL DISTRICT
OF FRASER - FORT GEORGE.

PART Rem LOT 22
PLAN 15557

McElhanney
McElhanney Associates
Land Surveying Ltd.
Prince George, B.C.
E-mail: pgmats@mcelhanney.com
Ph: (250) 561-2229 Fax: (250) 563-1941

DL - 936	File No. - 5994-E
----------	-------------------