

# SUBDIVISION PLAN OF LOT 11, PLAN 15557, EXCEPT PLAN 19765; LOT 12, PLAN 15557; PART OF LOT 22, PLAN 15557, EXCEPT PLANS 21027 AND 27829; AND LOT A, PLAN 20921, ALL IN DL 936, CARIBOO DISTRICT.

## PLAN EPP21547

BCGS 93G.097

PURSUANT TO SECTION 67 OF THE LAND TITLE ACT.

THIS PLAN LIES WITHIN INTEGRATED SURVEY  
AREA No. 39, PRINCE GEORGE, NADB3 (CSRS)

THE INTENDED PLOT SIZE OF THIS PLAN IS 560mm IN WIDTH BY  
432mm IN HEIGHT (C SIZE) WHEN PLOTTED AT A SCALE OF 1:1000



ALL DISTANCES ARE SHOWN IN METRES AND  
DECIMALS THEREOF, UNLESS OTHERWISE INDICATED.

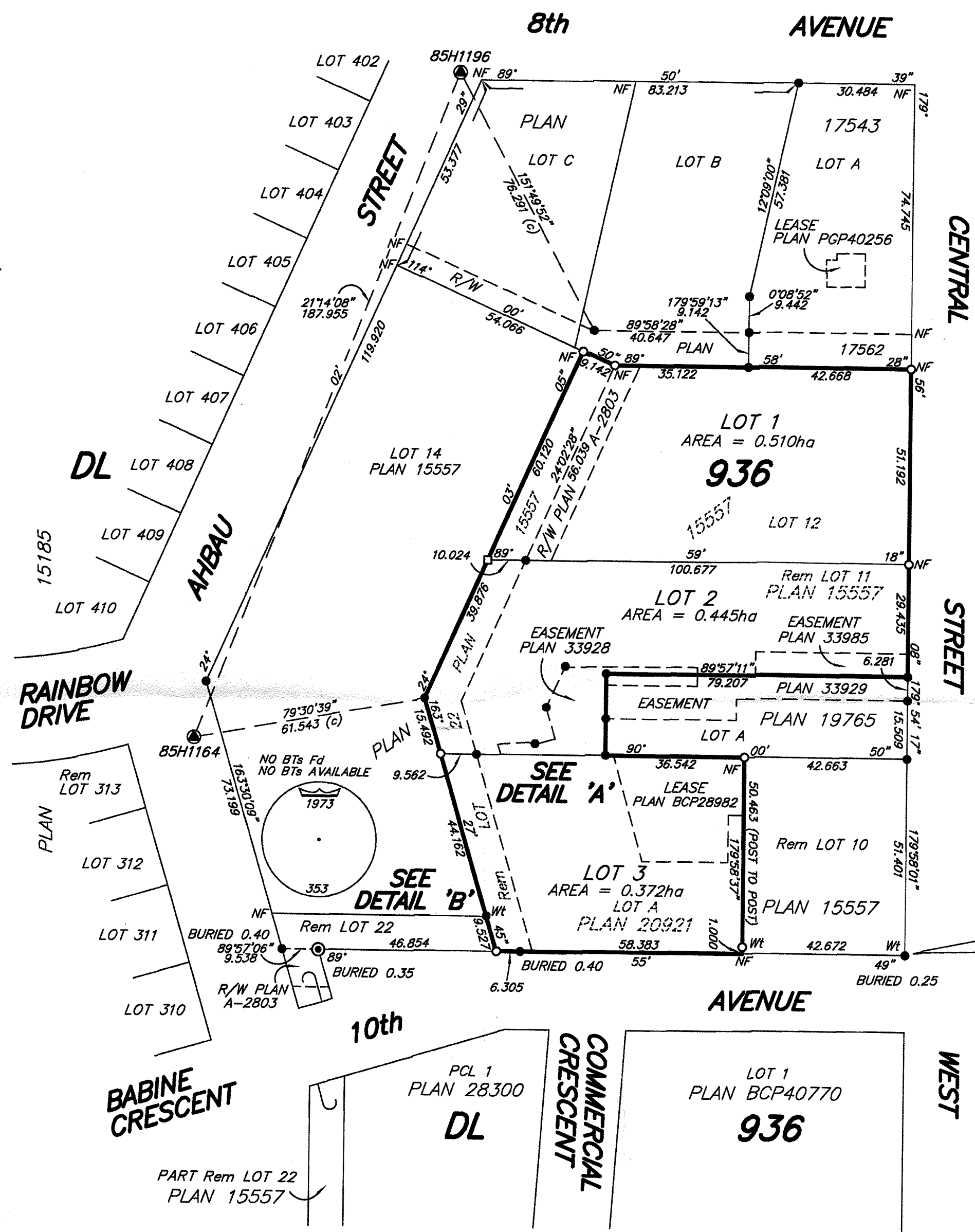
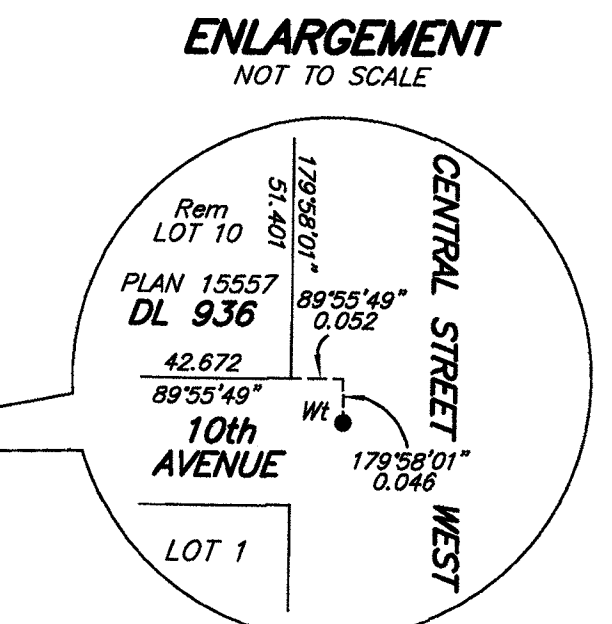
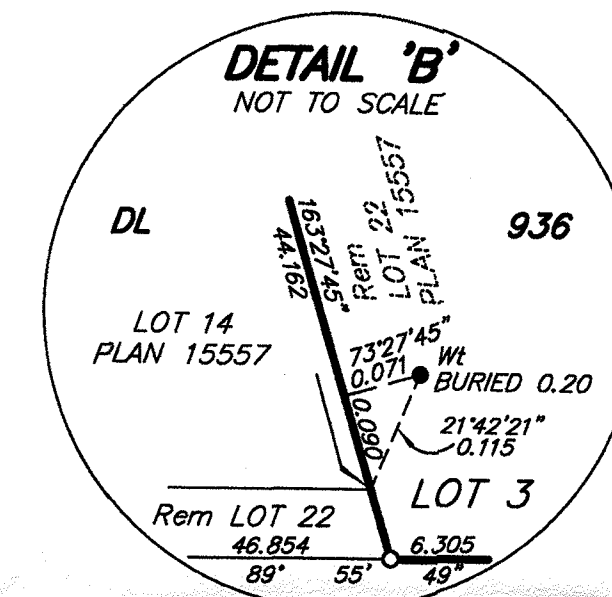
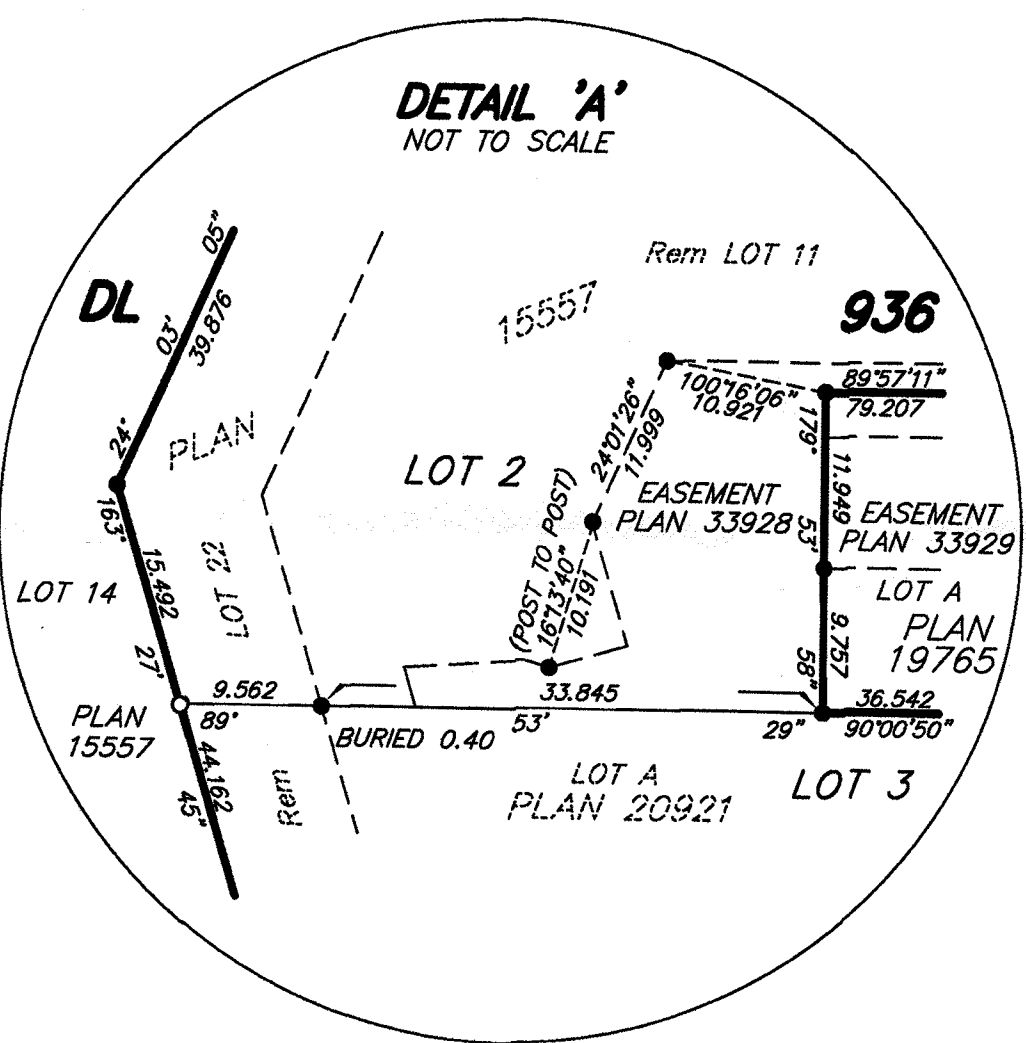
### LEGEND

GRID BEARINGS ARE DERIVED FROM OBSERVATIONS BETWEEN  
GEODETIC CONTROL MONUMENTS 85H1164 AND 85H1196.

- ⊙ DENOTES STANDARD CONCRETE POST FOUND
- ⊠ DENOTES CONTROL MONUMENT FOUND
- ⊡ DENOTES LEAD PLUG PLACED
- ⊙ DENOTES STANDARD IRON POST FOUND
- ⊙ DENOTES STANDARD IRON POST PLACED
- PCL DENOTES PARCEL

THIS PLAN SHOWS HORIZONTAL GROUND-LEVEL DISTANCES UNLESS  
OTHERWISE SPECIFIED. TO COMPUTE GRID DISTANCES, MULTIPLY  
GROUND-LEVEL DISTANCES BY THE AVERAGE COMBINED FACTOR OF  
0.9995105 WHICH HAS BEEN DERIVED FROM 85H1164 AND 85H1196.

NOTE: THIS PLAN SHOWS ONE OR MORE WITNESS POSTS WHICH ARE  
NOT SET ON THE TRUE CORNER(S).



THIS PLAN LIES WITHIN THE JURISDICTION OF THE APPROVING  
OFFICER FOR THE MINISTRY OF TRANSPORTATION AND INFRASTRUCTURE.

THIS PLAN LIES WITHIN THE JURISDICTION OF THE  
APPROVING OFFICER FOR THE CITY OF PRINCE GEORGE.  
CPG FILE NO. : SD100361

THE FIELD SURVEY REPRESENTED BY THIS PLAN  
WAS COMPLETED ON THE 28th DAY OF JUNE, 2012.  
DARREN KENT, BCLS

THIS PLAN LIES WITHIN THE REGIONAL DISTRICT  
OF FRASER - FORT GEORGE.

**McElhanney**  
McElhanney Associates  
Land Surveying Ltd.  
Prince George, B.C.  
E-mail: pgmals@mcelhanney.com  
Ph: (250) 561-2229 Fax: (250) 563-1941

DL- 936	File No. - 5994-S
CPG FILE NO. : SD100361	