

# REFERENCE PLAN OF PART OF DISTRICT LOT 5742, CARIBOO DISTRICT AND PART OF THAT PART OF THE SOUTH 1/2 OF DISTRICT LOT 1566, CARIBOO DISTRICT AS SHOWN ON PLAN A227.

## PLAN EPP20849

PURSUANT TO SECTION 47 OF THE BRITISH COLUMBIA RAILWAY ACT, CHAPTER 36, REVISED STATUTES OF 1996.

BCGS 93G.087

THE INTENDED PLOT SIZE OF THIS PLAN IS 560mm IN WIDTH BY 864mm IN HEIGHT (D SIZE) WHEN PLOTTED AT A SCALE OF 1:2000



ALL DISTANCES ARE HORIZONTAL GROUND-LEVEL AND ARE SHOWN IN METRES AND DECIMALS THEREOF, UNLESS OTHERWISE INDICATED.

### LEGEND

- ⊙ Standard Capped Post Found
- ⊗ Standard Capped Post Placed
- Standard Iron Post Found
- Standard Iron Post Placed
- △ Traverse Hub Placed

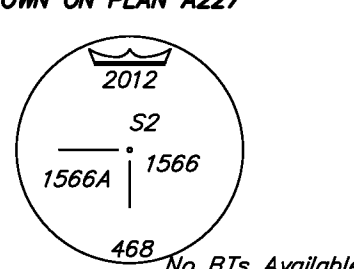
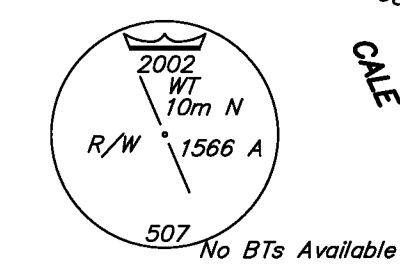
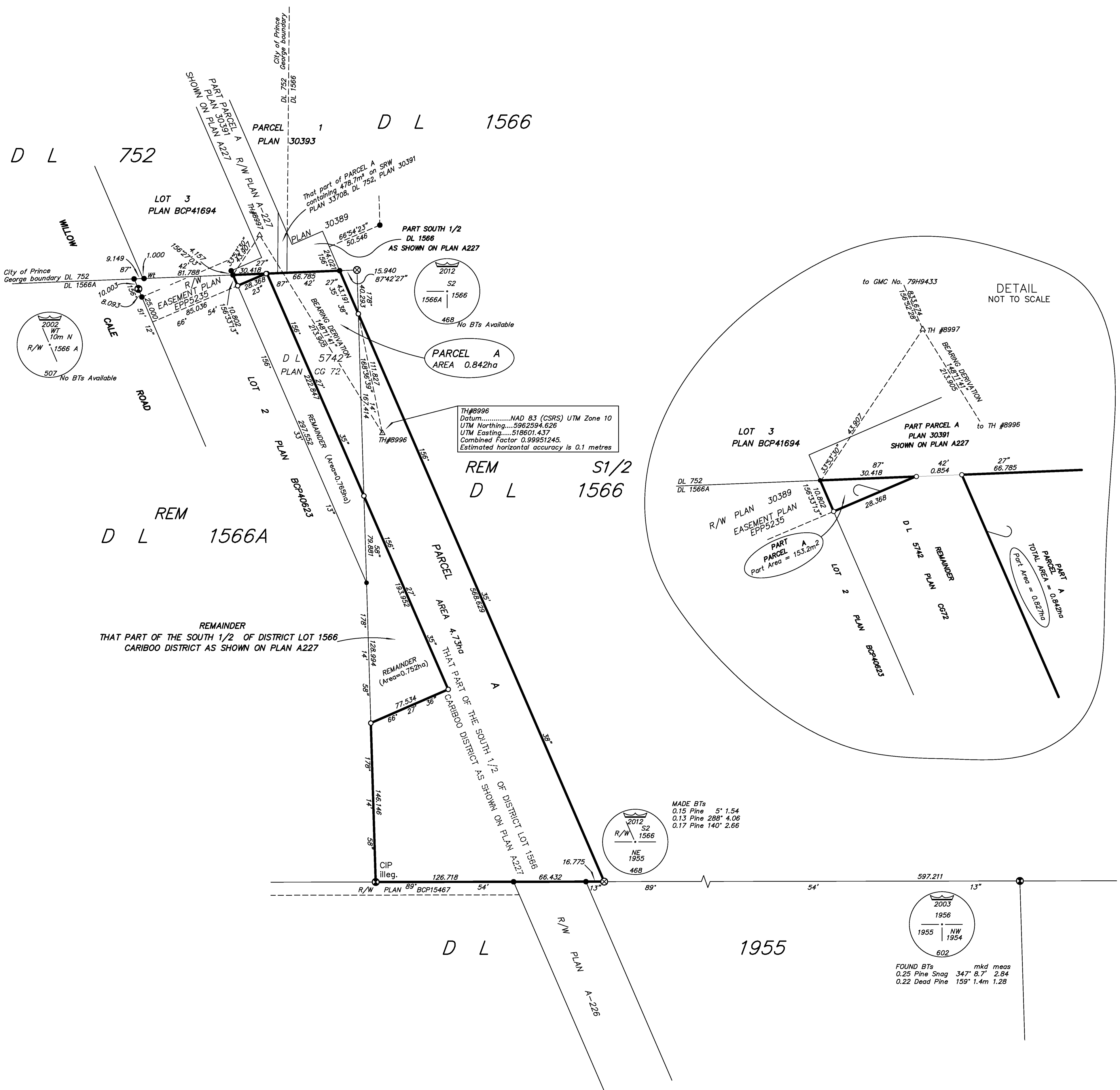
BEARINGS TO BEARING TREES ARE MAGNETIC.

THIS PLAN SHOWS ONE OR MORE WITNESS POSTS WHICH ARE NOT SET ON THE TRUE CORNER(S).

THE UTM COORDINATES AND ESTIMATED HORIZONTAL POSITIONAL ACCURACY ACHIEVED ARE DERIVED FROM DUAL FREQUENCY OBSERVATIONS TO GMC No. 79H9433 (PRINCE GEORGE ISA #39).

THIS PLAN SHOWS HORIZONTAL GROUND-LEVEL DISTANCES UNLESS OTHERWISE SPECIFIED. TO COMPUTE GRID DISTANCES, MULTIPLY GROUND-LEVEL DISTANCES BY THE AVERAGE COMBINED FACTOR OF 0.99951245. THE AVERAGE COMBINED FACTOR HAS BEEN DETERMINED BASED ON AN ELLIPSOIDAL ELEVATION OF 600.294 METRES.

GRID BEARINGS ARE DERIVED FROM DIFFERENTIAL CARRIER PHASE GPS OBSERVATIONS AND ARE REFERRED TO THE CENTRAL MERIDIAN OF UTM ZONE 10. TO OBTAIN LOCAL ASTRONOMIC BEARINGS REFERRED TO THE MERIDIAN THROUGH TH#8996, ADD 0°13'41".



TH#8996  
 Datum.....NAD 83 (CSRS) UTM Zone 10  
 UTM Northing.....5962594.626  
 UTM Easting.....518601.437  
 Combined Factor 0.99951245.  
 Estimated horizontal accuracy is 0.1 metres

MADE Bts  
 0.15 Pine 5° 1.54  
 0.13 Pine 288° 4.06  
 0.17 Pine 140° 2.66

FOUND Bts mkd meas  
 0.25 Pine Snag 347° 8.7' 2.84  
 0.22 Dead Pine 159° 1.4m 1.28

THE FIELD SURVEY REPRESENTED BY THIS PLAN WAS COMPLETED ON THE 7th DAY OF MAY, 2012. DALE KEOWN, BCLS

THIS PLAN LIES WITHIN THE REGIONAL DISTRICT OF FRASER - FORT GEORGE.

**McElhanney**  
 McElhanney Associates  
 Land Surveying Ltd.  
 Prince George, B.C.  
 E-mail: pgm@mcElhanney.com  
 Ph: (250) 561-2229 Fax: (250) 563-1941

DL- 1566	File No. - 5996
----------	-----------------