

EXPLANATORY PLAN OF EASEMENT OVER PART OF LOT 9, DISTRICT LOTS 1600 AND 2003, CARIBOO DISTRICT PLAN BCP42930.

PLAN EPP20787

BCGS 93G.086

PURSUANT TO SECTION 99(1)(e) OF THE LAND TITLE ACT.



THIS PLAN LIES WITHIN INTEGRATED SURVEY AREA No. 39, PRINCE GEORGE, NAD83 (CSRS).

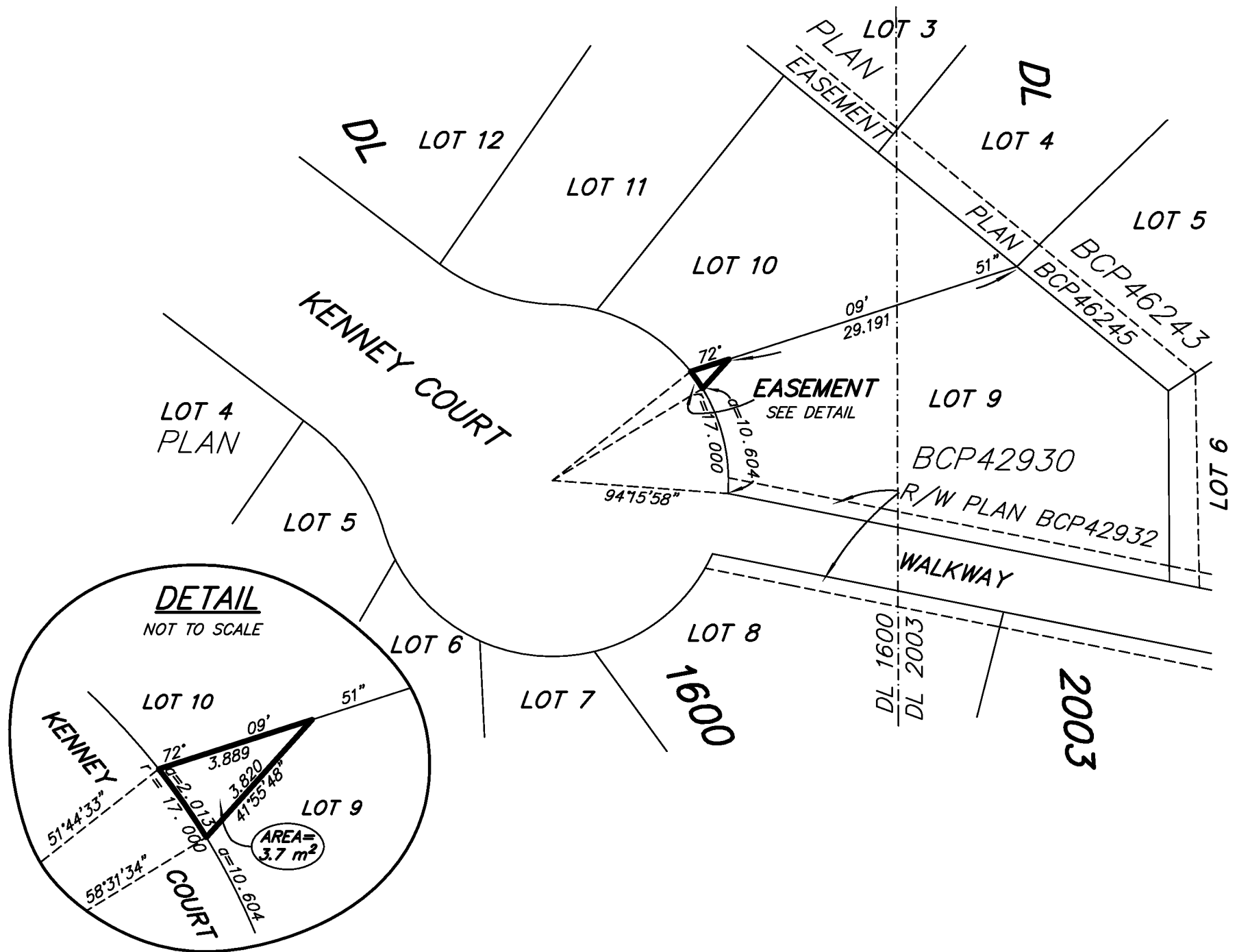
THE INTENDED PLOT SIZE OF THIS PLAN IS 280mm IN WIDTH BY 432mm IN HEIGHT (B SIZE) WHEN PLOTTED AT A SCALE OF 1:500



ALL DISTANCES ARE HORIZONTAL GROUND-LEVEL AND ARE SHOWN IN METRES AND DECIMALS THEREOF, UNLESS OTHERWISE INDICATED.

GRID BEARINGS ARE DERIVED FROM PREVIOUSLY INTEGRATED PLAN BCB42930.

THIS PLAN SHOWS HORIZONTAL GROUND-LEVEL DISTANCES UNLESS OTHERWISE SPECIFIED. TO COMPUTE GRID DISTANCES, MULTIPLY GROUND-LEVEL DISTANCES BY THE AVERAGE COMBINED FACTOR OF 0.999500 WHICH HAS BEEN DERIVED FROM PREVIOUSLY INTEGRATED PLAN BCP42930.



THIS PLAN IS BASED ON THE FOLLOWING LAND TITLE AND SURVEY AUTHORITY OF BC RECORDS:
PLAN BCP42930 AND PLAN BCP46243
DALE KEOWN, BCLS

THIS PLAN LIES WITHIN THE REGIONAL DISTRICT OF FRASER - FORT GEORGE.

McElhanney
McElhanney Associates
Land Surveying Ltd.
Prince George, B.C.

E-mail: pgmats@mcelhanney.com
Ph: (250) 561-2229 Fax: (250) 563-1941

DL- 1600 AND 2003

File No. - 6008-0