

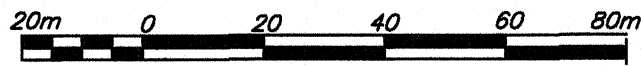
**PLAN OF SUBDIVISION OF LOTS 3 AND 4,
DISTRICT LOT 485, CARIBOO DISTRICT, PLAN BCP38207.**

PLAN EPP20645

BCGS 93G.087

THIS PLAN LIES WITHIN INTEGRATED SURVEY
AREA No. 39, PRINCE GEORGE, NAD83 (CSRS)

THE INTENDED PLOT SIZE OF THIS PLAN IS 432mm IN WIDTH BY
560mm IN HEIGHT (C SIZE) WHEN PLOTTED AT A SCALE OF 1:1250



ALL DISTANCES ARE SHOWN IN METRES AND
DECIMALS THEREOF, UNLESS OTHERWISE INDICATED.

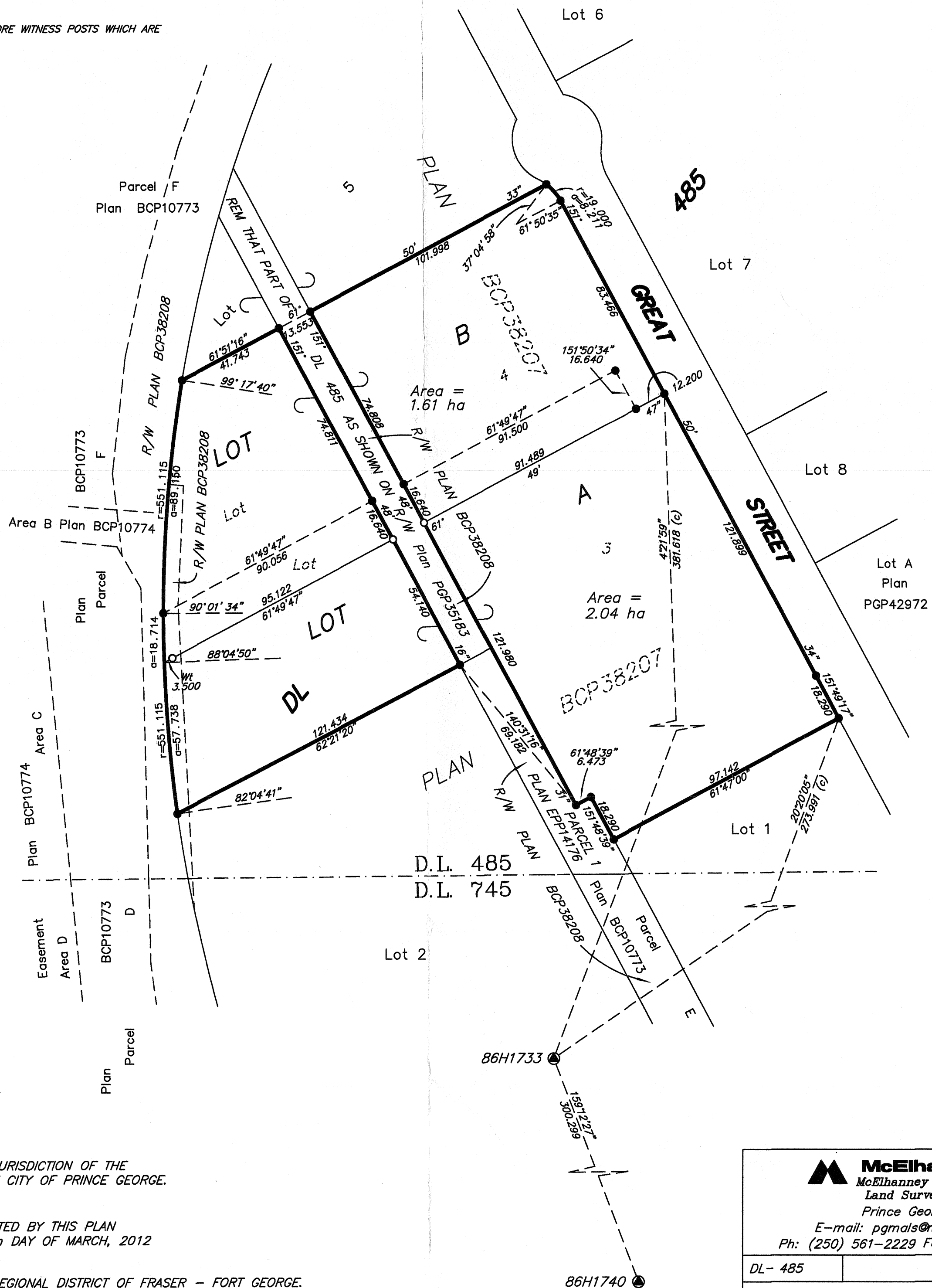
LEGEND

GRID BEARINGS ARE DERIVED FROM OBSERVATIONS
BETWEEN CONTROL MONUMENTS 86H1733 AND 86H1740.

- DENOTES CONTROL MONUMENT FOUND
- DENOTES STANDARD IRON POST FOUND
- DENOTES STANDARD IRON POST PLACED

THIS PLAN SHOWS HORIZONTAL GROUND-LEVEL DISTANCES UNLESS OTHERWISE
SPECIFIED. TO COMPUTE GRID DISTANCES, MULTIPLY GROUND-LEVEL DISTANCES
BY THE AVERAGE COMBINED FACTOR OF 0.9995130 WHICH HAS BEEN DERIVED
FROM 86H1733 AND 86H1740.

NOTE: THIS PLAN SHOWS ONE OR MORE WITNESS POSTS WHICH ARE
NOT SET ON THE TRUE CORNER(S).



THIS PLAN LIES WITHIN THE JURISDICTION OF THE
APPROVING OFFICER FOR THE CITY OF PRINCE GEORGE.
CPG FILE: SD100373

THE FIELD SURVEY REPRESENTED BY THIS PLAN
WAS COMPLETED ON THE 28th DAY OF MARCH, 2012
DALE KEOWN, BCLS

THIS PLAN LIES WITHIN THE REGIONAL DISTRICT OF FRASER - FORT GEORGE.

McElhanney
McElhanney Associates
Land Surveying Ltd.
Prince George, B.C.
E-mail: pgmals@mcElhanney.com
Ph: (250) 561-2229 Fax: (250) 563-1941

| | |
|--------------------|-------------------|
| DL- 485 | File No. - 5961-S |
| CPG FILE: SD100373 | |