

**SUBDIVISION PLAN OF LOTS 29, 30 AND 31,  
BLOCK 121, DL 343, CARIBOO DISTRICT, PLAN 1268.**

**PLAN EPP20327**  
SD100360

BCGS 93G.097

THIS PLAN LIES WITHIN INTEGRATED SURVEY  
AREA No. 39, PRINCE GEORGE, MAD83 (CSRS)

THE INTENDED PLOT SIZE OF THIS PLAN IS 432mm IN WIDTH BY  
560mm IN HEIGHT (C SIZE) WHEN PLOTTED AT A SCALE OF 1:1000

ALL DISTANCES ARE SHOWN IN METRES AND  
DECIMALS THEREOF, UNLESS OTHERWISE INDICATED.

**LEGEND**

GRID BEARINGS ARE DERIVED FROM OBSERVATIONS BETWEEN  
GEODETIC CONTROL MONUMENTS B5H1059 AND B5H1067.

- DENOTES STANDARD ROCK POST FOUND
- DENOTES CONTROL MONUMENT FOUND
- DENOTES STANDARD IRON POST FOUND
- DENOTES STANDARD IRON POST PLACED
- PCL DENOTES PARCEL

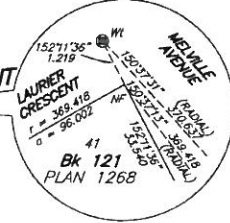
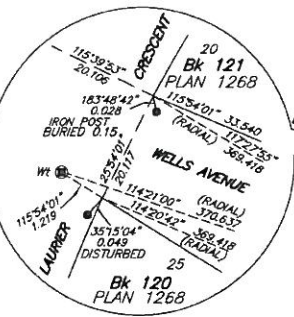
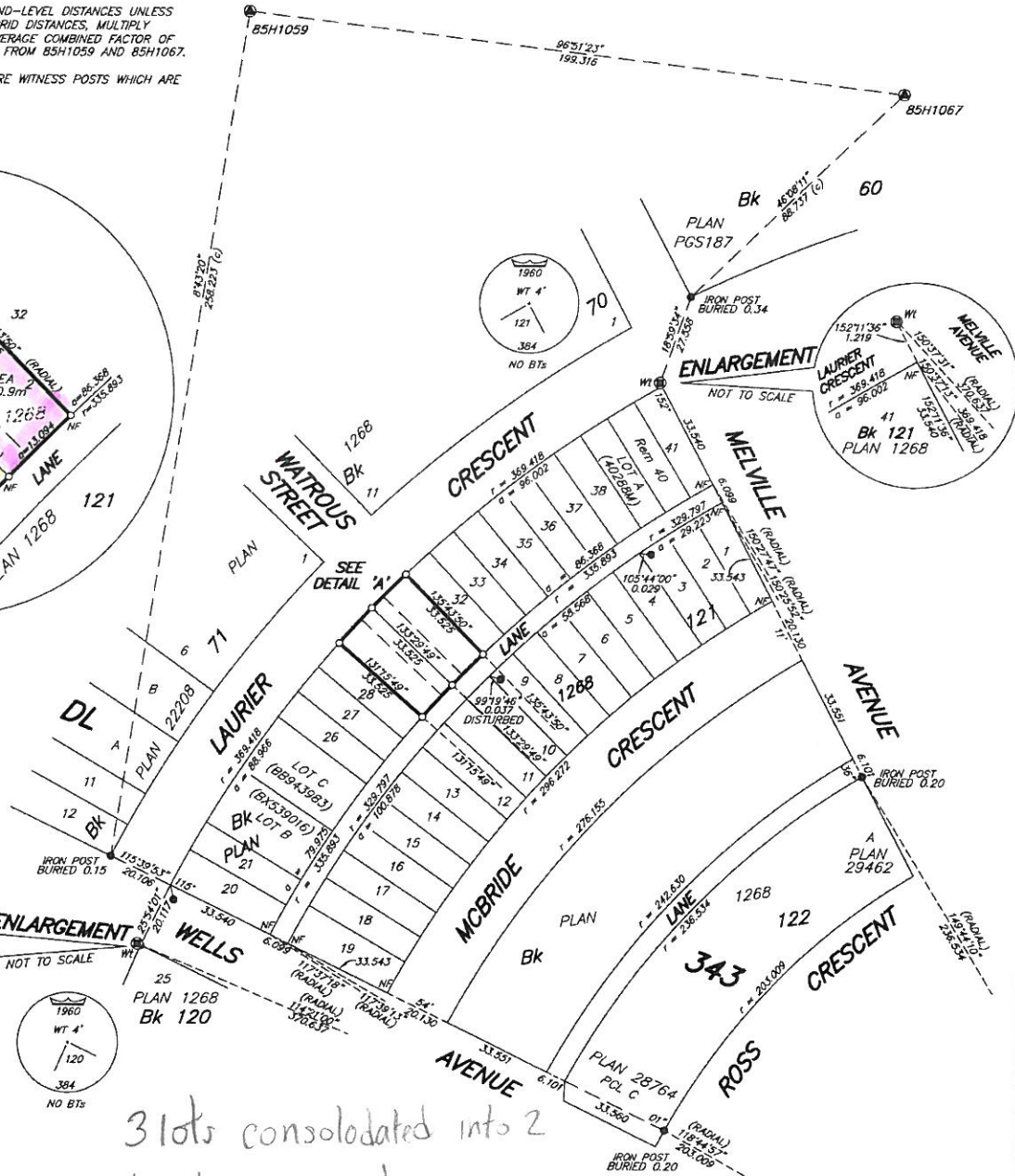
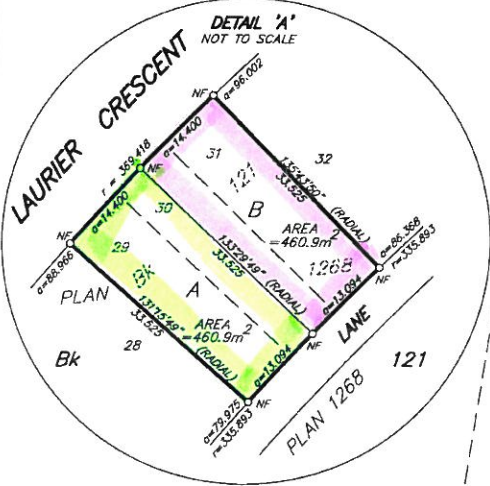
THIS PLAN SHOWS HORIZONTAL GROUND-LEVEL DISTANCES UNLESS  
OTHERWISE SPECIFIED. TO COMPUTE GRID DISTANCES, MULTIPLY  
GROUND-LEVEL DISTANCES BY THE AVERAGE COMBINED FACTOR OF  
0.9995131 WHICH HAS BEEN DERIVED FROM B5H1059 AND B5H1067.

NOTE: THIS PLAN SHOWS ONE OR MORE WITNESS POSTS WHICH ARE  
NOT SET ON THE TRUE CORNER(S).

2157 Laurier Cres. - old

New PIDs  
Lot A 028-849-671 - 2163 Laurier Cres.  
Lot B 028-849-680 - 2155 Laurier Cres.

Flid 00-01433-000



3 lots consolidated into 2  
due to zoning change.  
old PIDs:

013.075.411  
013.075.535  
013.075.543

THIS PLAN LIES WITHIN THE JURISDICTION OF THE  
APPROVING OFFICER FOR THE CITY OF PRINCE GEORGE.  
CPG FILE NO. : SD100360

THE FIELD SURVEY REPRESENTED BY THIS PLAN  
WAS COMPLETED ON THE 3rd DAY OF MAY, 2012.  
DARREN KENT, BCLS

THIS PLAN LIES WITHIN THE REGIONAL DISTRICT  
OF FRASER - FORT GEORGE.

**McElhanney**  
McElhanney Associates  
Land Surveying Ltd.  
Prince George, B.C.  
E-mail: pgmols@mcnelhanney.com  
Ph: (250) 561-2229 Fax: (250) 563-1941

DL-343	File No. - 5984-S
CPG FILE NO. : SD100360	