

SUBDIVISION PLAN OF THE SOUTH 1/2 OF DISTRICT LOT 7862, CARIBOO DISTRICT.

PLAN EPP20100

BCGS 93G.096

THE INTENDED PLOT SIZE OF THIS PLAN IS 864mm IN WIDTH BY 560mm IN HEIGHT (D SIZE) WHEN PLOTTED AT A SCALE OF 1:5000

ALL DISTANCES ARE SHOWN IN METRES AND DECIMALS THEREOF, UNLESS OTHERWISE INDICATED.

LEGEND

- ⊙ DENOTES STANDARD CAPPED POST FOUND
- ⊙ DENOTES STANDARD CAPPED POST PLACED
- DENOTES STANDARD IRON POST FOUND
- DENOTES STANDARD IRON POST PLACED
- △ DENOTES TRAVERSE HUB PLACED

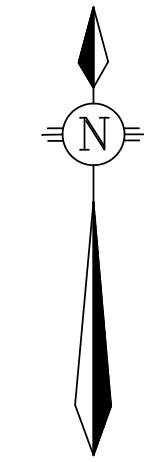
THIS PLAN SHOWS HORIZONTAL GROUND-LEVEL DISTANCES UNLESS OTHERWISE SPECIFIED. TO COMPUTE GRID DISTANCES, MULTIPLY GROUND-LEVEL DISTANCES BY THE AVERAGE COMBINED FACTOR OF 0.9994787. THE AVERAGE COMBINED FACTOR HAS BEEN DETERMINED BASED ON AN ELLIPSOIDAL ELEVATION OF 795.8 METRES.

GRID BEARINGS ARE DERIVED FROM DIFFERENTIAL CARRIER PHASE GPS OBSERVATIONS AND ARE REFERRED TO THE CENTRAL MERIDIAN OF UTM ZONE 10. TO OBTAIN LOCAL ASTRONOMIC BEARINGS REFERRED TO THE MERIDIAN THROUGH TRAVERSE HUB #5452, SUBTRACT 0°06'50".

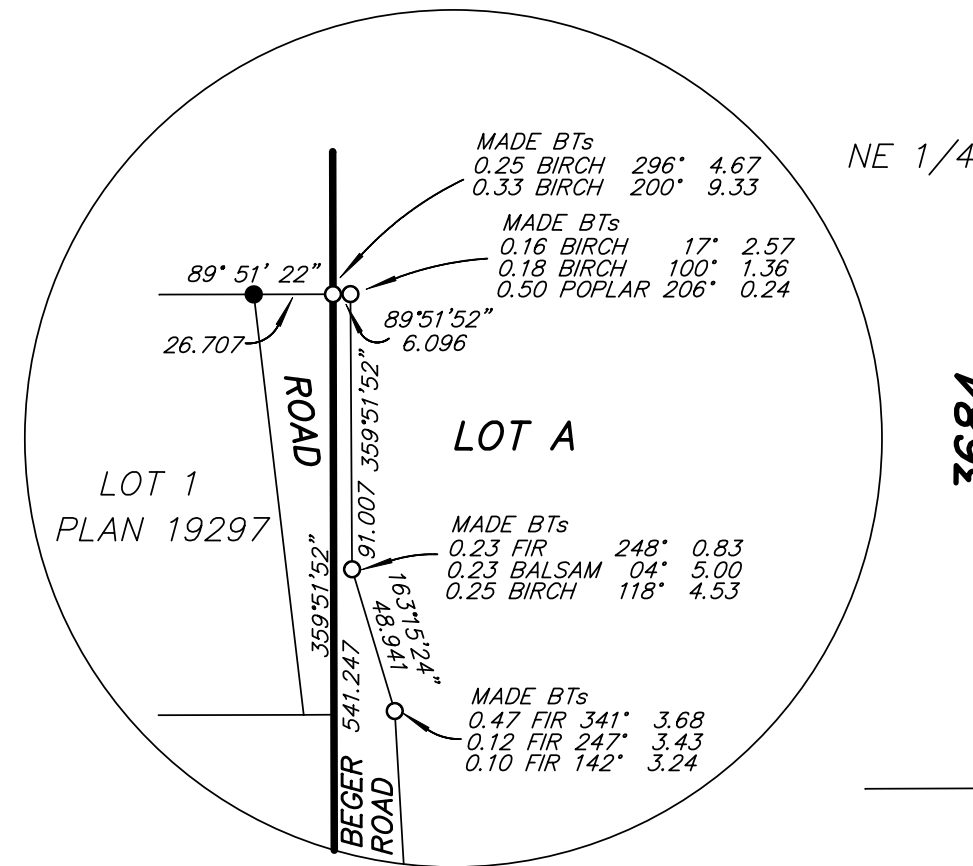
THE UTM COORDINATES AND ESTIMATED HORIZONTAL POSITIONAL ACCURACY ACHIEVED ARE DERIVED FROM DUAL FREQUENCY OBSERVATIONS PROCESSED USING NATURAL RESOURCES CANADA'S PRECISE POINT POSITIONING SERVICE.

BEARINGS TO BEARING TREES ARE MAGNETIC.

NOTE: THIS PLAN SHOWS ONE OR MORE WITNESS POSTS WHICH ARE NOT SET ON THE TRUE CORNER(S).



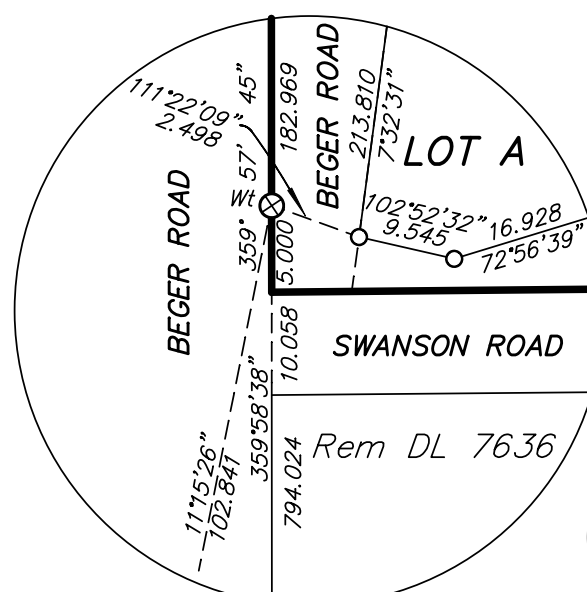
DETAIL 'E'
NOT TO SCALE



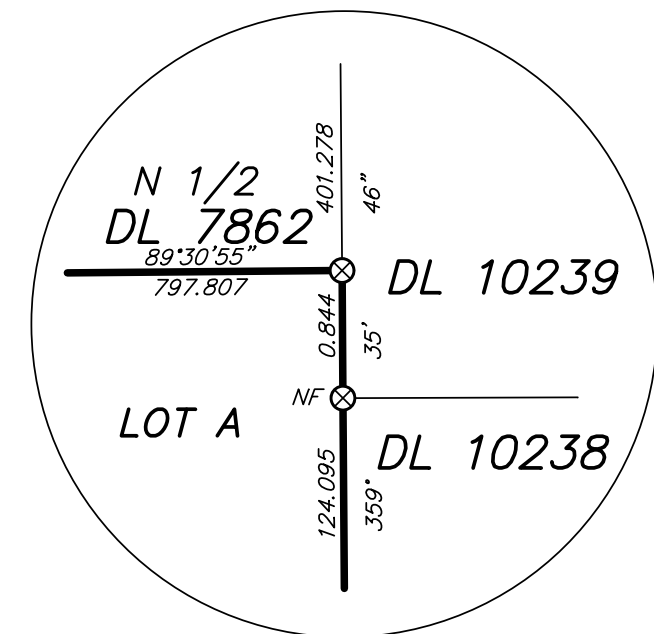
DETAIL 'D'
NOT TO SCALE



DETAIL 'C'
NOT TO SCALE



DETAIL 'A'
NOT TO SCALE



THIS SUBDIVISION LIES WITHIN THE AGRICULTURAL LAND RESERVE.

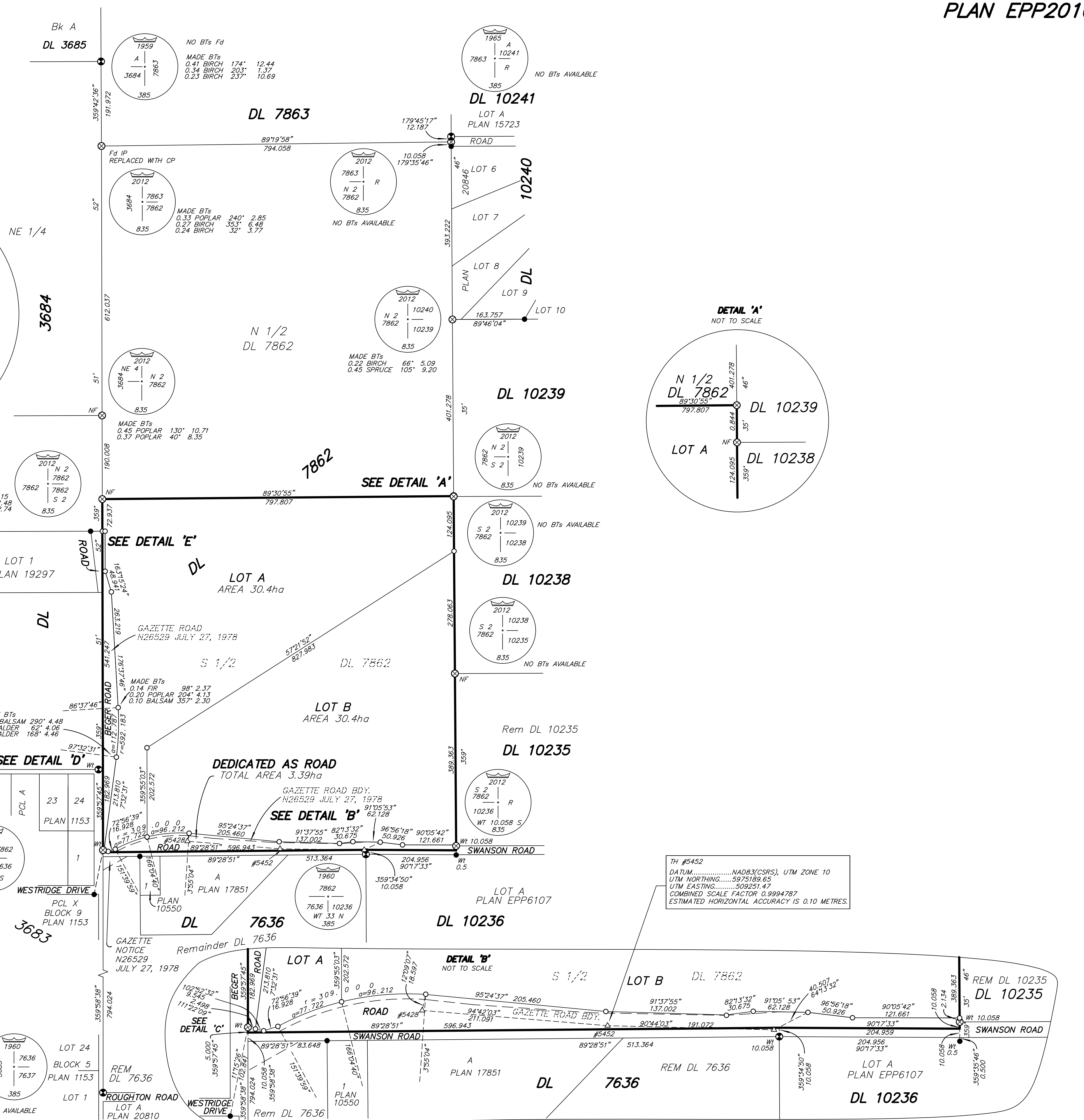
THIS PLAN LIES WITHIN THE JURISDICTION OF THE APPROVING OFFICER FOR THE CITY OF PRINCE GEORGE.
CPG File: SD100353

THE FIELD SURVEY REPRESENTED BY THIS PLAN WAS COMPLETED ON THE 26th DAY OF APRIL, 2012
DAVID E. STORBACK, BCLS, CLS

McElhanney
McElhanney Associates
Land Surveying Ltd.
Prince George, B.C.
E-mail: pgmals@mcclhanney.com
Ph: (250) 561-2229 Fax: (250) 563-1941

DL-7862 File No. - 5986-S
CPG File: SD100353

THIS PLAN LIES WITHIN THE REGIONAL DISTRICT OF FRASER - FORT GEORGE.



TH #5452
DATUM.....NAD83(CSRS), UTM ZONE 10
UTM NORTHING.....5975189.65
UTM EASTING.....509251.47
COMBINED SCALE FACTOR 0.9994787
ESTIMATED HORIZONTAL ACCURACY IS 0.10 METRES.